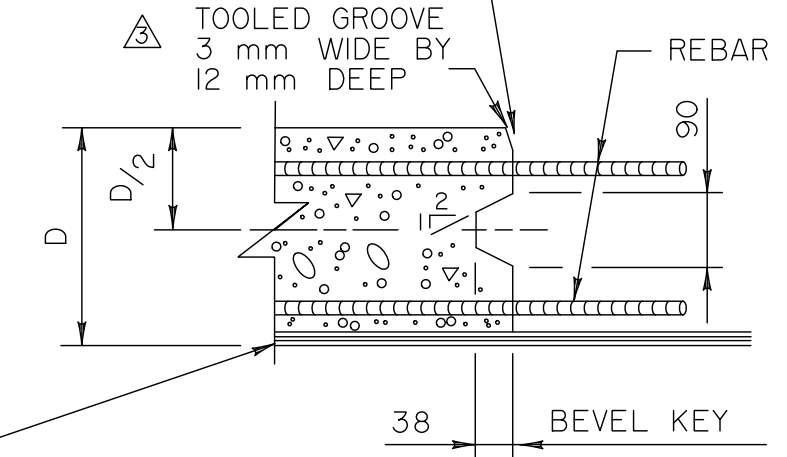


WALL OR PIER
SHAFT DETAIL

③ APPLY AN APPROVED GRAVITY FLOW EPOXY
CRACK SEALER IN ACCORDANCE WITH THE
MANUFACTURER'S RECOMENDATIONS
AND SECTION 20.5.3.



SLAB DETAIL

GENERAL NOTES

- DIMENSIONS ARE GIVEN IN mm. DETAILS ARE NOT TO SCALE.
- SURFACES OF HORIZONTAL JOINTS SHALL BE THOROUGHLY CONSOLIDATED AND INTENTIONALLY LEFT IN A ROUGHENED CONDITION.
- JOINTS SHALL BE CLEANED OF SURFACE LAITANCE AND OTHER FOREIGN MATERIALS PRIOR TO PLACING NEW CONCRETE.
- ③ • REFER TO ALBERTA TRANSPORTATION'S PRODUCT LIST UNDER "CRACK TREATMENT/CONCRETE CRACK FILLER" FOR APPROVED GRAVITY FLOW EPOXY PRODUCTS.

④	2012-01-12	POUR STRIP SIZE AND LOCATION REVISED	CM _{CM}
③	2010-01-21	SLAB DETAIL & GENERAL NOTES REVISED	DB
②	01-06-06	SLAB DETAIL JOINT REVISED	RY
①	99-04-12	REDRAWN FROM S-1412-98 REV ①	RY
NO	DATE	REVISIONS	BY

Alberta TRANSPORTATION AND UTILITIES
TECHNICAL STANDARDS BRANCH

STANDARD
CONSTRUCTION JOINTS

DESIGNED RY	DRAWN WS	DATE 99-04-12	APPROVED EXECUTIVE DIRECTOR	SIGNATURE <i>mmBoyd</i>	DATE May 8/87	PAGE 4.35	DRAWING S-1412-99
----------------	-------------	------------------	--------------------------------	----------------------------	------------------	--------------	----------------------