

GENERAL NOTES

• ALL DIMENSIONS ARE IN MILLIMETRES EXCEPT AS OTHERWISE NOTED.

DESIGN

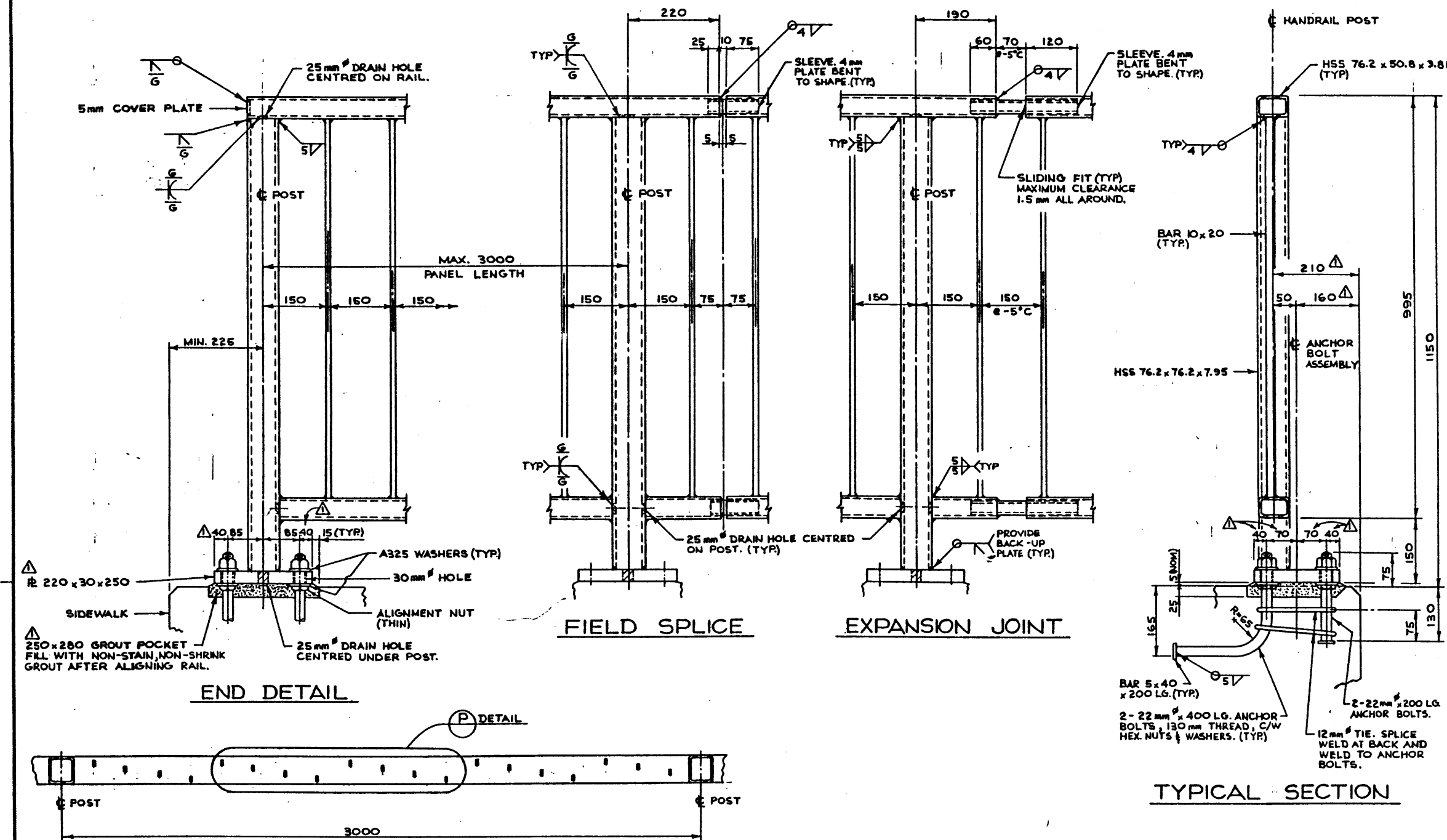
- C.S.A. CAN3-S6-M78 SPECIFICATIONS EXCEPT LOADING.
- LOADING IS IN ACCORDANCE WITH THE NATIONAL BUILDING CODE OF CANADA 1980, SECTION 4.1.10-1.
- TOP RAIL LOADS
 - HORIZONTAL LOAD - 2.2 kN/m
 - VERTICAL LOAD - 1.5 kN/m
- VERTICAL AND HORIZONTAL LOADS ARE APPLIED SEPARATELY.
- VERTICAL BAR LOADS
 - HORIZONTAL LOAD - 0.45 kN AT MIDHEIGHT

FABRICATION

- ALL REQUIREMENTS OF BRIDGE BRANCH SPECIFICATIONS FOR THE SUPPLY OF BRIDGERAIL (SPECIFICATION NO. B312M CURRENT AT TIME OF TENDERING) SHALL BE MET.
- ALL STEEL SHALL CONFORM TO THE CURRENT A.S.T.M. SPECIFICATION A36 OR C.S.A. SPECIFICATION 640-21M81 - 300M EXCEPT STRUCTURAL TUBING SHALL CONFORM TO C.S.A. 640-21M81-350M OR A.S.T.M. A500B AND ANCHOR BOLTS SHALL CONFORM TO A.S.T.M. A-307.
- ALL WELDING SHALL CONFORM TO CURRENT AWS SPECIFICATION D1.1.
- ALL MATERIALS SHALL BE HOT DIP GALVANIZED AFTER FABRICATION IN ACCORDANCE WITH THE FOLLOWING A.S.T.M. SPECIFICATIONS:
 - RAILING AND POSTS -----A123.
 - BOLTS AND ANCHOR BOLT ASSEMBLIES-----A153.
- ALL EXPOSED CUT TUBE ENDS SHALL BE GROUND SMOOTH. TOP RAIL SECTIONS SHALL BE FABRICATED IN LENGTHS NOT EXCEEDING 9 M BUT WHERE POSSIBLE CONTINUOUS OVER AT LEAST 3 POSTS.
- AT LEAST 2 POSTS REQUIRED IN RAIL SECTION EITHER SIDE OF AN EXPANSION JOINT, EG. AT ENDS OF BRIDGE.
- BRIDGE TO BE CONSIDERED LEVEL FOR HANDRAIL FABRICATION UNLESS THE ROADWAY GRADE EXCEEDS 1%.
- BARS & POSTS TO BE VERTICAL FOR ROADWAY GRADES OVER 1%.
- POST BASE PLATES TO BE PLACED ON BEVEL FOR ROADWAY GRADES OVER 2%.

ERECTION

- ALL DIMENSIONS ARE MEASURED PARALLEL TO TOP OF CURB AND ALONG CENTRELINE OF ANCHOR BOLT ASSEMBLIES.
- LINE AND ELEVATION OF RAIL TO BE SET BY INSTRUMENT.



APPROVED			
		1150mm STAGGERED VERTICAL BAR TYPE HANDRAIL	
NO.	DATE	DESCRIPTION	DATE
Δ	B2-11-24	BASE PLATE, GROUT PAD & ANCHOR BOLT DIM.	R.J.R.
REVISIONS			
DESIGNED	DRAWN BY	DATE	CHECKED BY
R.J.R.	W.S.	02-11-01	
DATE	SCALE	FILE NO.	SHEET
NOV. 3/02	1:5		S-1426