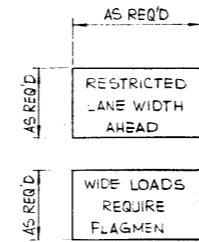


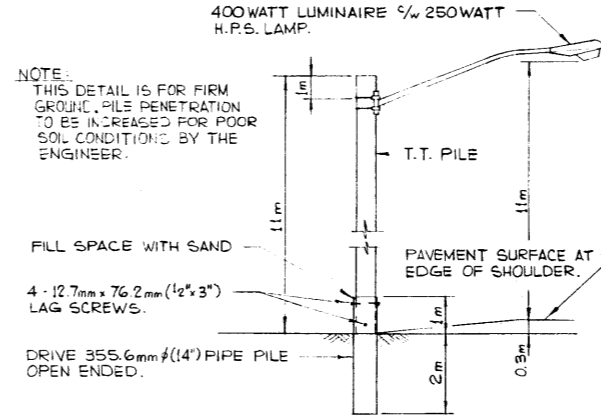
SIGNING MATERIAL LIST:

SIGN No.	MESSAGE OR DESCRIPTION	TOTAL No. REQ'D FROM DRAWING	NUMBER ON HAND	ADDITIONAL SIGNS REQUIRED
WD-24	NARROW BRIDGE			
WD-A-41	ROAD WORK			
WD-A-43L	ROAD DIVERSION LEFT			
WD-A-43R	ROAD DIVERSION RIGHT			
WD-A-45	FLAGMAN			
WD-101B	BRIDGE CONSTRUCTION AHEAD			
WD-154	END CONSTRUCTION			
RB-1	MAXIMUM 50			
RB-1	MAXIMUM 100			
RB-5	MAXIMUM SPEED AHEAD 50			
RB-31	DO NOT PASS			
RB-32	PASSING PERMITTED			
WD-T	DISTANCE 4 KM			
WD-116-1	BARRICADE 14R & 14L			
WD-116-5	ARROW STANDS ONLY			
WD-116	DELINEATORS			
N/A	FLOODLIGHTS (H.P.S.) w/ POLE (OPTIONAL)			
N/A	WIDE LOADS REQUIRE FLAGMEN (SEE DETAIL)			
N/A	RESTRICTED LANE WIDTH AHEAD (SEE DETAIL)			
WD-B-4T	RESTRICTED LANE WIDTH IN METRES			

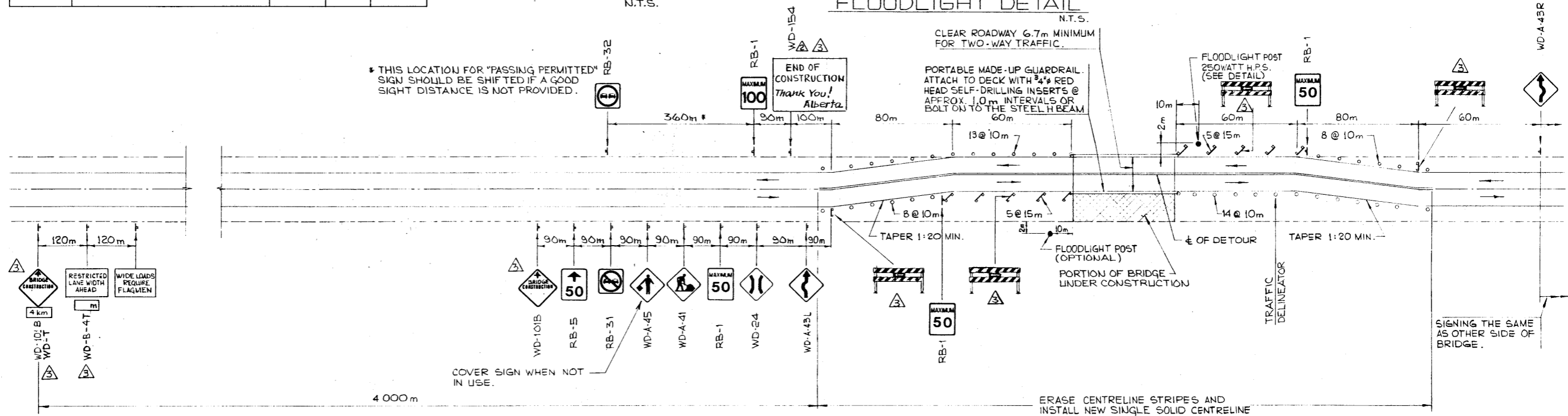
NOTE: LETTERING ON BOTH SIGNS TO BE 150mm HIGH.



SIGN DETAILS
N.T.S.



FLOODLIGHT DETAIL
N.T.S.



* THIS LOCATION FOR "PASSING PERMITTED" SIGN SHOULD BE SHIFTED IF A GOOD SIGHT DISTANCE IS NOT PROVIDED.

NOTE: REVERSE SIGNING FOR REPAIRS TO REMAINING PORTION OF BRIDGE DECK.

GENERAL NOTES:

- THIS DRAWING ILLUSTRATES TRAFFIC SIGNING AND DELINEATION REQUIREMENTS FOR THE TWO STAGES OF BRIDGE REPAIRS.
- GENERALLY, TWO-WAY TRAFFIC IS TO BE ACCOMMODATED DURING ALL STAGES OF CONSTRUCTION. DUE TO SPECIAL CIRCUMSTANCES AND IN THE EVENT THAT ONLY ONE LANE IS AVAILABLE FOR TRAFFIC ACCOMMODATION, ENSURE THAT THE APPROPRIATE SIGNING IS INSTALLED AS PER DWG. S-1429, WITH FLAGMEN IN OPERATION.
- WHEN SWITCHING FROM ONE STAGE OF CONSTRUCTION TO THE NEXT, EMPLOY FLAGMEN AND ENSURE APPROPRIATE SIGNING.
- RED FLAGS TO BE INSTALLED ON ALL SIGNS DURING DAYLIGHT HOURS.
- FLASHERS TO BE PLACED AT ALL SIGNS INCLUDING BARRICADES AT NIGHT.
- ALL SIGNS TO BE COVERED OR TAKEN DOWN.
- ALL SIGNS SHOWN ARE AT MINIMUM DISTANCES WHICH MAY BE INCREASED OR REGULATED DEPENDENT ON CONDITIONS.
- WHEN FLAGMEN ARE EMPLOYED, THEY MUST STAND WITHIN THE 50km/h ZONE AND ARE REQUIRED TO WEAR REFLECTORIZED JACKETS AND WHITE COVERALLS AT ALL TIMES. STOP AND GO PADDLES SHALL BE USED BOTH NIGHT AND DAY. SIGNAL WANDS ARE TO BE USED ON FLASHLIGHTS AT NIGHT.
- ALL SIGNS ARE TO BE KEPT CLEAN. DAMAGED OR WORN OUT SIGNS ARE TO BE REPLACED.
- FLOODLIGHTS ARE OPTIONAL. THEIR NEED SHALL BE AS DETERMINED BY THE ENGINEER, DEPENDENT ON SIGHT DISTANCES AND TRAFFIC DENSITIES.
- ONE WEEK PRIOR TO MOVING TO SITE, CONTACT THE OFFICE TO ARRANGE FOR REVISIONS TO PAVEMENT MARKINGS.
- BRIDGE ENGINEER OR PROJECT MANAGER MAY MAKE ADJUSTMENTS TO SIGNS AS REQUIRED TO SUIT LOCAL OR SITE CONDITIONS.

SUPERSEDED

SUPERSEDED
BY REVISION

③ ④

APPROVED				Alb ^{er} ta TRANSPORTATION BRIDGE BRANCH		METRIC					
90-10-25	CHANGES TO SIGNS AND MATERIAL LIST	W.S.V.	J.M.	SIGNING AND DELINEATION FOR TWO-LANE HWY, TWO-WAY TRAFFIC MAJOR BRIDGE REPAIRS							
87-05-06	CHANGED SIGN NO FROM WD-154 TO WD-154(B)	W.A.B.	J.M.								
87-02-05	REDRAWN FROM S-1428 REV. A	W.A.B.	J.M.								
NO.	DATE	DESCRIPTION	BY	CHK'D	DATE						
REVISIONS											
DESIGNED	DRAWN BY	DATE	CHECKED BY	DATE	STREAM	LOCATION	HWY NO	SCALE	FILE NO.	SHEET	DWG NO.
J. THOMPSON	A. PHILLIPS	78 03 23					1	N.T.S.		1 OF 1	S-1428-87

