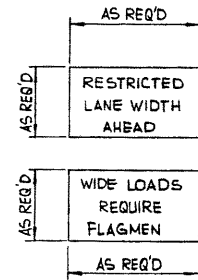


SIGNING MATERIAL LIST:

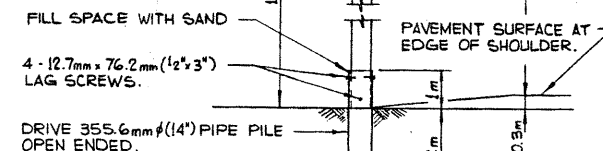
| SIGN No. | MESSAGE OR DESCRIPTION | TOTAL No. REQ'D FROM DRAWING | NUMBER ON HAND | ADDITIONAL SIGNS REQUIRED |
|-----------|--|------------------------------|----------------|---------------------------|
| WD-24 | NARROW BRIDGE | 2 | | |
| WD-A-41 | ROAD WORK | 2 | | |
| WD-A-43L | ROAD DIVERSION LEFT | 1 | | |
| WD-A-43R | ROAD DIVERSION RIGHT | 1 | | |
| WD-A-45 | FLAGMAN | 4 | | |
| WD-101B | BRIDGE CONSTRUCTION AHEAD | 4 | | |
| WD-154 | END CONSTRUCTION | 2 | | |
| RB-1 | MAXIMUM 40 | 2 | | |
| RB-3 | NIGHT SPEED 90 | 2 | | |
| RB-1 | MAXIMUM 80 | 4 | | |
| RB-1 | MAXIMUM 100 | 2 | | |
| RB-5 | MAXIMUM SPEED AHEAD 40 | 2 | | |
| RB-7 | km/h | 12 | | |
| RB-31 | DO NOT PASS | 4 | | |
| RB-31T | DO NOT PASS | 4 | | |
| RD-155 | REDUCE SPEED AHEAD | 2 | | |
| WD-116-1 | BARRICADE 14R x 12L | 26 | | |
| WD-116-4K | KEEP RIGHT | 2 | | |
| WD-116-5 | ARROW | 12 | | |
| WD-116 | STANDS ONLY | 26 | | |
| N/A | DELINEATORS TYPE A | 48 | | |
| N/A | FLOODLIGHTS (H.P.S.) w/ POLE | 2 | | |
| N/A | WIDE LOADS REQUIRE FLAGMEN (SEE DETAIL) | 4 | | |
| N/A | RESTRICTED LANE WIDTH AHEAD (SEE DETAIL) | 2 | | |

NOTE: LETTERING ON BOTH SIGNS TO BE 150mm HIGH.

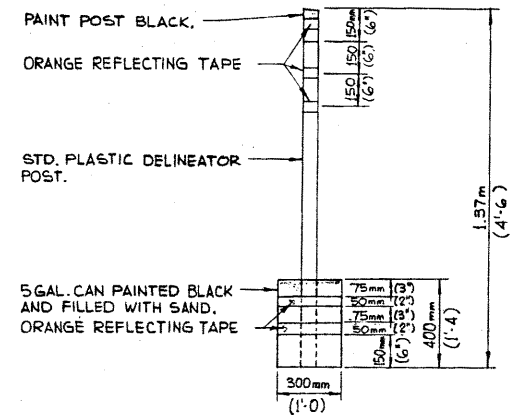


SIGN DETAILS
N.T.S.

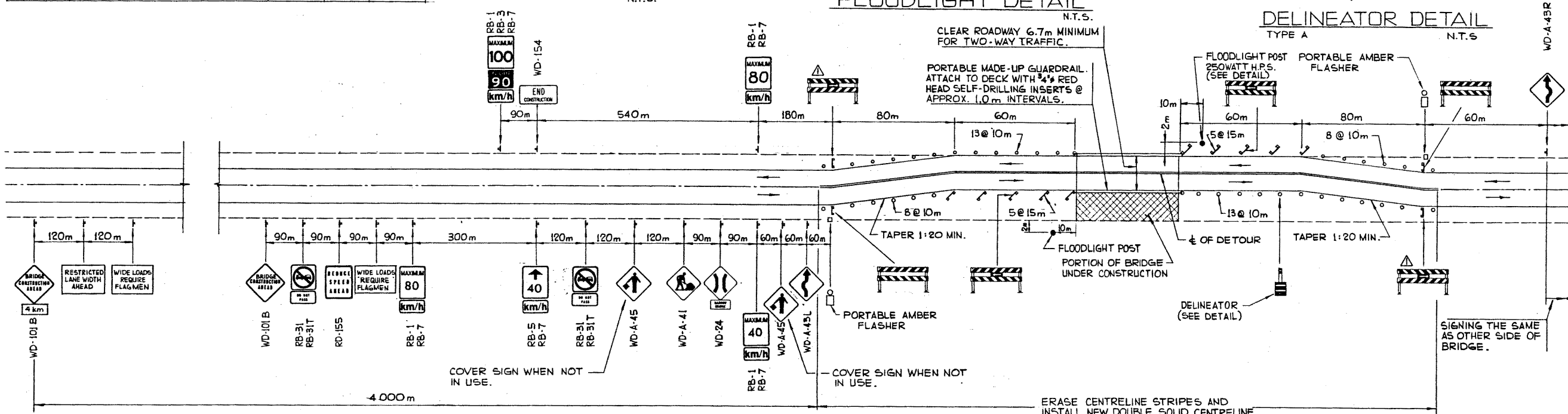
NOTE: THIS DETAIL IS FOR FIRM GROUND. PILE PENETRATION TO BE INCREASED FOR POOR SOIL CONDITIONS BY THE ENGINEER.



FLOODLIGHT DETAIL
N.T.S.



DELINEATOR DETAIL
TYPE A
N.T.S.



NOTE: REVERSE SIGNING FOR REPAIRS TO REMAINING PORTION OF BRIDGE DECK.

GENERAL NOTES:

- THIS DRAWING ILLUSTRATES TRAFFIC SIGNING AND DELINEATION REQUIREMENTS FOR THE TWO STAGES OF BRIDGE REPAIRS.
- SOME MINOR VARIATION OR MODIFICATIONS MAY BE REQUIRED TO THE SIGNING SHOWN ON THIS DRAWING TO SUIT SPECIAL NEEDS, AND SITE CONDITIONS.
- GENERALLY, TWO-WAY TRAFFIC IS TO BE ACCOMMODATED DURING ALL STAGES OF CONSTRUCTION. DUE TO SPECIAL CIRCUMSTANCES AND IN THE EVENT THAT ONLY ONE LANE IS AVAILABLE FOR TRAFFIC ACCOMMODATION, ENSURE THAT THE APPROPRIATE SIGNING IS INSTALLED AS PER DWG. S-1429, WITH FLAGMEN IN OPERATION.
- WHEN SWITCHING FROM ONE STAGE OF CONSTRUCTION TO THE NEXT, EMPLOY FLAGMEN AND ENSURE APPROPRIATE SIGNING.
- RED FLAGS TO BE INSTALLED ON ALL SIGNS DURING DAYLIGHT HOURS.
- FLARES TO BE PLACED AT ALL SIGNS AT NIGHT.
- ALL SIGNS NOT IN EFFECT TO BE COVERED OR TAKEN DOWN.
- ALL SIGNS SHOWN ARE AT MINIMUM DISTANCES WHICH MAY BE INCREASED OR REGULATED DEPENDANT ON CONDITIONS.
- WHEN FLAGMEN ARE EMPLOYED, THEY MUST STAND WITHIN THE 40 km/h ZONE AND ARE REQUIRED TO WEAR REFLECTORIZED JACKETS AND ARM BANDS AT ALL TIMES. STOP AND GO PADDLES SHALL BE USED BOTH NIGHT AND DAY. SIGNAL WANDS ARE TO BE USED ON FLASHLIGHTS AT NIGHT.
- ALL SIGNS ARE TO BE KEPT CLEAN. DAMAGED OR WORN OUT SIGNS ARE TO BE REPLACED.
- FLOODLIGHTS ARE OPTIONAL. THEIR NEED SHALL BE AS DETERMINED BY THE ENGINEER DEPENDANT ON SIGHT DISTANCES AND TRAFFIC DENSITIES.
- ONE WEEK PRIOR TO MOVING TO SITE, CONTACT THE OFFICE TO ARRANGE FOR REVISIONS TO PAVEMENT MARKINGS.
- BRIDGE ENGINEER OR PROJECT MANAGER MAY MAKE ADJUSTMENTS TO SIGNS AS REQUIRED TO SUIT LOCAL OR SITE CONDITIONS.

SUPERSEDED

BY S-1428-87
87-02-05



| | | | | | |
|----------------------------|-------------|--------------------------------------|------------|---|-----------|
| APPROVED | | Alberta TRANSPORTATION BRIDGE BRANCH | | METRIC | |
| 84-08-13 DIRECTIONAL ARROW | | W.A.B. J.G.R. | | SIGNING AND DELINEATION FOR TWO-LANE HWY., TWO-WAY TRAFFIC MAJOR BRIDGE REPAIRS | |
| NO. | DATE | DESCRIPTION | BY | CHKD. | DATE |
| | | | | | 02.30.178 |
| DESIGNED | DRAWN BY | DATE | CHECKED BY | DATE | STREAM |
| C. THOMPSON | A. PHILLIPS | 78 03 23 | | | LOCATION |
| SCALE | FILE NO. | SHEET | DWG. NO. | | |
| 1 N.T.S. | | 1 OF 1 | S-1428 | | |