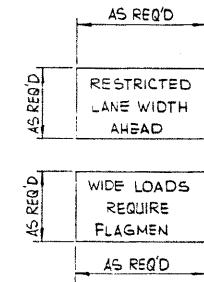


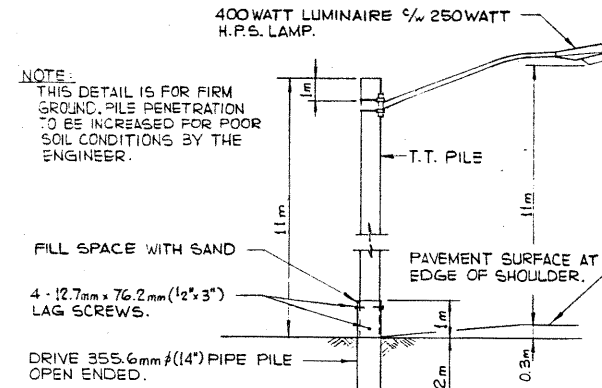
SIGNING MATERIAL LIST:

SIGN No.	MESSAGE OR DESCRIPTION	TOTAL No. REQ'D FROM DRAWING	NUMBER ON HAND	ADDITIONAL SIGNS REQUIRED
WD-24	NARROW BRIDGE	2		
WD-A-41	ROAD WORK	2		
WD-A-43L	ROAD DIVERSION LEFT	1		
WD-A-43R	ROAD DIVERSION RIGHT	1		
WD-A-45	FLAGMAN	4		
WD-101B	BRIDGE CONSTRUCTION AHEAD	4		
WD-154	END CONSTRUCTION	2		
RB-1	MAXIMUM 40	2		
RB-3	NIGHT SPEED 90	2		
RB-1	MAXIMUM 80	4		
RB-1	MAXIMUM 100	2		
RB-5	MAXIMUM SPEED AHEAD 40	2		
RB-7	km/h	12		
RB-31	DO NOT PASS	4		
RB-31T	DO NOT PASS	4		
RD-155	REDUCE SPEED AHEAD	2		
WD-116-1	BARRICADE 14R & 12L	26		
WD-116-4R	KEEP RIGHT	2		
WD-116-5	ARROW	12		
WD-116	STANDS ONLY	28		
N/A	DELINEATORS TYPE A	48		
N/A	FLOODLIGHTS (H.P.S.) %/w POLE	2		
N/A	WIDE LOADS REQUIRE FLAGMEN (SEE DETAIL)	4		
N/A	RESTRICTED LANE WIDTH AHEAD (SEE DETAIL)	2		

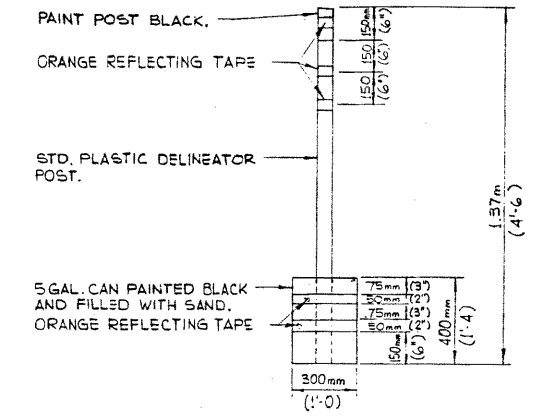
NOTE: LETTERING ON BOTH SIGNS TO BE 150mm HIGH.



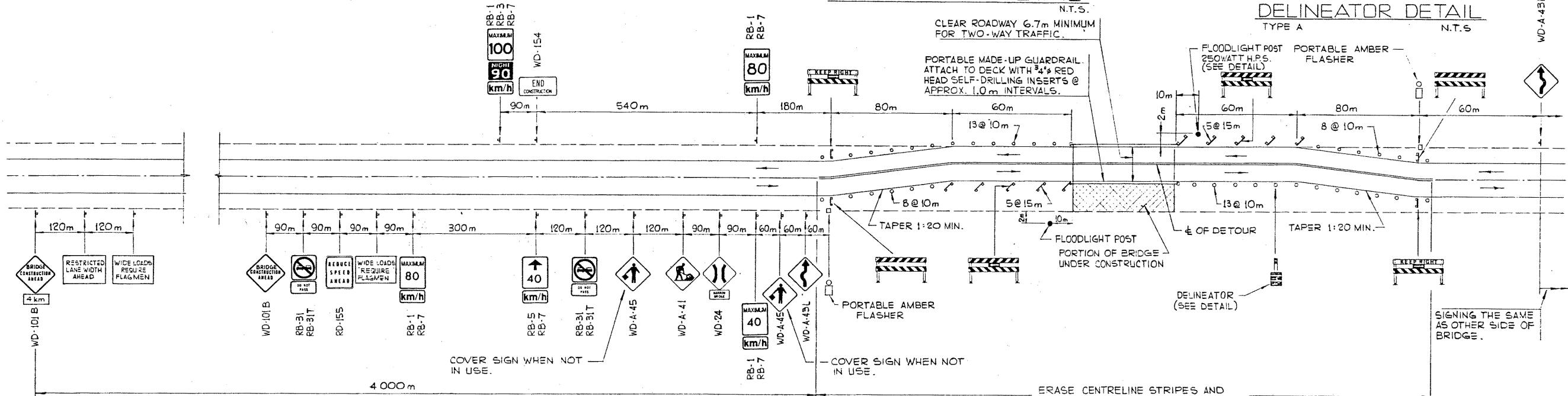
SIGN DETAILS
N.T.S.



FLOODLIGHT DETAIL
N.T.S.



DELINEATOR DETAIL
TYPE A
N.T.S.



NOTE: REVERSE SIGNING FOR REPAIRS TO REMAINING PORTION OF BRIDGE DECK.

GENERAL NOTES:

- THIS DRAWING ILLUSTRATES TRAFFIC SIGNING AND DELINEATION REQUIREMENTS FOR THE TWO STAGES OF BRIDGE REPAIRS.
- SOME MINOR VARIATION OR MODIFICATIONS MAY BE REQUIRED TO THE SIGNING SHOWN ON THIS DRAWING TO SUIT SPECIAL NEEDS AND SITE CONDITIONS.
- GENERALLY, TWO-WAY TRAFFIC IS TO BE ACCOMMODATED DURING ALL STAGES OF CONSTRUCTION. DUE TO SPECIAL CIRCUMSTANCES AND IN THE EVENT THAT ONLY ONE LANE IS AVAILABLE FOR TRAFFIC ACCOMMODATION, ENSURE THAT THE APPROPRIATE SIGNING IS INSTALLED AS PER DWG. S-1429, WITH FLAGMEN IN OPERATION.
- WHEN SWITCHING FROM ONE STAGE OF CONSTRUCTION TO THE NEXT, EMPLOY FLAGMEN AND ENSURE APPROPRIATE SIGNING.
- RED FLAGS TO BE INSTALLED ON ALL SIGNS DURING DAYLIGHT HOURS.
- FLARES TO BE PLACED AT ALL SIGNS AT NIGHT.
- ALL SIGNS NOT IN EFFECT TO BE COVERED OR TAKEN DOWN.
- ALL SIGNS SHOWN ARE AT MINIMUM DISTANCES WHICH MAY BE INCREASED OR REGULATED DEPENDANT ON CONDITIONS.
- WHEN FLAGMEN ARE EMPLOYED, THEY MUST STAND WITHIN THE 40 km/h ZONE AND ARE REQUIRED TO WEAR REFLECTORIZED JACKETS AND ARM BANDS AT ALL TIMES. STOP AND GO PADDLES SHALL BE USED BOTH NIGHT AND DAY. SIGNAL WANDS ARE TO BE USED ON FLASHLIGHTS AT NIGHT.
- ALL SIGNS ARE TO BE KEPT CLEAN. DAMAGED OR WORN OUT SIGNS ARE TO BE REPLACED.
- FLOODLIGHTS ARE OPTIONAL. THEIR NEED SHALL BE AS DETERMINED BY THE ENGINEER DEPENDANT ON SIGHT DISTANCES AND TRAFFIC DENSITIES.
- ONE WEEK PRIOR TO MOVING TO SITE, CONTACT THE OFFICE TO ARRANGE FOR REVISIONS TO PAVEMENT MARKINGS.
- BRIDGE ENGINEER OR PROJECT MANAGER MAY MAKE ADJUSTMENTS TO SIGNS AS REQUIRED TO SUIT LOCAL OR SITE CONDITIONS.

SUPERSEDED

APPROVED		Alberta TRANSPORTATION BRIDGE BRANCH		METRIC	
[Signature]		SIGNED AND DELINEATION FOR TWO-LANE HWY., TWO-WAY TRAFFIC MAJOR BRIDGE REPAIRS		DATE: OCT. 30 / 78	
NO.	DATE	DESCRIPTION			
REVISIONS					
DESIGNED	DRAWN BY	DATE	CHECKED BY	DATE	STREAM
C. THOMPSON	A. PHILLIPS	78 03 23			LOCATION
					HWY. NO.
					SCALE
					FILE NO.
					SHEET
					DWG. NO.
					1 OF 1
					S-1428

