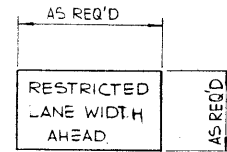


# SIGNING MATERIAL LIST:

SIGN No.	MESSAGE OR DESCRIPTION	TOTAL No. REQ'D FROM DRAWING	NUMBER ON HAND	ADDITIONAL SIGNS REQUIRED
WD-106	ONE LANE TRAFFIC	2		
WD-A-41	ROAD WORK	2		
WD-A-43L	ROAD DIVERSION LEFT	1		
WD-A-45	FLAGMAN	2		
WD-101B	BRIDGE CONSTRUCTION AHEAD	4		
WD-154	END CONSTRUCTION	2		
RB-1	MAXIMUM 50	2		
RB-1	MAXIMUM 100	2		
RB-5	MAXIMUM SPEED AHEAD 50	2		
RB-24	TWO WAY TRAFFIC AHEAD	2		
RB-31	DO NOT PASS	2		
RB-32	PASSING PERMITTED	2		
WD-T	DISTANCE 4 KM	2		
WB-2T	RESTRICTED LANE WIDTH IN METRE	2		
WD-116-1	BARRICADE 5R & 5L	12		
WD-116-5	ARROW	16		
WD-116	STANDS ONLY	2		
WD-B-4T	RESTRICTED LANE WIDTH IN METRES	2		
WD-111	BE PREPARED TO STOP	2		
N/A	TRAFFIC LIGHTS	2		
N/A	DELINEATORS	16		
N/A	FLOODLIGHTS (H.P.S.) 1/4 POLE (OPTIONAL)	2		
N/A	RESTRICTED LANE WIDTH AHEAD (SEE DETAIL)	2		
WB-3	TWO WAY TRAFFIC AHEAD (SYMBOL)	2		
WB-3T	TWO WAY TRAFFIC AHEAD (TAB)	2		

NOTE:  
LETTERING ON BOTH SIGNS  
TO BE 150 mm HIGH.



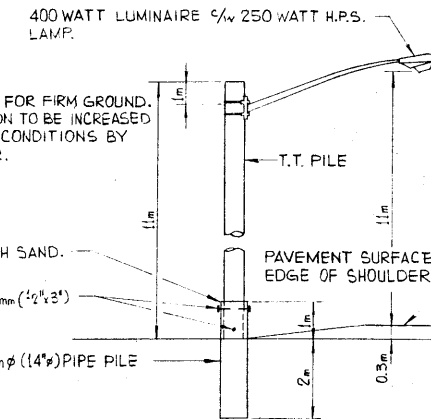
SIGN DETAILS  
N.T.S.

NOTE:  
THIS DETAIL IS FOR FIRM GROUND.  
PILE PENETRATION TO BE INCREASED  
FOR POOR SOIL CONDITIONS BY  
THE ENGINEER.

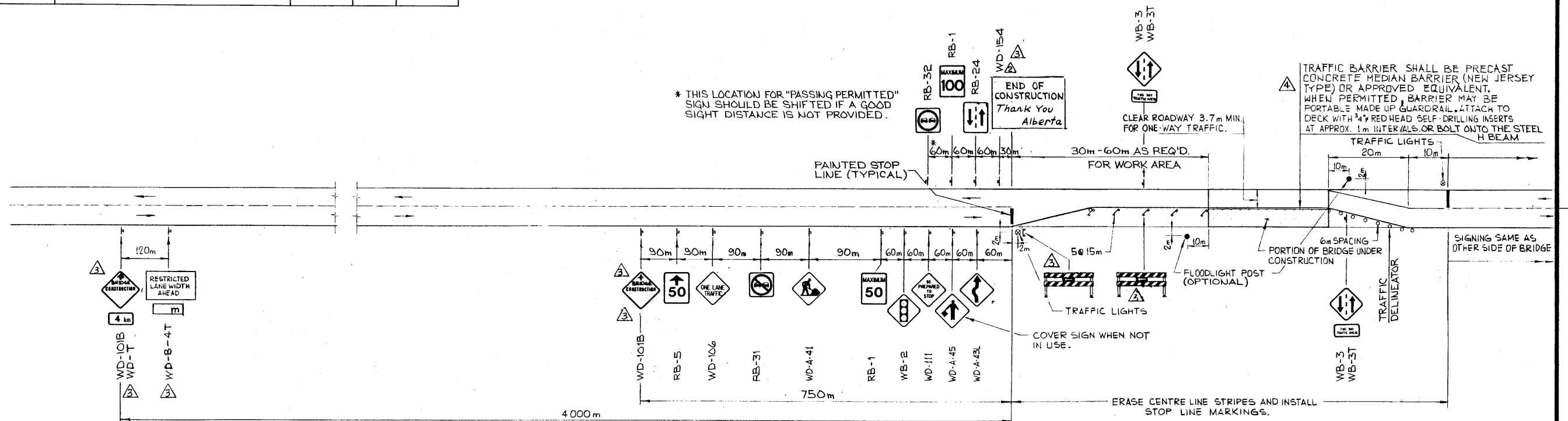
FILL SPACE WITH SAND.

4 - 12.7mm x 76.2mm (1/2" x 3")  
LAG SCREWS.

DRIVE 355.6mm (14") PIPE PILE  
OPEN ENDED.



FLOODLIGHT DETAIL  
N.T.S.



NOTE:  
REVERSE SIGNING FOR REPAIRS TO REMAINING  
PORTION OF BRIDGE.

## GENERAL NOTES:

- THIS DRAWING ILLUSTRATES TRAFFIC SIGNING AND DELINEATION REQUIREMENTS FOR THE TWO STAGES OF BRIDGE REPAIRS.
- GENERALLY, ONE-WAY TRAFFIC IS TO BE ACCOMMODATED DURING ALL STAGES OF CONSTRUCTION. DUE TO SPECIAL CIRCUMSTANCES, FLAGGING MAY BE REQUIRED IN LIEU OF TRAFFIC LIGHTS.
- WHEN SWITCHING FROM ONE STAGE OF CONSTRUCTION TO THE NEXT, EMPLOY FLAGMEN AND ENSURE APPROPRIATE SIGNING.
- RED FLAGS TO BE INSTALLED ON ALL SIGNS DURING DAYLIGHT HOURS.
- FLASHERS TO BE PLACED AT ALL SIGNS INCLUDING BARRICADES AT NIGHT.
- ALL SIGNS NOT IN EFFECT TO BE COVERED OR TAKEN DOWN.
- ALL SIGNS ARE AT MINIMUM DISTANCES WHICH MAY BE INCREASED OR REGULATED DEPENDENT ON CONDITIONS.
- WHEN FLAGMEN ARE EMPLOYED, THEY MUST STAND WITHIN THE 50km/h ZONE AND ARE REQUIRED TO WEAR REFLECTORIZED JACKETS AND WHITE COVERALLS AT ALL TIMES. STOP AND GO PADDLES SHALL BE USED BOTH DAY AND NIGHT. WANDS ARE TO BE USED ON FLASHLIGHTS AT NIGHT.
- ALL SIGNS ARE TO BE KEPT CLEAN. DAMAGED OR WORN OUT SIGNS ARE TO BE REPLACED.
- FLOODLIGHTS ARE OPTIONAL. THEIR NEED SHALL BE DETERMINED BY THE ENGINEER, DEPENDENT ON SIGHT DISTANCES AND TRAFFIC DENSITIES.
- ONE WEEK PRIOR TO MOVING TO SITE, CONTACT THE OFFICE TO ARRANGE FOR REVISIONS TO PAVEMENT MARKINGS.
- PERIOD FOR TRAFFIC LIGHTS WILL BE DEPENDANT ON CONDITIONS AT EACH SITE AND SHOULD BE DETERMINED BY THE ENGINEER.
- BRIDGE ENGINEER OR PROJECT MANAGER MAY MAKE ADJUSTMENTS TO SIGNS AND SIGN DISTANCES AS REQUIRED TO SUIT LOCAL OR SITE CONDITIONS.

**SUPERSEDED**  
**SUPERSEDED**

BY REVISION 95-03-07

③ ④ ⑤

⑤ ③ ④

93-11-12 TRAFFIC BARRIER NOTE LEA 10 90-10-25 CHANGES TO SIGNS & MATERIAL LIST WSW J.M. 87-05-06 CHANGED SIGN NO. FROM WD-154 TO WD-154 (B) W.A.B. J.M. 87-02-05 REDRAWN FROM S-1429 REV. A W.A.B. J.M.		APPROVED  CHIEF BRIDGE ENGINEER DATE: April 23, 1987		Alberta TRANSPORTATION BRIDGE BRANCH <b>METRIC</b> SIGNING AND DELINEATION FOR TWO LANE HIGHWAY ONE-WAY TRAFFIC MAJOR BRIDGE REPAIRS	
DESIGNED: R. SHALAGAN DRAWN BY: A. PHILLIPS DATE: 78 04 28		CHECKED BY: [blank] DATE: [blank]		STREAM: [blank] LOCATION: [blank] HWY NO: [blank] SCALE: [blank] FILE NO: [blank] SHEET: 10F1 DWG. NO: S-1429-87	