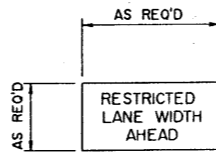
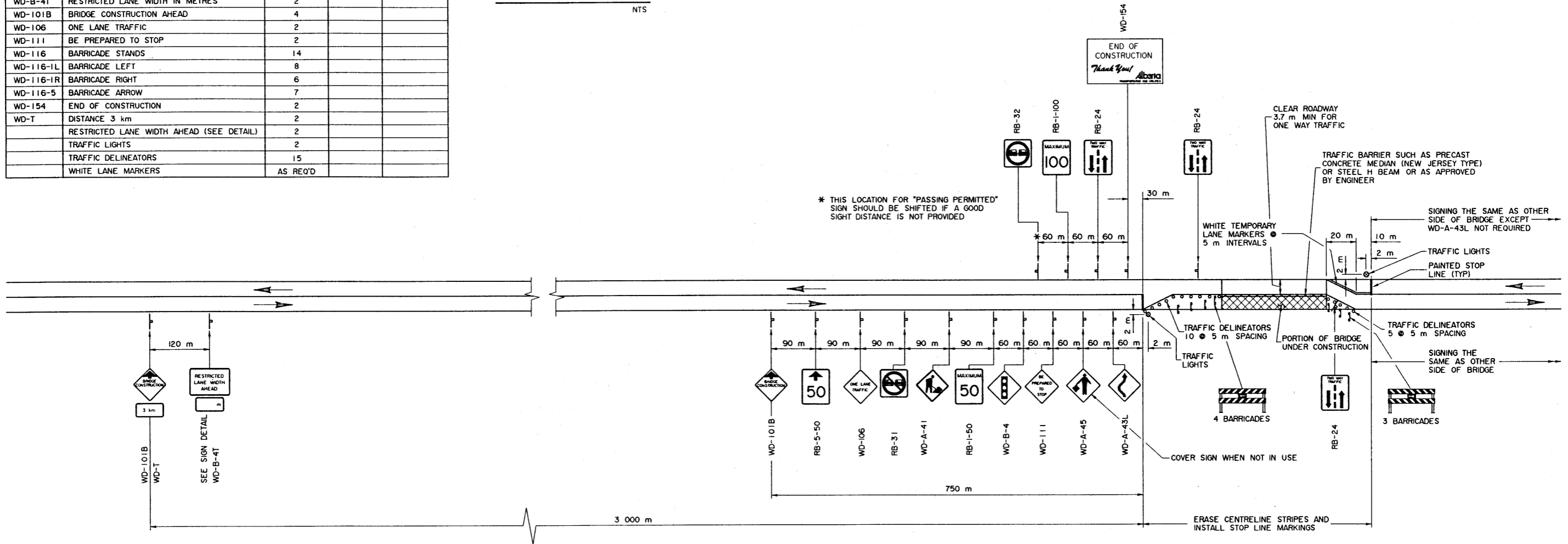


SIGNING MATERIALS LIST				
SIGN NO.	MESSAGE OR DESCRIPTION	TOTAL NO. REQ'D FROM DRAWING	NUMBER ON HAND	ADDITIONAL SIGNS REQUIRED
RB-1-50	MAXIMUM SPEED 50	2		
RB-1-100	MAXIMUM SPEED 100	2		
RB-5-50	MAXIMUM SPEED AHEAD 50	2		
RB-24	TWO WAY TRAFFIC	4		
RB-31	DO NOT PASS	2		
RB-32	PASSING PERMITTED	2		
WD-A-41	ROAD WORK	2		
WD-A-43L	ROADSIDE DIVERSION LEFT	1		
WD-A-45	FLAGPERSON	2		
WD-B-4	SIGNAL AHEAD	2		
WD-B-4T	RESTRICTED LANE WIDTH IN METRES	2		
WD-101B	BRIDGE CONSTRUCTION AHEAD	4		
WD-106	ONE LANE TRAFFIC	2		
WD-111	BE PREPARED TO STOP	2		
WD-116	BARRICADE STANDS	14		
WD-116-1L	BARRICADE LEFT	8		
WD-116-1R	BARRICADE RIGHT	6		
WD-116-5	BARRICADE ARROW	7		
WD-154	END OF CONSTRUCTION	2		
WD-T	DISTANCE 3 km	2		
	RESTRICTED LANE WIDTH AHEAD (SEE DETAIL)	2		
	TRAFFIC LIGHTS	2		
	TRAFFIC DELINEATORS	15		
	WHITE LANE MARKERS	AS REQ'D		

NOTE :
LETTERING ON SIGN
TO BE 150 mm HIGH



SIGN DETAIL
NTS



PLAN
NTS

SUPERSEDED
5-11-95 BY REVISION 15-11-95

GENERAL NOTES

- THIS DRAWING ILLUSTRATES TRAFFIC SIGNING AND DELINEATION REQUIREMENTS FOR THE TWO STAGES OF BRIDGE REPAIRS
- GENERALLY, ONE WAY TRAFFIC IS TO BE ACCOMMODATED DURING ALL STAGES OF CONSTRUCTION. DUE TO SPECIAL CIRCUMSTANCES, FLAGGING MAY BE REQUIRED IN LIEU OF TRAFFIC LIGHTS
- WHEN SWITCHING FROM ONE STAGE OF CONSTRUCTION TO THE NEXT, EMPLOY FLAGPERSONS AND ENSURE APPROPRIATE SIGNING
- ORANGE FLAGS TO BE INSTALLED ON ALL SIGNS DURING DAYLIGHT HOURS
- FLASHERS TO BE INSTALLED AT ALL BRIDGE CONSTRUCTION AHEAD SIGNS AND A FEW ON BARRICADES AT NIGHT AS DETERMINED BY ENGINEER
- ALL SIGNS NOT IN EFFECT TO BE COVERED OR TAKEN DOWN
- ALL SIGNS SHOWN ARE AT MINIMUM DISTANCES WHICH MAY BE INCREASED OR REGULATED DEPENDENT ON CONDITIONS
- WHEN FLAGPERSONS ARE EMPLOYED (THEY MUST BE CERTIFIED), THEY MUST STAND WITHIN THE 50 km/h ZONE AND ARE REQUIRED TO WEAR REFLECTORIZED VESTS AND WHITE COVERALLS AT ALL TIMES. STOP AND GO PADDLES SHALL BE USED BOTH NIGHT AND DAY. SIGNAL WANDS ARE TO BE USED ON FLASHLIGHTS AT NIGHT
- ALL SIGNS ARE TO BE KEPT CLEAN. DAMAGED OR WORN OUT SIGNS ARE TO BE REPLACED
- FLOODLIGHTS ARE OPTIONAL. THEIR NEED SHALL BE AS DETERMINED BY THE ENGINEER, DEPENDENT ON SIGHT DISTANCES AND TRAFFIC DENSITIES
- ONE WEEK PRIOR TO MOVING TO SITE, CONTACT THE OFFICE TO ARRANGE FOR REVISIONS TO PAVEMENT MARKINGS
- PERIOD FOR TRAFFIC LIGHTS WILL BE DEPENDENT ON CONDITIONS AT EACH SITE AND SHOULD BE DETERMINED BY THE ENGINEER
- BRIDGE ENGINEER OR PROJECT MANAGER MAY MAKE ADJUSTMENTS TO SIGNS AS REQUIRED TO SUIT LOCAL OR SITE CONDITIONS

DESIGNED CMT		DRAWN HWM		DATE 95-03-01		CHECKED [Signature]		DATE March 1995		APPROVED [Signature] EXECUTIVE DIRECTOR BRIDGE ENGINEERING		Albera TRANSPORTATION AND UTILITIES BRIDGE ENGINEERING BRANCH SIGNING AND DELINEATION FOR TWO LANE HWY, ONE WAY TRAFFIC MAJOR BRIDGE REPAIRS	
REV	DATE	REVISIONS				BY	DATE	STREAM	LOCATION	HIGHWAY	FILE	SHEET 1 of 1	DRAWING S-1429-95