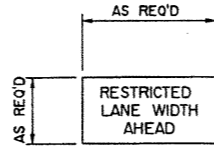


**SIGNING MATERIALS LIST**

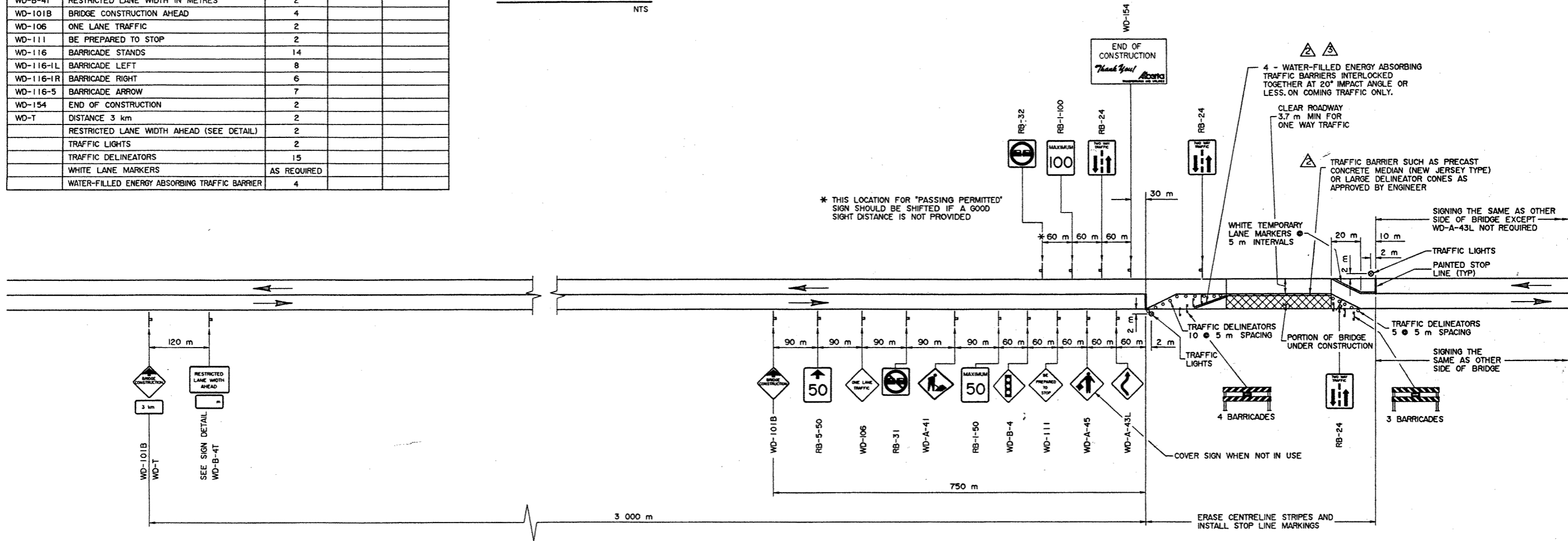
| SIGN NO.  | MESSAGE OR DESCRIPTION                        | TOTAL NO. REQ'D FROM DRAWING | NUMBER ON HAND | ADDITIONAL SIGNS REQUIRED |
|-----------|---|------------------------------|----------------|---------------------------|
| RB-1-50   | MAXIMUM SPEED 50                              | 2                            |                |                           |
| RB-1-100  | MAXIMUM SPEED 100                             | 2                            |                |                           |
| RB-5-50   | MAXIMUM SPEED AHEAD 50                        | 2                            |                |                           |
| RB-24     | TWO WAY TRAFFIC                               | 4                            |                |                           |
| RB-31     | DO NOT PASS                                   | 2                            |                |                           |
| RB-32     | PASSING PERMITTED                             | 2                            |                |                           |
| WD-A-41   | ROAD WORK                                     | 2                            |                |                           |
| WD-A-43L  | ROADSIDE DIVERSION LEFT                       | 1                            |                |                           |
| WD-A-45   | FLAGPERSON                                    | 2                            |                |                           |
| WD-B-4    | SIGNAL AHEAD                                  | 2                            |                |                           |
| WD-B-4T   | RESTRICTED LANE WIDTH IN METRES               | 2                            |                |                           |
| WD-101B   | BRIDGE CONSTRUCTION AHEAD                     | 4                            |                |                           |
| WD-106    | ONE LANE TRAFFIC                              | 2                            |                |                           |
| WD-111    | BE PREPARED TO STOP                           | 2                            |                |                           |
| WD-116    | BARRICADE STANDS                              | 14                           |                |                           |
| WD-116-1L | BARRICADE LEFT                                | 8                            |                |                           |
| WD-116-1R | BARRICADE RIGHT                               | 6                            |                |                           |
| WD-116-5  | BARRICADE ARROW                               | 7                            |                |                           |
| WD-154    | END OF CONSTRUCTION                           | 2                            |                |                           |
| WD-T      | DISTANCE 3 km                                 | 2                            |                |                           |
|           | RESTRICTED LANE WIDTH AHEAD (SEE DETAIL)      | 2                            |                |                           |
|           | TRAFFIC LIGHTS                                | 2                            |                |                           |
|           | TRAFFIC DELINEATORS                           | 15                           |                |                           |
|           | WHITE LANE MARKERS                            | AS REQUIRED                  |                |                           |
|           | WATER-FILLED ENERGY ABSORBING TRAFFIC BARRIER | 4                            |                |                           |

NOTE :  
LETTERING ON SIGN  
TO BE 150 mm HIGH



**SIGN DETAIL**

NTS



**PLAN**

NTS

**GENERAL NOTES**

- THIS DRAWING ILLUSTRATES TRAFFIC SIGNING AND DELINEATION REQUIREMENTS FOR THE TWO STAGES OF BRIDGE REPAIRS
- GENERALLY, ONE WAY TRAFFIC IS TO BE ACCOMMODATED DURING ALL STAGES OF CONSTRUCTION. DUE TO SPECIAL CIRCUMSTANCES, FLAGGING MAY BE REQUIRED IN LIEU OF TRAFFIC LIGHTS
- WHEN SWITCHING FROM ONE STAGE OF CONSTRUCTION TO THE NEXT, EMPLOY FLAGPERSONS AND ENSURE APPROPRIATE SIGNING
- ORANGE FLAGS TO BE INSTALLED ON ALL SIGNS DURING DAYLIGHT HOURS
- FLASHERS TO BE INSTALLED AT ALL BRIDGE CONSTRUCTION AHEAD SIGNS AND A FEW ON BARRICADES AT NIGHT AS DETERMINED BY ENGINEER
- ALL SIGNS NOT IN EFFECT TO BE COVERED OR TAKEN DOWN
- ALL SIGNS SHOWN ARE AT MINIMUM DISTANCES WHICH MAY BE INCREASED OR REGULATED DEPENDENT ON CONDITIONS
- WHEN FLAGPERSONS ARE EMPLOYED (THEY MUST BE CERTIFIED), THEY MUST STAND WITHIN THE 50 km/h ZONE AND ARE REQUIRED TO WEAR REFLECTORIZED VESTS AND WHITE COVERALLS AT ALL TIMES. STOP AND GO PADDLES SHALL BE USED BOTH NIGHT AND DAY. SIGNAL WANDS ARE TO BE USED ON FLASHLIGHTS AT NIGHT
- ALL SIGNS ARE TO BE KEPT CLEAN, DAMAGED OR WORN OUT SIGNS ARE TO BE REPLACED
- FLOODLIGHTS ARE OPTIONAL. THEIR NEED SHALL BE AS DETERMINED BY THE ENGINEER, DEPENDENT ON SIGHT DISTANCES AND TRAFFIC DENSITIES
- ONE WEEK PRIOR TO MOVING TO SITE, CONTACT THE OFFICE TO ARRANGE FOR REVISIONS TO PAVEMENT MARKINGS
- PERIOD FOR TRAFFIC LIGHTS WILL BE DEPENDENT ON CONDITIONS AT EACH SITE AND SHOULD BE DETERMINED BY THE ENGINEER
- BRIDGE ENGINEER OR PROJECT MANAGER MAY MAKE ADJUSTMENTS TO SIGNS AS REQUIRED TO SUIT LOCAL OR SITE CONDITIONS

**SUPERSEDED**  
BY TEB 1.115 BY REVISION A (96-11-28)  
SHEET 01

|  |  |  |  |
|--|--|--|--|
| ORIGINAL DRAWING APPROVED BY<br><b>J. RAMOTAR</b><br>EXECUTIVE DIRECTOR<br>BRIDGE ENGINEERING<br>MAR 6, 1995                       |  | <b>Alberta</b> TRANSPORTATION AND UTILITIES<br>BRIDGE ENGINEERING BRANCH             |  |
| DESIGNED: CMT<br>DRAWN: HWM<br>DATE: 95-03-01<br>CHECKED: JM<br>DATE: 95-03-03   |  | SIGNING AND DELINEATION FOR<br>TWO LANE HWY, ONE WAY TRAFFIC<br>MAJOR BRIDGE REPAIRS |  |
| REV 96-05-17 WATER BARRIER NOTE JM<br>95-11-24 WATER BARRIER ADDED AND BARRIER NOTE JM<br>95-03-02 REDRAWN FROM S-1429-87 REV 4 JM |  | SHEET 1 OF 1<br>DRAWING S-1429-95  |  |

NOTE: THIS DRAWING HAS BEEN REDUCED TO 22"x34" DO NOT SCALE