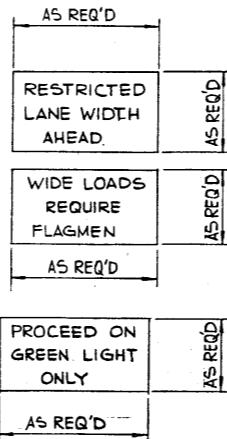


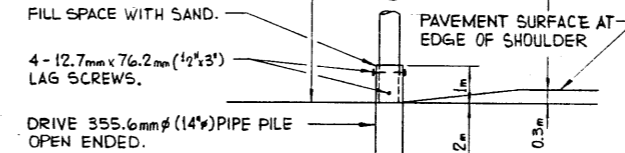
SIGNING MATERIAL LIST:

SIGN No.	MESSAGE OR DESCRIPTION	TOTAL No. REQ'D FROM DRAWING	NUMBER ON HAND	ADDITIONAL SIGNS REQUIRED
WD-24	NARROW BRIDGE	2		
WD-A-41	ROAD WORK	2		
WD-A-43L	ROAD DIVERSION LEFT	1		
WD-A-45	FLAGMAN	4		
WD-101B	BRIDGE CONSTRUCTION AHEAD	4		
WD-154	END CONSTRUCTION	2		
RB-1	MAXIMUM 40	2		
RB-1	MAXIMUM 50	2		
RB-1	MAXIMUM 80	2		
RB-1	MAXIMUM 100	4		
RB-5	MAXIMUM SPEED AHEAD 40	2		
RB-7	km/h	2		
RB-31	DO NOT PASS	12		
RB-31T	DO NOT PASS	6		
RD-155	REDUCE SPEED AHEAD	6		
WD-116-1L	BARRICADE	2		
WD-116-4R	KEEP RIGHT	2		
WD-116-5	ARROW	2		
WD-116	STANDS ONLY	5		
WB-2	TRAFFIC LIGHT AHEAD	5		
WB-2T	TRAFFIC LIGHT AHEAD	2		
WD-111	BE PREPARED TO STOP	2		
N/A	TRAFFIC LIGHTS	6		
N/A	DELINEATORS TYPE A + 10%	2		
N/A	FLOODLIGHTS (H.P.S.) 1/4 POLE	16		
N/A	WIDE LOADS REQUIRE FLAGMEN (SEE DETAIL)	2		
N/A	RESTRICTED LANE WIDTH AHEAD (SEE DETAIL)	2		
RA-1	STOP	2		
RB-3	NIGHT SPEED 90	2		
N/A	PROCEED ON GREEN LIGHT ONLY	2		
RB-24	TWO WAY TRAFFIC AHEAD	2		

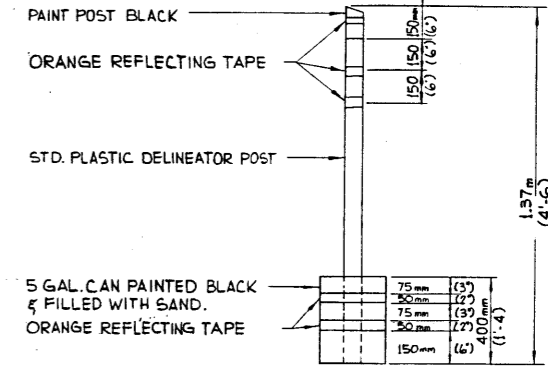
NOTE:
LETTERING ON BOTH SIGNS TO BE 150 mm HIGH.



NOTE:
THIS DETAIL IS FOR FIRM GROUND. PILE PENETRATION TO BE INCREASED FOR POOR SOIL CONDITIONS BY THE ENGINEER.

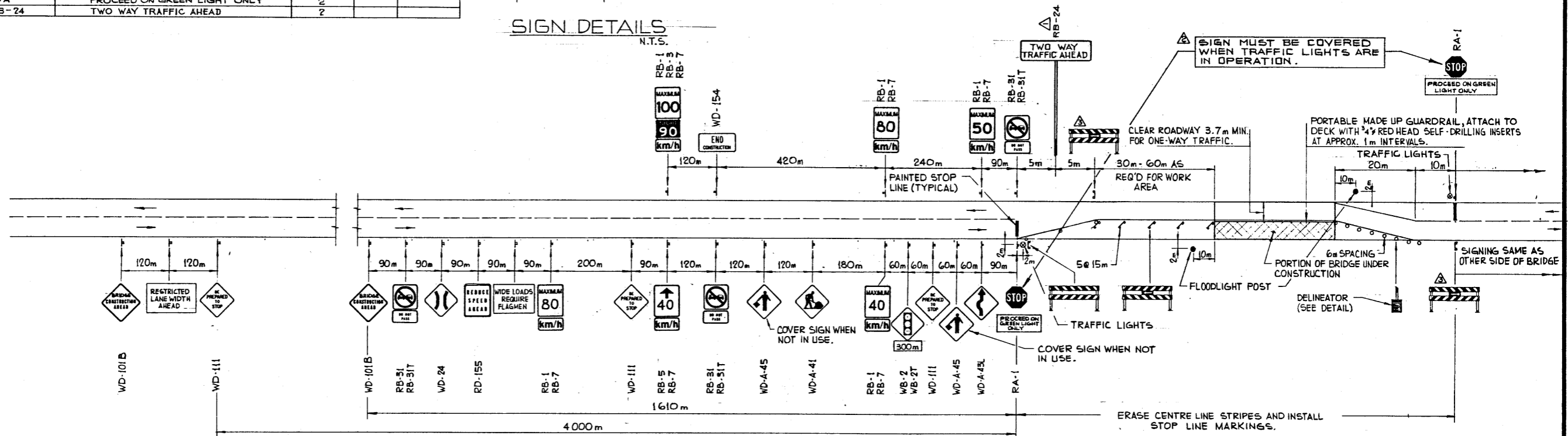


FLOODLIGHT DETAIL
N.T.S.



DELINEATOR DETAIL
N.T.S.

SIGN DETAILS
N.T.S.



NOTE:
REVERSE SIGNING FOR REPAIRS TO REMAINING PORTION OF BRIDGE.

GENERAL NOTES:

- THIS DRAWING ILLUSTRATES TRAFFIC SIGNING AND DELINEATION REQUIREMENTS FOR THE TWO STAGES OF BRIDGE REPAIRS.
- SOME MINOR VARIATION OR MODIFICATIONS MAY BE REQUIRED TO THE SIGNING SHOWN ON THIS DRAWING TO SUIT SPECIAL NEEDS AND SITE CONDITIONS.
- GENERALLY, ONE-WAY TRAFFIC IS TO BE ACCOMMODATED DURING ALL STAGES OF CONSTRUCTION. DUE TO SPECIAL CIRCUMSTANCES, FLAGGING MAY BE REQUIRED IN LIEU OF TRAFFIC LIGHTS.
- WHEN SWITCHING FROM ONE STAGE OF CONSTRUCTION TO THE NEXT, EMPLOY FLAGMEN AND ENSURE APPROPRIATE SIGNING.
- RED FLAGS TO BE INSTALLED ON ALL SIGNS DURING DAYLIGHT HOURS.
- FLARES TO BE PLACED AT ALL SIGNS AT NIGHT.
- ALL SIGNS NOT IN EFFECT TO BE COVERED OR TAKEN DOWN.
- ALL SIGNS ARE AT MINIMUM DISTANCES WHICH MAY BE INCREASED OR REGULATED DEPENDANT ON CONDITIONS.
- WHEN FLAGMEN ARE EMPLOYED, THEY MUST STAND WITHIN THE 40km/h ZONE AND ARE REQUIRED TO WEAR REFLECTORIZED JACKETS AND ARM BANDS AT ALL TIMES. STOP AND GO PADDLES SHALL BE USED BOTH DAY AND NIGHT. WANDS ARE TO BE USED ON FLASHLIGHTS AT NIGHT.
- ALL SIGNS ARE TO BE KEPT CLEAN. DAMAGED OR WORN OUT SIGNS ARE TO BE REPLACED.
- FLOODLIGHTS ARE OPTIONAL. THEIR NEED SHALL BE DETERMINED BY THE ENGINEER. DEPENDANT ON SIGHT DISTANCES AND TRAFFIC DENSITIES.
- ONE WEEK PRIOR TO MOVING TO SITE, CONTACT THE OFFICE TO ARRANGE FOR REVISIONS TO PAVEMENT MARKINGS.
- PERIOD FOR TRAFFIC LIGHTS WILL BE DEPENDANT ON CONDITIONS AT EACH SITE AND SHOULD BE DETERMINED BY THE ENGINEER.
- BRIDGE ENGINEER OR PROJECT MANAGER MAY MAKE ADJUSTMENTS TO SIGNS AND SIGN DISTANCES AS REQUIRED TO SUIT LOCAL OR SITE CONDITIONS.

SUPERSEDED
BY 5-1429-87
87-02-05

APPROVED		Alberta TRANSPORTATION BRIDGE BRANCH		METRIC	
84 08 13 DIRECTIONAL ARROW		J.G.R.		SIGNING AND DELINEATION FOR TWO LANE HIGHWAY ONE-WAY TRAFFIC MAJOR BRIDGE REPAIRS	
81 06 24 NOTE ADDITION & REVISION		T.B.			
81 03 31 RB-24 ADDED		J.A.S.			
DESIGNED	DRAWN BY	DATE	CHECKED BY	DATE	STREAM
R.SHALAGAN	A.PHILLIPS	76 04 28			
DATE: OCT 30/78		SCALE	FILE NO.	SHEET	DWG. NO.
				10F1	S-1429