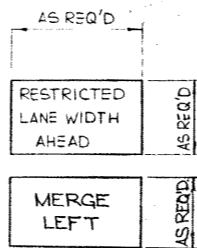


SIGNING MATERIAL LIST:

SIGN No.	MESSAGE OR DESCRIPTION	TOTAL No. REQD FROM DRAWING	NUMBER ON HAND	ADDITIONAL SIGNS REQUIRED
WD-A-41	ROAD WORK	2		
WD-A-43L	ROAD DIVERSION LEFT	1		
WD-A-43R	ROAD DIVERSION RIGHT	1		
WD-A-45	FLAGMAN	2		
WD-101B	BRIDGE CONSTRUCTION AHEAD	4		
WD-154	END CONSTRUCTION	2		
RB-1	MAXIMUM 50	4		
RB-1	MAXIMUM 100	1		
RB-5	MAXIMUM SPEED AHEAD 50	1		
RB-24	TWO WAY TRAFFIC	1		
WD-T	DISTANCE 3 km	1		
RB-25	KEEP RIGHT	1		
RB-31	DO NOT PASS	1		
WD-B-4T	RESTRICTED LANE WIDTH IN METRES	1		
WD-B-3	TWO WAY TRAFFIC	1		
WD-B-3T	TWO WAY TRAFFIC AHEAD	1		
WD-116-1	BARRICADE 20R & 20L	20		
WD-116-5	ARROW	20		
WD-116	STANDS ONLY	40		
WD-A-33R	ROAD NARROWS RIGHT (WITH LANE MARKINGS SHOWN)	4		
N/A	MERGE LEFT (SEE DETAIL)	2		
WD-T	DISTANCE 1 km	2		
N/A	DELINEATORS	200		
N/A	FLOODLIGHTS (H.P.S.) 9/16 POLE (OPTIONAL)	4		
N/A	RESTRICTED LANE WIDTH AHEAD (SEE DETAIL)	2		
N/A	LIGHTED ARROW PANEL	1		

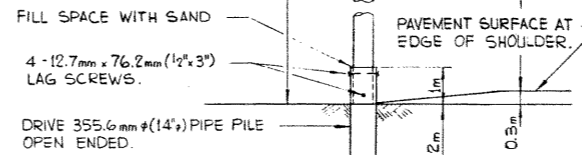
NOTE: LETTERING ON BOTH SIGNS TO BE 150mm HIGH.



SIGN DETAILS
N.T.S.

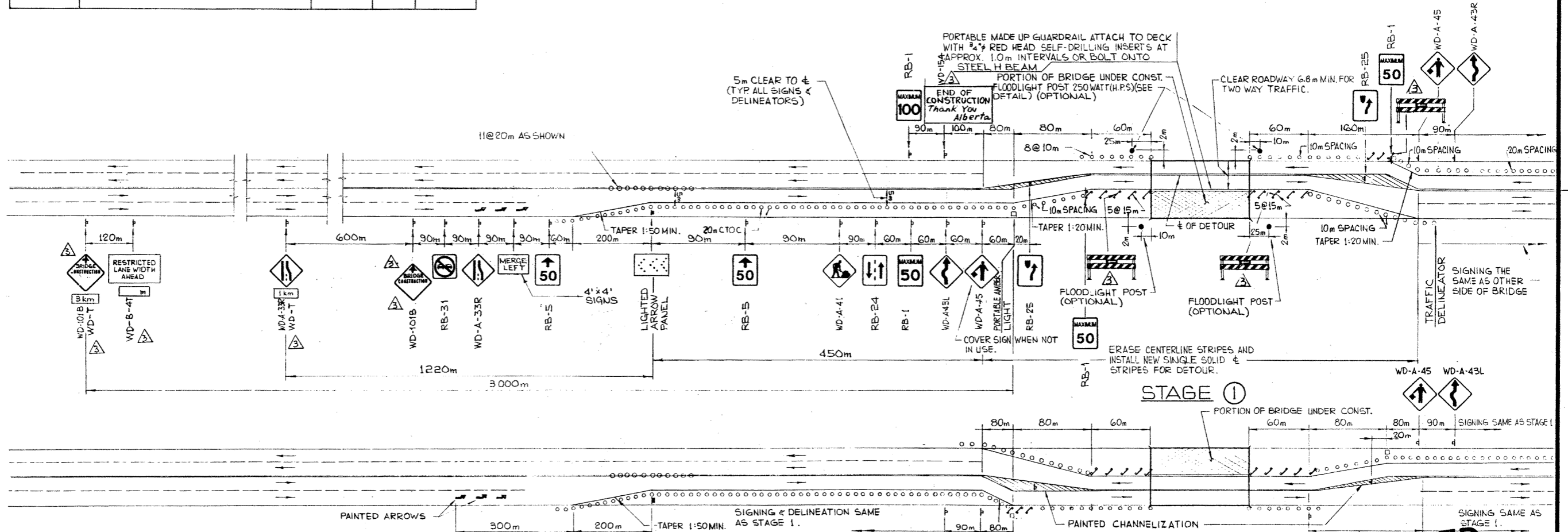
400WATT LUMINAIRE 9/16 250WATT H.P.S. LAMP.

NOTE: THIS DETAIL IS FOR FIRM GROUND. PILE PENETRATION TO BE INCREASED FOR POOR SOIL CONDITIONS BY THE ENGINEER.



FLOODLIGHT DETAIL
N.T.S.

SUPERSEDED
BY REVISION



GENERAL NOTES:

- THIS DRAWING ILLUSTRATES TRAFFIC SIGNING & DELINEATION REQUIREMENTS FOR THE TWO STAGES OF BRIDGE REPAIRS.
- GENERALLY, TWO-WAY TRAFFIC IS TO BE ACCOMMODATED DURING ALL STAGES OF CONSTRUCTION. DUE TO SPECIAL CIRCUMSTANCES AND IN THE EVENT THAT ONLY ONE LANE IS AVAILABLE FOR TRAFFIC ACCOMMODATION, ENSURE THAT THE APPROPRIATE SIGNING IS INSTALLED AS PER DWG. S-1429, WITH FLAGMEN IN OPERATION.
- WHEN SWITCHING FROM ONE STAGE OF CONST. TO THE NEXT, UTILIZE LIGHTED ARROW PANELS & EMPLOY FLAGMEN. ENSURE APPROP. SIGNING.
- RED FLAGS TO BE INSTALLED ON ALL SIGNS DURING DAYLIGHT HOURS.
- FLASHERS TO BE PLACED AT ALL SIGNS INCLUDING BARRICADES AT NIGHT.
- ALL SIGNS NOT IN EFFECT TO BE COVERED OR TAKEN DOWN.
- ALL SIGNS SHOWN ARE AT MINIMUM DISTANCES WHICH MAY BE INCREASED OR REGULATED DEPENDENT ON CONDITIONS.
- WHEN FLAGMEN ARE EMPLOYED, THEY MUST STAND WITHIN THE 50km/h ZONE AND ARE REQUIRED TO WEAR REFLECTORIZED JACKETS AND WHITE COVERALLS AT ALL TIMES. STOP AND GO PADDLES SHALL BE USED BOTH NIGHT AND DAY. SIGNAL WANDS ARE TO BE USED ON FLASHLIGHTS AT NIGHT.
- ALL SIGNS ARE TO BE KEPT CLEAN. DAMAGED OR WORN OUT SIGNS ARE TO BE REPLACED.
- FLOODLIGHTS ARE OPTIONAL. THEIR NEED SHALL BE DETERMINED BY THE ENGINEER, DEPENDENT ON SIGHT DISTANCES AND TRAFFIC DENSITIES.
- ONE WEEK PRIOR TO MOVING TO SITE, CONTACT THE OFFICE TO ARRANGE FOR REVISIONS TO PAVEMENT MARKINGS.
- BRIDGE ENGINEER OR PROJECT MANAGER MAY MAKE ADJUSTMENTS TO SIGNS AS REQUIRED TO SUIT SITE OR LOCAL CONDITIONS.

SUPERSEDED
② ③

DESIGNED		DRAWN BY		DATE		CHECKED BY		DATE		STREAM		LOCATION		HWY. NO.		SCALE		FILE NO.		SHEET		DWG. NO.	
C. THOMPSON		A. PHILLIPS		78 04 20												N.T.S.				1 OF 1		S-1430-87	

APPROVED	Alberta TRANSPORTATION BRIDGE BRANCH	METRIC
SIGNING AND DELINEATION FOR 4 LANE UNDIVIDED HWY. TWO-WAY TRAFFIC MAJOR BRIDGE REPAIRS		
CHANGES TO SIGNS & MATERIAL LIST W.S.V. J.M. CHANGED SIGN NO FROM WD-154 TO WD-154(B) W.A.B. J.M. REDRAWN FROM S-1430 W.A.B. J.M. DATE: <i>March 23, 1987</i>		