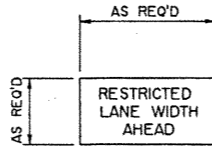
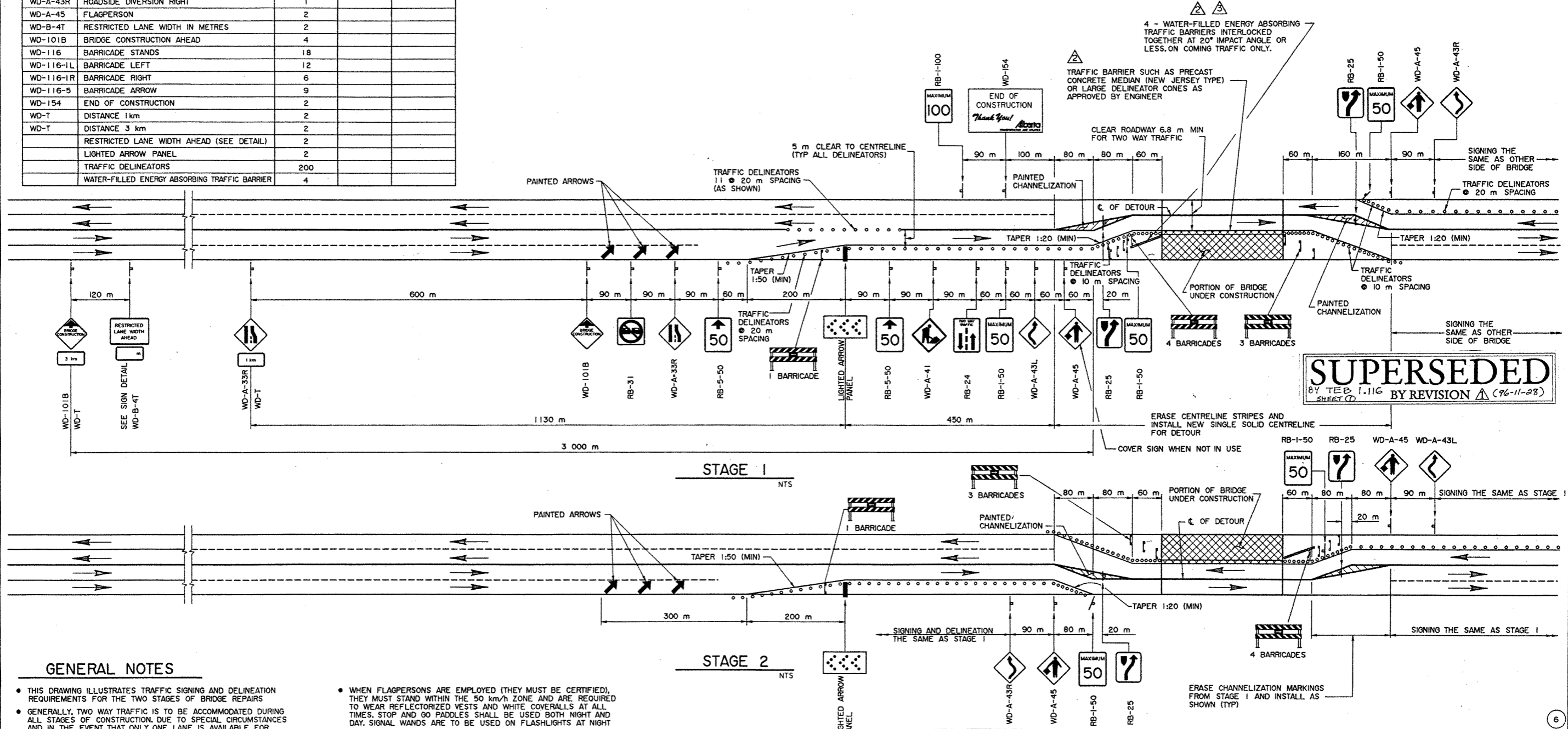


SIGNING MATERIALS LIST				
SIGN NO.	MESSAGE OR DESCRIPTION	TOTAL NO. REQ'D FROM DRAWING	NUMBER ON HAND	ADDITIONAL SIGNS REQUIRED
RB-1-50	MAXIMUM SPEED 50	4		
RB-1-100	MAXIMUM SPEED 100	2		
RB-5-50	MAXIMUM SPEED AHEAD 50	4		
RB-24	TWO WAY TRAFFIC	2		
RB-25	KEEP RIGHT	2		
RB-31	DO NOT PASS	2		
WD-A-33R	ROAD NARROWS-LOSS OF LANE RIGHT	4		
WD-A-41	ROAD WORK	2		
WD-A-43L	ROADSIDE DIVERSION LEFT	1		
WD-A-43R	ROADSIDE DIVERSION RIGHT	1		
WD-A-45	FLAGPERSON	2		
WD-B-4T	RESTRICTED LANE WIDTH IN METRES	2		
WD-101B	BRIDGE CONSTRUCTION AHEAD	4		
WD-116	BARRICADE STANDS	18		
WD-116-1L	BARRICADE LEFT	12		
WD-116-1R	BARRICADE RIGHT	6		
WD-116-5	BARRICADE ARROW	9		
WD-154	END OF CONSTRUCTION	2		
WD-T	DISTANCE 1 km	2		
WD-T	DISTANCE 3 km	2		
	RESTRICTED LANE WIDTH AHEAD (SEE DETAIL)	2		
	LIGHTED ARROW PANEL	2		
	TRAFFIC DELINEATORS	200		
	WATER-FILLED ENERGY ABSORBING TRAFFIC BARRIER	4		

NOTE :
LETTERING ON BOTH SIGNS TO BE 150 mm HIGH AS REQ'D



SIGN DETAILS NTS



GENERAL NOTES

- THIS DRAWING ILLUSTRATES TRAFFIC SIGNING AND DELINEATION REQUIREMENTS FOR THE TWO STAGES OF BRIDGE REPAIRS
- GENERALLY, TWO WAY TRAFFIC IS TO BE ACCOMMODATED DURING ALL STAGES OF CONSTRUCTION. DUE TO SPECIAL CIRCUMSTANCES AND IN THE EVENT THAT ONLY ONE LANE IS AVAILABLE FOR TRAFFIC ACCOMMODATION, ENSURE THAT THE APPROPRIATE SIGNING IS INSTALLED AS PER DWG S-1429-95, WITH FLAGPERSONS IN OPERATION
- WHEN SWITCHING FROM ONE STAGE OF CONSTRUCTION TO THE NEXT, UTILIZE LIGHTED ARROW PANELS AND EMPLOY FLAGPERSONS. ENSURE APPROPRIATE SIGNING
- ORANGE FLAGS TO BE INSTALLED ON ALL SIGNS DURING DAYLIGHT HOURS
- FLASHERS TO BE INSTALLED AT ALL BRIDGE CONSTRUCTION AHEAD SIGNS AND A FEW ON BARRICADES AT NIGHT AS DETERMINED BY ENGINEER
- ALL SIGNS NOT IN EFFECT TO BE COVERED OR TAKEN DOWN
- ALL SIGNS SHOWN ARE AT MINIMUM DISTANCES WHICH MAY BE INCREASED OR REGULATED DEPENDENT ON CONDITIONS
- WHEN FLAGPERSONS ARE EMPLOYED (THEY MUST BE CERTIFIED), THEY MUST STAND WITHIN THE 50 km/h ZONE AND ARE REQUIRED TO WEAR REFLECTORIZED VESTS AND WHITE COVERALLS AT ALL TIMES. STOP AND GO PADDLES SHALL BE USED BOTH NIGHT AND DAY. SIGNAL WANDS ARE TO BE USED ON FLASHLIGHTS AT NIGHT
- ALL SIGNS ARE TO BE KEPT CLEAN, DAMAGED OR WORN OUT SIGNS ARE TO BE REPLACED
- FLOODLIGHTS ARE OPTIONAL. THEIR NEED SHALL BE AS DETERMINED BY THE ENGINEER, DEPENDENT ON SIGHT DISTANCES AND TRAFFIC DENSITIES
- ONE WEEK PRIOR TO MOVING TO SITE, CONTACT THE OFFICE TO ARRANGE FOR REVISIONS TO PAVEMENT MARKINGS
- BRIDGE ENGINEER OR PROJECT MANAGER MAY MAKE ADJUSTMENTS TO SIGNS AS REQUIRED TO SUIT LOCAL OR SITE CONDITIONS

SUPERSEDED
BY TEB 1.116 BY REVISION (96-11-28)
SHEET (D)

ORIGINAL DRAWING APPROVED BY J. RAMOTAR EXECUTIVE DIRECTOR BRIDGE ENGINEERING MAR 23, 1995		Alberta TRANSPORTATION AND UTILITIES BRIDGE ENGINEERING BRANCH								
96-05-17 WATER BARRIER NOTE 95-11-24 WATER BARRIER ADDED AND BARRIER NOTE 95-03-03 REDRAWN FROM S-1428-87 REV 3		SIGNING AND DELINEATION FOR FOUR LANE UNDIVIDED HIGHWAY TWO WAY TRAFFIC MAJOR BRIDGE REPAIRS								
DESIGNED	DRAWN	DATE	CHECKED	DATE	STREAM	LOCATION	HIGHWAY	FILE	SHEET	DRAWING
CMT	HWM	95-03-03	JM	95-03-23					1 of 1	S-1430-95

NOTE: THIS DRAWING HAS BEEN REDUCED TO 22"X34" DO NOT SCALE