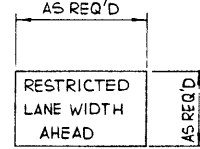


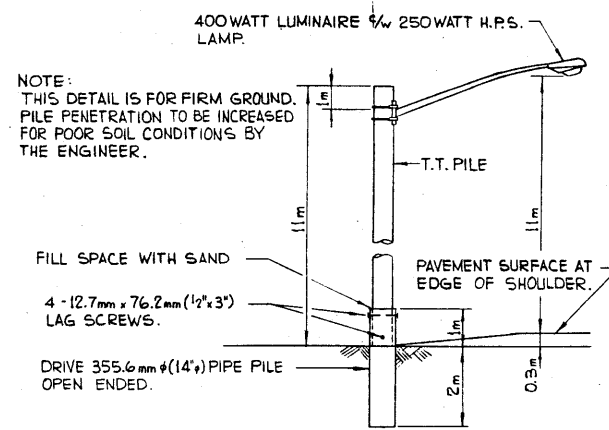
SIGNING MATERIAL LIST:

SIGN No.	MESSAGE OR DESCRIPTION	TOTAL No. REQ'D FROM DRAWING	NUMBER ON HAND	ADDITIONAL SIGNS REQUIRED
WD-24	NARROW BRIDGE	2		
WD-A-41	ROAD WORK	2		
WD-A-43L	ROAD DIVERSION LEFT	1		
WD-A-43R	ROAD DIVERSION RIGHT	1		
WD-A-45	FLAGMAN	4		
WD-101B	BRIDGE CONSTRUCTION AHEAD	5		
WD-154	END CONSTRUCTION	2		
RB-1	MAXIMUM 50	2		
RB-5	NIGHT SPEED 90	2		
RB-1	MAXIMUM 80	4		
RB-1	MAXIMUM 100	2		
RB-5	MAXIMUM SPEED AHEAD 50	2		
RB-7	km/h	12		
RB-25T	KEEP RIGHT	2		
RB-31	DO NOT PASS	2		
RB-31T	DO NOT PASS	2		
RD-155	REDUCE SPEED AHEAD	2		
WD-116-1	BARRICADE 20R & 20L	40		
WD-116-4R	KEEP RIGHT	4		
WD-116-5	ARROW	12		
WD-116	STANDS ONLY	40		
WD-111	BE PREPARED TO STOP	3		
WA-103R or WD-A-42R	ROAD NARROWS RIGHT (WITH LANE MARKINGS SHOWN)	4		
WD-B-3	TWO WAY TRAFFIC	2		
WD-B-3T	TWO WAY TRAFFIC	2		
IC-T-J	1 km 3 km & 5 km	2 EA.		
N/A	DELINEATORS TYPE A + 10%	200		
N/A	FLOODLIGHTS (H.P.S.) 4/4 POLE	4		
N/A	RESTRICTED LANE WIDTH AHEAD (SEE DETAIL)	5		

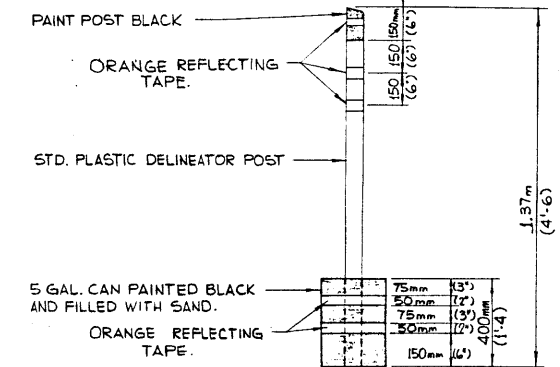
NOTE: LETTERING ON BOTH SIGNS TO BE 150mm HIGH.



SIGN DETAILS
N.T.S.

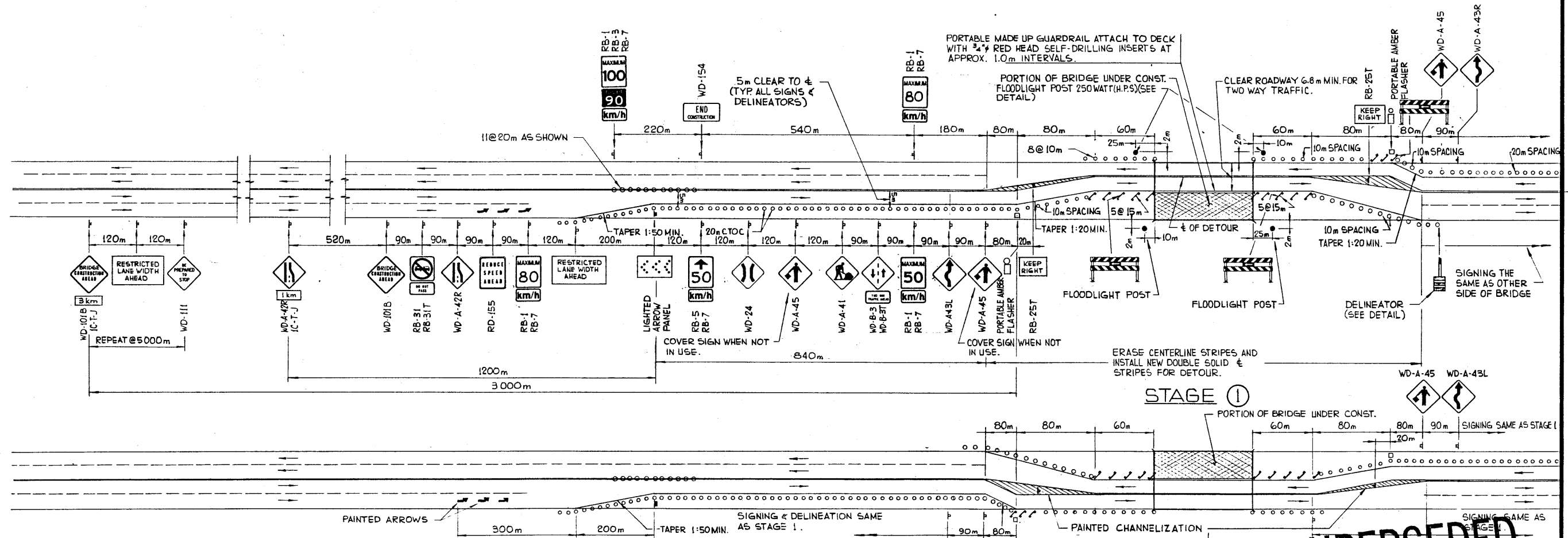


FLOODLIGHT DETAIL
N.T.S.



DELINEATOR DETAIL
N.T.S.

BY S-14 30-87
87-02-05



GENERAL NOTES:

- THIS DRAWING ILLUSTRATES TRAFFIC SIGNING & DELINEATION REQUIREMENTS FOR THE TWO STAGES OF BRIDGE REPAIRS.
- SOME MINOR VARIATION OR MODIFICATIONS MAY BE REQUIRED TO THE SIGNING SHOWN ON THIS DRAWING TO SUIT SPECIAL NEEDS AND SITE CONDITIONS.
- GENERALLY, TWO-WAY TRAFFIC IS TO BE ACCOMMODATED DURING ALL STAGES OF CONSTRUCTION. DUE TO SPECIAL CIRCUMSTANCES AND IN THE EVENT THAT ONLY ONE LANE IS AVAILABLE FOR TRAFFIC ACCOMMODATION, ENSURE THAT THE APPROPRIATE SIGNING IS INSTALLED AS PER DWG. S-1429, WITH FLAGMEN IN OPERATION.
- WHEN SWITCHING FROM ONE STAGE OF CONST. TO THE NEXT, UTILIZE LIGHTED ARROW PANELS & EMPLOY FLAGMEN. ENSURE APPROP. SIGNING.
- RED FLAGS TO BE INSTALLED ON ALL SIGNS DURING DAYLIGHT HOURS.
- FLARES TO BE PLACED AT ALL SIGNS AT NIGHT.
- ALL SIGNS NOT IN EFFECT TO BE COVERED OR TAKEN DOWN.
- ALL SIGNS SHOWN ARE AT MINIMUM DISTANCES WHICH MAY BE INCREASED OR REGULATED DEPENDANT ON CONDITIONS.
- WHEN FLAGMEN ARE EMPLOYED, THEY MUST STAND WITHIN THE 50km/h ZONE AND ARE REQUIRED TO WEAR REFLECTORIZED JACKETS AND ARM BANDS AT ALL TIMES. STOP AND GO PADDLES SHALL BE USED BOTH NIGHT AND DAY. SIGNAL WANDS ARE TO BE USED ON FLASHLIGHTS AT NIGHT.
- ALL SIGNS ARE TO BE KEPT CLEAN. DAMAGED OR WORN OUT SIGNS ARE TO BE REPLACED.
- FLOODLIGHTS ARE OPTIONAL. THEIR NEED SHALL BE DETERMINED BY THE ENGINEER DEPENDANT ON SIGHT DISTANCES AND TRAFFIC DENSITIES.
- ONE WEEK PRIOR TO MOVING TO SITE, CONTACT THE OFFICE TO ARRANGE FOR REVISIONS TO PAVEMENT MARKINGS.
- BRIDGE ENGINEER OR PROJECT MANAGER MAY MAKE ADJUSTMENTS TO SIGNS AS REQUIRED TO SUIT SITE OR LOCAL CONDITIONS.

SUPERSEDED
①

APPROVED		Alberta TRANSPORTATION BRIDGE BRANCH		METRIC	
[Signature]		SIGNING AND DELINEATION FOR 4 LANE UNDIVIDED HWY. TWO-WAY TRAFFIC MAJOR BRIDGE REPAIRS		DWG. NO. S-1430	
DATE: OCT. 30/88		DESIGNED: C. THOMPSON		DRAWN BY: A. PHILLIPS	
DATE: 78 04 20		CHECKED BY:		DATE:	
REVISIONS		STREAM		LOCATION	
NO. DATE DESCRIPTION		HWY. NO.		SCALE	
		N.T.S.		FILE NO.	
		SHEET		1 OF 1	