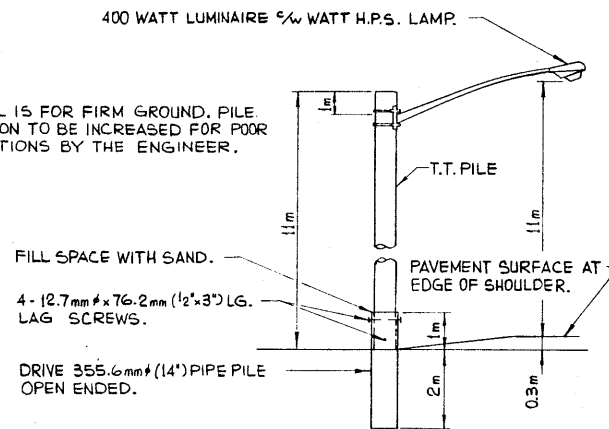


SIGNING MATERIAL LIST:

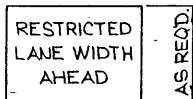
SIGN No.	MESSAGE OR DESCRIPTION	TOTAL NUMBER REQUIRED FROM DRAWING	NUMBER ON HAND	ADDITIONAL SIGNS REQUIRED
WD-A-41	ROAD WORK	2		
WD-A-33R	ROAD NARROWS-LOSS OF LAWE RT.	4		
WD-A-45	FLAGMAN	2		
WD-101B	BRIDGE CONSTRUCTION AHEAD	4		
WD-116	STANDS ONLY	10		
WD-116-1	BARRICADES SR AND SL	10		
WD-116-5	ARROW	5		
WD-154	END CONSTRUCTION	2		
RB-1	MAXIMUM SPEED 70	2		
RB-1	MAXIMUM SPEED 100	2		
RB-5	MAXIMUM SPEED AHEAD 70	2		
RB-31	DO NOT PASS	2		
N/A	RESTRICTED LANE WIDTH AHEAD (SEE DRAWING)	2		
WD-T	DISTANCE 1 km	2		
N/A	DELINEATORS	44		
N/A	FLOODLIGHTS (4.H.P.S.) 1/4 WATT POLE (OPTIONAL)	2		
RB-32	PASSING PERMITTED	2		
RB-32T	PASS WITH CARE	2		
N/A	LIGHTED ARROW PANEL	1		
WD-T	DISTANCE 3 km	2		
WD-B-4T	RESTRICTED LANE WIDTH IN METRES	2		
WD-A-33RT	RIGHT LANE ENDS	2		
WD-A-33RTA	RIGHT LANE ENDS 500m	2		
WD-A-33LTA	LEFT LANE ENDS 500 m	2		
WD-A-33L	ROAD NARROWS-LOSS OF LAWE LT	6		
WD-A-33LT	LEFT LANE ENDS	2		

NOTE:

THIS DETAIL IS FOR FIRM GROUND. PILE PENETRATION TO BE INCREASED FOR POOR SOIL CONDITIONS BY THE ENGINEER.

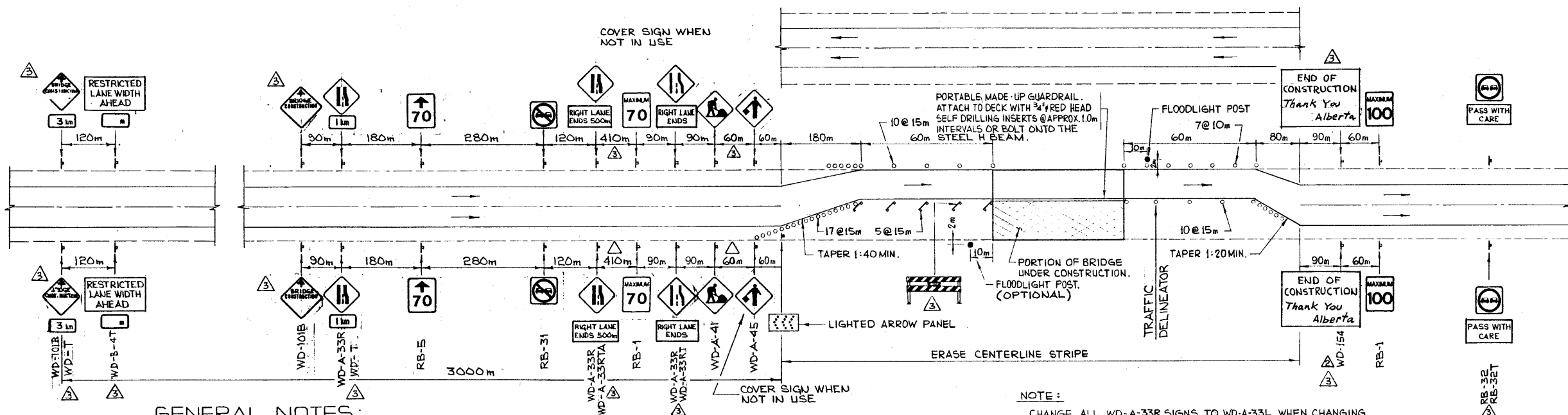


FLOODLIGHT DETAIL
N.T.S.



SIGN DETAIL
N.T.S.

NOTE:
LETTERING ON SIGN TO BE 150mm HIGH.



GENERAL NOTES:

- THIS DRAWING ILLUSTRATES TRAFFIC SIGNING AND DELINEATION REQUIREMENTS FOR THE TWO STAGES OF BRIDGE REPAIRS.
- WHEN SWITCHING FROM ONE STAGE OF CONSTRUCTION TO THE NEXT, EMPLOY FLAGMEN AND ENSURE APPROPRIATE SIGNING.
- RED FLAGS TO BE INSTALLED ON ALL SIGNS DURING DAYLIGHT HOURS.
- FLASHERS TO BE PLACED AT ALL SIGNS INCLUDING BARRICADES AT NIGHT.
- ALL SIGNS NOT IN EFFECT TO BE COVERED OR TAKEN DOWN.
- ALL SIGNS SHOWN ARE AT MINIMUM DISTANCES WHICH MAY BE INCREASED OR REGULATED DEPENDENT ON CONDITIONS.
- WHEN FLAGMEN ARE EMPLOYED, THEY ARE REQUIRED TO WEAR REFLECTORIZED JACKETS AND WHITE COVERALLS AT ALL TIMES. STOP AND GO PADDLES SHALL BE USED BOTH NIGHT AND DAY. SIGNAL WANDS ARE TO BE USED ON FLASHLIGHTS AT NIGHT.
- ALL SIGNS ARE TO BE KEPT CLEAN. DAMAGED OR WORN OUT SIGNS ARE TO BE REPLACED.
- FLOODLIGHTS ARE OPTIONAL. THEIR NEED SHALL BE DETERMINED BY THE ENGINEER, DEPENDENT ON SITE CONDITIONS AND TRAFFIC DENSITIES.
- ONE WEEK PRIOR TO MOVING TO SITE CONTACT OFFICE TO ARRANGE FOR REVISIONS TO PAVEMENT MARKINGS.
- BRIDGE ENGINEER OR PROJECT MANAGER MAY MAKE ADJUSTMENTS TO SIGNS AS REQUIRED TO SUIT LOCAL OR SITE CONDITIONS.

NOTE:

CHANGE ALL WD-A-33R SIGNS TO WD-A-33L WHEN CHANGING FROM THE CONSTRUCTION STAGE SHOWN TO THE NEXT STAGE.
CHANGE ALL WD-A-33RTA AND WD-A-33RT SIGNS TO WD-A-33LTA AND WD-A-33LT WHEN CHANGING FROM THE CONSTRUCTION STAGE SHOWN TO THE NEXT STAGE.

SUPERSEDED
SUPERSEDED
BY S-1431-95 BY REVISION 95-03-01

② ③

NO.	DATE	DESCRIPTION	BY	CHK'D.
1	90-10-25	ADDITION AND CHANGES TO SIGNS, SIGN SPACING AND MATERIAL LIST	W.S.V. J.M.	
2	87-05-06	CHANGED SIGN NO FROM WD-154 TO WD-154(B)	W.A.B. J.M.	
3	87-02-05	REDRAWN FROM S-1431	W.A.B. J.M.	

DESIGNED	DRAWN BY	DATE	CHECKED BY	DATE
C. THOMPSON	A. PHILLIPS	78 07 05		

APPROVED	DATE
<i>[Signature]</i>	March 23, 1987

Albarta	TRANSPORTATION	METRIC
BRIDGE BRANCH		
SIGNING AND DELINEATION FOR FOUR LANE DIVIDED HIGHWAY MAJOR BRIDGE REPAIRS		

DESIGNED	DRAWN BY	DATE	CHECKED BY	DATE	STREAM	LOCATION	HWY. NO.	SCALE	FILE NO.	SHEET	DWG. NO.
C. THOMPSON	A. PHILLIPS	78 07 05						N.T.S.		1 OF 1	S-1431-87