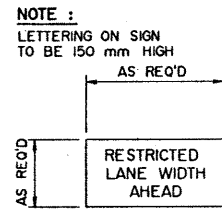


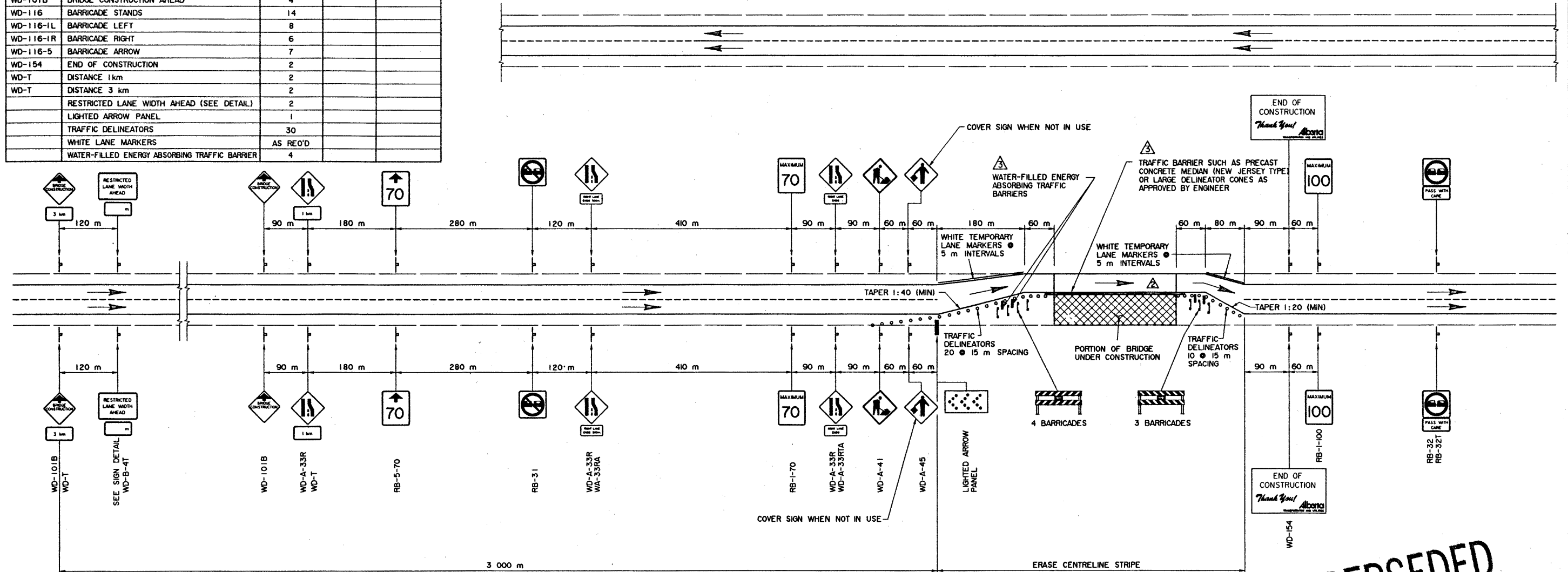
SIGNING MATERIALS LIST

SIGN NO.	MESSAGE OR DESCRIPTION	TOTAL NO. REQ'D FROM DRAWING	NUMBER ON HAND	ADDITIONAL SIGNS REQUIRED
RB-1-70	MAXIMUM SPEED 70	2		
RB-1-100	MAXIMUM SPEED 100	2		
RB-5-70	MAXIMUM SPEED AHEAD 70	2		
RB-31	DO NOT PASS	2		
RB-32	PASSING PERMITTED	2		
RB-32T	PASS WITH CARE	2		
WA-33LA	LEFT LANE ENDS 500 m	2		
WA-33RA	RIGHT LANE ENDS 500 m	2		
WD-A-33L	ROAD NARROWS-LOSS OF LANE LEFT	6		
WD-A-33R	ROAD NARROWS-LOSS OF LANE RIGHT	6		
WD-A-33LTA	LEFT LANE ENDS	2		
WD-A-33RTA	RIGHT LANE ENDS	2		
WD-A-41	ROAD WORK	2		
WD-A-45	FLAGPERSON	2		
WD-B-4T	RESTRICTED LANE WIDTH IN METRES	2		
WD-101B	BRIDGE CONSTRUCTION AHEAD	4		
WD-116	BARRICADE STANDS	14		
WD-116-1L	BARRICADE LEFT	8		
WD-116-1R	BARRICADE RIGHT	6		
WD-116-5	BARRICADE ARROW	7		
WD-154	END OF CONSTRUCTION	2		
WD-T	DISTANCE 1km	2		
WD-T	DISTANCE 3 km	2		
	RESTRICTED LANE WIDTH AHEAD (SEE DETAIL)	2		
	LIGHTED ARROW PANEL	1		
	TRAFFIC DELINEATORS	30		
	WHITE LANE MARKERS	AS REQ'D		
	WATER-FILLED ENERGY ABSORBING TRAFFIC BARRIER	4		



SIGN DETAIL

NTS



PLAN

NTS

GENERAL NOTES

- THIS DRAWING ILLUSTRATES TRAFFIC SIGNING AND DELINEATION REQUIREMENTS FOR THE TWO STAGES OF BRIDGE REPAIRS
- WHEN SWITCHING FROM ONE STAGE OF CONSTRUCTION TO THE NEXT, UTILIZE LIGHTED ARROW PANEL AND EMPLOY FLAGPERSONS. ENSURE APPROPRIATE SIGNING
- ORANGE FLAGS TO BE INSTALLED ON ALL SIGNS DURING DAYLIGHT HOURS
- FLASHERS TO BE INSTALLED AT ALL BRIDGE CONSTRUCTION AHEAD SIGNS AND A FEW ON BARRICADES AT NIGHT AS DETERMINED BY ENGINEER
- ALL SIGNS NOT IN EFFECT TO BE COVERED OR TAKEN DOWN
- ALL SIGNS SHOWN ARE AT MINIMUM DISTANCES WHICH MAY BE INCREASED OR REGULATED DEPENDENT ON CONDITIONS
- WHEN FLAGPERSONS ARE EMPLOYED (THEY MUST BE CERTIFIED), THEY MUST STAND WITHIN THE 70 km/h ZONE AND ARE REQUIRED TO WEAR REFLECTORIZED VESTS AND WHITE COVERALLS AT ALL TIMES. STOP AND GO PADDLES SHALL BE USED BOTH NIGHT AND DAY. SIGNAL WANDS ARE TO BE USED ON FLASHLIGHTS AT NIGHT
- ALL SIGNS ARE TO BE KEPT CLEAN, DAMAGED OR WORN OUT SIGNS ARE TO BE REPLACED
- FLOODLIGHTS ARE OPTIONAL, THEIR NEED SHALL BE AS DETERMINED BY THE ENGINEER, DEPENDENT ON SIGN DISTANCES AND TRAFFIC DENSITIES
- ONE WEEK PRIOR TO MOVING TO SITE, CONTACT THE OFFICE TO ARRANGE FOR REVISIONS TO PAVEMENT MARKINGS
- BRIDGE ENGINEER OR PROJECT MANAGER MAY MAKE ADJUSTMENTS TO SIGNS AS REQUIRED TO SUIT LOCAL OR SITE CONDITIONS

NOTE :

CHANGE ALL WD-A-33R SIGNS TO WD-A-33L WHEN CHANGING FROM THE CONSTRUCTION STAGE SHOWN TO THE NEXT STAGE.
CHANGE ALL WA-33RA AND WD-A-33RTA SIGNS TO WA-33LA AND WD-A-33LTA WHEN CHANGING FROM THE CONSTRUCTION STAGE SHOWN TO THE NEXT STAGE.

SUPERSEDED

6

6

DESIGNED		DRAWN		DATE		CHECKED		DATE		STREAM		LOCATION		HIGHWAY		FILE		SHEET		DRAWING	
CMT		HWM		95-03-01		JM		95-03-06										1 of 1		S-1431-95	

ORIGINAL DRAWING APPROVED BY J. RAMOTAR EXECUTIVE DIRECTOR BRIDGE ENGINEERING MARCH 06, 1995	Alberta TRANSPORTATION AND UTILITIES BRIDGE ENGINEERING BRANCH SIGNING AND DELINEATION FOR FOUR LANE DIVIDED HIGHWAY MAJOR BRIDGE REPAIRS
--	---