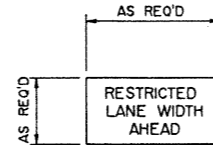


**SIGNING MATERIALS LIST**

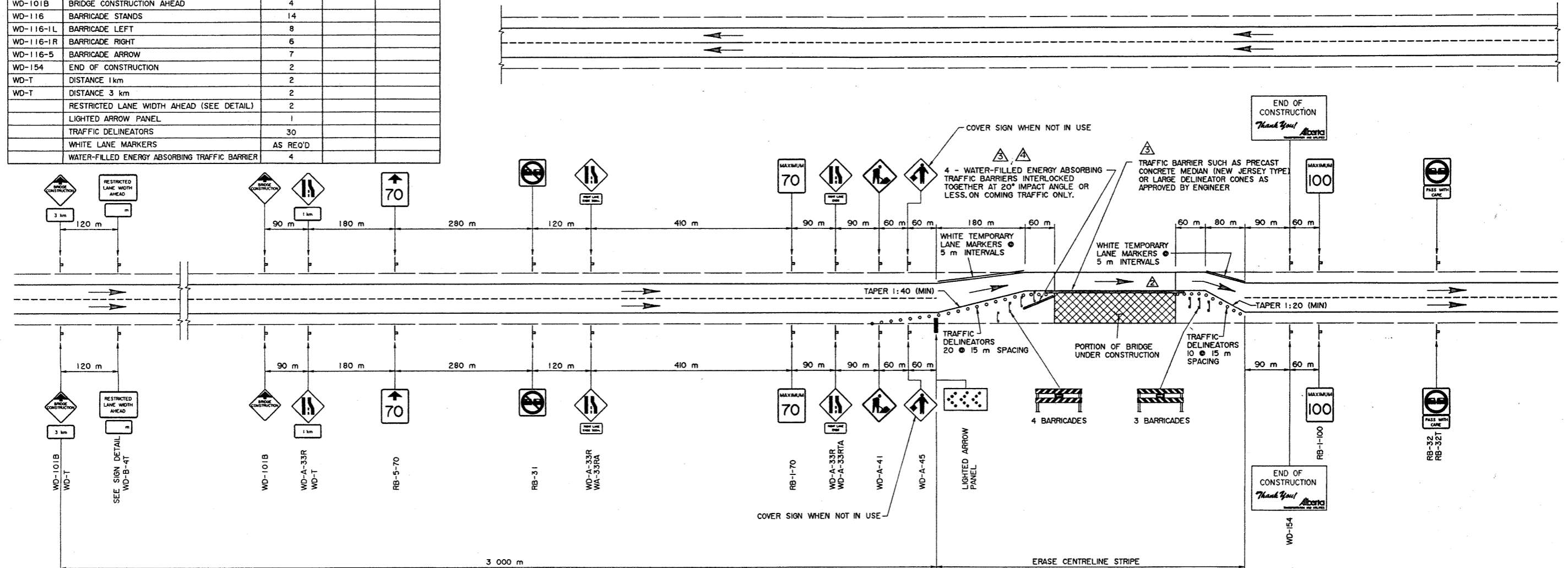
SIGN NO.	MESSAGE OR DESCRIPTION	TOTAL NO. REQ'D FROM DRAWING	NUMBER ON HAND	ADDITIONAL SIGNS REQUIRED
RB-1-70	MAXIMUM SPEED 70	2		
RB-1-100	MAXIMUM SPEED 100	2		
RB-5-70	MAXIMUM SPEED AHEAD 70	2		
RB-31	DO NOT PASS	2		
RB-32	PASSING PERMITTED	2		
RB-32T	PASS WITH CARE	2		
WA-33LA	LEFT LANE ENDS 500 m	2		
WA-33RA	RIGHT LANE ENDS 500 m	2		
WD-A-33L	ROAD NARROWS-LOSS OF LANE LEFT	6		
WD-A-33R	ROAD NARROWS-LOSS OF LANE RIGHT	6		
WD-A-33LTA	LEFT LANE ENDS	2		
WD-A-33RTA	RIGHT LANE ENDS	2		
WD-A-41	ROAD WORK	2		
WD-A-45	FLAGPERSON	2		
WD-B-4T	RESTRICTED LANE WIDTH IN METRES	2		
WD-101B	BRIDGE CONSTRUCTION AHEAD	4		
WD-116	BARRICADE STANDS	14		
WD-116-1L	BARRICADE LEFT	8		
WD-116-1R	BARRICADE RIGHT	6		
WD-116-5	BARRICADE ARROW	7		
WD-154	END OF CONSTRUCTION	2		
WD-T	DISTANCE 1 km	2		
WD-T	DISTANCE 3 km	2		
	RESTRICTED LANE WIDTH AHEAD (SEE DETAIL)	2		
	LIGHTED ARROW PANEL	1		
	TRAFFIC DELINEATORS	30		
	WHITE LANE MARKERS	AS REQ'D		
	WATER-FILLED ENERGY ABSORBING TRAFFIC BARRIER	4		

NOTE :  
LETTERING ON SIGN  
TO BE 150 mm HIGH



**SIGN DETAIL**

NTS



**PLAN**

NTS

**GENERAL NOTES**

- THIS DRAWING ILLUSTRATES TRAFFIC SIGNING AND DELINEATION REQUIREMENTS FOR THE TWO STAGES OF BRIDGE REPAIRS
- WHEN SWITCHING FROM ONE STAGE OF CONSTRUCTION TO THE NEXT, UTILIZE LIGHTED ARROW PANEL AND EMPLOY FLAGPERSONS. ENSURE APPROPRIATE SIGNING
- ORANGE FLAGS TO BE INSTALLED ON ALL SIGNS DURING DAYLIGHT HOURS
- FLASHERS TO BE INSTALLED AT ALL BRIDGE CONSTRUCTION AHEAD SIGNS AND A FEW ON BARRICADES AT NIGHT AS DETERMINED BY ENGINEER
- ALL SIGNS NOT IN EFFECT TO BE COVERED OR TAKEN DOWN
- ALL SIGNS SHOWN ARE AT MINIMUM DISTANCES WHICH MAY BE INCREASED OR REGULATED DEPENDENT ON CONDITIONS
- WHEN FLAGPERSONS ARE EMPLOYED (THEY MUST BE CERTIFIED), THEY MUST STAND WITHIN THE 70 km/h ZONE AND ARE REQUIRED TO WEAR REFLECTORIZED VESTS AND WHITE COVERALLS AT ALL TIMES. STOP AND GO PADDOLES SHALL BE USED BOTH NIGHT AND DAY. SIGNAL WANDS ARE TO BE USED ON FLASHLIGHTS AT NIGHT
- ALL SIGNS ARE TO BE KEPT CLEAN, DAMAGED OR WORN OUT SIGNS ARE TO BE REPLACED
- FLOODLIGHTS ARE OPTIONAL THEIR NEED SHALL BE AS DETERMINED BY THE ENGINEER, DEPENDENT ON SIGHT DISTANCES AND TRAFFIC DENSITIES
- ONE WEEK PRIOR TO MOVING TO SITE, CONTACT THE OFFICE TO ARRANGE FOR REVISIONS TO PAVEMENT MARKINGS
- BRIDGE ENGINEER OR PROJECT MANAGER MAY MAKE ADJUSTMENTS TO SIGNS AS REQUIRED TO SUIT LOCAL OR SITE CONDITIONS

NOTE :

CHANGE ALL WD-A-33R SIGNS TO WD-A-33L WHEN CHANGING FROM THE CONSTRUCTION STAGE SHOWN TO THE NEXT STAGE.  
CHANGE ALL WA-33RA AND WD-A-33RTA SIGNS TO WA-33LA AND WD-A-33LTA WHEN CHANGING FROM THE CONSTRUCTION STAGE SHOWN TO THE NEXT STAGE.

**SUPERSEDED**  
By TEB 1.113 BY REVISION Δ (96-11-2B)  
SHEET 0

REV	DATE	REVISIONS	BY
96-05-17		WATER BARRIER NOTE	JM
95-11-24		WATER BARRIER ADDED AND BARRIER NOTE	JM
95-04-10		LANE WIDTH REDUCED	JM
95-03-01		REDRAWN FROM S-1431-87 REV 3	JM

ORIGINAL DRAWING APPROVED BY  
J. RAMOTAR  
EXECUTIVE DIRECTOR  
BRIDGE ENGINEERING  
MARCH 06, 1995

**Alberta** TRANSPORTATION AND UTILITIES  
BRIDGE ENGINEERING BRANCH

**SIGNING AND DELINEATION FOR  
FOUR LANE DIVIDED HIGHWAY  
MAJOR BRIDGE REPAIRS**

DESIGNED	DRAWN	DATE	CHECKED	DATE	STREAM	LOCATION	HIGHWAY	FILE	SHEET	DRAWING
CMT	HWM	95-03-01	JM	95-03-06					1 of 1	S-1431-95

NOTE: THIS DRAWING HAS BEEN REDUCED TO 22"X34" DO NOT SCALE

PLOTTED MAY 17, 1996 5431-94.RW4