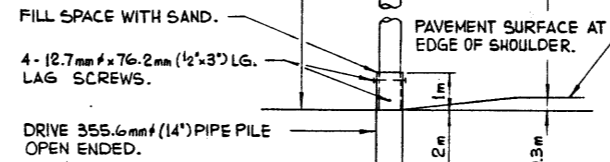


**SIGNING MATERIAL LIST:**

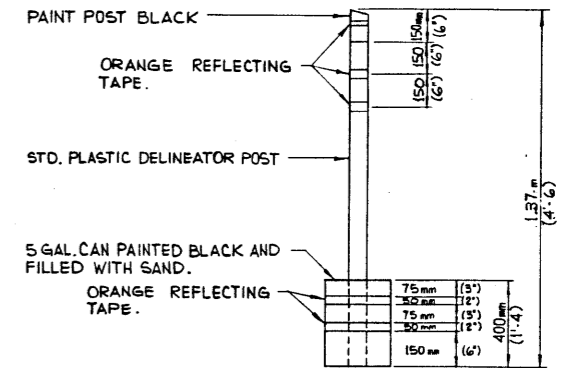
SIGN No.	MESSAGE OR DESCRIPTION	TOTAL NUMBER REQUIRED FROM DRAWING	NUMBER ON HAND	ADDITIONAL SIGNS REQUIRED
WD-A-41	ROAD WORK	2		
WD-A-42R	ROAD NARROWS	4		
WD-A-45	FLAGMAN	2		
WD-101B	BRIDGE CONSTRUCTION AHEAD	2		
WD-116	STANDS ONLY	5		
WD-116-1	BARRICADES 5R AND 5L	10		
WD-116-5	ARROW	5		
WD-154	END CONSTRUCTION	2		
RB-1	MAXIMUM SPEED 70	4		
RB-1	MAXIMUM SPEED 100	2		
RB-5	MAXIMUM SPEED AHEAD 70	2		
RB-7	km/h	8		
RB-31	DO NOT PASS	4		
RB-31T	DO NOT PASS	4		
N/A	DELINEATORS TYPE A	44		
N/A	FLOODLIGHTS (H.P.S.) 4/4 POLE	2		
WD-A-42L	ROAD NARROWS	4		
RB-3	NIGHT SPEED 90	2		

400 WATT LUMINAIRE 4/4 WATT H.P.S. LAMP.

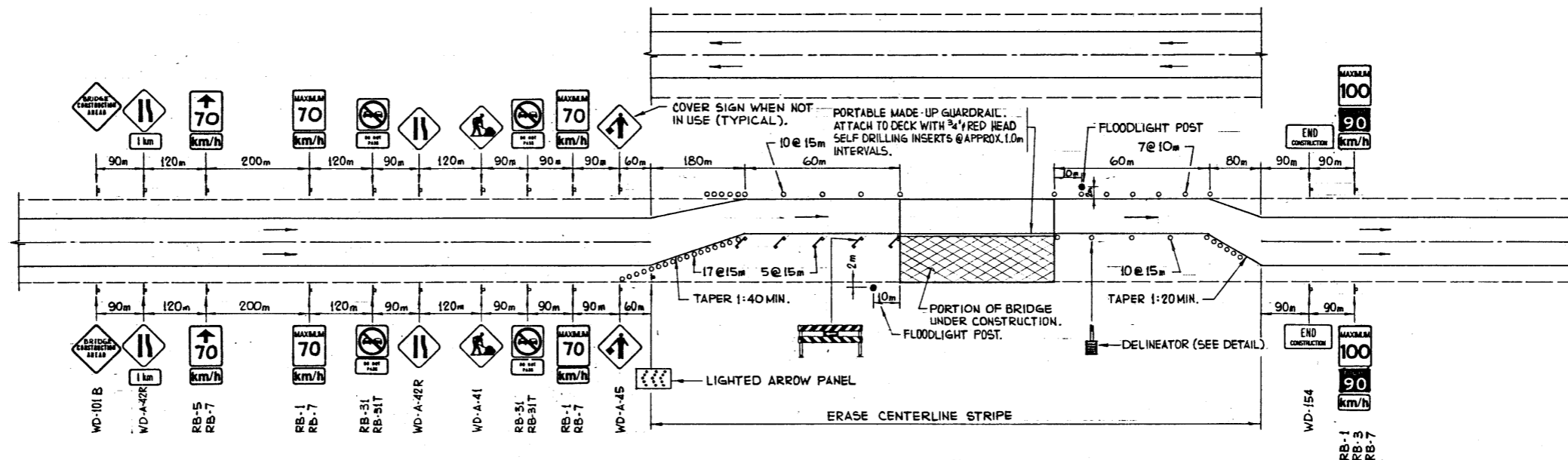
**NOTE:**  
THIS DETAIL IS FOR FIRM GROUND. PILE PENETRATION TO BE INCREASED FOR POOR SOIL CONDITIONS BY THE ENGINEER.



**FLOODLIGHT DETAIL**  
N.T.S.



**DELINEATOR DETAIL**  
TYPE A  
N.T.S.



**NOTE:**  
CHANGE ALL WD-A-42R SIGNS TO WD-A-42L WHEN CHANGING FROM THE CONSTRUCTION STAGE SHOWN TO THE NEXT STAGE.

**GENERAL NOTES:**

- THIS DRAWING ILLUSTRATES TRAFFIC SIGNING AND DELINEATION REQUIREMENTS FOR THE TWO STAGES OF BRIDGE REPAIRS.
- SOME MINOR VARIATION OR MODIFICATIONS MAY BE REQUIRED TO THE SIGNING SHOWN ON THIS DRAWING TO SUIT SPECIAL NEEDS AND SITE CONDITIONS.
- WHEN SWITCHING FROM ONE STAGE OF CONSTRUCTION TO THE NEXT, EMPLOY FLAGMEN AND ENSURE APPROPRIATE SIGNING.
- RED FLAGS TO BE INSTALLED ON ALL SIGNS DURING DAYLIGHT HOURS.
- FLARES TO BE PLACED AT ALL SIGNS AT NIGHT.
- ALL SIGNS NOT IN EFFECT TO BE COVERED OR TAKEN DOWN.
- ALL SIGNS SHOWN ARE AT MINIMUM DISTANCES WHICH MAY BE INCREASED OR REGULATED DEPENDANT ON CONDITIONS.
- WHEN FLAGMEN ARE EMPLOYED, THEY ARE REQUIRED TO WEAR REFLECTORIZED JACKETS AND ARMBANDS AT ALL TIMES. STOP AND GO PADDLES SHALL BE USED BOTH NIGHT AND DAY. SIGNAL WANDS ARE TO BE USED ON FLASHLIGHTS AT NIGHT.
- ALL SIGNS ARE TO BE KEPT CLEAN. DAMAGED OR WORN OUT SIGNS ARE TO BE REPLACED.
- FLOODLIGHTS ARE OPTIONAL. THEIR NEED SHALL BE DETERMINED BY THE ENGINEER DEPENDANT ON SITE CONDITIONS AND TRAFFIC DENSITIES.
- ONE WEEK PRIOR TO MOVING TO SITE, CONTACT OFFICE TO ARRANGE FOR REVISIONS TO PAVEMENT MARKINGS.
- BRIDGE ENGINEER OR PROJECT MANAGER MAY MAKE ADJUSTMENTS TO SIGNS AS REQUIRED TO SUIT LOCAL OR SITE CONDITIONS.

**SUPERSEDED**

**SUPERSEDED** BY S-1431-87  
87-02-05

APPROVED		Albera TRANSPORTATION BRIDGE BRANCH		METRIC	
DATE 00T 30/28		SIGNING AND DELINEATION FOR FOUR LANE DIVIDED HIGHWAY MAJOR BRIDGE REPAIRS		DWG. NO. S-1431	
DESIGNED	DRAWN BY	DATE	CHECKED BY	DATE	STREAM
C. THOMPSON	A. PHILLIPS	78 07 05			
NO.	DATE	DESCRIPTION			
REVISIONS					
SCALE	FILE NO.	SHEET			
N.T.S.		1 OF 1			

AT & U - RECORDS CENTRE