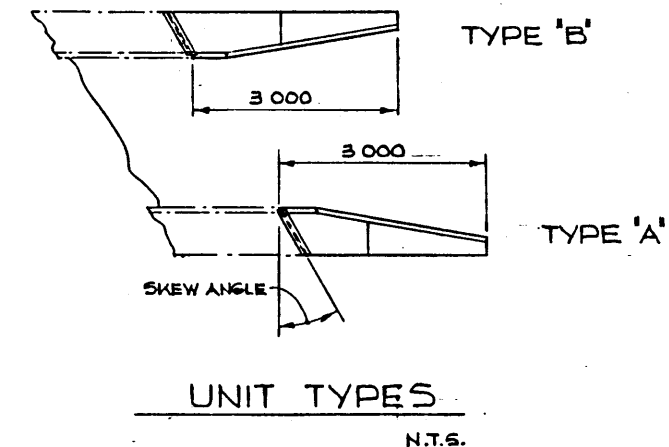
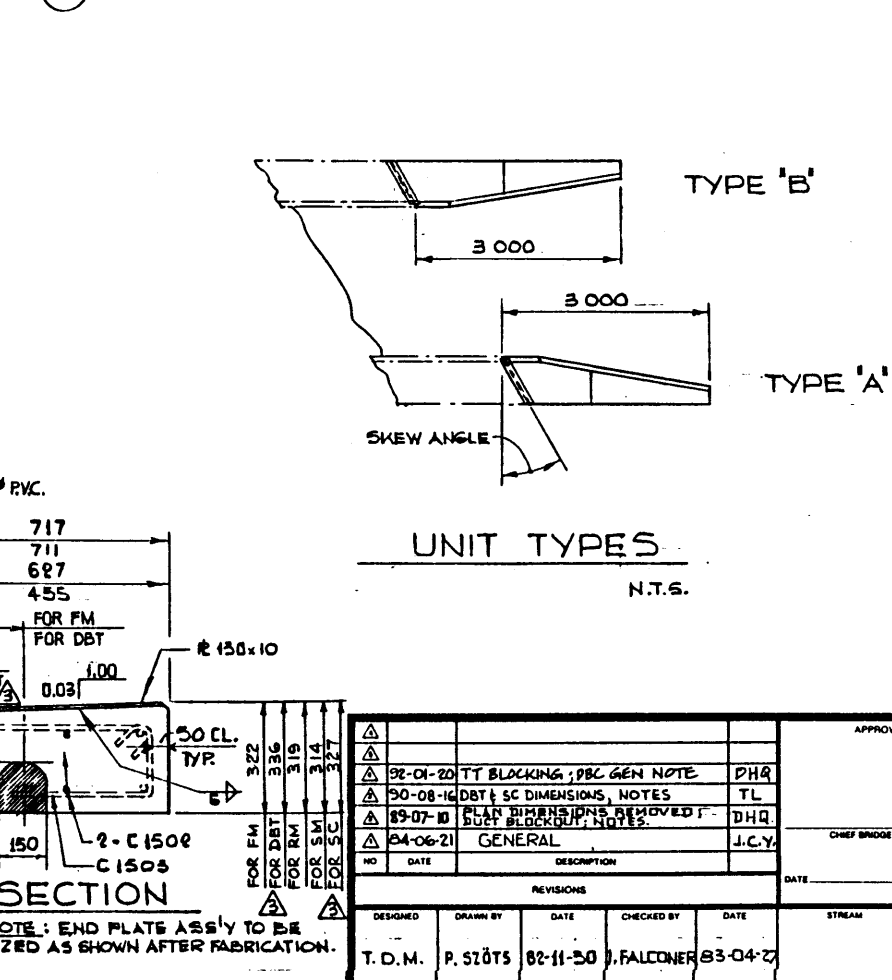
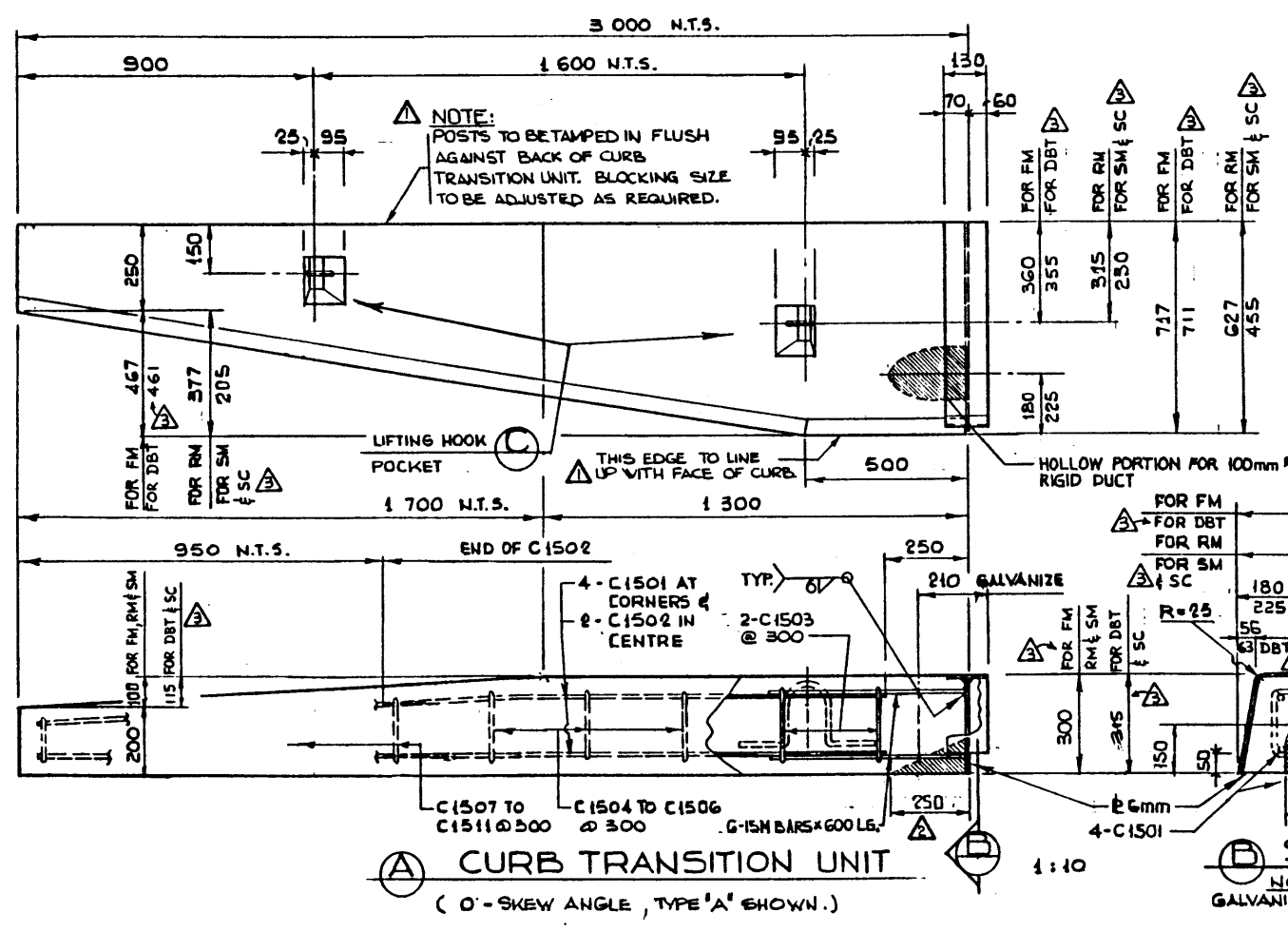
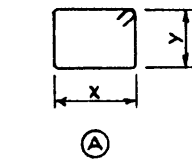


**BAR LIST: (FOR ONE CURB TRANSITION UNIT)**

MARK	SIZE	NO.	TYPE	X	Y	LENGTH	MASS	
FOR ALL	C 1501	15	4	STR		2 700	17	
	C 1502	1	2	STR		1 800	6	
FOR DBT GIRDER	C 1503	2	A	560	200	1 800	6	
	C 1504 TO C 1506	3	A	VARIES FROM 494 TO 382 IN 56 INCR'T. (1 OF EA.)	200	1 560 AV.	7	
	C 1507 TO C 1511	5	A	VARIES FROM 326 TO 108 IN 56 INCR'T. (1 OF EA.)	VARIES FROM 172 TO 100 IN 18 INCR'T.	980 AV.	8	
FOR RM GIRDER	C 1505	2	A	470	200	1 620	5	
	C 1504 TO C 1506	3	A	VARIES FROM 418 TO 329 IN 45 INCR'T. (1 OF EA.)	200	1 430 AV.	7	
	C 1507 TO C 1511	5	A	VARIES FROM 284 TO 104 IN 45 INCR'T. (1 OF EA.)	VARIES FROM 172 TO 100 IN 18 INCR'T.	940 AV.	7	
FOR SM & SC GIRDER	C 1503	2	A	300	200	1 280	4	
	C 1504 TO C 1506	3	A	VARIES FROM 270 TO 220 IN 25 INCR'T. (1 OF EA.)	200	1 170 AV.	6	
	C 1507 TO C 1511	5	A	VARIES FROM 195 TO 95 IN 25 INCR'T. (1 OF EA.)	VARIES FROM 172 TO 100 IN 18 INCR'T.	840 AV.	7	
NOTE: ADJUST BAR LENGTHS TO SUIT SKEW.							DBT & FM DBT - CURB UNIT	44
							TOTAL kg FOR RM - CURB UNIT	42
							SM & SC -	40

**BAR TYPES:** N.T.S.  
(BAR DIMENSIONS ARE OUT TO OUT.)



- GENERAL NOTES:**
- ALL EXPOSED CORNERS SHALL HAVE A 20mm CHAMFER OR FILLET.
  - GALVANIZING SHALL BE IN ACCORDANCE WITH A.S.T.M. SPECIFICATION A123 OR A153 AS APPLICABLE.
  - UNITS SHALL CONFORM TO THE REQUIREMENTS OF THE CURRENT ALBERTA GOVERNMENT SPECIFICATION FOR THE MANUFACTURE OF PRESTRESSED AND PRECAST BRIDGE UNITS B-190M.
  - ESTIMATED WEIGHT OF CURB TRANSITION UNITS:  
FOR FM AND DBT = 1050 kg, RM = 1005 kg, SM = 760 kg
  - CONCRETE SHALL BE STANDARD WEIGHT AGGREGATES WITH MAXIMUM AGGREGATE SIZE OF 20 mm. MINIMUM 28 DAY COMPRESSIVE STRENGTH TO BE 35 MPa.
  - ENTRAINED AIR SHALL BE NOT LESS THAN 5%.
  - DIAMETERS OF ALL BENDS SHALL CONFORM TO THE RECOMMENDED MINIMUMS AND ALL HOOKS, UNLESS OTHERWISE NOTED SHALL CONFORM TO THE RECOMMENDED SIZED DETAILED IN THE A.C.I. MANUAL OF STANDARD PRACTICE FOR DETAILING REINFORCED CONCRETE STRUCTURES.
  - CONCRETE SHALL ATTAIN AT LEAST 30% OF THE SPECIFIED 28 DAY COMPRESSIVE STRENGTH BEFORE THE UNITS ARE STRIPPED FROM THE FORMS OR LIFTED.
  - CONCRETE FINISHES -  
CLASS 2: INSIDE FACE OF CURB  
CLASS 3: OUTSIDE FACE OF CURB  
CLASS 6: TOP OF CURB.
  - AN APPROVED SILANE SEALER SHALL BE APPLIED TO ALL CURB FACES EXCEPT FOR THE BOTTOM FACE.
  - FOR DBT GIRDERS, CURB IS DETAILED FOR 165 mm FLANGE THICKNESS. THIS CURB MAY BE USED WITH DBT GIRDERS HAVING 90 mm WEARING SURFACE BY LOWERING CURB 65 mm BELOW ROADWAY SURFACE.
  - FOR DBT GIRDERS, ALL REFERENCES TO "DBT" SHALL BE READ AS "DBC".

NO.	DATE	DESCRIPTION	DESIGNED	DRAWN BY	DATE	CHECKED BY	DATE	STREAM	LOCATION	HWY NO.	SCALE	FILE NO.	SHEET	DRWG NO.
02-01-20		TT BLOCKING, PBC GEN NOTE												
00-08-16		DBT & SC DIMENSIONS, NOTES												
89-07-10		PLAN DIMENSIONS REMOVED FROM TT BLOCKOUT, NOTES.												
04-06-21		GENERAL												

DESIGNED	DRAWN BY	DATE	CHECKED BY	DATE	STREAM	LOCATION	HWY NO.	SCALE	FILE NO.	SHEET	DRWG NO.
T. D. M.	P. SZTOS	82-11-30	J. FALCONER	83-04-27				SHOWN			S-1440