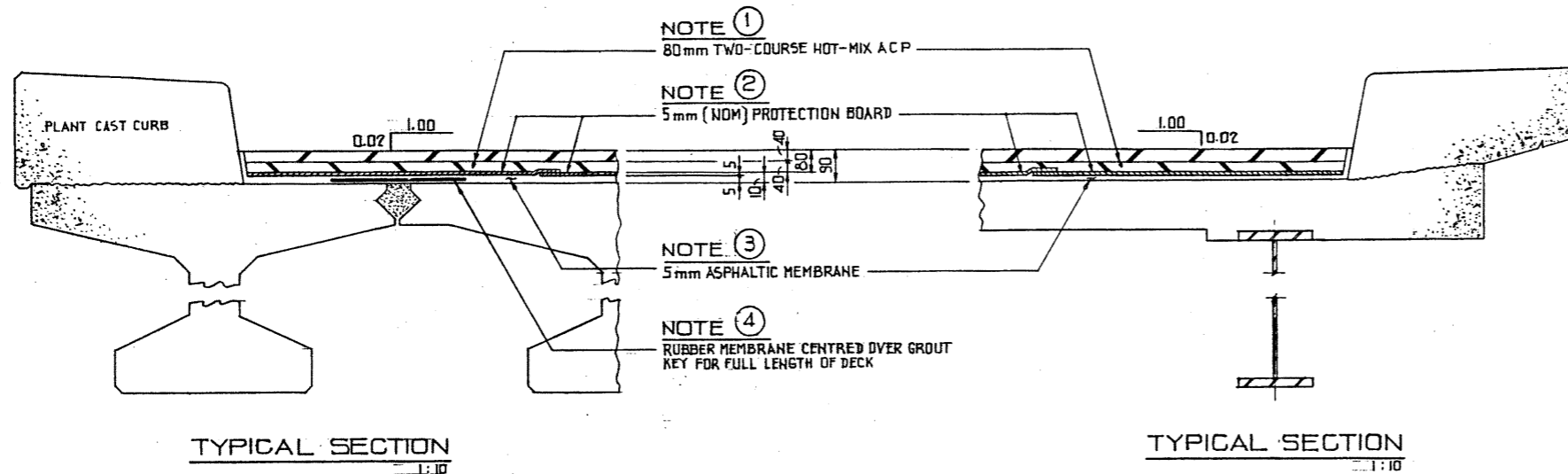


CONCRETE DBT GIRDER BRIDGES

STEEL GIRDER BRIDGES

GENERAL NOTES :

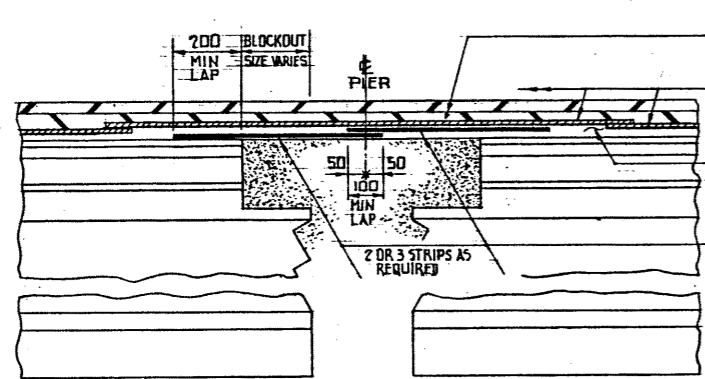


- NOTE ①**
80mm TWO-COURSE HOT-MIX ASPHALTIC CONCRETE PAVEMENT.
- NOTE ②**
5mm (NOM) PROTECTION BOARD. OVERLAP PIECES 12mm MINIMUM TO 25 MAXIMUM. APPLY ASPHALTIC MEMBRANE BETWEEN OVERLAPPED LAYERS. EXTEND TO WITHIN 5mm OF CURB FACE AND OTHER CONCRETE EDGES.
- NOTE ③**
5mm ASPHALTIC MEMBRANE.
- NOTE ④**
1.2mm x 450mm RUBBER MEMBRANE OVER COLD JOINTS AND CRACKS OR POTENTIAL CRACKS.

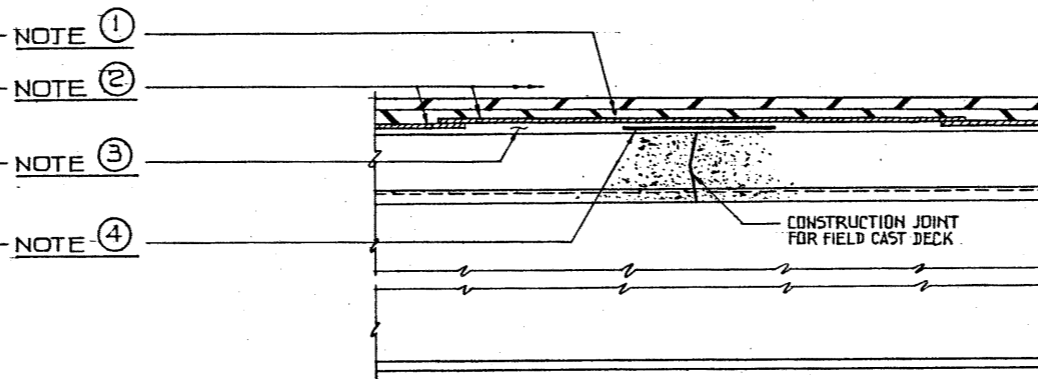
△ NOTE
DECK WATERPROOFING SYSTEM SHALL CONFORM TO THE REQUIREMENTS OF THE CURRENT ALBERTA BRIDGE CONSTRUCTION SPECIFICATIONS SECTION 19 "BRIDGE DECK WATERPROOFING."

TYPICAL SECTION
1:10

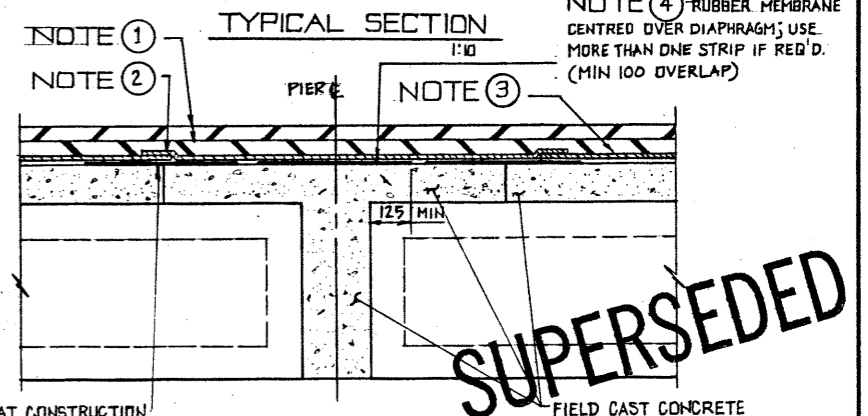
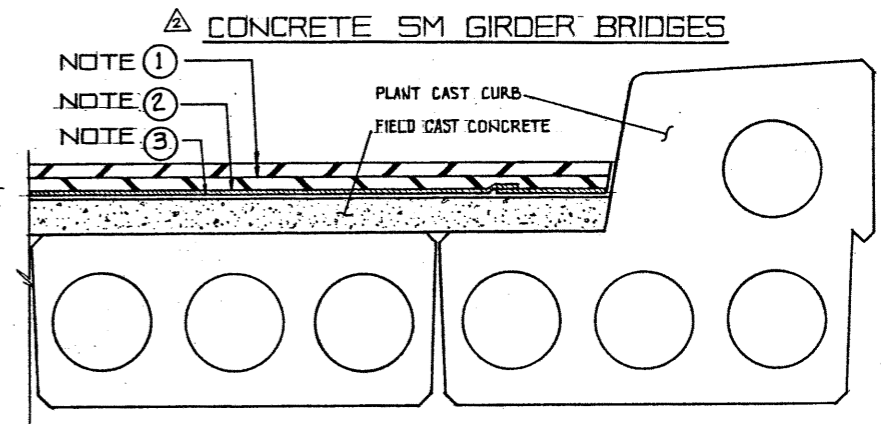
TYPICAL SECTION
1:10



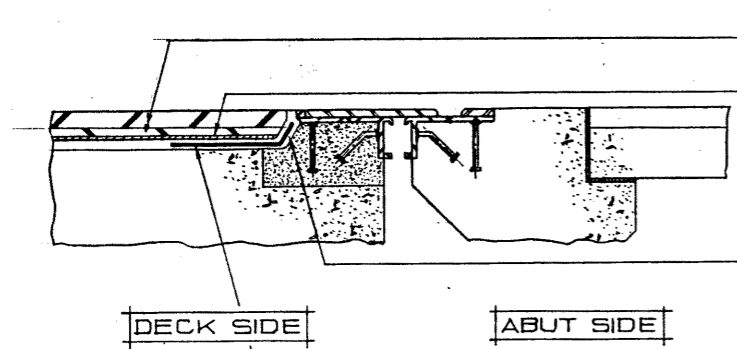
DETAILS AT PIERS
1:10



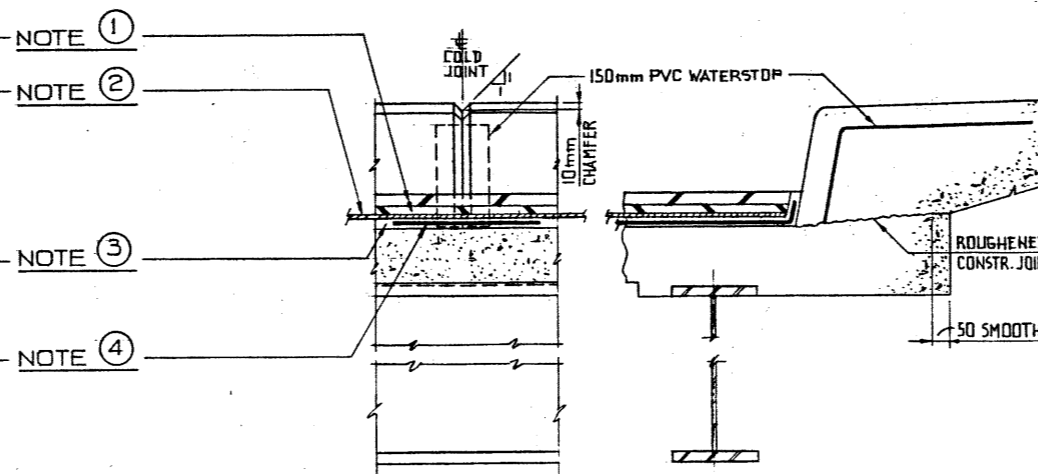
DETAILS AT CONSTRUCTION JOINTS
1:10



DETAILS AT PIERS
1:10



DETAILS AT ABUTMENT EXPANSION ASSEMBLIES
1:10



TYPICAL CURB JOINT DETAILS
1:10

MEMBRANE AT CONSTRUCTION JOINT - NOTE ④ - DETAILS SIMILAR TO AS SHOWN FOR "STEEL GIRDER BRIDGES"

SUPERSEDED
FIELD CAST CONCRETE
NOTE ④ RUBBER MEMBRANE CENTRED OVER DIAPHRAGM; USE MORE THAN ONE STRIP IF REQ'D. (MIN 100 OVERLAP)
BY 2-14-85
85-11-66

RUBBER MEMBRANE AT DECK HOLES

APPLY RUBBER MEMBRANE (NOTE ④) 450mm SQUARE CENTRED OVER THE FOLLOWING HOLES:
1 - DIAPHRAGM ACCESS HOLES
2 - LIFTING HOLES

DETAILS AT ABUTMENT EXPANSION ASSEMBLIES

SIMILAR TO AS SHOWN FOR "CONCRETE DBT GIRDER BRIDGES"

APPROVED				Alberta TRANSPORTATION BRIDGE ENGINEERING BRANCH			
EXECUTIVE DIRECTOR BRIDGE ENGINEERING <i>[Signature]</i> DATE July 8 1985				DECK WATERPROOFING SYSTEM WITH 90mm TWO-COURSE HOT-MIX ASPHALTIC CONCRETE PAVEMENT			
REVISIONS DESIGNED: DHQ DRAWN: MMF DATE: 85-06-06 CHECKED: DATE: STREAM: LOCATION: HIGHWAY: FILE: SHEET: DRAWING:							
of S-1443							

