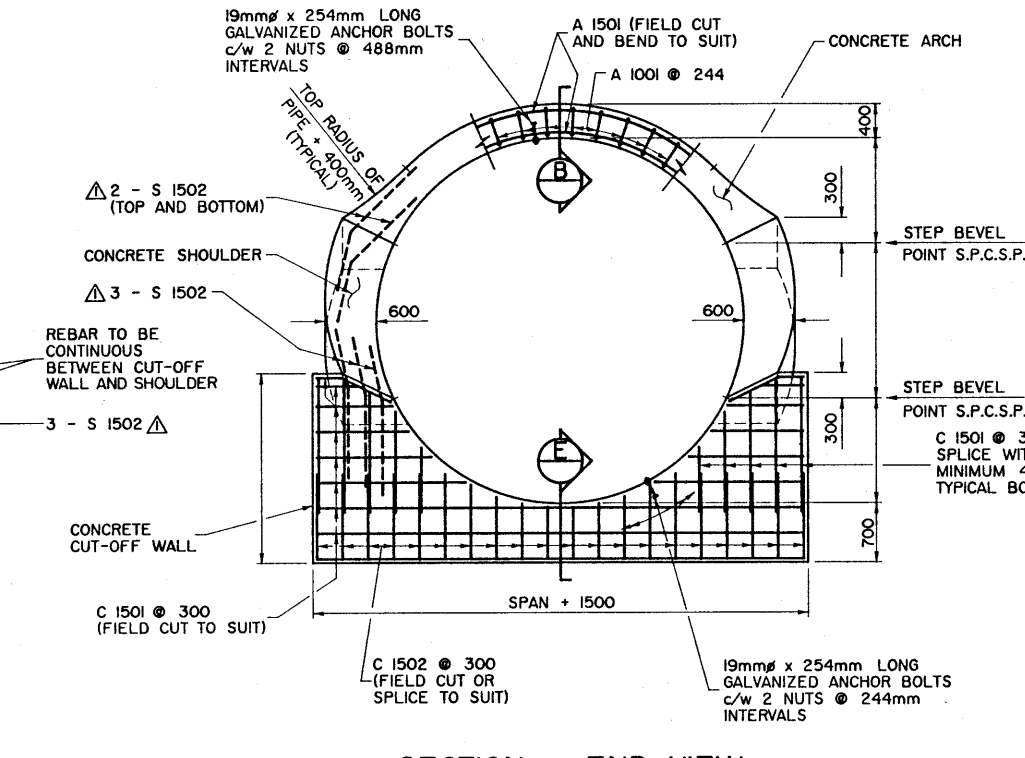
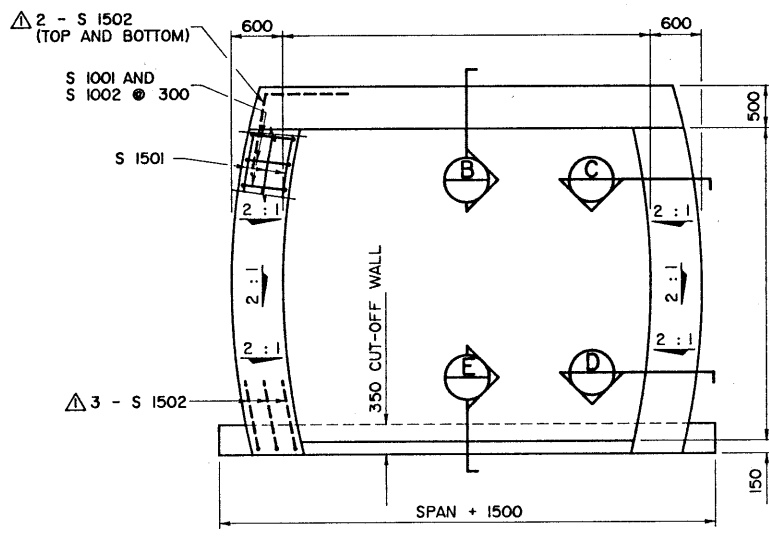


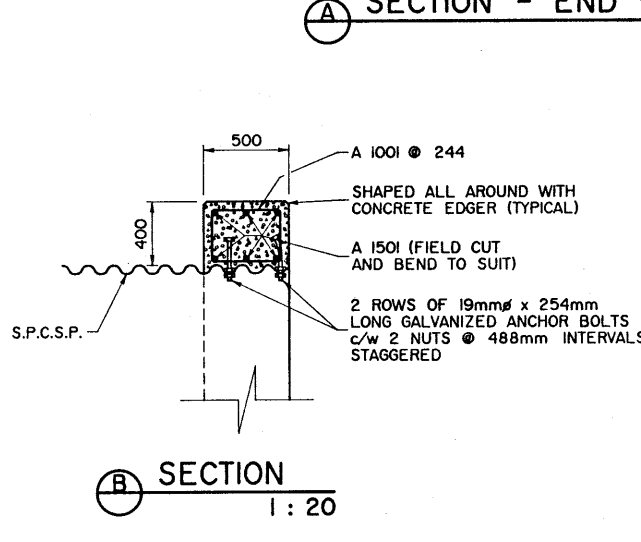
LONGITUDINAL END SECTION
N.T.S.



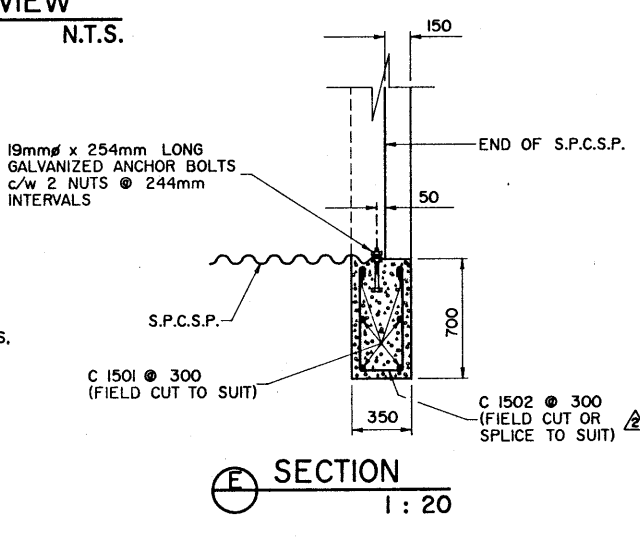
SECTION - END VIEW
N.T.S.



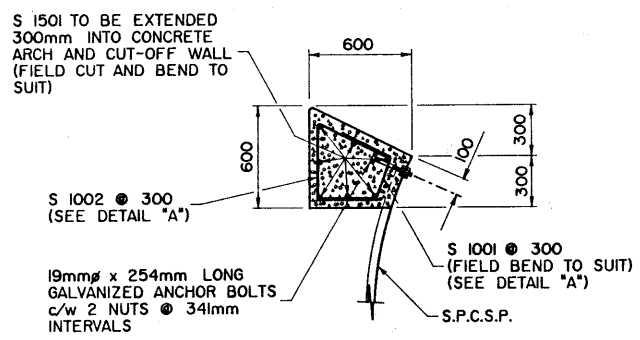
VIEW OF CONCRETE COLLAR
N.T.S.



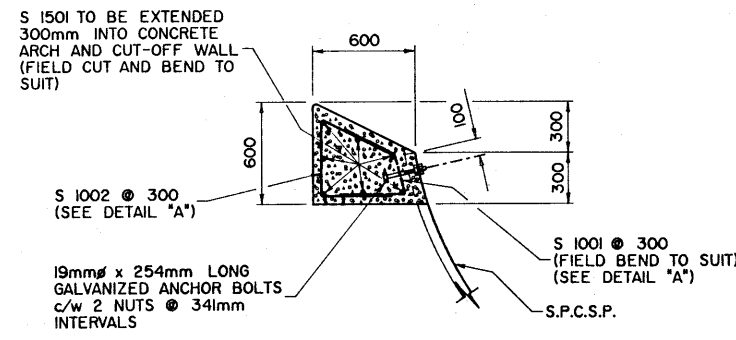
SECTION B
1:20



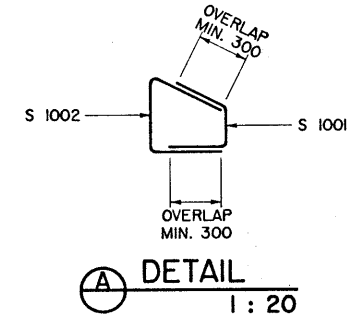
SECTION E
1:20



SECTION C
1:20



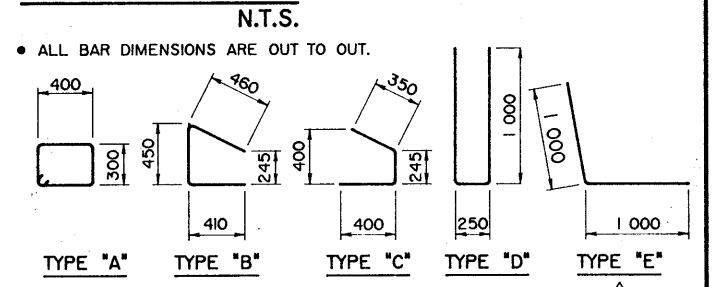
SECTION D
1:20



DETAIL A
1:20

BAR LIST					
MARK	SIZE	NO.	TYPE	LENGTH (mm)	MASS (kg)
A 1001	10		A	1 680	
A 1501	15		STR.		
C 1501	15		STR.	12 000	
C 1502	15		D	2 250	
S 1001	10		C	995	
S 1002	10		B	1 320	
S 1501	15		STR.		
S 1502	15		E	2 000	
				TOTAL	

BAR TYPES



MATERIALS REQUIRED

- 19mm x 254mm LONG ANCHOR BOLTS (GALVANIZED MACHINE BOLTS) c/w 2 NUTS.
- CLASS "B" CONCRETE (25MPa):
 - CONCRETE ARCH = m³
 - CONCRETE SHOULDERS = m³
 - CONCRETE CUT-OFF WALL = m³
 - TOTAL = m³

GENERAL NOTES FOR CONCRETE END TREATMENT

- DIMENSIONS ARE GIVEN IN MILLIMETRES UNLESS NOTED OTHERWISE.
- CAST-IN-PLACE CONCRETE SHALL BE IN ACCORDANCE WITH THE CURRENT VERSION OF B351 "CAST-IN-PLACE CONCRETE" SECTION 4 OF THE BRIDGE CONSTRUCTION SPECIFICATIONS.
- REINFORCING STEEL TO BE CONTINUOUS BETWEEN EACH SECTION, WELDING OF REINFORCEMENT IS NOT PERMITTED, REFER TO THE CURRENT VERSION OF B352 "REINFORCEMENT" SECTION 5 OF THE BRIDGE CONSTRUCTION SPECIFICATIONS FOR ADDITIONAL INFORMATION.
- REINFORCING STEEL AS NOTED IN THE BAR LIST IS CALLED UP BY THE FOLLOWING CONVENTION:
 - A - CONCRETE ARCH
 - C - CONCRETE CUT-OFF WALL
 - S - CONCRETE SHOULDER
- ALL REINFORCING BARS TO HAVE A MINIMUM OF 50mm COVER.
- ALL LAP SPLICES TO BE A MINIMUM OF 30 TIMES THE DIAMETER OF THE REBAR.
- HOLES IN THE S.P.C.S.P. PLATE (22mmØ) TO BE FIELD DRILLED TO RECEIVE ANCHOR BOLTS (DO NOT BURN).
- ALL CONCRETE SHALL BE CLASS "B", STRENGTH REQUIREMENT 25MPa AT 28 DAYS.
- AFTER PIPE HAS BEEN COMPLETELY BACKFILLED, CONCRETE SHOULDER TO BE POURED IN ONE CONTINUOUS POUR STARTING FROM THE CUT-OFF WALL.
- CONCRETE SHOULDERS AND CONCRETE ARCH TO BE GIVEN A BROOM FINISH AT RIGHT ANGLES TO THE EDGE OF THE S.P.C.S.P.; EXPOSED VERTICAL FACES TO BE GIVEN A CLASS I FINISH.
- CONCRETE COLLAR TO BE COVERED WITH A CURING MEMBRANE UPON COMPLETION OF POUR.
- FORMS ARE TO BE LEFT IN PLACE FOR A MINIMUM OF 24 HOURS FOLLOWING POUR.
- ALL OUTSIDE EDGES TO BE SHAPED WITH A CONCRETE EDGER.

SUPERSEDED
 5-1445-93
 93-12-02
 ① ②

DESIGNED		DRAWN		DATE		CHECKED		DATE		STREAM		LOCATION		HIGHWAY		FILE		SHEET		DRAWING	
J. O'B.		W. A. B.		MAY 01, 1986		J. G. R.		MAY 01, 1986										1 of 1		S-1444	

REV	DATE	DESCRIPTION	BY
91-05-15		GENERAL NOTES REVISED	C.T.C.
87-04-14		ADDITION OF S 1502 REINFORCING STEEL AND CHANGE TO SPECIFICATION NUMBERS	E.L.W.

REVISIONS		DATE	DESCRIPTION	BY
DESIGNED				
DRAWN				
DATE				
CHECKED				
DATE				
STREAM				
LOCATION				
HIGHWAY				
FILE				
SHEET				
DRAWING				