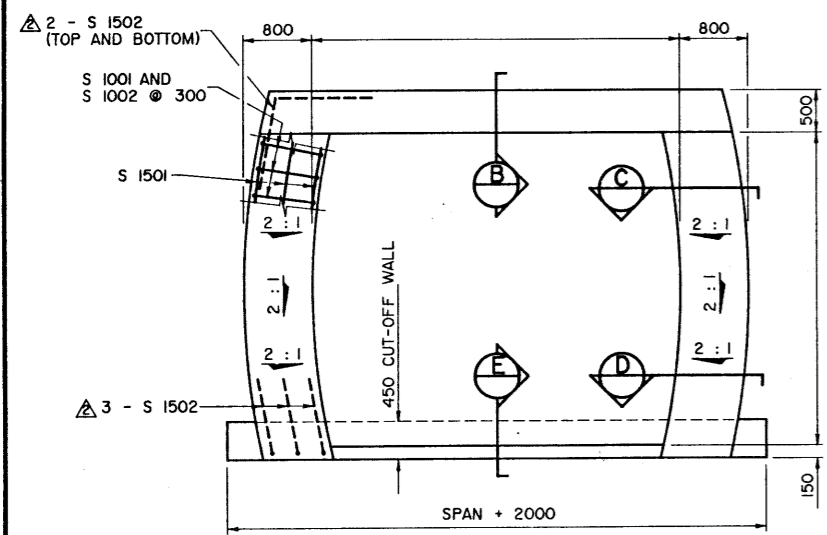
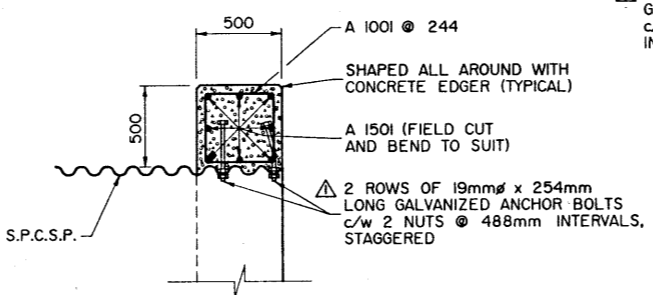


LONGITUDINAL END SECTION
N.T.S.

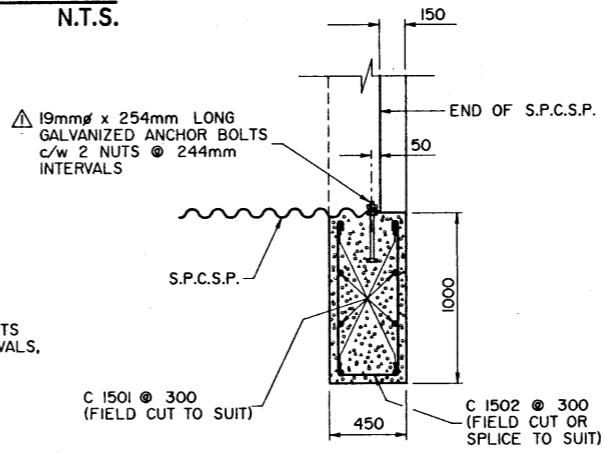
SECTION - END VIEW
N.T.S.



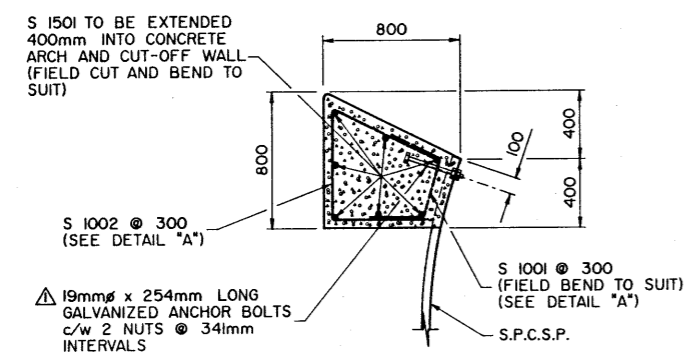
VIEW OF CONCRETE COLLAR
N.T.S.



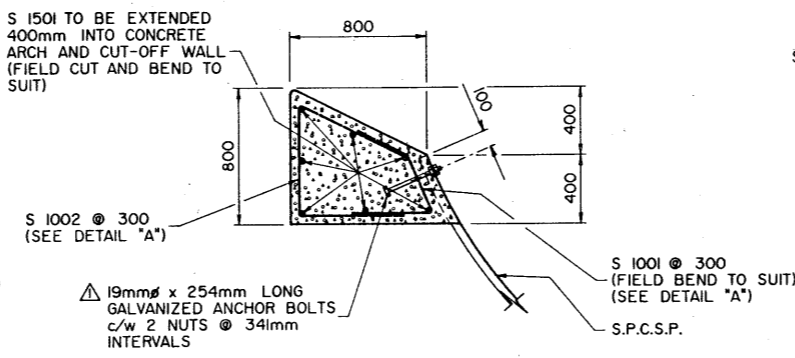
SECTION B
1:20



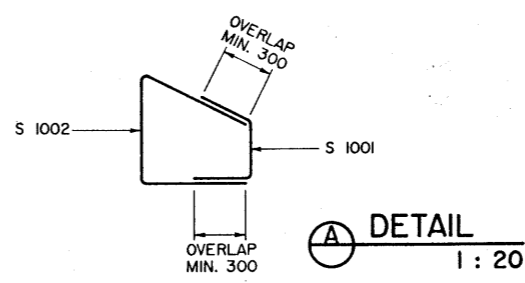
SECTION E
1:20



SECTION C
1:20

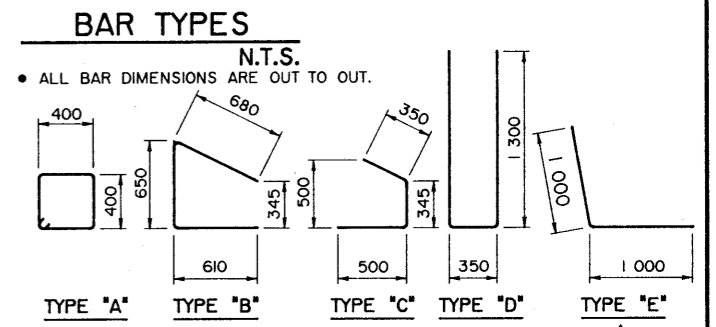


SECTION D
1:20



DETAIL A
1:20

BAR LIST					
MARK	SIZE	NO.	TYPE	LENGTH (mm)	MASS (kg)
A 1001	10		A	1 880	
A 1501	15		STR.		
C 1501	15		STR.	12 000	
C 1502	15		D	2 950	
S 1001	10		C	1 195	
S 1002	10		B	1940	
S 1501	15		STR.		
S 1502	15		E	2 000	
				TOTAL	



MATERIALS REQUIRED	
19mm x 254mm LONG ANCHOR BOLTS (GALVANIZED MACHINE BOLTS) c/w 2 NUTS.	
CLASS "B" CONCRETE (25MPa):	
CONCRETE ARCH	m ³
CONCRETE SHOULDERS	m ³
CONCRETE CUT-OFF WALL	m ³
TOTAL	m ³

- GENERAL NOTES FOR CONCRETE END TREATMENT**
- DIMENSIONS ARE GIVEN IN MILLIMETRES UNLESS NOTED OTHERWISE.
 - CAST-IN-PLACE CONCRETE SHALL BE IN ACCORDANCE WITH THE CURRENT VERSION OF B352 "CAST-IN-PLACE CONCRETE" SECTION 4 OF THE BRIDGE CONSTRUCTION SPECIFICATIONS.
 - REINFORCING STEEL TO BE CONTINUOUS BETWEEN EACH SECTION, WELDING OF REINFORCEMENT IS NOT PERMITTED. REFER TO THE CURRENT VERSION OF B352 "REINFORCEMENT" SECTION 5 OF THE BRIDGE CONSTRUCTION SPECIFICATIONS FOR ADDITIONAL INFORMATION.
 - REINFORCING STEEL AS NOTED IN THE BAR LIST IS CALLED UP BY THE FOLLOWING CONVENTION:
A - CONCRETE ARCH
C - CONCRETE CUT-OFF WALL
S - CONCRETE SHOULDER
 - ALL REINFORCING BARS TO HAVE A MINIMUM OF 50mm COVER.
 - ALL LAP SPLICES TO BE A MINIMUM OF 30 TIMES THE DIAMETER OF THE REBAR.
 - Holes in the S.P.C.S.P. plate (22mmØ) to be field drilled to receive anchor bolts (DO NOT BURN).
 - ALL CONCRETE SHALL BE CLASS "B", STRENGTH REQUIREMENT 25MPa AT 28 DAYS.
 - AFTER PIPE HAS BEEN COMPLETELY BACKFILLED, CONCRETE SHOULD TO BE POURED IN ONE CONTINUOUS POUR STARTING FROM THE CUT-OFF WALL.
 - CONCRETE SHOULDERS AND CONCRETE ARCH TO BE GIVEN A BROOM FINISH AT RIGHT ANGLES TO THE EDGE OF THE S.P.C.S.P.; EXPOSED VERTICAL FACES TO BE GIVEN A CLASS 1 FINISH.
 - CONCRETE COLLAR TO BE COVERED WITH A CURING MEMBRANE UPON COMPLETION OF POUR.
 - FORMS ARE TO BE LEFT IN PLACE FOR A MINIMUM OF 24 HOURS FOLLOWING POUR.
 - ALL OUTSIDE EDGES TO BE SHAPED WITH A CONCRETE EDGER.

SUPERSEDED

BYS-1444-93
S-1445-93
93-12-02

① ②

REVISIONS			APPROVED		Albarta TRANSPORTATION BRIDGE ENGINEERING BRANCH	
REV	DATE	DESCRIPTION	BY	DATE	CONCRETE END TREATMENT FOR STEEL PIPES FROM 4920mm DIA. TO 6160mm DIA.	
91-05-15		GENERAL NOTES REVISED	C.T.C.			
87-04-14		ADDITION OF S 1502 REINFORCING STEEL AND CHANGE TO SPECIFICATION NUMBERS	E L W			
86-08-15		ANCHOR BOLT LENGTH	E L W			
DESIGNED J. O'B. J. A. E.			DRAWN W. A. B.	DATE MAY 01, 1986	CHECKED J. G. R.	DATE MAY 01, 1986
STREAM			LOCATION	HIGHWAY	FILE	SHEET 1 of 1
DRAWING S-1445						