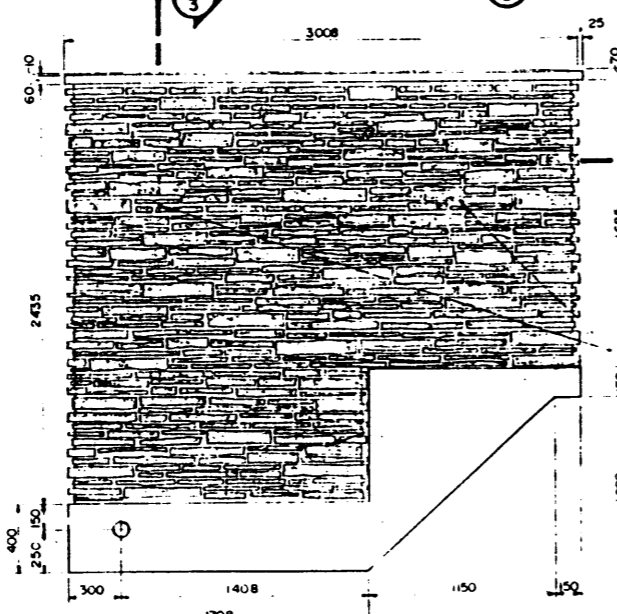
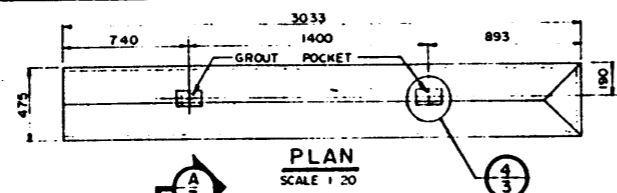
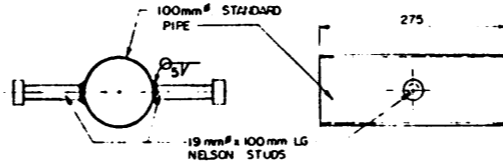


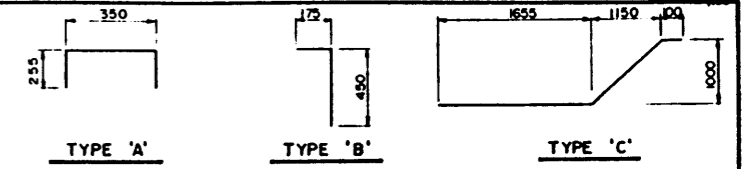
**A SECTION**  
SCALE 1:20  
**ELEVATION**  
SCALE 1:20



**ELEVATION**  
SCALE 1:20



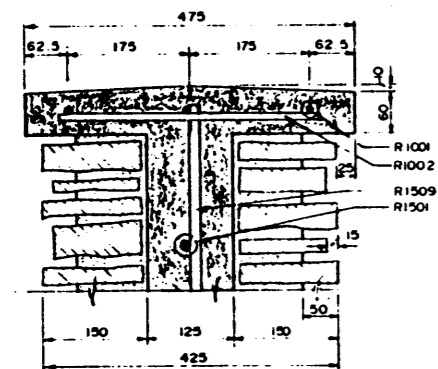
**2 DETAIL**  
SCALE 1:5



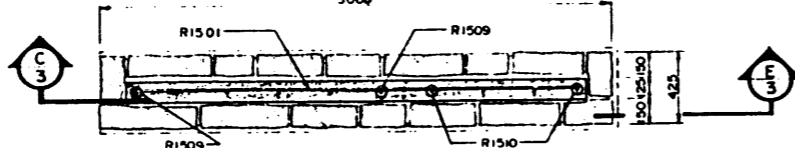
**BAR TYPES** (ALL BAR DIMENSIONS ARE OUT TO OUT)

BAR LIST: 4 PRECAST WINGWALL PANELS

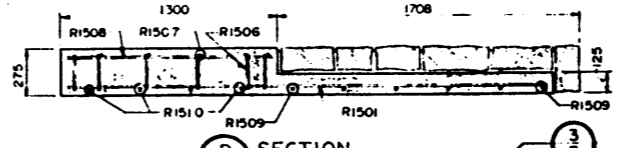
MARK	SIZE	No.	TYPE	X	Y	LENGTH	MASS	REMARKS	
R 1001	10M	12	STR			2930	28		
R 1002	10M	40	STR			370	12		
R 1501	15M	24	STR			2600	98		
R 1502	15M	16	STR			WIRES	53	4-2430, 4-2100, 4-1920	
R 1503	15M	8	C			3279	41		
R 1504	15M	8	STR			WIRES	10	4-600, 4-950	
R 1505	15M	32	STR			300	15		
R 1506	15M	96	STR			225	34		
R 1507	15M	20	STR			WIRES	22	4-265, 4-520, 4-785, 4-925	
R 1508	15M	4	STR			1200	8		
R 1509	15M	24	STR			2800	106		
R 1510	15M	16	STR			WIRES	55	4-785, 4-925	
R 1511	15M	88	A			860	119		
R 1512	15M	32	B			625	31		
TOTAL							lbs.	632	



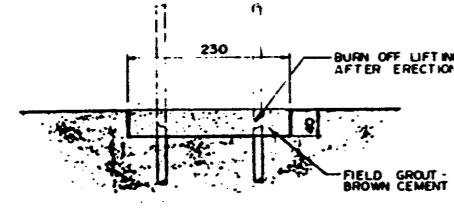
**1 DETAIL**  
SCALE 1:5



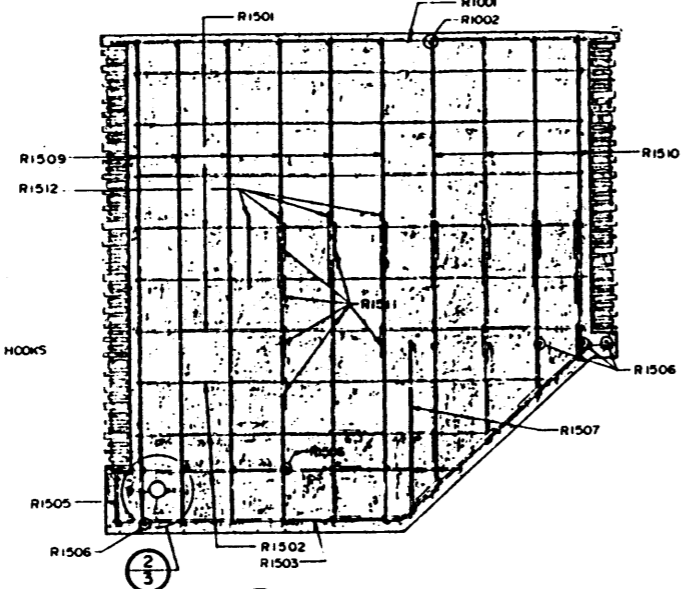
**B SECTION**  
SCALE 1:20



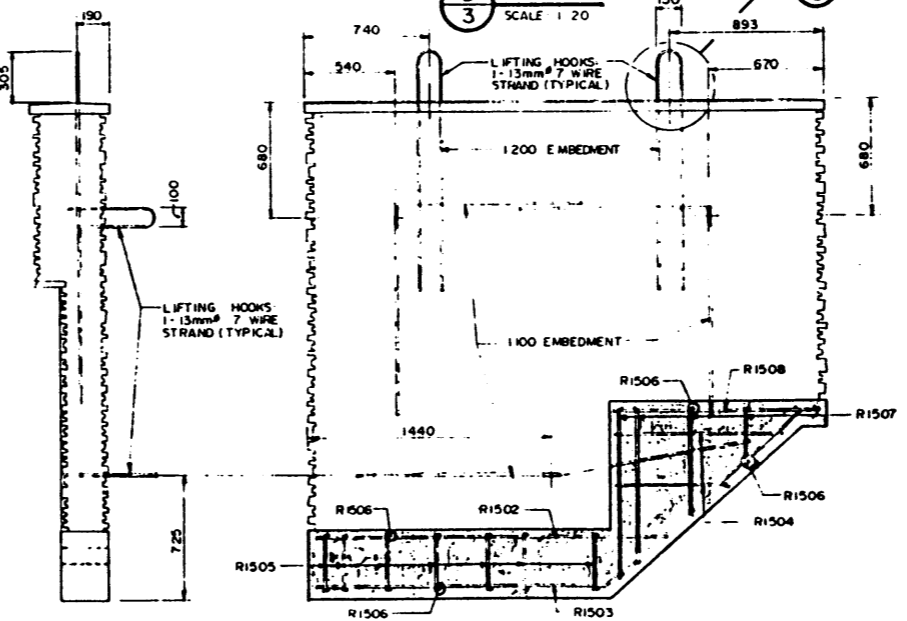
**D SECTION**  
SCALE 1:20



**3 DETAIL - GROUT POCKET**  
SCALE 1:5



**C SECTION**  
SCALE 1:20



**E SECTION/LIFTING HOOKS**  
SCALE 1:20

**SUGGESTED ERECTION PROCEDURE FOR PRECAST WINGWALL PANEL**

- POUR ABUTMENT SEAT, INCLUDING PANEL CORBEL.
- PLACE BEARINGS AND ERECT GRIDERS.
- ERECT PRECAST WINGWALL PANELS ON PANEL CORBEL POSITION WITH SHIMS AND SECURE BOLT SUPPORT DURING ERECTION.
- PLACE WINGWALL REINFORCEMENT, BACKFILL AS REQUIRED, POUR WINGWALL AND SIDEWALKS.
- REMOVE LIFTING HOOKS FROM PRECAST PANEL AND PLACE GROUT.

NOTE:  
PRECAST WINGWALL PANELS TO BE FABRICATED TO SUIT GRADIENT TOP TO MATCH GRADE. ENDS TO BE PERPENDICULAR TO GRADE.

- GENERAL NOTES:**
- ALL REINFORCING STEEL SHALL HAVE 50mm CLEAR COVER UNLESS OTHERWISE NOTED.
  - ALL EXPOSED CORNERS TO HAVE 20mm CHAMFER OR FILLET UNLESS OTHERWISE NOTED.
  - "RUNDLE STONE" ON EXTERIOR FACE OF PANEL TO BE OFFSET UP TO 15mm TO GIVE A VARIOUS SURFACE. MAXIMUM THICKNESS OF PANEL IS 425mm.
  - REINFORCING BARS MAY BE SHIFTED WHERE REQUIRED TO CLEAR "RUNDLE STONE" AS APPROVED BY THE ENGINEER. DEPTH OF REINFORCING BARS MAY NOT VARY.
  - ALL REINFORCING STEEL TO BE C S A G30 12M-400.
  - CONCRETE TO BE MADE WITH BROWN CEMENT.
  - 28 DAY CONCRETE STRENGTH 25MPa.

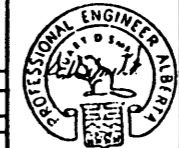
**4 PARTIAL PLAN - GROUT POCKET**  
SCALE 1:5

THE ASSOCIATION OF PROFESSIONAL ENGINEERS OF ALBERTA  
PERMIT NUMBER P 220  
BOLTER PARISH TRIMBLE LTD.

NO.	DATE	DESCRIPTION	BY

**Bolter Parish Trimble Ltd.**  
CONSULTING ENGINEERS

DATE	DPT. DWG.	DWN. BY	LOCATION
DEC. 1980	109-6-41	D.K.H.	
		DES'D. BY	HWY.
		REB.	



ALBERTA TRANSPORTATION  
BRIDGE AND STRUCTURAL ENGINEERING BRANCH

KANANASKIS COUNTRY BRIDGES

PRECAST WINGWALL PANEL-MAJOR BRIDGES

SHT. NO. OF  
FILE NO.  
HWY. STA.  
DWG. NO.  
5-1466