

GENERAL NOTES

ALL DIMENSIONS ARE IN mm UNLESS NOTED OTHERWISE.

HANDRAIL:

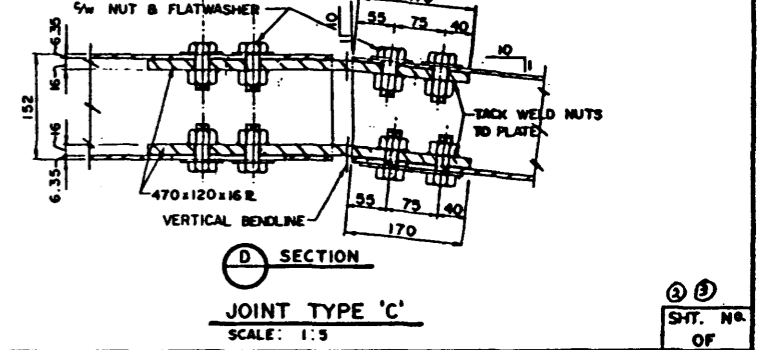
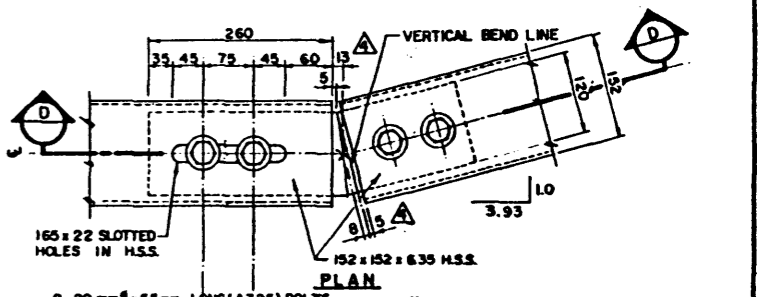
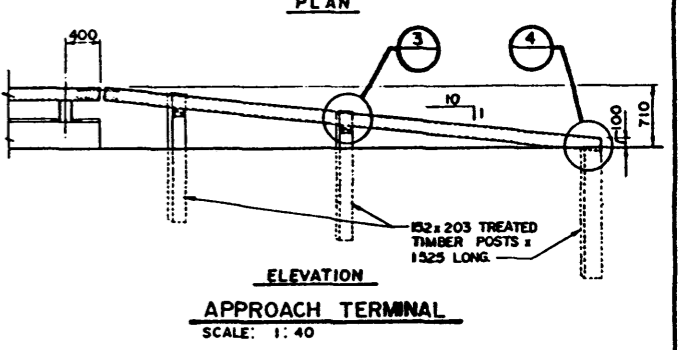
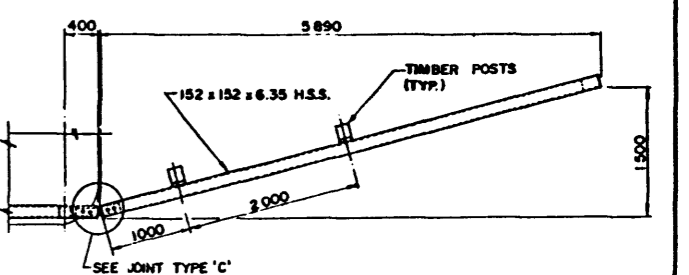
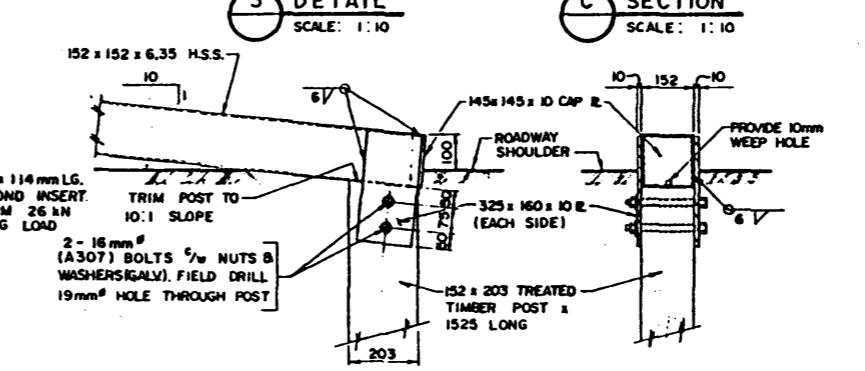
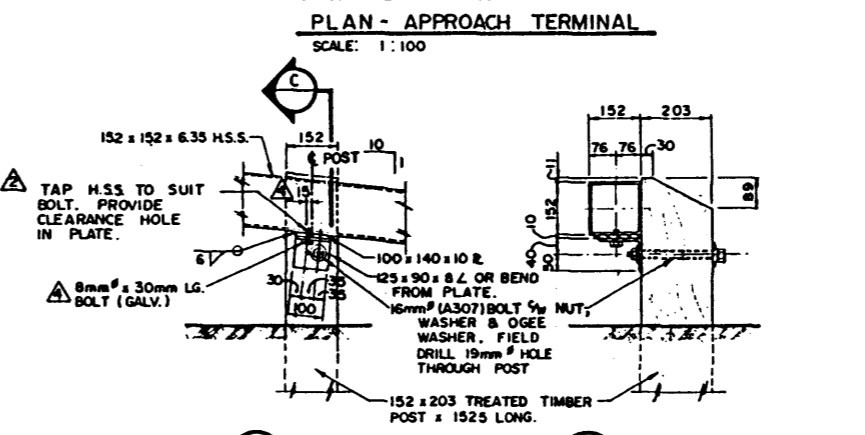
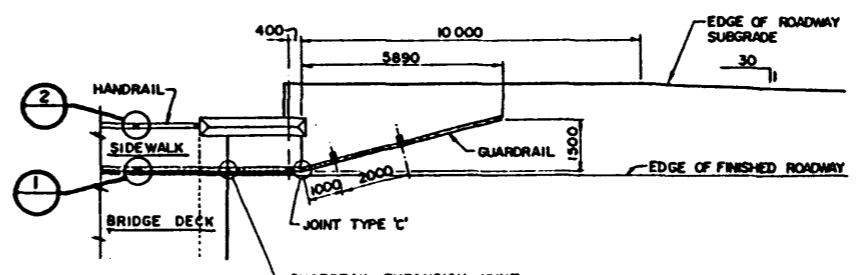
- ALL WOOD FOR THE HANDRAIL SHALL BE LAMINATED GRADE C INDUSTRIAL CLEAR WESTERN RED CEDAR, FINISHED ON ALL SIDES. NO GRADE D ALLOWED.
- BEVELLED CLEATS AND TOP RAIL SHALL BE FABRICATED IN AN APPROVED WOODWORKING PLANT.
- BOLT HOLES IN HANDRAIL POSTS SHALL BE FIELD DRILLED.
- BOLTS FOR HANDRAIL SHALL CONFORM TO ASTM A307, SHALL BE GALVANIZED, AND NUTS AND WASHERS SHALL MATCH.
- HANDRAIL POSTS SHALL BE VERTICAL UNLESS NOTED OTHERWISE. SHIM AS REQUIRED FOR TOP RAIL.
- ALL WOOD SHALL BE GIVEN TWO COATS OF AN APPROVED PROTECTIVE STAIN PRIOR TO ASSEMBLY.

GUARDRAIL:

- FABRICATION OF GUARDRAIL SHALL CONFORM TO THE CURRENT BRIDGE BRANCH SPECIFICATION FOR THE SUPPLY OF BRIDGE RAIL. (SPECIFICATION NO B-312M).
- SUPPLY OF GUARDRAIL FOR BRIDGE SHALL INCLUDE APPROACHES AT FOUR CORNERS.
- GUARDRAIL SHALL BE CONTINUOUS FOR A MINIMUM OF TWO PANEL LENGTHS.

GUARDRAIL CONT:

- STRUCTURAL STEEL SHALL CONFORM TO CSA G40.21M - 350 A.
- BOLTS SHALL CONFORM TO ASTM A307 OR A325 TYPE 3 AS SHOWN ON GUARDRAIL; NUTS AND WASHERS SHALL MATCH.
- WELDING SHALL CONFORM TO AWS D1.1.
- GALVANIZING SHALL CONFORM TO ASTM A123 OR A153 AS APPLICABLE.
- FABRICATE SPLICE SLEEVES 6mm THICK BY 400mm LONG TO FIT INSIDE AN HSS 152 x 152 x 6.35 WITH 1mm CLEARANCE ALL AROUND.



SHT. NO. OF FILE NO. HWY. STA. DWG. NO. S-1468-82



THE ASSOCIATION OF PROFESSIONAL ENGINEERS OF ALBERTA PERMIT NUMBER P 220 BOLTER PARISH TRIMBLE LTD.

| NO. | DATE | DESCRIPTION | BY |
|-----|----------------|---|--------|
| | 87-04-22 | A.B. JOINT TYPE 'C' & C2 DETAIL REVISED | TJM |
| | 87-03-18 | HANDRAIL REDRAWN, END DETAIL ADDED, NOTES REWRITTEN, GROUT POCKET & DRAIN HOLES ADDED | T.J.S. |
| | APRIL 15, 1983 | BOLT TYPE CHANGED, CLEARANCE HOLE ADDED | S.D.S. |
| | FEB. 11, 1982 | RE-DRAWN | S.D.S. |

| Bolter Parish Trimble Ltd. | | | |
|----------------------------|-------------|----------|----------|
| CONSULTING ENGINEERS | | | |
| DATE | B.R.T. DWR. | OWN. BY | LOCATION |
| FEB. 1982 | 109-6-60-82 | G.J.P. | HWY. |
| | | DESP. BY | S.D.S. |



ALBERTA TRANSPORTATION BRIDGE AND STRUCTURAL ENGINEERING BRANCH
KANANASKIS COUNTRY BRIDGES
RAILING DETAILS-MAJOR BRIDGES