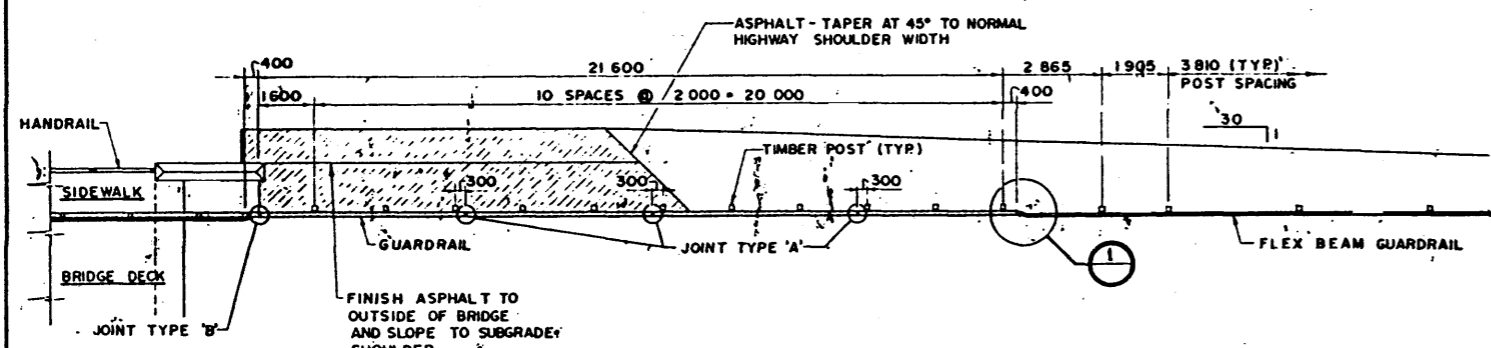
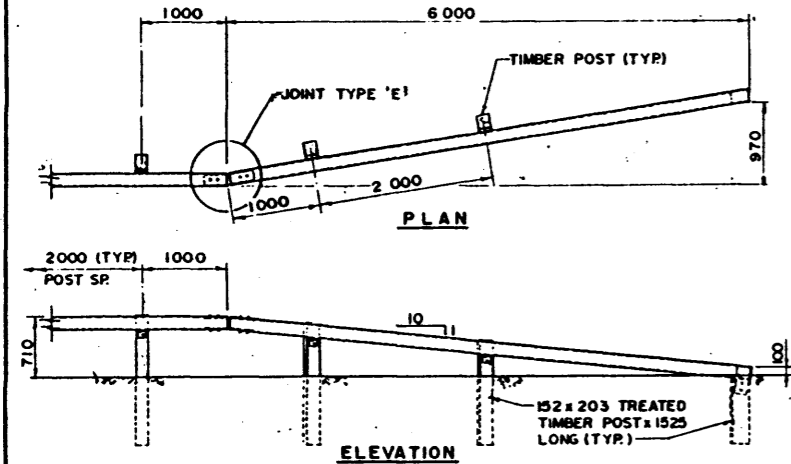


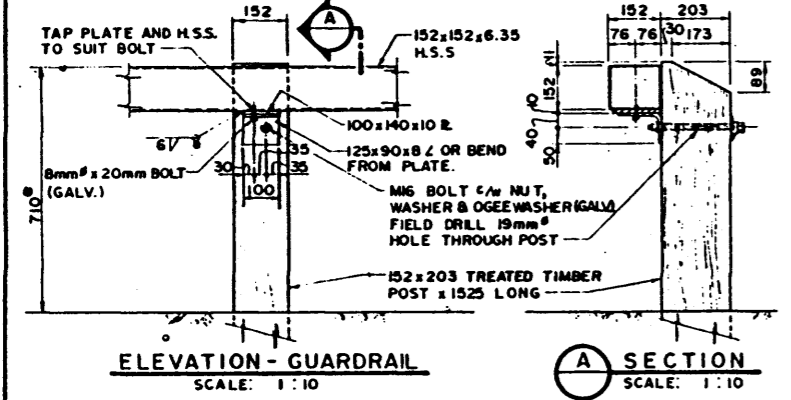
PLAN - 46m BOX BEAM GUARDRAIL
SCALE: 1:100



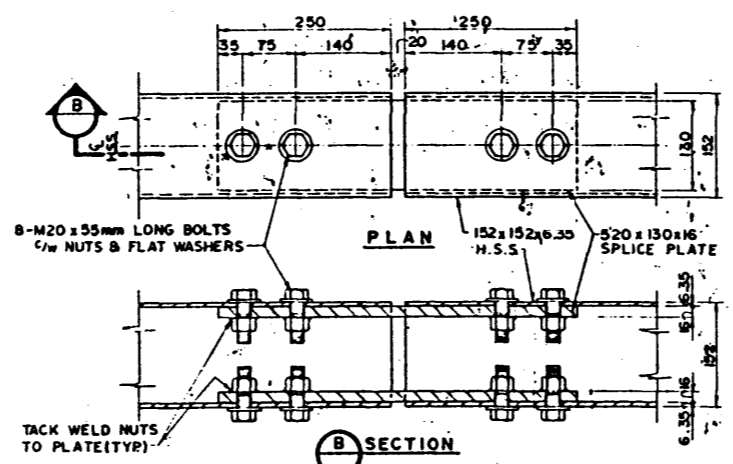
PLAN - 22m BOX BEAM GUARDRAIL TO FLEX BEAM GUARDRAIL
SCALE: 1:100



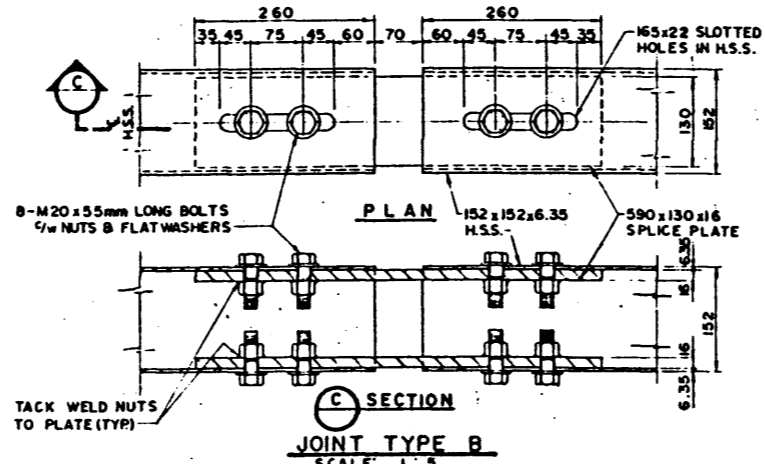
APPROACH TERMINAL
SCALE: 1:40



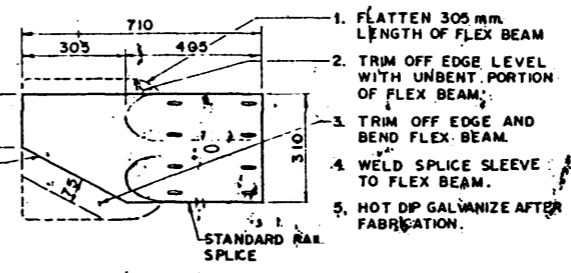
ELEVATION - GUARDRAIL
SCALE: 1:10



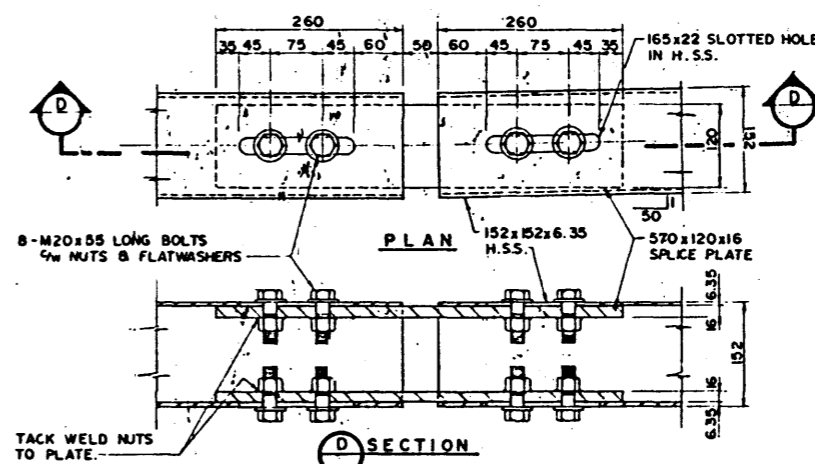
JOINT TYPE A
SCALE: 1:5



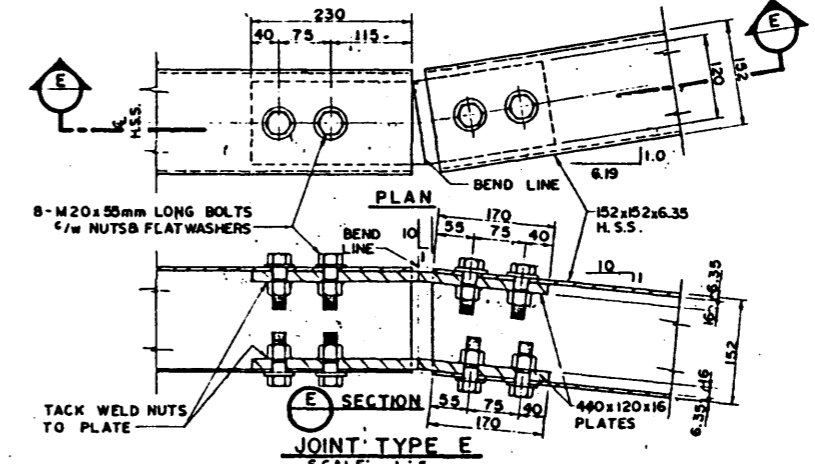
JOINT TYPE B
SCALE: 1:5



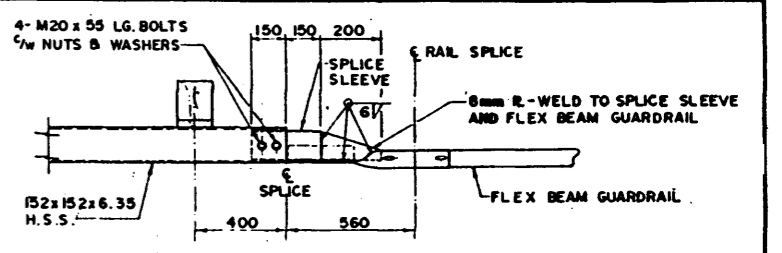
DETAIL - FLEX BEAM FABRICATION
SCALE: 1:10



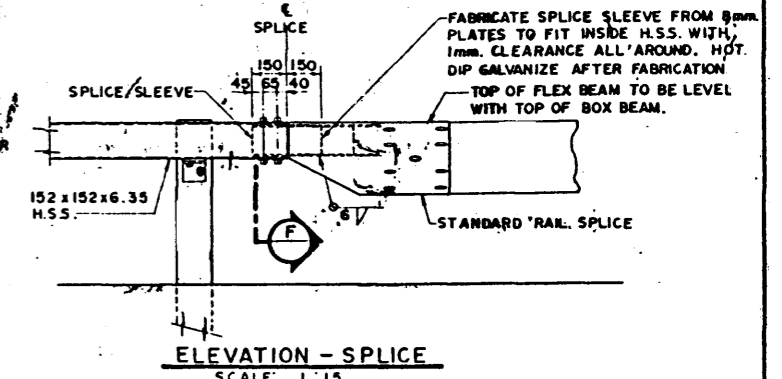
JOINT TYPE D
SCALE: 1:5



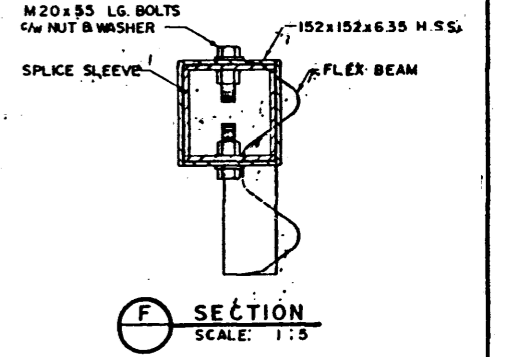
JOINT TYPE E
SCALE: 1:5



DETAIL - SPICE
SCALE: 1:15



ELEVATION - SPICE
SCALE: 1:15



SECTION
SCALE: 1:5

- NOTES:**
- STEEL RAIL ON BRIDGE APPROACHES TO BE C.S.A. G40.21M-350 A.
 - BOLTS TO BE A.S.T.M. A325-TYPE 3 3/4 NUTS & WASHERS TO MATCH.
 - GUARDRAIL TO BE CONTINUOUS FOR A MINIMUM OF 3 PANEL LENGTHS.
 - JOINT SPlice PLATES TO BE C.S.A. G40.21M-350 A.
 - FLEX BEAM SPlice PLATES TO BE C.S.A. G40.21M-300W.
 - WELDING TO CONFORM TO A.W.S. D1.
 - STEEL ANGLES TO BE C.S.A. G40.21-350 A OR BEND FROM PLATE TO C.S.A. G40.21-350A.
 - FABRICATION SHALL CONFORM TO THE CURRENT BRIDGE BRANCH SPECIFICATION FOR SUPPLY OF BRIDGERAIL. (SPECIFICATION NO. B-312M)

THE ASSOCIATION OF PROFESSIONAL ENGINEERS OF ALBERTA
PERMIT NUMBER P 220
BOLTER PARISH TRIMBLE LTD.



Bolter Parish Trimble Ltd.
CONSULTING ENGINEERS

DATE	B.R.T. FILE	DWN. BY	LOCATION
FEB, 1982	109-6-149	V.V.A. DES'D. BY	HWY.
		S.D.S.	



ALBERTA TRANSPORTATION
BRIDGE AND STRUCTURAL ENGINEERING BRANCH

KANANASKIS 'COUNTRY BRIDGES'

STANDARD APPROACH RAIL DETAILS

SHT. NO. OF	FILE NO.	HWY. STA.	DWG. NO.
1			S-1460