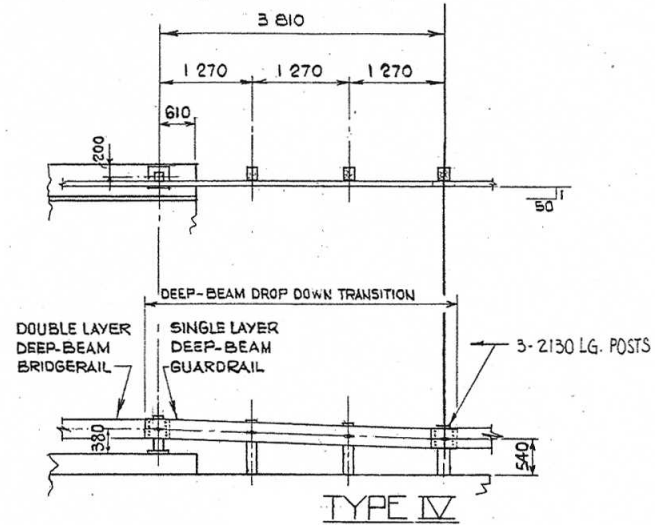
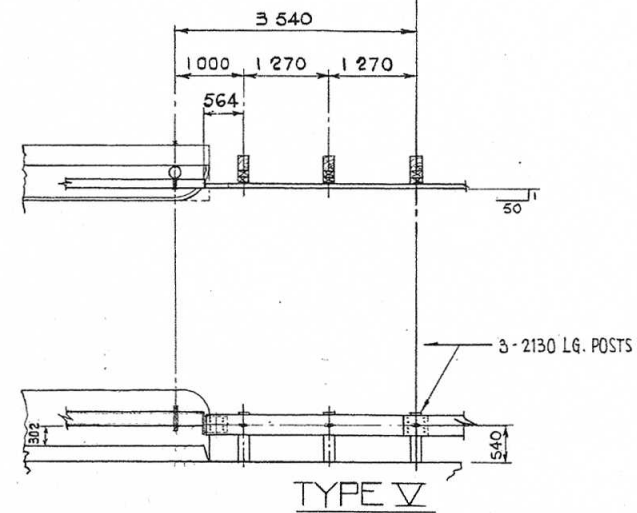


TYPE III
CONNECTION TO 700 mm
TUBE RAIL

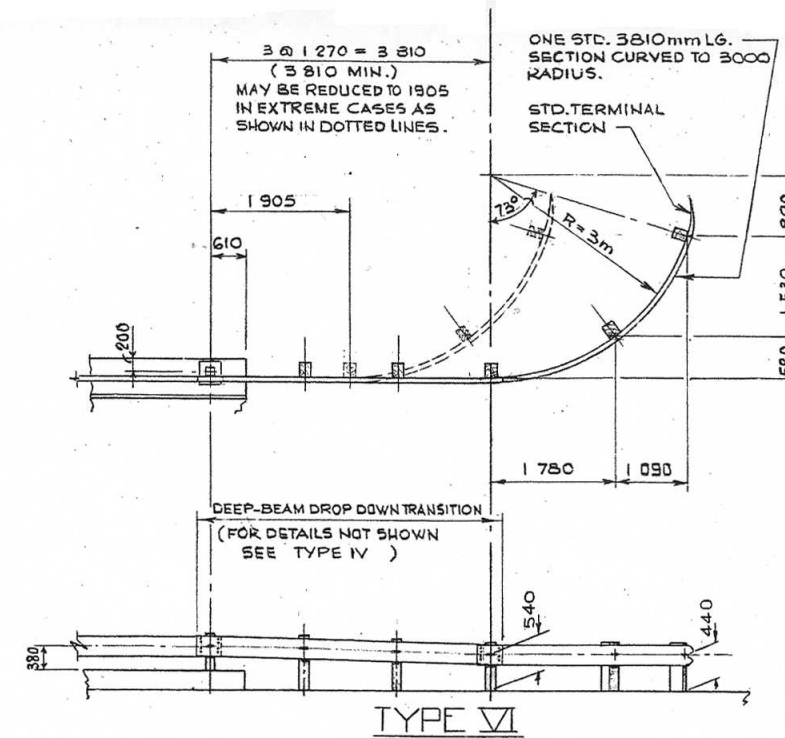
FOR DETAILS NOT SHOWN SEE DWG'S S-1402 (SM GIRDER BRIDGES) OR S-1600 (SC GIRDER BRIDGES)



TYPE IV
CONNECTION TO DEEP-BEAM
BRIDGERAIL



TYPE V
CONNECTION TO RETROFIT RAIL.
(FOR DETAILS NOT SHOWN SEE DWG.# S-1417)



TYPE VI
CONNECTION TO CANAL BANK
ACCESS ROAD LOCATION

GENERAL NOTES:

- DIMENSIONS ARE GIVEN IN mm UNLESS OTHERWISE NOTED.
- RAIL SECTIONS TO BE LAPPED IN DIRECTION OF TRAFFIC.
- POSTS ARE 1.52 m LONG EXCEPT AS NOTED.
- POSTS TO BE FIRMLY TAMPED INTO GROUND.
- WORK THIS DWG. IN CONJUNCTION WITH DWG'S-1471.

- LENGTH OF GUARDRAIL SHOWN ARE MINIMUMS. LENGTHS TO BE INCREASED AS REQUIRED BY ROADWAY AND TRAFFIC CONDITIONS.

ALL REFERENCES TO DEEP BEAM GUARDRAIL ON THE DRAWING ARE THE SAME AS W-BEAM GUARDRAIL IN THE SPECIFICATIONS.

SUPERSEDED

SUPERSEDED
BY S-1472 REV. 4 2004-11-29

DESIGNED		DRAWN BY		DATE		CHECKED BY		DATE		STREAM		LOCATION		HWY. NO.		SCALE		FILE NO.		SHEET		DRAWING	
J.C.Y.		P. SZ		84 01 25												1:50				2 2		S-1472	

APPROVED		Alberta TRANSPORTATION BRIDGE ENGINEERING BRANCH		METRIC	
94-10-31 GENERAL NOTES		LEA			
90-08-08 REF. TO S-1600 ADDED -TYPE III CONN.		W.P.			
84-06-20 REVISED FROM S-1403		J.C.Y.			
DATE		DESCRIPTION		DATE	
JUNE 19/84					