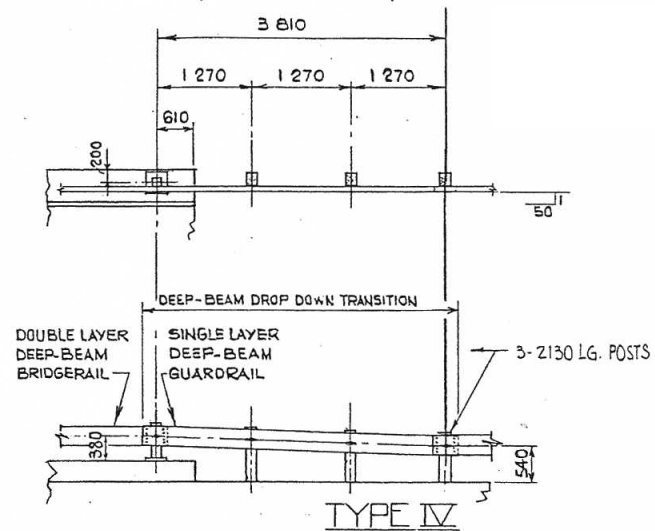
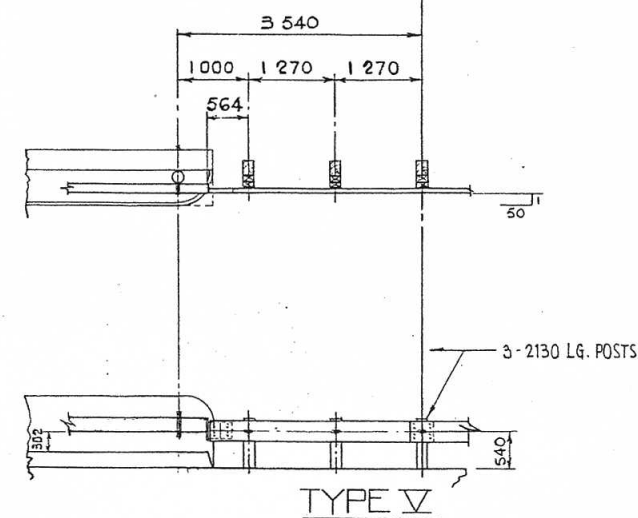


CONNECTION TO 700 mm TUBE RAIL

FOR DETAILS NOT SHOWN SEE DWG. # S-1402 (SM GIRDER BRIDGES) OR S-1600 (SC GIRDER BRIDGES)

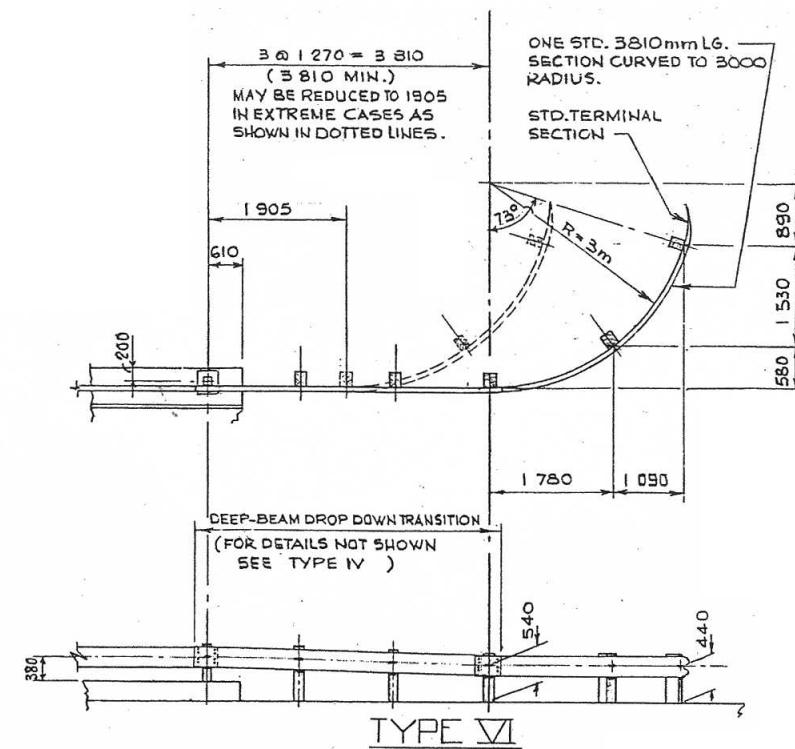


CONNECTION TO DEEP-BEAM BRIDGERAIL



CONNECTION TO RETROFIT RAIL

(FOR DETAILS NOT SHOWN SEE DWG. # S-1417)



CONNECTION TO CANAL BANK ACCESS ROAD LOCATION

GENERAL NOTES:

- DIMENSIONS ARE GIVEN IN mm UNLESS OTHERWISE NOTED.
- RAIL SECTIONS TO BE LAPPED IN DIRECTION OF TRAFFIC.
- POSTS ARE 1.52 m LONG EXCEPT AS NOTED.
- POSTS TO BE FIRMLY TAMPED INTO GROUND.
- WORK THIS DWG. IN CONJUNCTION WITH DWG. # S-1471.

LENGTH OF GUARDRAIL SHOWN ARE MINIMUMS. LENGTHS TO BE INCREASED AS REQUIRED BY ROADWAY AND TRAFFIC CONDITIONS.

ALL REFERENCES TO DEEP BEAM GUARDRAIL ON THE DRAWING ARE THE SAME AS W-BEAM GUARDRAIL IN THE SPECIFICATIONS.

THE USE OF THESE DRAWINGS SHALL BE LIMITED TO MAINTENANCE WORK OF APPROACH GUARDRAILS FOR EXISTING BRIDGES, WHICH HAVE BEEN DETERMINED TO REQUIRE NO UP-GRADING IN ACCORDANCE WITH THE "BRIDGE STRUCTURES DESIGN CRITERIA, APPENDIX D - GUIDELINES FOR UPGRADING OF EXISTING BRIDGERAILS/APPROACH RAIL TRANSITION IN ALBERTA". THESE DRAWINGS SHALL NOT BE USED FOR NEW BRIDGE CONSTRUCTION OR BRIDGERAIL REPLACEMENT PROJECTS.

DESIGNED		DRAWN BY		DATE		CHECKED BY		DATE		STREAM		LOCATION		HWY. NO.		SCALE		FILE NO.		SHEET		DRAWING	
J.C.Y.		P. SZ		84 01 25												1:50		2 2		S-1472			

APPROVED		DATE	
<i>J. C. Y.</i>		JUNE 19 1984	
EXECUTIVE DIRECTOR		BRIDGE ENGINEERING	

REVISIONS	
NO.	DATE
1	04-11-29
2	94-10-31
3	90-08-08
4	84-06-20
DESCRIPTION	
NOTE ADDED	
GENERAL NOTES	
REF. TO S-1600 ADDED - TYPE III CONN.	
REVISED FROM S-1402	
BY	
RY	
LEA	
W.P.	
J.C.Y.	

Alberta TRANSPORTATION BRIDGE ENGINEERING BRANCH METRIC
 DEEP BEAM GUARDRAIL AT BRIDGE APPROACHES
 SHEET 2

