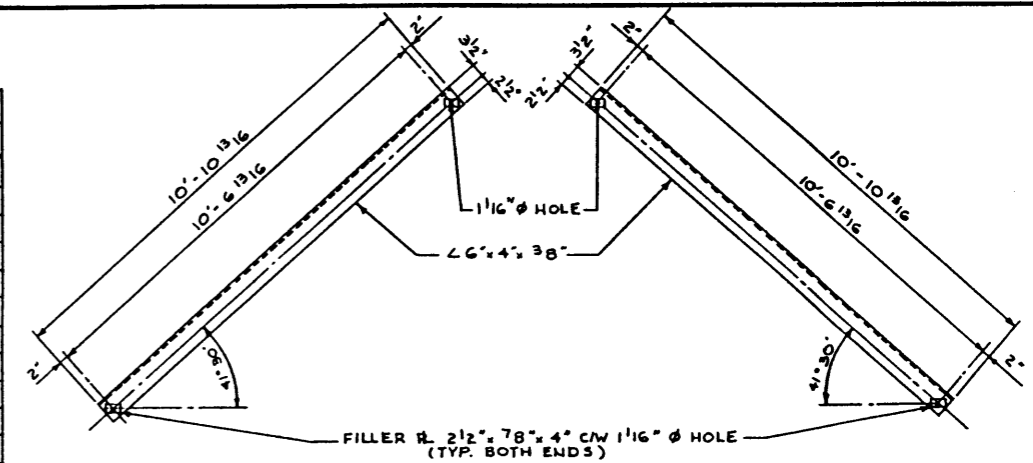


MATERIAL LIST (90' BAILEY BRIDGE)			
QUANTITY	IDENT. NO.	WEIGHT	DESCRIPTION
126	BB1	73 080	BAILEY PANEL
224	BB150	45 696	CHORD REINFORCEMENT
532	BB4	3 192	PANEL PIN
448	BB9	3 584	CHORD BOLT
448	BB151	672	CHORD BOLT COLLAR
248	BB11	248	BRACING BOLT
28	BB29	84	TIE PLATE
96	BB3	1 728	RAKER
6	TR ₁	3 505	LONG TRANSOM
24	TR ₃	3 480	INTERMEDIATE TRANSOM
35	TR ₂	1 111	SHORT TRANSOM
202	BB6	1 212	TRANSOM CLAMP
14	BB19	980	BEARING
14	BB62	1 820	MALE END POST
14	BB63	2 044	FEMALE END POST
6	TU	2 324	3" x 5" HSS TUBE
9	∠	1 253	6" x 4" x 3/8" CROSS BRACE ANGLE (L.H.F.)
9	∠	1 253	6" x 4" x 3/8" CROSS BRACE ANGLE (R.H.F.)
36	BOLT	252	1" φ x 9" LG. A 325 BOLT

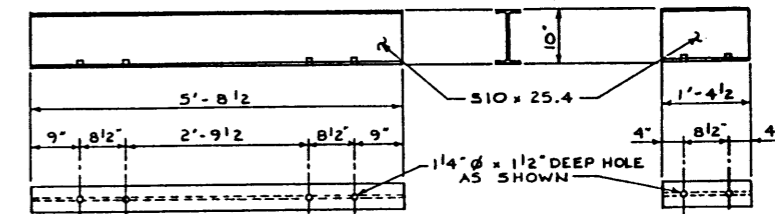
TOTAL WEIGHT : 147 518 lbs.

MATERIAL LIST (TIMBER & MISCELLANEOUS)		
QUANTITY	WEIGHT	DESCRIPTION
45	67 140	8" x 20" x 28'-0 LG. TREATED TIMBER SUB DECK
2250 LIN. FT.	20 250	3" STRIP DECK
2	2 880	12" x 12" x 30'-0 LG. TREATED TIMBER CAP
2	2 304	12" x 12" x 24'-0 LG. " " "
2	288	4" x 6" x 18'-0 LG. TREATED TIMBER NAILING CLEAT
19	14 220	12" φ x 30'-0 LG. UNTREATED TIMBER PILING.
950 LIN. FT.	11 400	3" TREATED TIMBER BACKWALL SHEETING
188 LIN. FT.	9 024	12" x 12" TREATED TIMBER WHEEL GUARD
6	11 400	PRE-FABRICATED H-PILE GUARDRAIL (30'-0 LG.)
120	720	3/4" φ x 10" LG. H-PILE GUARDRAIL BOLTS
70	1050	3/4" φ x 24" LG. THREADED ROD C/W 2-OGEE WASHERS & 2 NUTS
180	450	STD. TIMBER CLIPS C/W LAG SCREWS
14	630	12" x 17" x 3/4" BEARING PL.
26	130	3/4" φ x 28" LG DRIFTS
3	150	BOX 6" ARDOX NAILS

TOTAL WEIGHT : 142 036 lb.

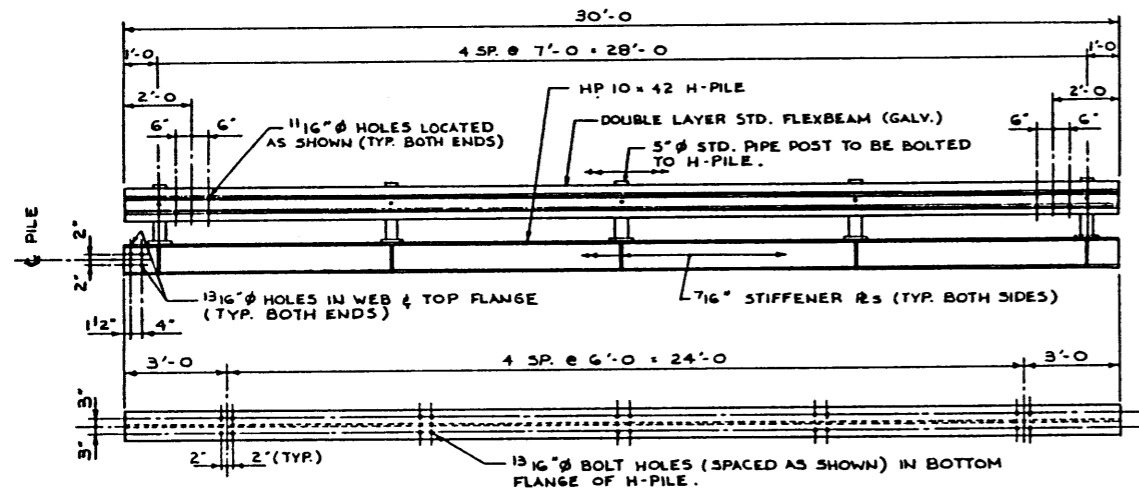


CROSS BRACE ANGLES
9 REQ'D. OF EACH 1/2" = 1'-0"

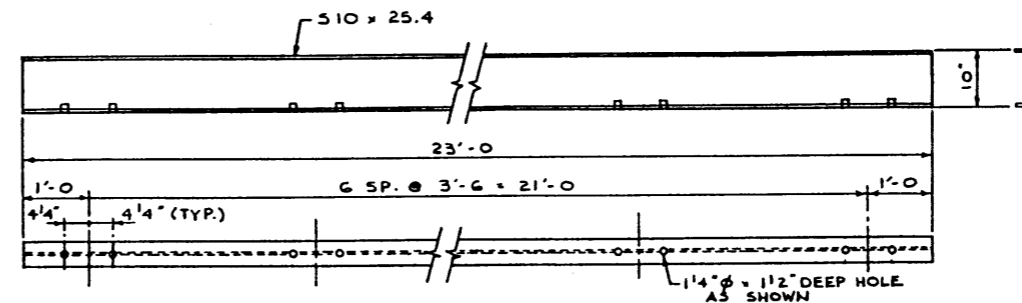


INTERMEDIATE TRANSOM (TR₃)
24 REQ'D. 3/4" = 1'-0"

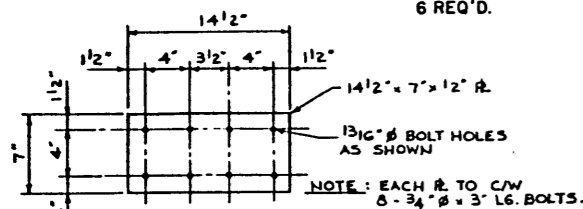
SHORT TRANSOM (TR₂)
35 REQ'D. 3/4" = 1'-0"



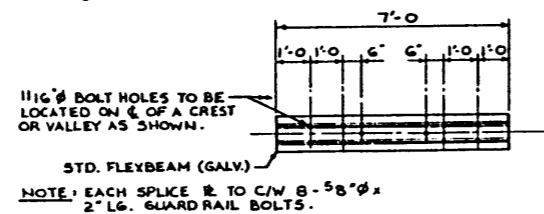
H-PILE GUARDRAIL
6 REQ'D. 3/8" = 1'-0"



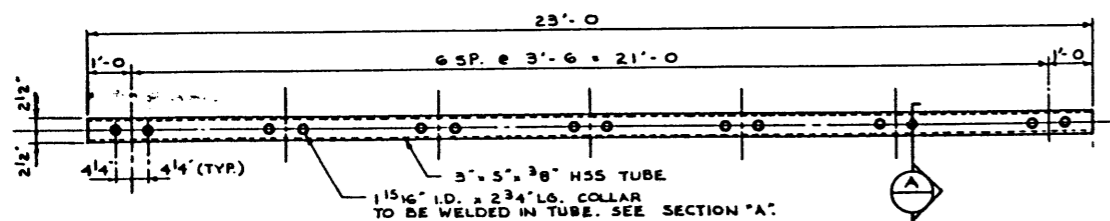
LONG TRANSOM (TR₁)
6 REQ'D. 3/4" = 1'-0"



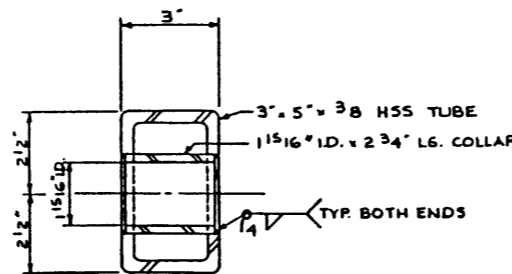
H-PILE SPLICE PL.
8 REQ'D. 1 1/2" = 1'-0"



GUARDRAIL SPLICE
4 REQ'D. 3/8" = 1'-0"



TUBE BRACE (TU)
6 REQ'D. 1 1/2" = 1'-0"



SECTION A
3/8" = 1"

GENERAL NOTES

1. ABUTMENT TIMBER BEARING PILES SHALL BE DRIVEN TO A MINIMUM BEARING CAPACITY OF 20 TON AND MINIMUM PENETRATION DEPTH OF 15 FEET.
2. ABUTMENT BACKWALL AND WINGWALL PILES SHALL BE DRIVEN TO A MINIMUM BEARING CAPACITY OF 15 TON AND MINIMUM PENETRATION DEPTH OF 10 FEET.
3. ALL TIMBER MATERIAL INCLUDING PILES COULD BE TREATED OR UNTREATED.
4. GENERAL DETOUR ALIGNMENT DETAILS WILL BE PROVIDED BY THE DISTRICT OR BY OTHERS.
5. DETOUR BRIDGE IS DESIGNED FOR HS 25 LOADING.

APPROVED		Albera TRANSPORTATION REGIONAL TRANSPORTATION	
EXECUTIVE DIRECTOR FOR BRIDGE ENGINEERING		90' DECK BAILEY BRIDGE MATERIAL LIST & DETAILS	
DATE: Feb 21, 1990		SHEET 2 of 2 DRAWING S-1490	
REV	DATE	DESCRIPTION	BY
REVISIONS			
DESIGNED	DRAWN	DATE	CHECKED
C.W. J.M.	D.B.C.	90-02-08	