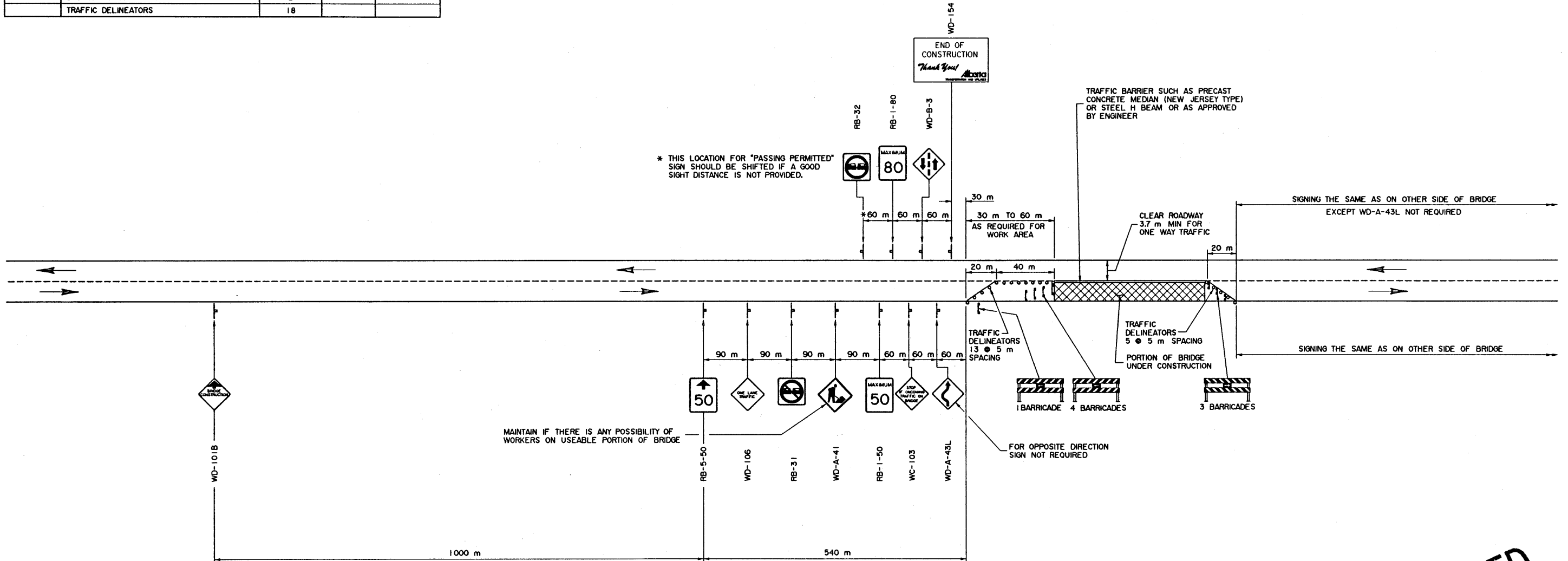


SIGNING MATERIALS LIST

SIGN NO.	MESSAGE OR DESCRIPTION	TOTAL NO. REQ'D FROM DRAWING	NUMBER ON HAND	ADDITIONAL SIGNS REQUIRED
RB-1-50	MAXIMUM SPEED 50	2		
RB-1-80	MAXIMUM SPEED 80	2		
RB-5-50	MAXIMUM SPEED AHEAD 50	2		
RB-31	DO NOT PASS	2		
RB-32	PASSING PERMITTED	2		
WC-103	STOP IF ONCOMING TRAFFIC ON BRIDGE	2		
WD-A-41	ROAD WORK	2		
WD-A-43L	ROADSIDE DIVERSION LEFT	1		
WD-B-3	TWO WAY TRAFFIC AHEAD	2		
WD-101B	BRIDGE CONSTRUCTION AHEAD	2		
WD-106	ONE LANE TRAFFIC	2		
WD-116	BARRICADE STANDS	16		
WD-116-1L	BARRICADE LEFT	10		
WD-116-1R	BARRICADE RIGHT	6		
WD-116-5	BARRICADE ARROW	8		
WD-154	END OF CONSTRUCTION	2		
	TRAFFIC DELINEATORS	18		



* THIS LOCATION FOR "PASSING PERMITTED" SIGN SHOULD BE SHIFTED IF A GOOD SIGHT DISTANCE IS NOT PROVIDED.

PLAN
NTS

NOTE :
REVERSE SIGNING FOR REPAIRS TO
REMAINING PORTION OF BRIDGE DECK

SUPERSEDED
S-1496-95 BY REVISION 2
SUPERSEDED (2)

GENERAL NOTES

- THIS DRAWING ILLUSTRATES TRAFFIC SIGNING AND DELINEATION REQUIREMENTS FOR THE TWO STAGES OF BRIDGE REPAIRS
- WHEN SWITCHING FROM ONE STAGE OF CONSTRUCTION TO THE NEXT, EMPLOY FLAGPERSONS AND ENSURE APPROPRIATE SIGNING
- ORANGE FLAGS TO BE INSTALLED ON ALL SIGNS DURING DAYLIGHT HOURS
- FLASHERS TO BE INSTALLED AT ALL BRIDGE CONSTRUCTION AHEAD SIGNS AND A FEW ON BARRICADES AT NIGHT AS DETERMINED BY ENGINEER
- ALL SIGNS NOT IN EFFECT TO BE COVERED OR TAKEN DOWN
- ALL SIGNS SHOWN ARE AT MINIMUM DISTANCES WHICH MAY BE INCREASED OR REGULATED DEPENDENT ON CONDITIONS
- WHEN FLAGPERSONS ARE EMPLOYED (THEY MUST BE CERTIFIED), THEY MUST STAND WITHIN THE 50 km/h ZONE AND ARE REQUIRED TO WEAR REFLECTORIZED VESTS AND WHITE COVERALLS AT ALL TIMES. STOP AND GO PADDLES SHALL BE USED BOTH NIGHT AND DAY. SIGNAL WANDS ARE TO BE USED ON FLASHLIGHTS AT NIGHT
- ALL SIGNS ARE TO BE KEPT CLEAN, DAMAGED OR WORN OUT SIGNS ARE TO BE REPLACED
- BRIDGE ENGINEER OR PROJECT MANAGER MAY MAKE ADJUSTMENTS TO SIGNS AS REQUIRED TO SUIT LOCAL OR SITE CONDITIONS

APPROVED EXECUTIVE DIRECTOR BRIDGE ENGINEERING				Alberta TRANSPORTATION AND UTILITIES BRIDGE ENGINEERING BRANCH						
REV 95-03-08 REDRAWN FROM S-1496 JM				DATE March 23/95						
DESIGNED	DRAWN	DATE	CHECKED	DATE	STREAM	LOCATION	HIGHWAY	FILE	SHEET	DRAWING
JM	HWM	95-03-06	[Signature]	March 23/95					1 of 1	S-1496-95