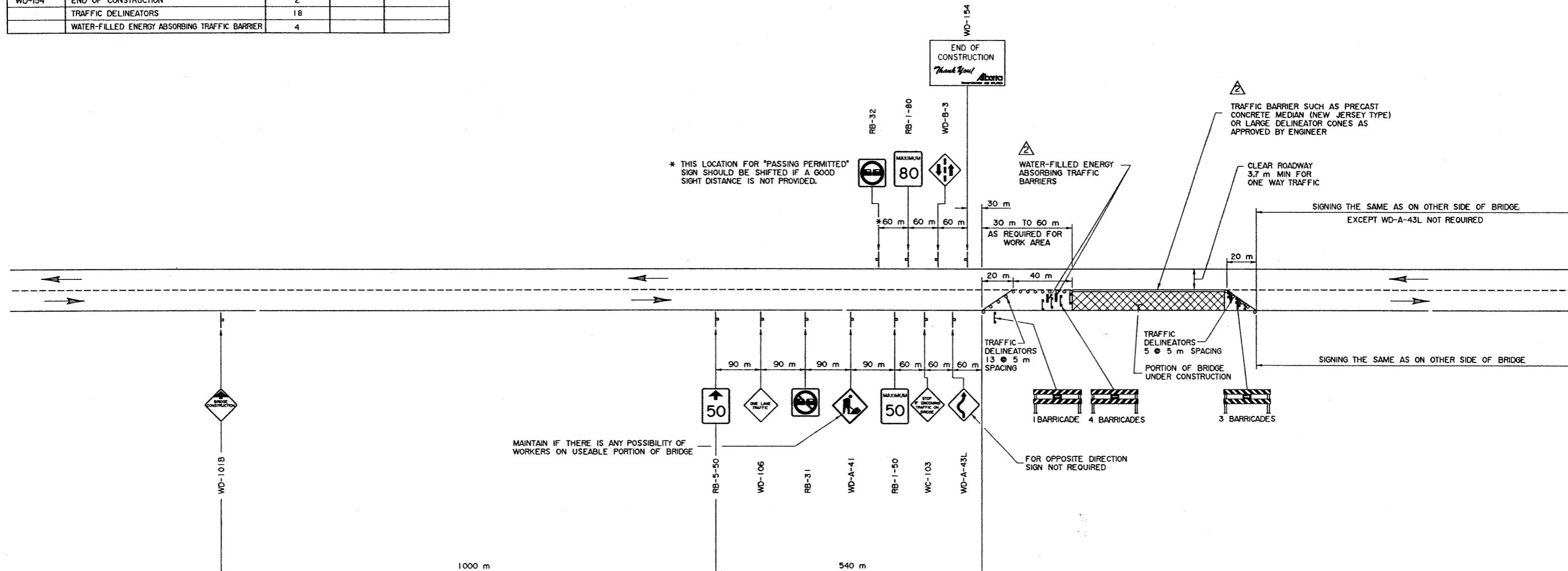


SIGNING MATERIALS LIST

SIGN NO.	MESSAGE OR DESCRIPTION	TOTAL NO. REQ'D FROM DRAWING	NUMBER ON HAND	ADDITIONAL SIGNS REQUIRED
RB-1-50	MAXIMUM SPEED 50	2		
RB-1-80	MAXIMUM SPEED 80	2		
RB-5-50	MAXIMUM SPEED AHEAD 50	2		
RB-31	DO NOT PASS	2		
RB-32	PASSING PERMITTED	2		
WC-103	STOP IF ONCOMING TRAFFIC ON BRIDGE	2		
WD-A-41	ROAD WORK	2		
WD-A-43L	ROADSIDE DIVERSION LEFT	1		
WD-B-3	TWO WAY TRAFFIC AHEAD	2		
WD-101B	BRIDGE CONSTRUCTION AHEAD	2		
WD-106	ONE LANE TRAFFIC	2		
WD-116	BARRICADE STANDS	16		
WD-116-1L	BARRICADE LEFT	10		
WD-116-1R	BARRICADE RIGHT	6		
WD-116-5	BARRICADE ARROW	8		
WD-154	END OF CONSTRUCTION	2		
	TRAFFIC DELINEATORS	18		
	WATER-FILLED ENERGY ABSORBING TRAFFIC BARRIER	4		



PLAN
NTS

NOTE :
REVERSE SIGNING FOR REPAIRS TO
REMAINING PORTION OF BRIDGE DECK

SUPERSEDED
BY TEB 1.112 SHEET ① BY REVISION Δ (96-11-28)

GENERAL NOTES

- THIS DRAWING ILLUSTRATES TRAFFIC SIGNING AND DELINEATION REQUIREMENTS FOR THE TWO STAGES OF BRIDGE REPAIRS
- WHEN SWITCHING FROM ONE STAGE OF CONSTRUCTION TO THE NEXT, EMPLOY FLAGPERSONS AND ENSURE APPROPRIATE SIGNING
- ORANGE FLAGS TO BE INSTALLED ON ALL SIGNS DURING DAYLIGHT HOURS
- FLASHERS TO BE INSTALLED AT ALL BRIDGE CONSTRUCTION AHEAD SIGNS AND A FEW ON BARRICADES AT NIGHT AS DETERMINED BY ENGINEER
- ALL SIGNS NOT IN EFFECT TO BE COVERED OR TAKEN DOWN
- ALL SIGNS SHOWN ARE AT MINIMUM DISTANCES WHICH MAY BE INCREASED OR REGULATED DEPENDENT ON CONDITIONS
- WHEN FLAGPERSONS ARE EMPLOYED (THEY MUST BE CERTIFIED), THEY MUST STAND WITHIN THE 50 km/h ZONE AND ARE REQUIRED TO WEAR REFLECTORIZED VESTS AND WHITE COVERALLS AT ALL TIMES. STOP AND GO PADDLES SHALL BE USED BOTH NIGHT AND DAY. SIGNAL WANDS ARE TO BE USED ON FLASHLIGHTS AT NIGHT
- ALL SIGNS ARE TO BE KEPT CLEAN, DAMAGED OR WORN OUT SIGNS ARE TO BE REPLACED
- BRIDGE ENGINEER OR PROJECT MANAGER MAY MAKE ADJUSTMENTS TO SIGNS AS REQUIRED TO SUIT LOCAL OR SITE CONDITIONS

ORIGINAL DRAWING APPROVED BY J. RAMOTAR EXECUTIVE DIRECTOR BRIDGE ENGINEERING MAR 23, 1995		Alberta TRANSPORTATION AND UTILITIES BRIDGE ENGINEERING BRANCH	
95-11-24 WATER BARRIER ADDED AND BARRIER NOTE 95-03-08 REDRAWN FROM S-1496		SIGNING AND DELINEATION FOR TWO LANE LOCAL ROAD ONE WAY TRAFFIC BRIDGE REPAIRS	
DESIGNED	DRAWN	DATE	CHECKED
JM	HWM	95-03-06	JM
DATE	DATE	DATE	DATE
95-03-23	95-03-23	95-03-23	95-03-23
STREAM	LOCATION	HIGHWAY	FILE
SHEET	1 of 1	DRAWING	S-1496-95

NOTE: THIS DRAWING HAS BEEN REDUCED TO 22"X34" DO NOT SCALE