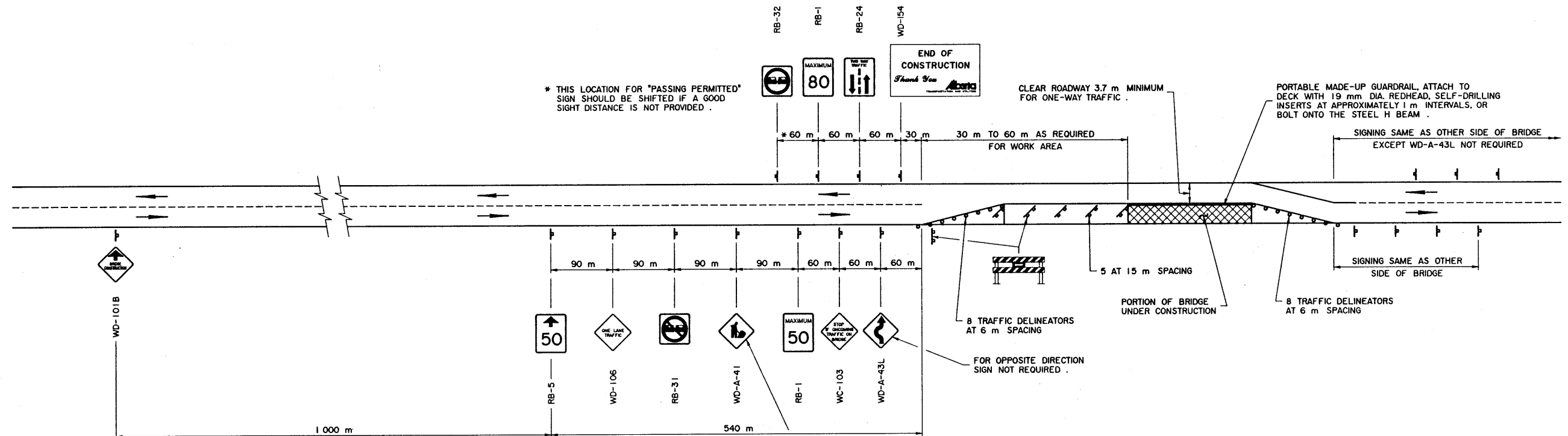


SIGNING MATERIAL LIST				
SIGN NO.	MESSAGE DESCRIPTION	TOTAL NO. REQ'D. FROM DRAWING	NUMBER ON HAND	ADDITIONAL SIGNS REQUIRED
RB-1	MAXIMUM SPEED 50	2		
RB-1	MAXIMUM SPEED 80	2		
RB-5	MAXIMUM SPEED AHEAD 50	2		
RB-24	TWO-WAY TRAFFIC (SYMBOL AND MESSAGE)	2		
RB-31	DO NOT PASS (SYMBOL)	2		
RB-32	PASSING PERMITTED (SYMBOL)	2		
WC-103	STOP IF ONCOMING TRAFFIC ON BRIDGE	2		
WD-A-41	ROADWORK (SYMBOL)	2		
WD-A-43L	ROADSIDE DIVERSION LEFT (SYMBOL)	1		
WD-101B	BRIDGE CONSTRUCTION AHEAD	2		
WD-106	ONE LANE TRAFFIC	2		
WD-116	BARRICADE STANDS	12		
WD-116-1L	BARRICADE LEFT (SYMBOL)	12		
WD-116-5	BARRICADE ARROW	6		
WD-154	END OF CONSTRUCTION	2		
N/A	DELINEATORS	16		



GENERAL NOTES

- THIS DRAWING ILLUSTRATES TRAFFIC SIGNING AND DELINEATION REQUIREMENTS FOR THE TWO STAGES OF BRIDGE REPAIRS .
- WHEN SWITCHING FROM ONE STAGE OF CONSTRUCTION TO THE NEXT, EMPLOY FLAGPERSONS AND ENSURE APPROPRIATE SIGNING .
- RED FLAGS TO BE INSTALLED ON ALL SIGNS DURING DAYLIGHT HOURS .
- FLASHERS TO BE PLACED AT ALL SIGNS INCLUDING BARRICADES AT NIGHT .
- ALL SIGNS NOT IN EFFECT TO BE COVERED OR TAKEN DOWN .
- ALL SIGNS ARE AT MINIMUM DISTANCES WHICH MAY BE INCREASED OR REGULATED DEPENDENT ON CONDITIONS .

- WHEN FLAGPERSONS ARE EMPLOYED, THEY MUST STAND WITHIN THE 50 km/h ZONE AND ARE REQUIRED TO WEAR REFLECTORIZED JACKETS AND WHITE COVERALLS AT ALL TIMES. STOP AND GO PADDLES SHALL BE USED BOTH DAY AND NIGHT. WANDS ARE TO BE USED ON FLASHLIGHTS AT NIGHT .
- ALL SIGNS ARE TO BE KEPT CLEAN, DAMAGED OR WORN OUT SIGNS ARE TO BE REPLACED .
- BRIDGE ENGINEER OR PROJECT MANAGER MAY MAKE ADJUSTMENTS TO SIGNS AND SIGN DISTANCES AS REQUIRED TO SUIT LOCAL OR SITE CONDITIONS .

DESIGNED		DRAWN		DATE		CHECKED		DATE		STREAM		LOCATION		HIGHWAY		FILE		SHEET		DRAWING	
J. M.		W. A. B.		91-06-04		CTC		91-07-11										1 of 1		S-1496	

APPROVED

M. D. D. D.

EXECUTIVE DIRECTOR
BRIDGE ENGINEERING

DATE July 12, 1991

Albarta TRANSPORTATION AND UTILITIES
BRIDGE ENGINEERING BRANCH

SIGNING AND DELINEATION FOR
TWO LANE LOCAL ROAD
ONE-WAY TRAFFIC
BRIDGE REPAIRS