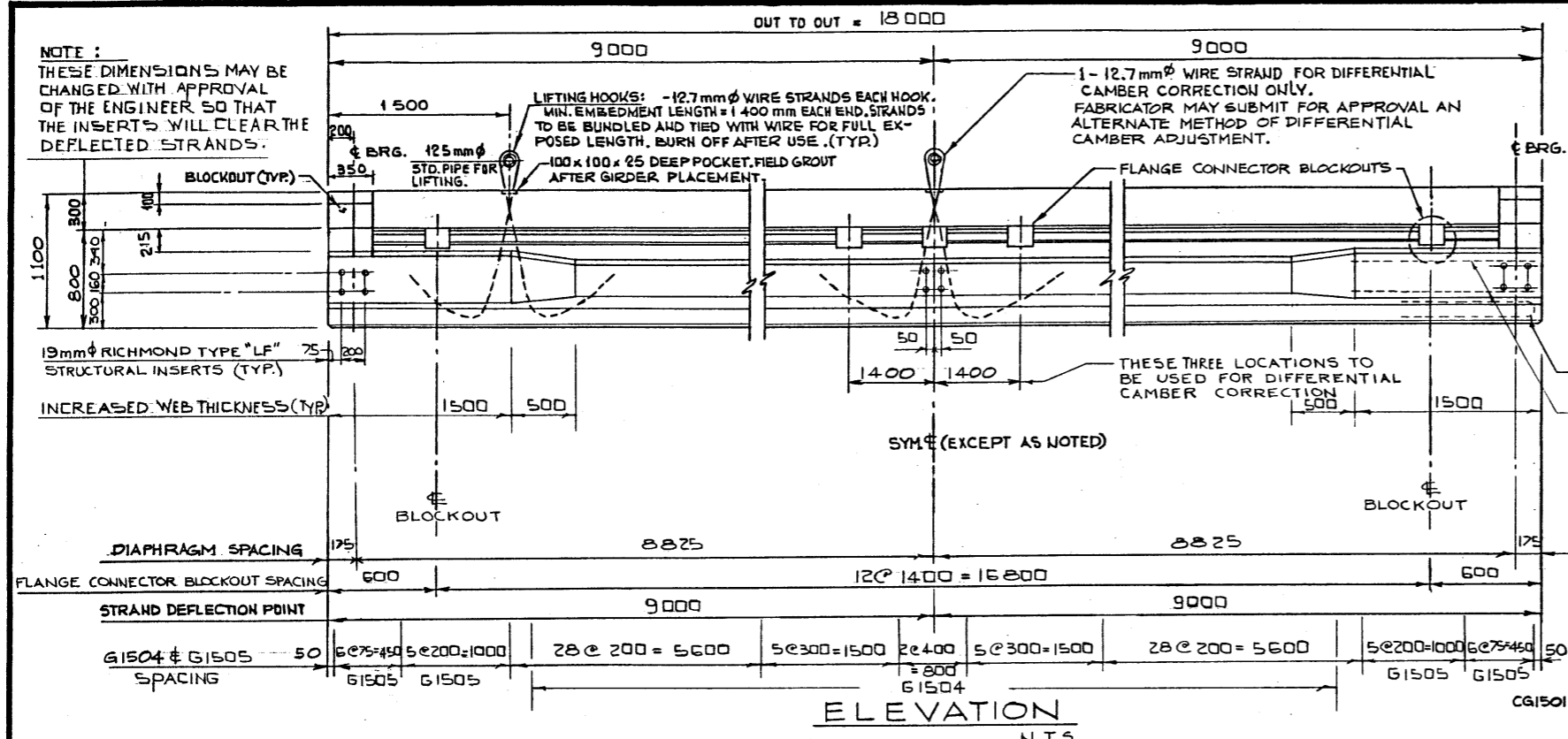
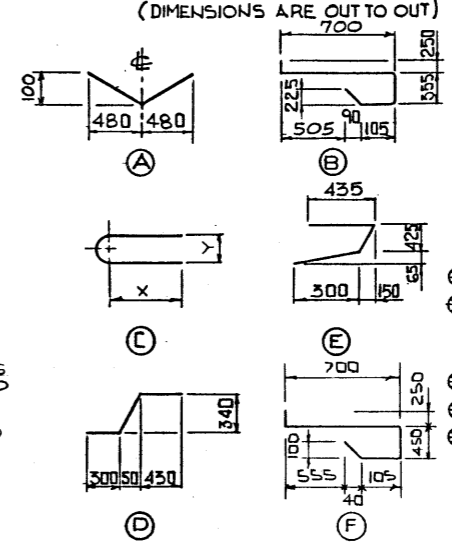


NOTE:
THESE DIMENSIONS MAY BE CHANGED WITH APPROVAL OF THE ENGINEER SO THAT THE INSERTS WILL CLEAR THE DEFLECTED STRANDS.



BAR TYPES:
(DIMENSIONS ARE OUT TO OUT)



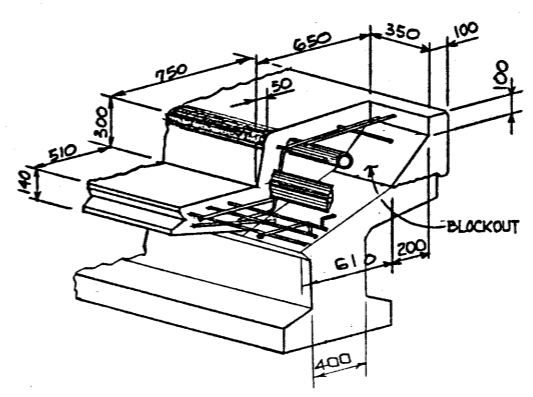
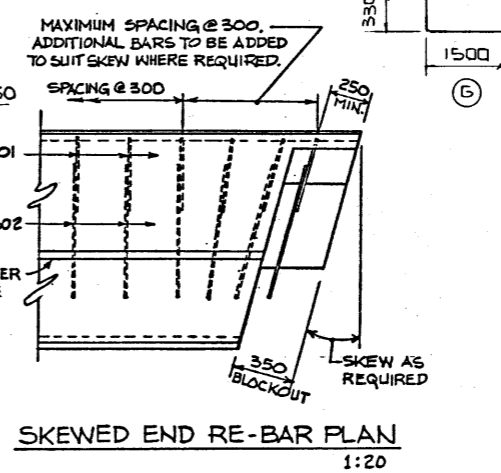
BAR LIST ONE SQUARE GIRDER							
MARK	SIZE	NO.	TYPE	X	Y	LENGTH	MASS
G 1501	15	12	STR.			9750	184
G 1502	15	65	A			980	100
G 1503	15	12	STR.			9250	174
G 1504	15	134	B			1655	348
G 1505	15	48	F			1615	122
G 1506	15	8	C	945	110	2065	26
G 1507	15	4	G			3330	21
G 2001	20	86	STR.			960	194
G 2002	20	8	STR.			9250	174
C 1501	15	10	STR.			9250	145
C 1502	15	4	C	400	110	970	6
						TOTAL kg: .410	
						TOTAL kg: 1343	
						GIRDER TOTAL kg: 1753	

- INDICATES EPOXY COATED PLAIN

* QUANTITY BASED ON 6 ANCHOR BOLT ASSEMBLIES. SEE BRIDGERAIL LAYOUT FOR ACTUAL NUMBER OF ANCHOR BOLT ASSEMBLIES.

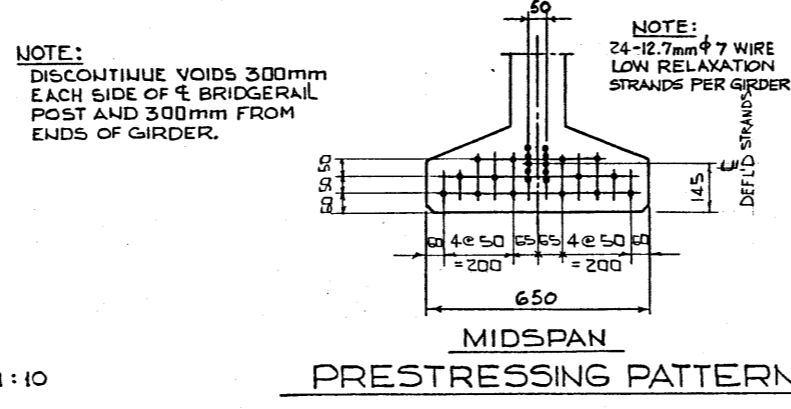
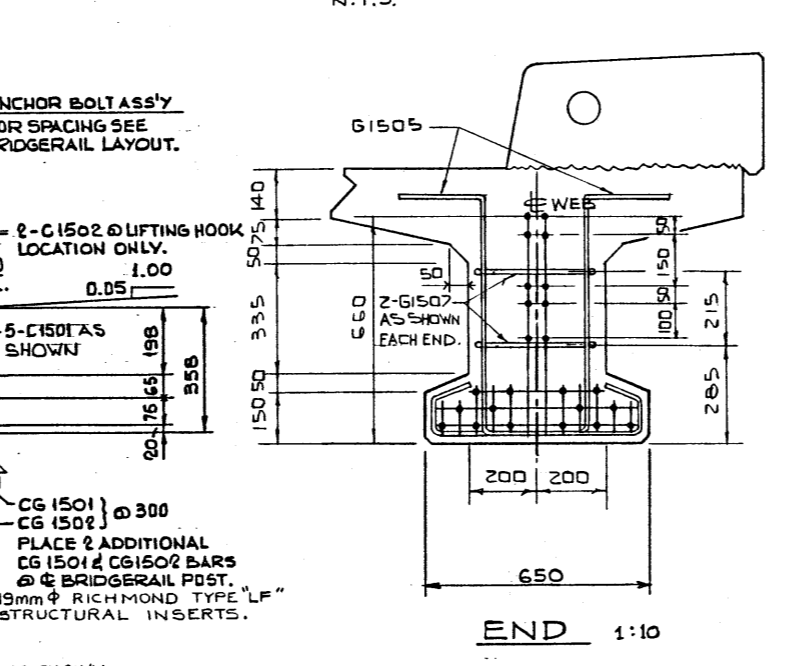
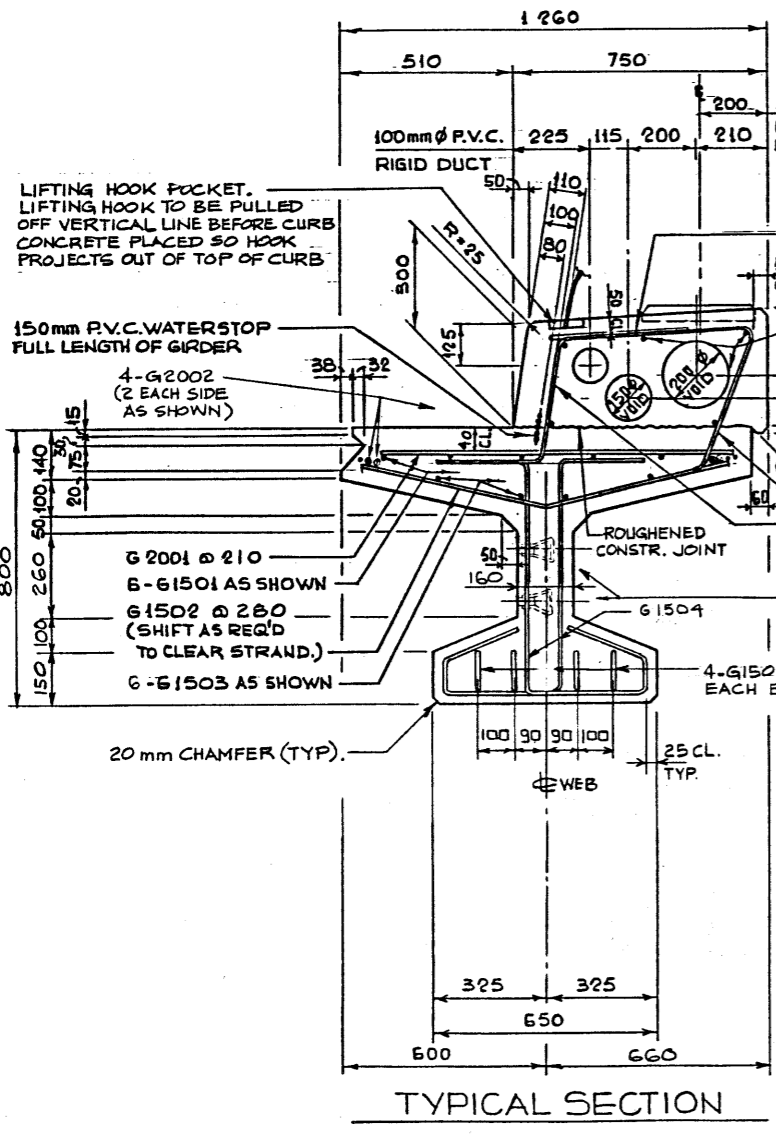
GENERAL NOTES

- DESIGN:**
- C.S.A. CAN 3-S6-M78
 - NO TENSION IN TOP FLANGE OF GIRDER.
- LOADING:**
- DEAD LOAD - GIRDER & CURBS = 14.20 kN/M
 - WEARING SURFACE, SHEAR KEYS, RAILS = 1.09 kN/M
 - LIVE LOAD - C.S.A. CAN 3-S6-M78 - HS300 PLUS IMPACT
 - 0.95 WHEEL LINES/GIRDER
- PRESTRESSING STEEL:**
- PRESTRESSING STEEL SHALL BE 12.7 mm ϕ - 7 WIRE LOW RELAXATION STRAND (F_{pu} = 1860 MPa)
 - INITIAL TENSIONING LOAD: 128.6 kN/STRAND
 - DESIGN LOAD AFTER LOSSES: 102.2 kN/STRAND
- MATERIALS:**
- STANDARD WEIGHT CONCRETE WITH NOT LESS THAN 5% AIR ENTRAINMENT (WHEN MEASURED IN PLASTIC STATE) SHALL BE USED THROUGHOUT.
 - 28 DAY STRENGTH: 35 MPa
 - RELEASE STRENGTH: 28 MPa
 - REINFORCING STEEL SHALL MEET THE REQUIREMENTS OF G30.12 M GRADE 300.
- FABRICATION:**
- GIRDERS SHALL CONFORM TO THE REQUIREMENTS OF THE CURRENT ALBERTA BRIDGE BRANCH "SPECIFICATION FOR THE MANUFACTURE OF PRESTRESSED AND PRECAST CONCRETE BRIDGE UNITS B-190M".
 - ALL EXPOSED CONCRETE CORNERS TO HAVE 20 mm CHAMFER OR FILLET UNLESS OTHERWISE NOTED.
 - GIRDER FORMS MUST BE ADJUSTABLE SUCH THAT THE TOP AND BOTTOM FLANGES OF THE GIRDER WILL FOLLOW THE SAME PARABOLIC CURVE WITH A MIDPOINT SAG AS SPECIFIED AT THE TIME OF CASTING.
 - EXPECTED NET GIRDER CAMBER DUE TO PRESTRESS IS 30mm.
 - CURBS TO BE PLANT CAST WITH GIRDERS SIMPLY SUPPORTED.
- ERECTION:**
- LIFTING FORCE AT EACH HOOK MUST BE VERTICAL AT ALL TIMES.
 - GIRDER SURFACE MUST BE LEVEL AT ALL TIMES.
 - THEORETICAL MASS OF ONE GIRDER IS 26.1 TONNES.
 - CAMBER DIFFERENTIAL TO BE ELIMINATED BEFORE WELDING FLANGE CONNECTORS, USING JACKING BEAM & LIFTING HOOKS AT MID SPAN.



NOTE:
GIRDERS TO BE GIVEN APPROXIMATE TEMPORARY LATERAL SUPPORT IMMEDIATELY AFTER STRIPPING AND UNTIL GIRDER ARE ERECTED.

SUPERSEDED
BY S-1594 4 2007



DESIGNED BY: J. A. S.
DRAWN BY: P. SZOTIS
DATE: 82 03 03
M.P.-260

DESIGNED		DRAWN BY		DATE		CHECKED BY		DATE		STREAM		LOCATION		HWY. NO.		SCALE		FILE NO.		SHEET		DWG. NO.	
T. MORRISON		L. W. KOHLMANN														SHOWN				5-1514		M.P.-260	