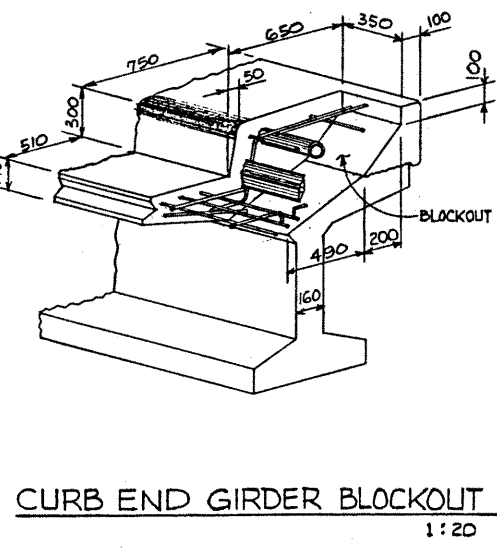
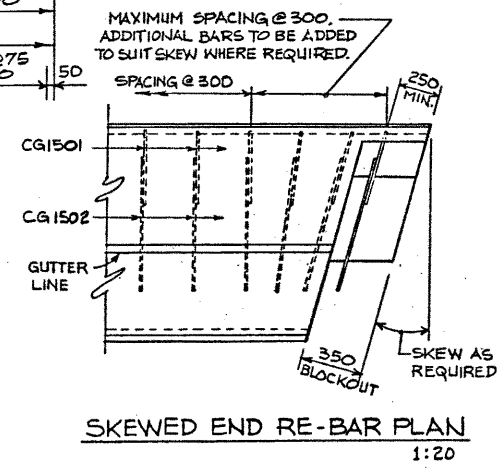
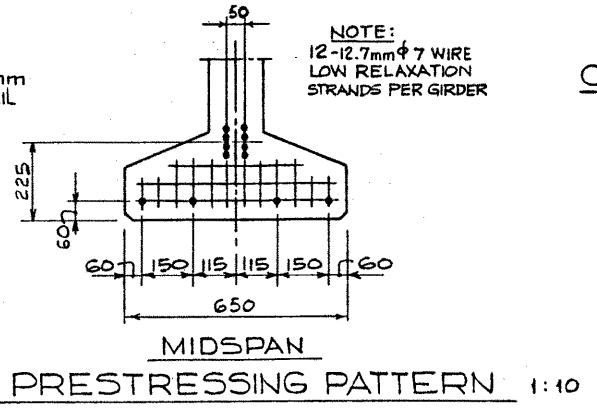
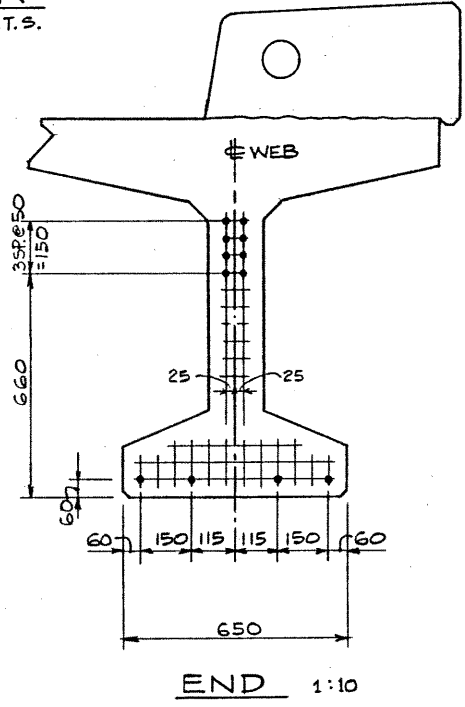
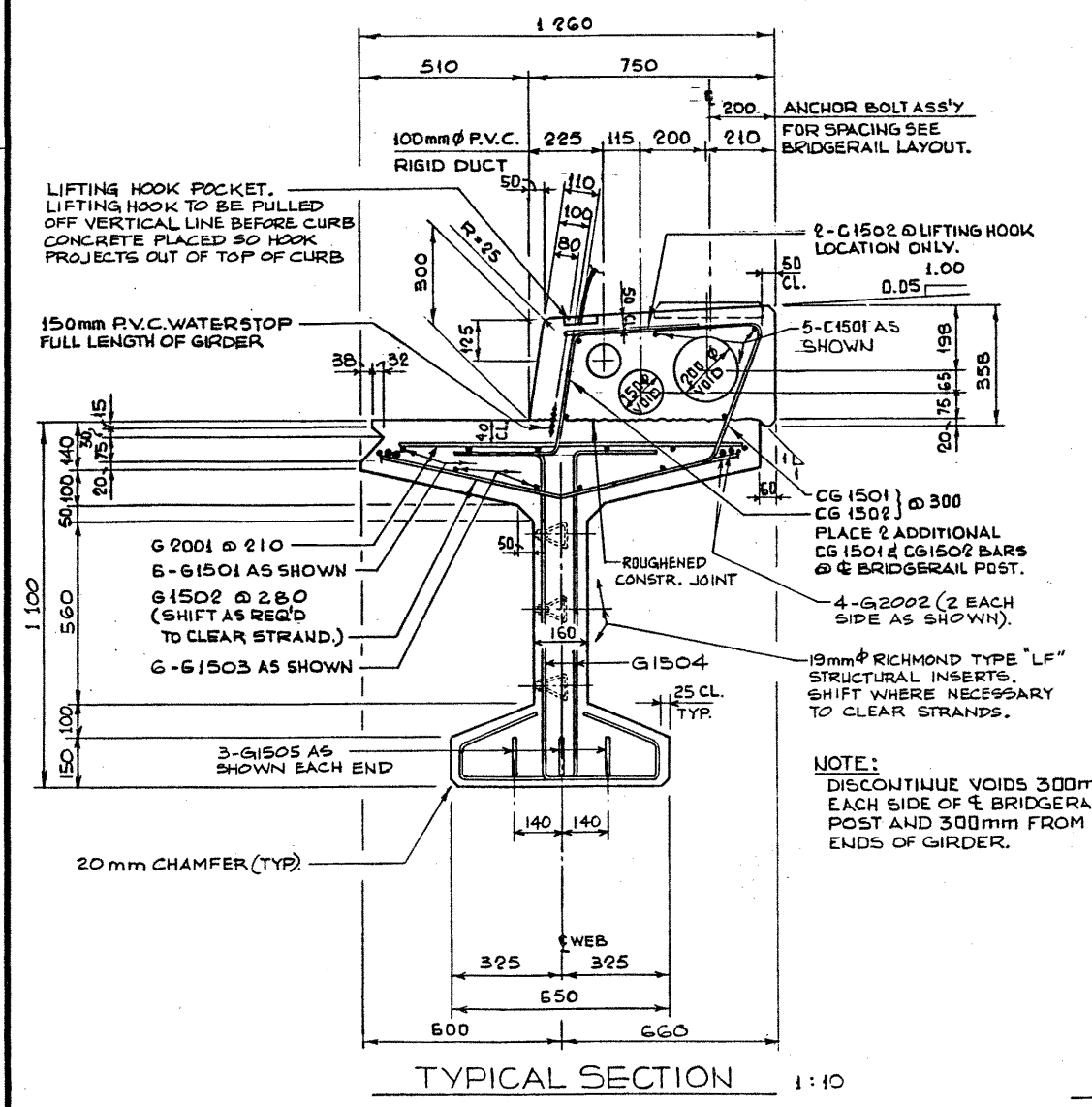


BAR LIST: ONE SQUARE GIRDER							
MARK	SIZE	NO.	TYPE	X	Y	LENGTH	MASS
G 1501	15	12	STR.			7420	140
G 1502	15	48	A			980	74
G 1503	15	12	STR.			7420	140
G 1504	15	96	B			1 955	295
G 1505	15	6	C	945	110	2 065	19
G 2001	20	64	STR.			960	145
G 2002	20	8	STR.			7730	146
C 1501	15	10	STR.			7420	116
C 1502	15	4	C	400	110	970	6
CG 1501	15	56	E			1 200	106
CG 1502	15	56	D			1 075	95
						TOTAL kg:	323
						TOTAL kg:	959
						GIRDER TOTAL kg:	1282

- INDICATES EPOXY COATED PLAIN

ELEVATION N.T.S.



GENERAL NOTES

- DESIGN:
- C.S.A. CAN 3-S6-M78
 - NO TENSION IN TOP FLANGE OF GIRDER.
- LOADING:
- DEAD LOAD - GIRDER & CURB = 15.5 kN/M
 - WEARING SURFACE, SHEAR KEYS, RAILS = 1.47 kN/M
 - LIVE LOAD - C.S.A. CAN 3-S6-M78 - MS300 PLUS IMPACT
 - 0.95 WHEEL LINES/GIRDER
- PRESTRESSING STEEL:
- PRESTRESSING STEEL SHALL BE 12.7mm ϕ - 7 WIRE LOW RELAXATION STRAND (F_{pu} = 1860 MPA)
 - INITIAL TENSIONING LOAD: 128.6 kN/STRAND
 - DESIGN LOAD AFTER LOSSES: 110.0 kN/STRAND
- MATERIALS:
- STANDARD WEIGHT CONCRETE WITH NOT LESS THAN 5% AIR ENTRAINMENT (WHEN MEASURED IN PLASTIC STATE) SHALL BE USED THROUGHOUT.
 - 28 DAY STRENGTH: 35 MPA
 - RELEASE STRENGTH: 28 MPA
 - REINFORCING STEEL SHALL BE A MINIMUM OF G30-12M GRADE 300.
- FABRICATION:
- GIRDERS SHALL CONFORM TO THE REQUIREMENTS OF THE CURRENT ALBERTA BRIDGE BRANCH "SPECIFICATION FOR THE MANUFACTURE OF PRESTRESSED AND PRECAST CONCRETE BRIDGE UNITS B-190M".
 - ALL EXPOSED CONCRETE CORNERS TO HAVE 20 mm CHAMFER OR FILLET UNLESS OTHERWISE NOTED.
 - GIRDER FORMS MUST BE ADJUSTABLE SUCH THAT THE TOP AND BOTTOM FLANGES OF THE GIRDER WILL FOLLOW THE SAME PARABOLIC CURVE WITH A MIDPOINT SAG AS SPECIFIED AT THE TIME OF CASTING.
 - EXPECTED GIRDER CAMBER DUE TO PRESTRESS IS 7 mm.
 - CURBS TO BE PLANT CAST WITH GIRDERS SIMPLY SUPPORTED.
- ERECTION:
- LIFTING FORCE AT EACH HOOK MUST BE VERTICAL AT ALL TIMES.
 - GIRDER SURFACE MUST BE LEVEL AT ALL TIMES.
 - THEORETICAL MASS OF ONE GIRDER IS 22.8 TONNES.
 - CAMBER DIFFERENTIAL TO BE ELIMINATED BEFORE WELDING FLANGE CONNECTORS, USING JACKING BEAM & LIFTING HOOKS AT MID SPAN.

NOTE: GIRDERS SHALL BE GIVEN ADEQUATE TEMPORARY LATERAL SUPPORT IMMEDIATELY AFTER STRIPPING AND UNTIL GIRDERS ARE ERECTED.

SUPERSEDED

BY S-1554 15/05/07 29.07.07

DESIGNED BY: J. A. S. DATE: 82-07-12
DRAWN BY: P. SZOIS DATE: 82-07-12
M.P.-264

DESIGNED		DRAWN BY		DATE		CHECKED BY		DATE		STREAM		LOCATION		HWT. NO.		SCALE		FILE NO.		SHEET		DWN. NO.	
K.S.T.		V.G.B.		82-07-12												SHOWN				S-1526			

APPROVED

CHIEF BRIDGE ENGINEER

Albera TRANSPORTATION BRIDGE AND STRUCTURAL ENGINEERING BRANCH METRIC

PRESTRESSED CONCRETE 14m TYPE D.B.T. 1100 x 1200 CURB GIRDER