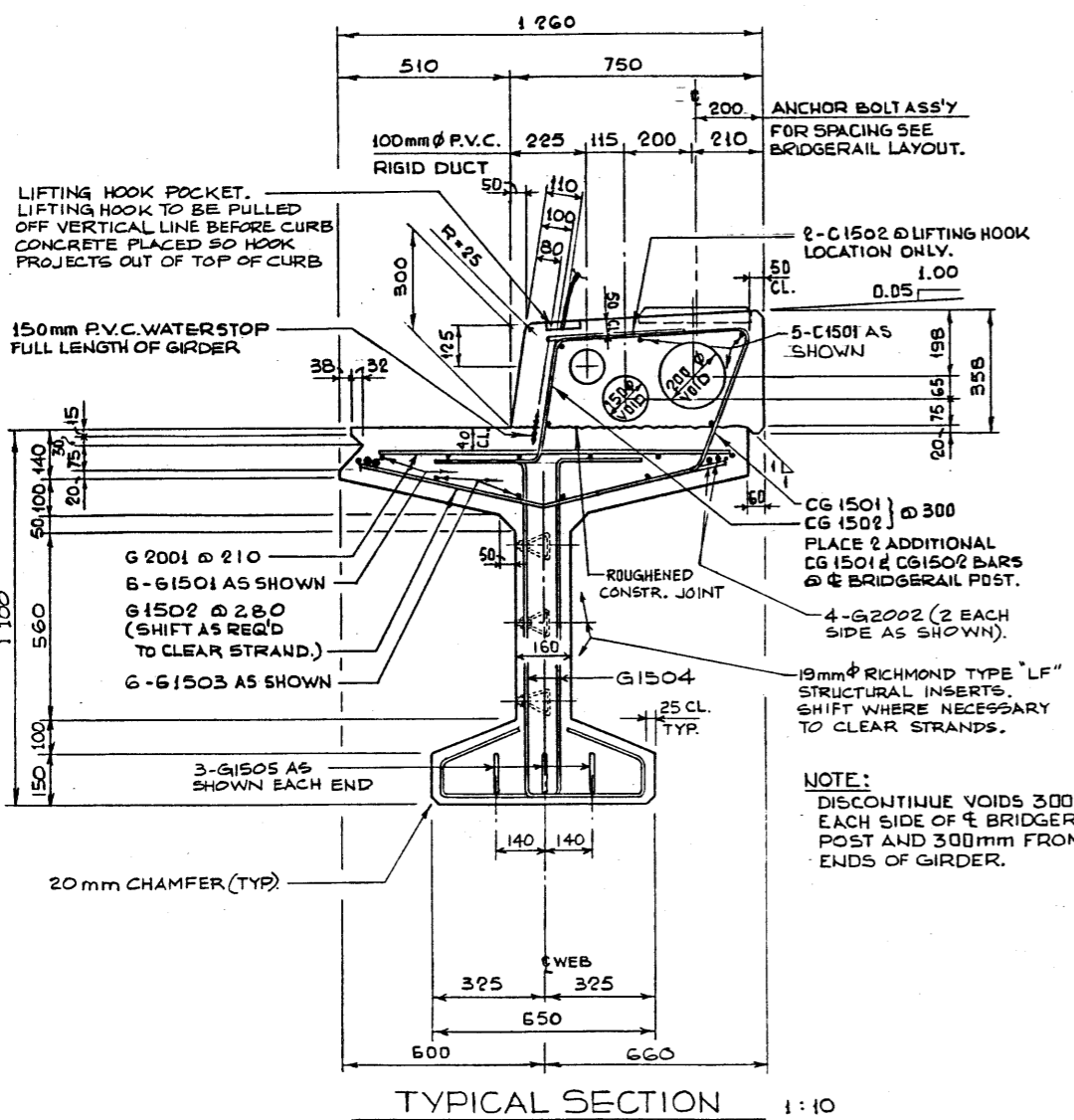
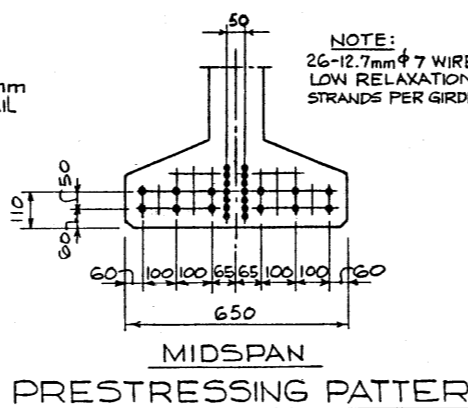
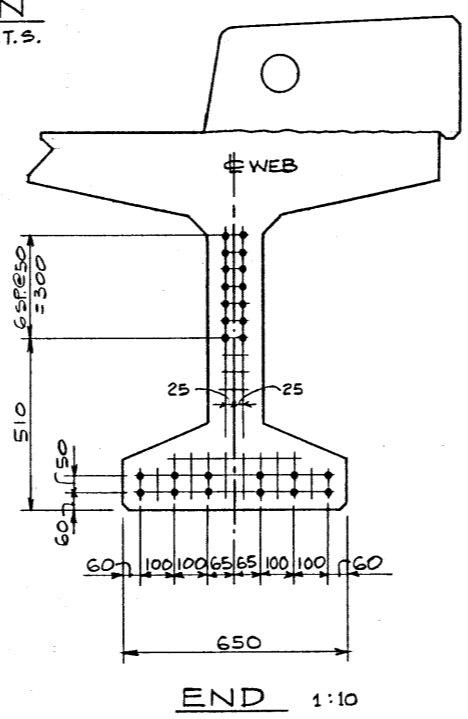
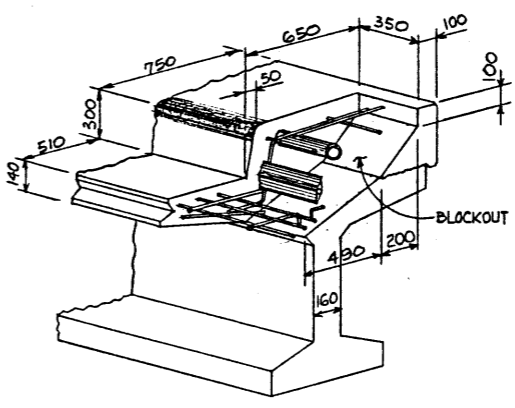
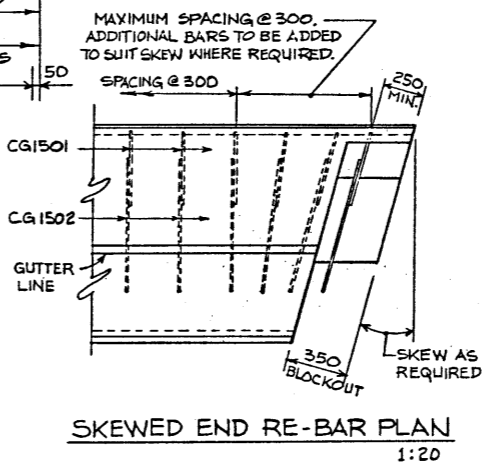


BAR LIST: ONE SQUARE GIRDER											
MARK	SIZE	NO.	TYPE	X	Y	LENGTH	MASS				
G 1501	15	12	STR.			11 420	215				
G 1502	15	77	A			980	118				
G 1503	15	12	STR.			11 420	215				
G 1504	15	170	B			1 955	522				
G 1505	15	6	C	945	110	2 065	19				
G 2001	20	102	STR.			960	231				
G 2002	20	8	STR.			11 730	221				
C 1501	15	10	STR.			11 420	179				
C 1502	15	4	C	400	110	970	6				
CG 1501	15	89	E			1 200	168				
CG 1502	15	89	D			1 075	150				
* - INDICATES EPOXY COATED PLAIN TOTAL kg: 503 TOTAL kg: 1 541 GIRDER TOTAL kg: 20 44											

GENERAL NOTES

- DESIGN:**
- C.S.A. CAN 3-S6-M78
 - NO TENSION IN TOP FLANGE OF GIRDER.
- LOADING:**
- DEAD LOAD - GIRDER & CURB = 15.5 kN/M
 - WEARING SURFACE, SHEAR KEYS, RAILS = 1.47 kN/M
 - LIVE LOAD - C.S.A. CAN 3-S6-M78 - MS300 PLUS IMPACT
 - 0.95 WHEEL LINES/GIRDER
- PRESTRESSING STEEL:**
- PRESTRESSING STEEL SHALL BE 12.7 mm Ø - 7 WIRE LOW RELAXATION STRAND (Fpu = 1860 MPa)
 - INITIAL TENSIONING LOAD: 128.6 kN/STRAND
 - DESIGN LOAD AFTER LOSSES: 100.4 kN/STRAND
- MATERIALS:**
- STANDARD WEIGHT CONCRETE WITH NOT LESS THAN 5% AIR ENTRAINMENT (WHEN MEASURED IN PLASTIC STATE) SHALL BE USED THROUGHOUT.
 - 28 DAY STRENGTH: 35 MPa
 - RELEASE STRENGTH: 28 MPa
 - REINFORCING STEEL SHALL BE A MINIMUM OF G30-12M GRADE 300.
- FABRICATION:**
- GIRDERS SHALL CONFORM TO THE REQUIREMENTS OF THE CURRENT ALBERTA BRIDGE BRANCH "SPECIFICATION FOR THE MANUFACTURE OF PRESTRESSED AND PRECAST CONCRETE BRIDGE UNITS B-190M".
 - ALL EXPOSED CONCRETE CORNERS TO HAVE 20 mm CHAMFER OR FILLET UNLESS OTHERWISE NOTED.
 - GIRDER FORMS MUST BE ADJUSTABLE SUCH THAT THE TOP AND BOTTOM FLANGES OF THE GIRDER WILL FOLLOW THE SAME PARABOLIC CURVE WITH A MIDPOINT SAG AS SPECIFIED AT THE TIME OF CASTING.
 - EXPECTED GIRDER CAMBER DUE TO PRESTRESS IS 33 mm.
 - CURBS TO BE PLANT CAST WITH GIRDERS SIMPLY SUPPORTED.
- ERECTION:**
- LIFTING FORCE AT EACH HOOK MUST BE VERTICAL AT ALL TIMES.
 - GIRDER SURFACE MUST BE LEVEL AT ALL TIMES.
 - THEORETICAL MASS OF ONE GIRDER IS 35.5 TONNES.
 - CAMBER DIFFERENTIAL TO BE ELIMINATED BEFORE WELDING FLANGE CONNECTORS, USING JACKING BEAM & LIFTING HOOKS AT MIDSPAN.



DESIGNED BY: J. A. S.
DRAWN BY: P. SZOTIS
DATE: 81 10 26
M.P.-264

NOTE: GIRDERS SHALL BE GIVEN ADEQUATE TEMPORARY LATERAL SUPPORT IMMEDIATELY AFTER STRIPPING AND UNTIL GIRDERS ARE ERECTED.

89-05-07

SUPERSEDED

NO.	DATE	DESCRIPTION	DESIGNED	DRAWN BY	DATE	CHECKED BY	DATE	STREAM	LOCATION	HWY. NO.	SCALE	FILE NO.	SHEET	DWG. NO.
1			K.S.T.	V.G.B.	82-07-14						SHOWN			S-1530

APPROVED: _____

CHIEF BRIDGE ENGINEER

DATE: _____

Albera TRANSPORTATION BRIDGE AND STRUCTURAL ENGINEERING BRANCH METRIC

PRESTRESSED CONCRETE 22m TYPE D.B.T. 1100 x 1200 CURB GIRDER

SHOWN

S-1530