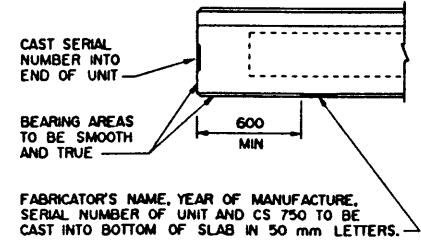
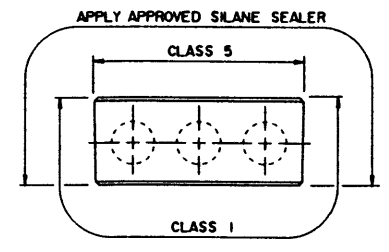
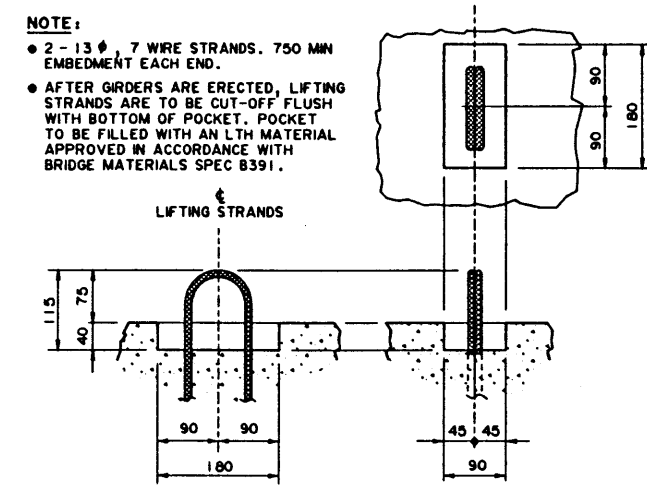


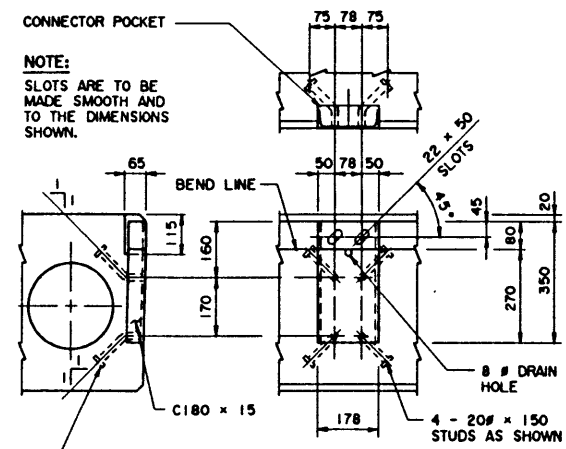
REINFORCEMENT PLAN
1:20



GIRDER FINISHES
(BY FABRICATOR)
1:20

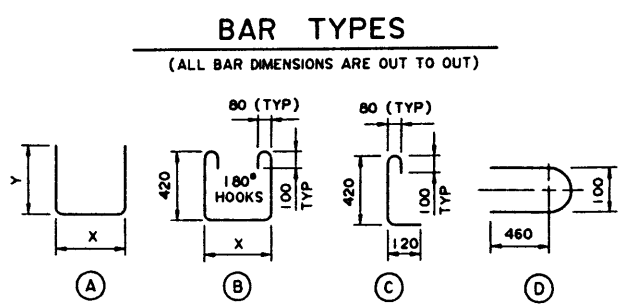


LIFTING HOOK POCKET
1:5



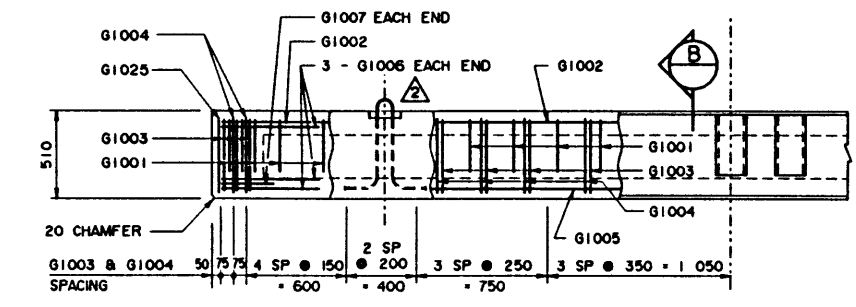
GIRDER CONNECTORS
1:10

BAR LIST: FOR SQUARE GIRDER							
MARK	SIZE	NO	TYPE	X	Y	LENGTH	MASS
G1001	10	28	A	1 125	300	1 725	38
G1002	10	5	STR			5 900	23
G1003	10	29	B	1 125		2 220	51
G1004	10	27	B	420		1 520	32
G1005	10	2	STR			5 800	9
G1006	10	6	D			1 020	5
G1007	10	2	A	1 000	300	1 600	3
G1025	10	2	C			670	1
TOTAL kg :							162

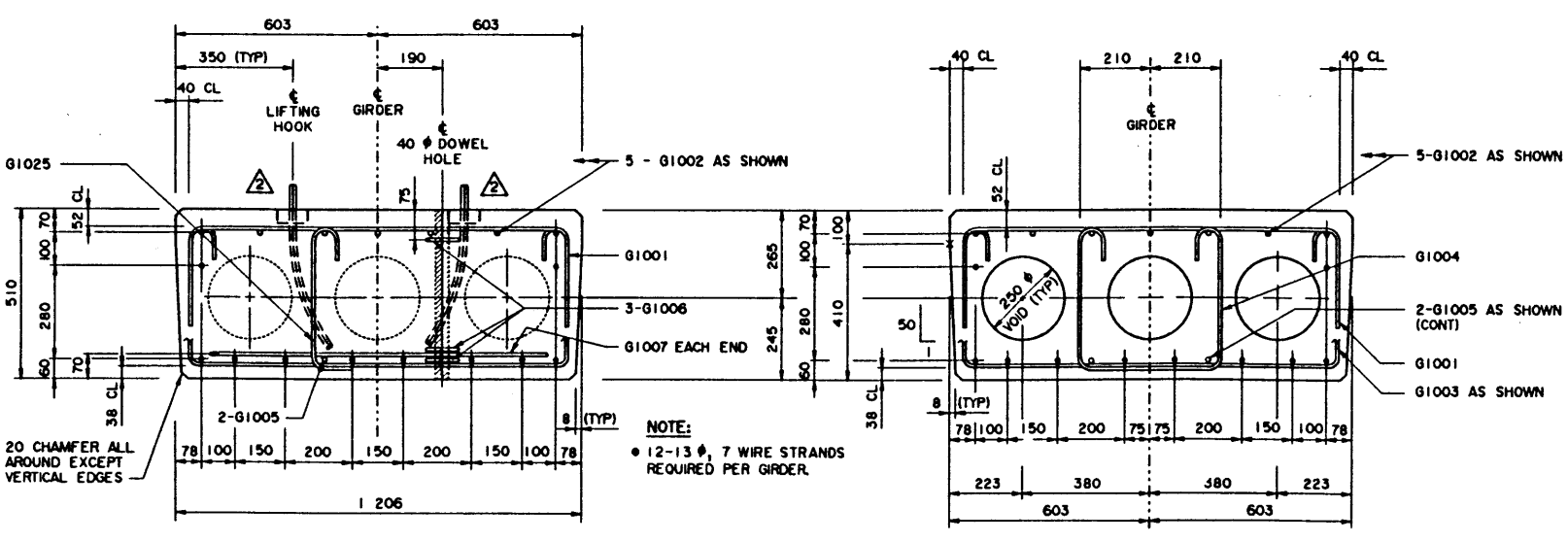


GENERAL NOTES

- ALL DRAWING REFERENCES ARE TO CURRENT DRAWINGS.
- DESIGN**
- CAN/CSA-S6-88 SPECIFICATIONS EXCEPT AS MODIFIED BELOW:
 - ALLOWABLE TENSION AT MIDSPAN IS 40% OF MODULUS OF RUPTURE (SEVERE EXPOSURE CONDITIONS).
 - NO TENSION ALLOWED IN DECK SURFACE.
- LOADING:**
 - LIVE LOAD - CAN/CSA-S6-88; CS-750 ONE WHEEL LINE PER GIRDER
 - DEAD LOAD - GIRDER = 0.93 t/m
 - WEARING SURFACE = 0.24 t/m
- MATERIALS**
- CONCRETE SHALL CONTAIN SILICA FUME AND BE MADE OF LIGHTWEIGHT COARSE AGGREGATE AND NATURAL SAND FINES. UNIT WEIGHT OF SEMI-LIGHTWEIGHT CONCRETE SHALL BE 1920 kg/m³.
- 28 DAY CONCRETE STRENGTH - 35 MPa
- RELEASE STRENGTH - 28 MPa
- PRESTRESSING STEEL SHALL BE 13 #, 7 WIRE LOW RELAXATION STRAND (f_{pu} = 1860 MPa).
- REINFORCING STEEL SHALL BE GRADE 400W (YIELD STRENGTH OF GRADE 300 USED IN DESIGN TO ALLOW TACK WELDING OF SHEAR REINFORCEMENT).
- FABRICATION**
- GIRDERS SHALL CONFORM TO THE CURRENT REQUIREMENTS OF THE SPECIFICATIONS FOR BRIDGE CONSTRUCTION SECTION 7 - PRECAST CONCRETE UNITS.
- FORCE IN PRESTRESSING STEEL:
 - INITIAL TENSIONING LOAD = 129 kN/STRAND
 - DESIGN LOAD AFTER LOSSES = 111 kN/STRAND
- ALL GALVANIZING SHALL CONFORM TO ASTM SPEC A123.
- BEND OR SHIFT REINFORCING WHERE REQUIRED TO CLEAR GIRDER CONNECTORS AND LIFTING HOOK ASSEMBLIES. STIRRUP SPACING IS TO BE MAINTAINED.
- ERECTION**
- ANY FREE SPACE BETWEEN CONNECTORS SHALL BE FILLED WITH DROP-IN WASHERS.
- CALCULATED MASS OF ONE GIRDER IS 5.75 t.
- WORK THESE DRAWINGS TOGETHER : S-1535, S-1536 AND S-1537



ELEVATION
1:20



SECTION A
1:10

SECTION B
1:10

REV	DATE	REVISIONS	BY
95-07-10		SPECIFICATION NOTE	LEA
94-04-05		LIFTING HOOK POCKET & BAR LIST	LEA
92-01-10		CONCRETE MATERIALS NOTE	DHO

ORIGINAL DRAWING
APPROVED BY
N. BOYD
EXECUTIVE DIRECTOR
BRIDGE ENGINEERING
AUG 23, 1990

Alberta TRANSPORTATION AND UTILITIES
BRIDGE ENGINEERING BRANCH

PRESTRESSED CONCRETE
6 m TYPE SC-510
INTERIOR GIRDER

DESIGNED	DRAWN	DATE	CHECKED	DATE	STREAM	LOCATION	HIGHWAY	FILE	SHEET	DRAWING
LEA	VMV	90-07-02	TJS	90-08-23					1 of 4	S-1535