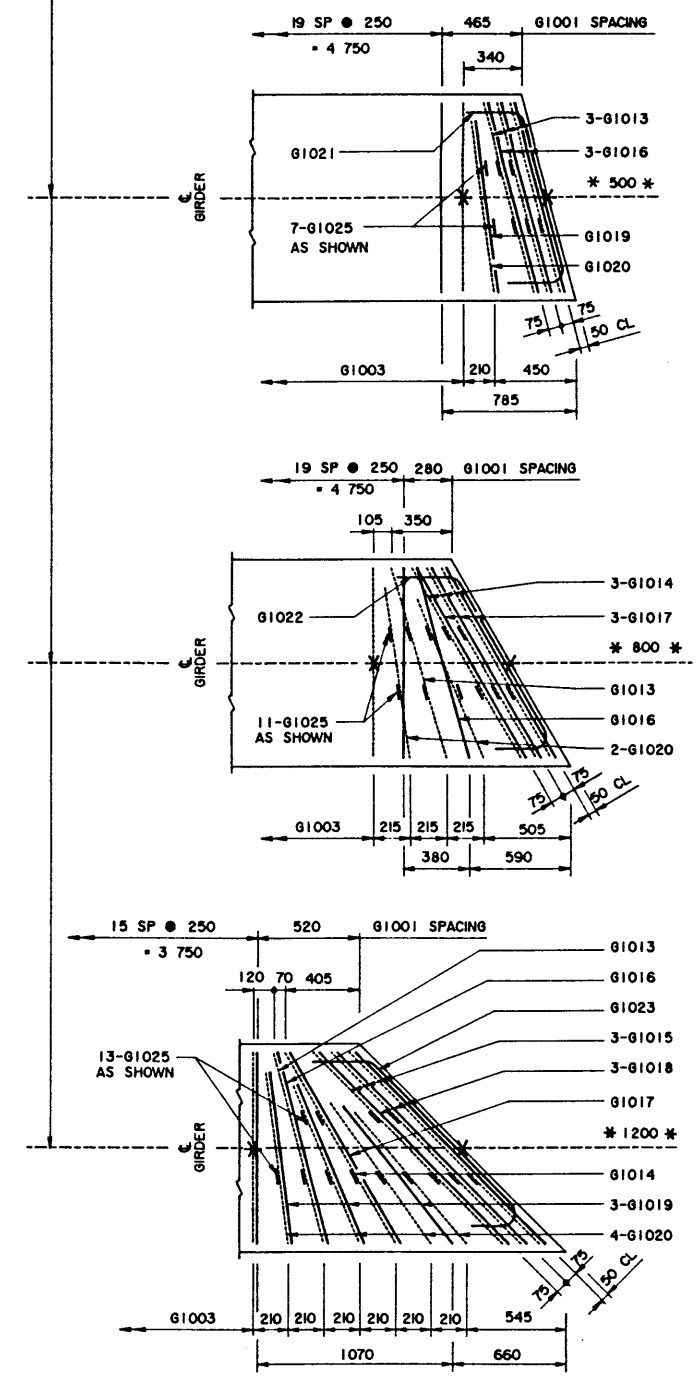


**NOTE:**

- SHIFT SLAB BARS TO CLEAR LIFTING HOOK POCKETS WHERE REQUIRED.
- SLAB BARS NOT DIMENSIONED ARE TIGHT AGAINST ADJACENT STIRRUP.
- USE THIS  $\phi$  DIMENSION TO IDENTIFY THIS STIRRUP (#) IN THE STIRRUP SERIES FOR A SQUARE ENDED UNIT.



**INTERIOR GIRDER REINFORCING BARS**  
1:20

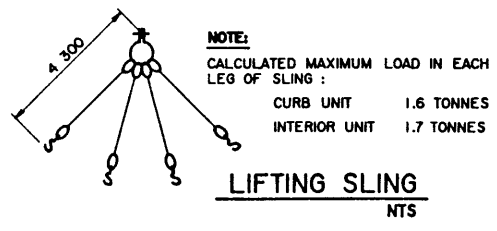
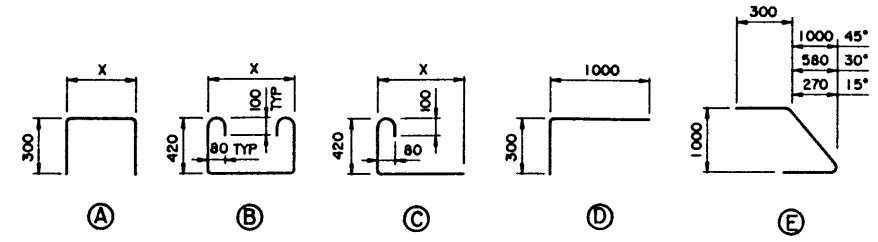
- SKEWS ARE SHOWN RIGHT HAND FORWARD.
- LEFT HAND SKEWS ARE OPPOSITE AS SHOWN.

• WORK THESE DRAWINGS TOGETHER : S-1535, S-1536 AND S-1537.

**BAR LIST: — INTERIOR SKEWED GIRDER — EXTRA BARS FOR 2 ENDS**

MARK	SIZE	TYPE	X	Y	LENGTH	15° SKEW		30° SKEW		45° SKEW	
						NO	MASS	NO	MASS	NO	MASS
G1013	10	B	165		2 260	6	11	2	4	2	4
G1014	10	B	300		2 390		6	11	2	4	
G1015	10	B	590		2 680				6	13	
G1016	10	A	165		1 765	6	8	2	3	2	3
G1017	10	A	300		1 900			6	9	2	3
G1018	10	A	590		2 190				6	10	
G1019	10	D			1 280	2	2			6	6
G1020	10	C	1000		1 520	2	2	4	5	8	9
G1021	10	E			1 585	2	2				
G1022	10	E			1 705			2	3		
G1023	10	E			1 965					2	3
G1025	10	C	120		670	14	7	22	12	26	14
TOTAL kg							32		47		69

**BAR TYPES**  
(ALL DIMENSIONS ARE OUT TO OUT) NTS



REV	DATE	REVISIONS	BY							
94-04-05		LIFTING HOOK POCKET SHAPE & DIMENSIONS	LEA							
DESIGNED	DRAWN	DATE	CHECKED	DATE	STREAM	LOCATION	HIGHWAY	FILE	SHEET	DRAWING
LEA	VMV	90-07-02	TJS	90-08-23					3 of 4	S-1537

ORIGINAL DRAWING APPROVED BY  
N. BOYD  
EXECUTIVE DIRECTOR  
BRIDGE ENGINEERING  
AUG 23, 1990

**Alberta** TRANSPORTATION AND UTILITIES  
BRIDGE ENGINEERING BRANCH

**PRESTRESSED CONCRETE**  
6 m TYPE SC-510  
INTERIOR AND CURB GIRDER LAYOUTS