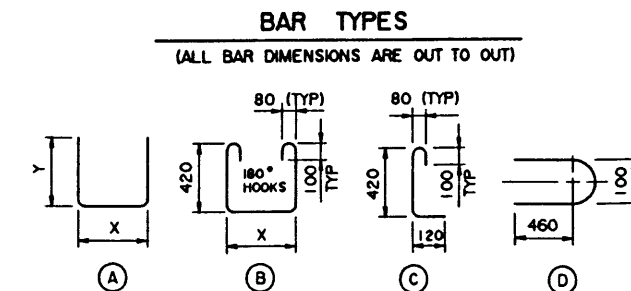
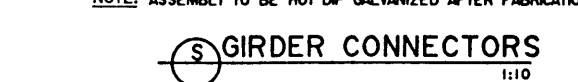
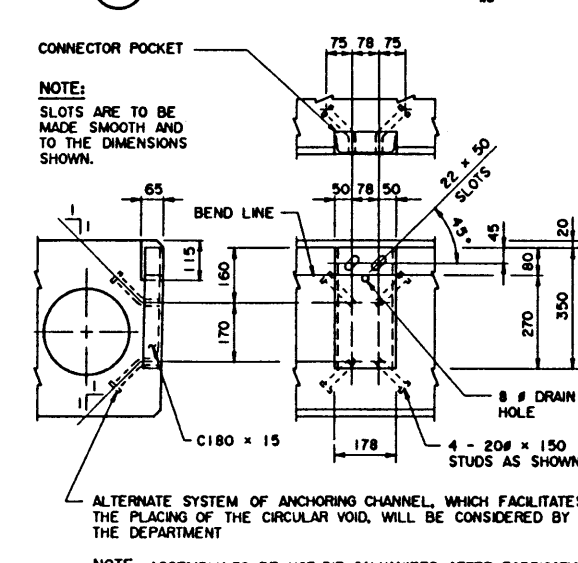
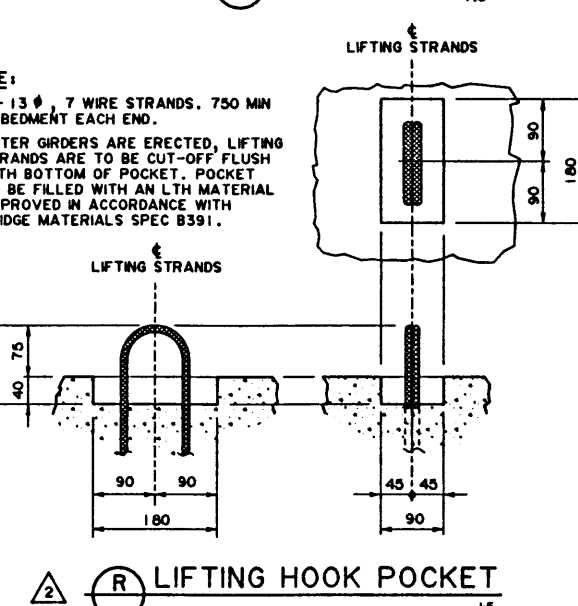
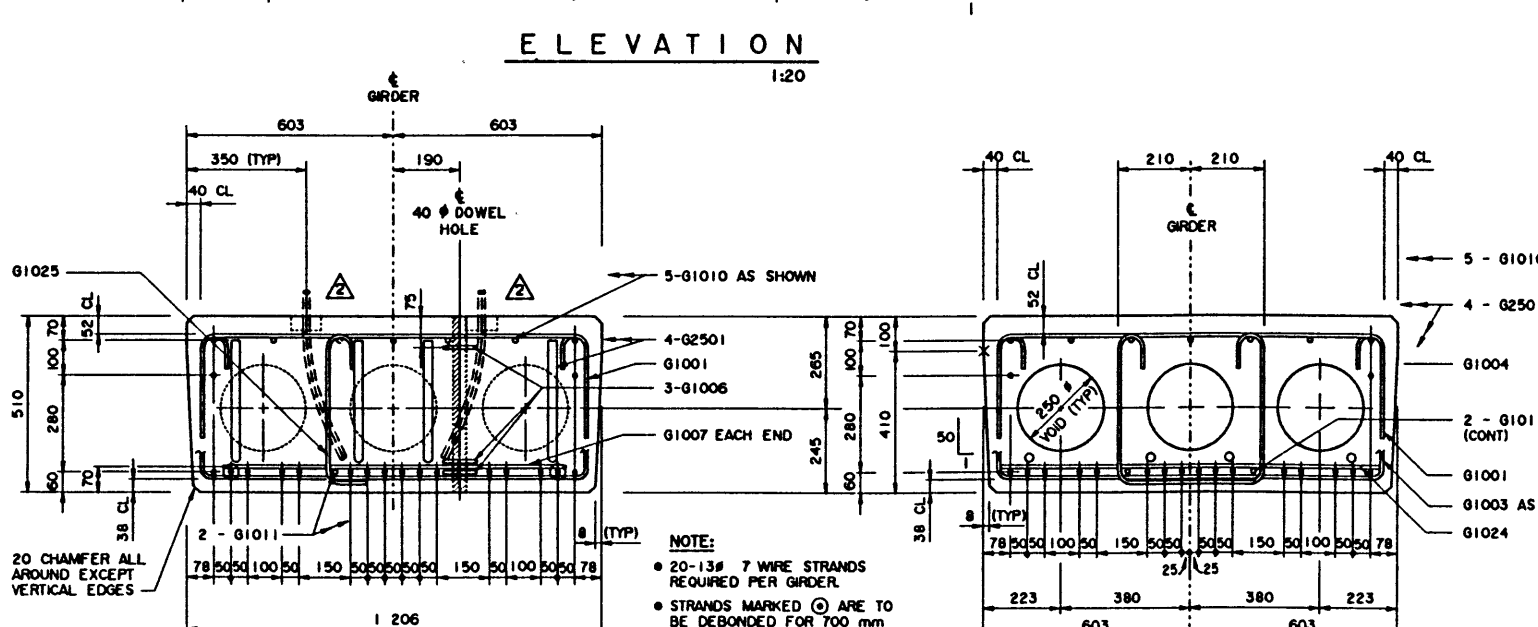
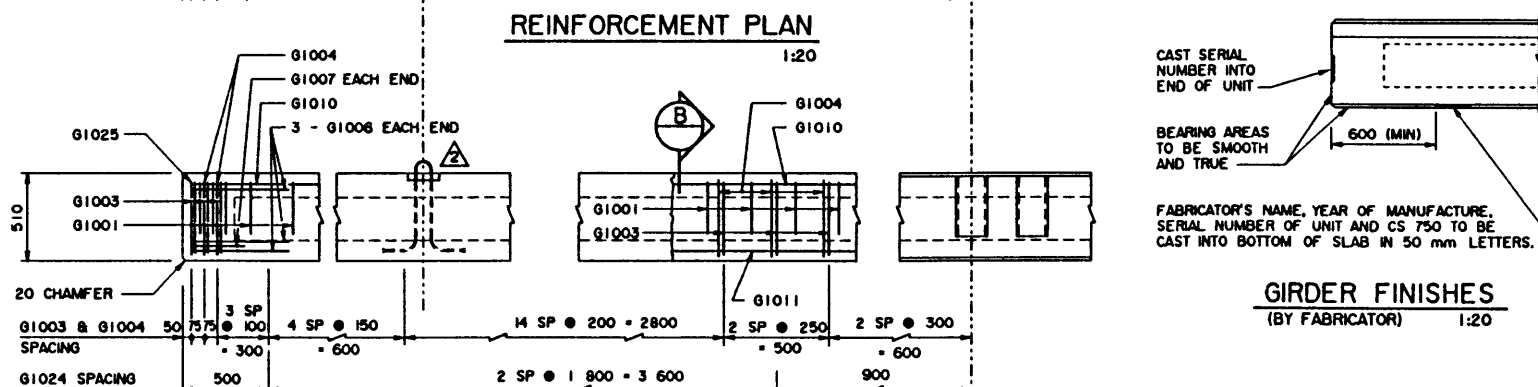
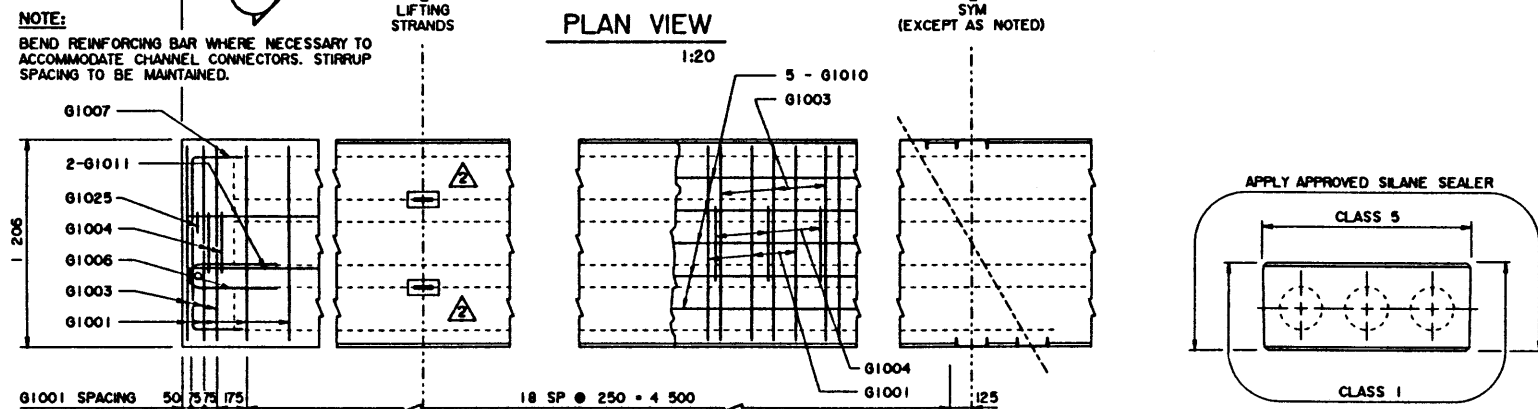


BAR LIST: FOR SQUARE GIRDER							
MARK	SIZE	NO	TYPE	X	Y	LENGTH	MASS
G1001	10	44	A	1 125	300	1 725	60
G1003	10	55	B	1 125		2 220	96
G1004	10	53	B	420		1 520	63
G1006	10	6	D			1 020	5
G1007	10	2	A	1 000	300	1 600	3
G1010	10	5	STR			9 900	39
G1011	10	2	STR			9 800	15
G1024	10	6	STR			1 100	5
G1025	10	2	C			670	1
G2501	25	4	A	9 850	350	10 550	166

TOTAL kg : 453



GENERAL NOTES

- ALL DRAWING REFERENCES ARE TO CURRENT DRAWINGS.
- DESIGN
- CAN/CSA-S6-88 SPECIFICATIONS EXCEPT AS MODIFIED BELOW:
 - ALLOWABLE TENSION AT MIDSPAN IS 40% OF MODULUS OF RUPTURE (SEVERE EXPOSURE CONDITIONS).
 - NO TENSION ALLOWED IN DECK SURFACE.
- LOADING:
 - LIVE LOAD - CAN/CSA-S6-88; CS-750 ONE WHEEL LINE PER GIRDER
 - DEAD LOAD - GIRDER = 0.93 t/m
 - WEARING SURFACE = 0.24 t/m

- MATERIALS
- CONCRETE SHALL CONTAIN SILICA FUME AND BE MADE OF LIGHTWEIGHT COARSE AGGREGATE AND NATURAL SAND FINES. UNIT WEIGHT OF SEMI-LIGHTWEIGHT CONCRETE SHALL BE 1920 kg/m³.
- 28 DAY CONCRETE STRENGTH - 35 MPa
- RELEASE STRENGTH - 28 MPa
- PRESTRESSING STEEL SHALL BE 13 # 7 WIRE LOW RELAXATION STRAND (fpu = 1860 MPa).
- REINFORCING STEEL SHALL BE GRADE 400W (YIELD STRENGTH OF GRADE 300 USED IN DESIGN TO ALLOW TACK WELDING OF SHEAR REINFORCEMENT).

- FABRICATION
- GIRDERS SHALL CONFORM TO THE CURRENT REQUIREMENTS OF THE SPECIFICATIONS FOR BRIDGE CONSTRUCTION SECTION 7 - PRECAST CONCRETE UNITS.
- FORCE IN PRESTRESSING STEEL:
 - INITIAL TENSIONING LOAD = 129 kN/STRAND
 - DESIGN LOAD AFTER LOSSES = 106 kN/STRAND
- ALL GALVANIZING SHALL CONFORM TO ASTM SPEC A123.
- BEND OR SHIFT REINFORCING WHERE REQUIRED TO CLEAR GIRDER CONNECTORS AND LIFTING HOOK ASSEMBLIES. STIRRUP SPACING IS TO BE MAINTAINED.

- ERECTION
- ANY FREE SPACE BETWEEN CONNECTORS SHALL BE FILLED WITH DROP-IN WASHERS.
- CALCULATED MASS OF ONE GIRDER IS 9.48 t.

WORK THESE DRAWINGS TOGETHER: S-1541, S-1542 AND S-1543

DESIGNED LEA		DRAWN VMV		DATE 90-07-02		CHECKED TJS		DATE 90-08-23		STREAM		LOCATION		HIGHWAY		FILE		SHEET 1 of 4		DRAWING S-1541	
-----------------	--	--------------	--	------------------	--	----------------	--	------------------	--	--------	--	----------	--	---------	--	------	--	-----------------	--	-------------------	--

ORIGINAL DRAWING APPROVED BY N. BOYD EXECUTIVE DIRECTOR BRIDGE ENGINEERING AUG 23, 1990		Alberta TRANSPORTATION AND UTILITIES BRIDGE ENGINEERING BRANCH PRESTRESSED CONCRETE 10 m TYPE SC-510 INTERIOR GIRDER	
---	--	--	--

REV	DATE	REVISIONS	BY
93-07-10		SPECIFICATION NOTE	LEA
94-04-05		LIFTING HOOK POCKET & BAR LIST	LEA
92-01-10		CONCRETE MATERIAL NOTE	DHQ