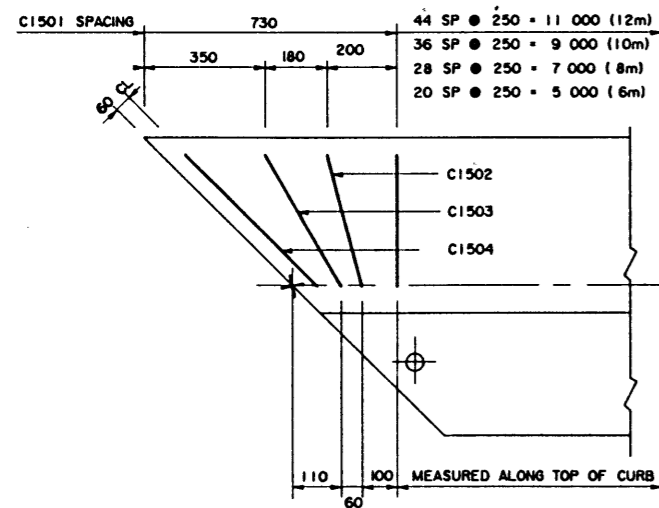
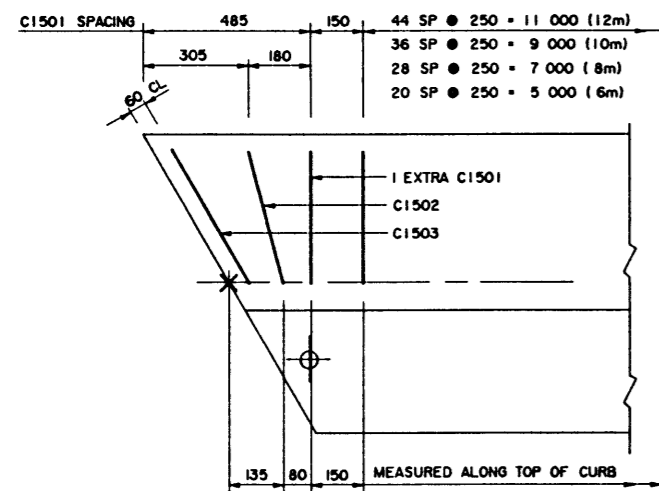
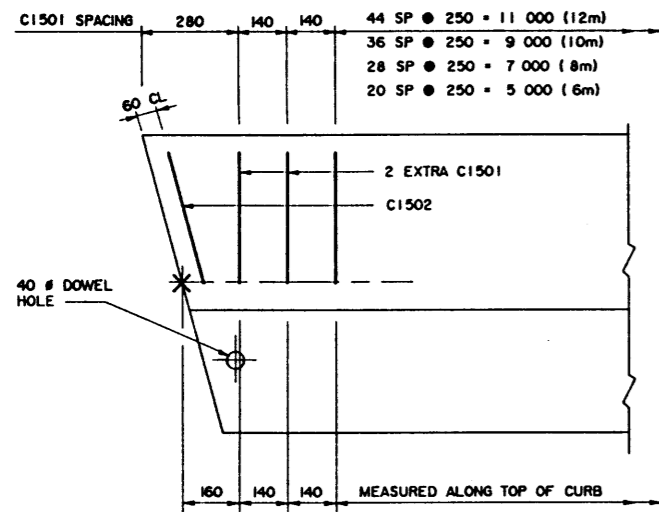
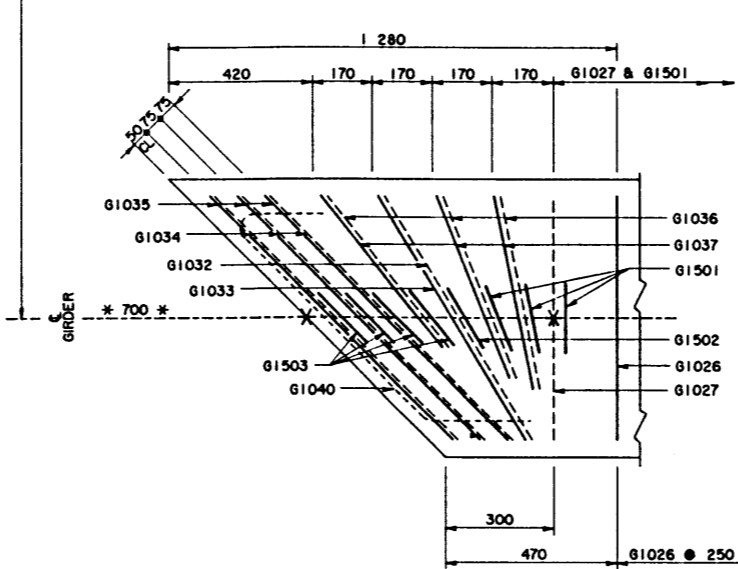
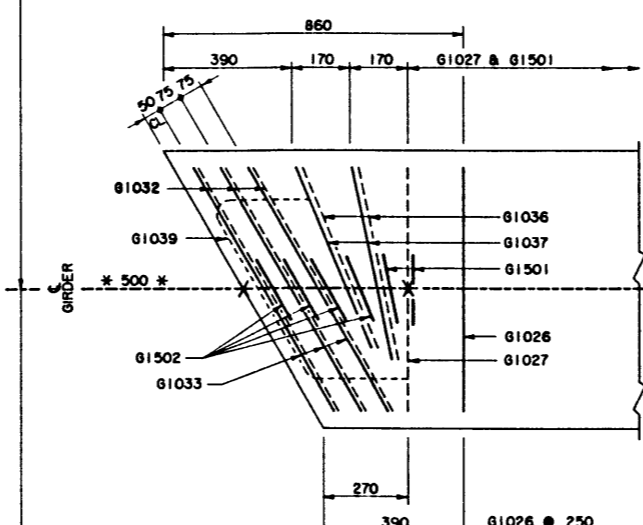
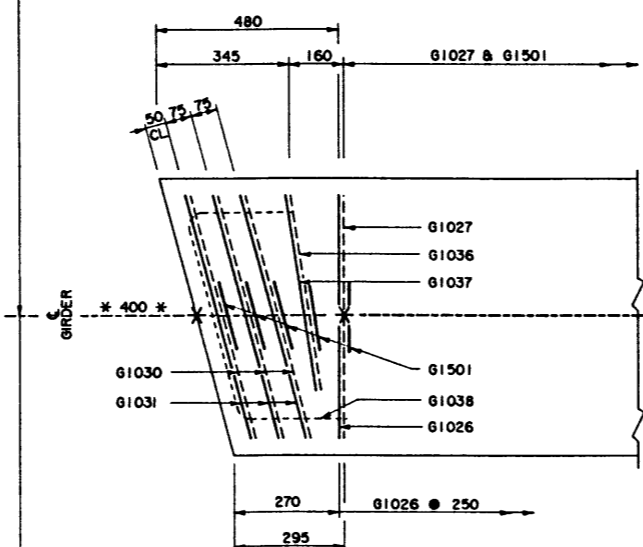


NOTE:
 • SHIFT REINFORCING BARS TO CLEAR ANCHOR BOLT ASSEMBLY IF REQUIRED.
 • SHIFT CURB BARS TO MISS LIFTING HOOK POCKETS WHERE REQUIRED.

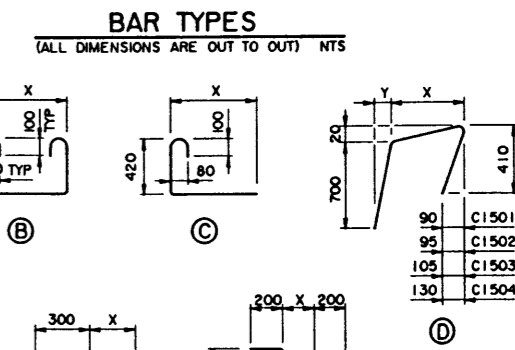


NOTE:
 • SHIFT SLAB BARS TO CLEAR LIFTING HOOK POCKETS WHERE REQUIRED.
 • SLAB BARS NOT DIMENSIONED ARE TIGHT AGAINST ADJACENT STIRRUP.
 • USE THIS ϵ DIMENSION TO IDENTIFY THIS STIRRUP (*) IN THE STIRRUP SERIES FOR A SQUARE ENDED UNIT.



BAR LIST: — SKEWED CURB GIRDER — EXTRA BARS FOR 2 ENDS

MARK	SIZE	TYPE	X	Y	LENGTH	15° SKEW		30° SKEW		45° SKEW	
						NO	MASS	NO	MASS	NO	MASS
C1501	15	D	380	80	1 455	4	9	2	5	2	5
C1502	15	D	390	85	1 465	2	5	2	5	2	5
C1503	15	D	440	95	1 515			2	5	2	5
C1504	15	D	535	115	1 625					2	5
G1030	10	B	750		1 850	6	9				
G1031	10	A	750		1 350	6	6				
G1032	10	B	840		1 940			6	9	2	3
G1033	10	A	840		1 440			6	7	2	2
G1034	10	B	1 025		2 125					6	10
G1035	10	A	1 025		1 625					6	8
G1036	10	C	600		1 150	2	2	4	4	6	5
G1037	10	E			900	2	1	4	3	6	4
G1038	10	F	160		1 220	2	2				
G1039	10	F	345		1 290			2	2		
G1040	10	F	600		1 450					2	2
G1501	15	G	85		1 140	8	14	2	3	4	7
G1502	15	G	100		1 145			8	14	2	3
G1503	15	G	120		1 150					8	14
TOTAL						kg	48	57	73		



CURB GIRDER REINFORCING BARS
 1:10

• WORK THIS DRAWING WITH THE RESPECTIVE CURB GIRDER DRAWING : S-1536, S-1539, S-1542 OR S-1545.

DESIGNED LEA				DRAWN VMV WS		DATE 90-07-02		CHECKED T.J. D.L.		DATE 10-08-23		APPROVED <i>mmbyd</i> EXECUTIVE DIRECTOR BRIDGE ENGINEERING DATE Aug 23 1990		Alberta TRANSPORTATION AND UTILITIES BRIDGE ENGINEERING BRANCH PRESTRESSED CONCRETE TYPE SC-510 SKEWED CURB GIRDER REINFORCING			
REV	DATE	REVISIONS				BY	STREAM	LOCATION	HIGHWAY	FILE	SHEET 4 of 4	DRAWING S-1547					