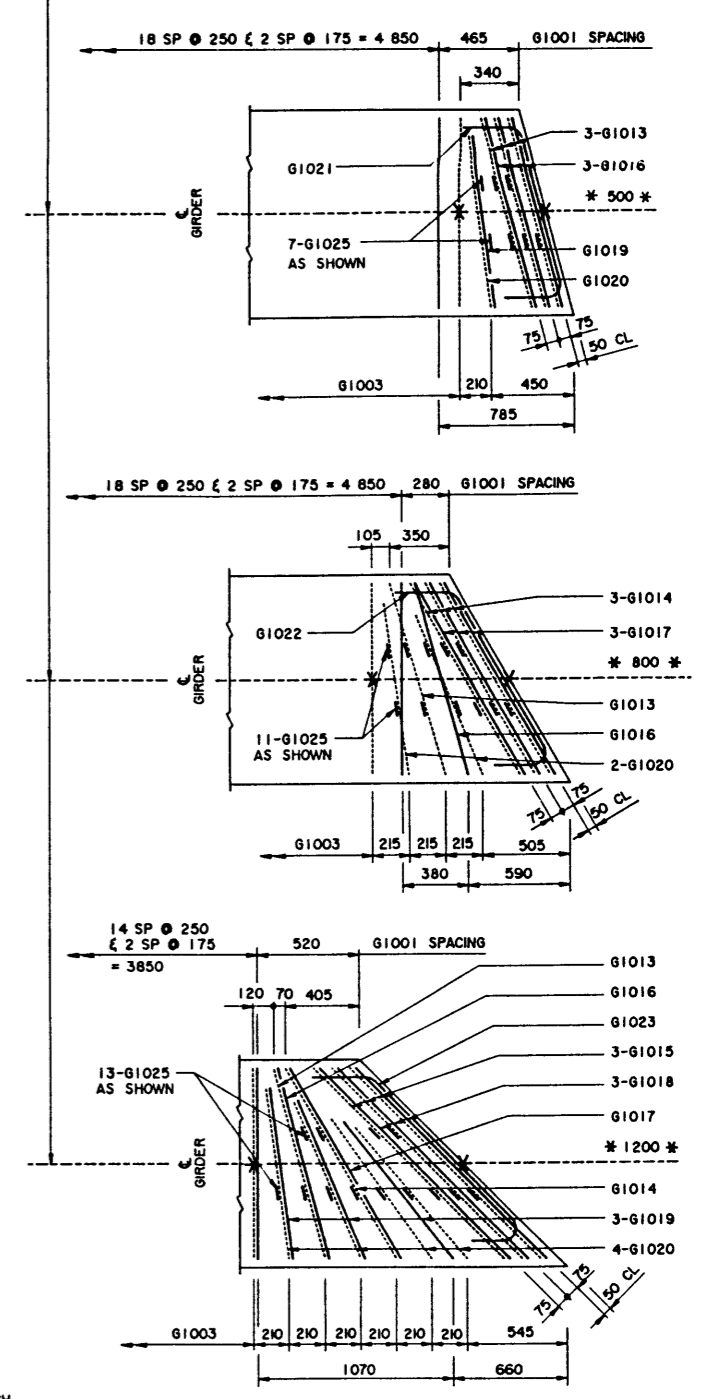


**NOTE:**  
 • SHIFT SLAB BARS TO CLEAR LIFTING HOOK POCKETS WHERE REQUIRED.  
 • SLAB BARS NOT DIMENSIONED ARE TIGHT AGAINST ADJACENT STIRRUP.  
 • USE THIS  $\epsilon$  DIMENSION TO IDENTIFY THIS STIRRUP (#) IN THE STIRRUP SERIES FOR A SQUARE ENDED UNIT.

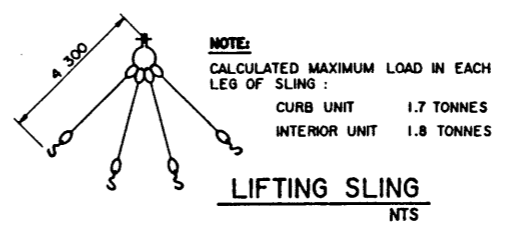
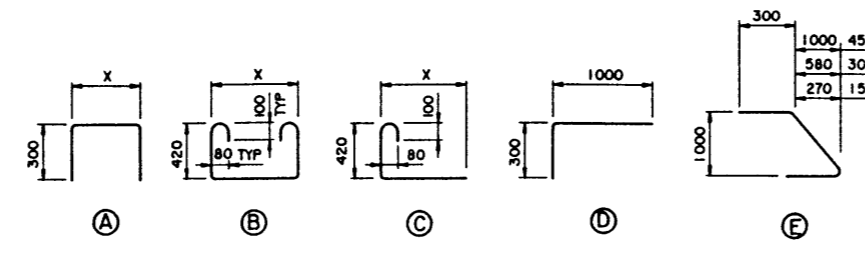


**INTERIOR GIRDER REINFORCING BARS**  
 1:20  
 • SKEWS ARE SHOWN RIGHT HAND FORWARD.  
 • LEFT HAND SKEWS ARE OPPOSITE AS SHOWN.

**BAR LIST:** — INTERIOR SKEWED GIRDER — EXTRA BARS FOR 2 ENDS

MARK	SIZE	TYPE	X	Y	LENGTH	15° SKEW		30° SKEW		45° SKEW	
						NO	MASS	NO	MASS	NO	MASS
G1013	10	B	1 165		2 260	6	11	2	4	2	4
G1014	10	B	1 300		2 390		6	11	2	2	4
G1015	10	B	1 590		2 680				6		13
G1016	10	A	1 165		1 765	6	8	2	3	2	3
G1017	10	A	1 300		1 900			6	9	2	3
G1018	10	A	1 590		2 190				6		10
G1019	10	D			1 280	2	2			6	6
G1020	10	C	1 000		1 520	2	2	4	5	8	9
G1021	10	E			1 585	2	2				
G1022	10	E			1 705			2	3		
G1023	10	E			1 965					2	3
G1025	10	C	120		670	14	7	22	12	26	14
TOTAL						kg	32		47		69

**BAR TYPES**  
 (ALL DIMENSIONS ARE OUT TO OUT) NTS



DESIGNED LEA		DRAWN VMV		DATE 93-08-19		CHECKED SBD		DATE 94-05-16		STREAM		LOCATION		HIGHWAY		FILE		SHEET 3 of 4		DRAWING S-1561	
APPROVED <i>[Signature]</i> EXECUTIVE DIRECTOR BRIDGE ENGINEERING										<b>Albera TRANSPORTATION AND UTILITIES</b> BRIDGE ENGINEERING BRANCH <b>PRESTRESSED CONCRETE</b> 6.10 m TYPE SC-510 <b>INTERIOR AND CURB GIRDER LAYOUTS</b>											
REV		DATE		REVISIONS		BY		DATE		DATE		DATE		DATE		DATE		DATE		DATE	
94-04-05				LIFTING HOOK POCKET SHAPE & DIMENSIONS		LEA															
93-08-31				LIFTING STRAND DIMENSION		LEA															