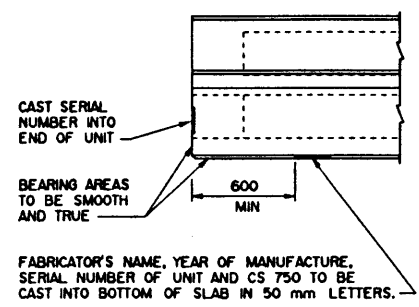
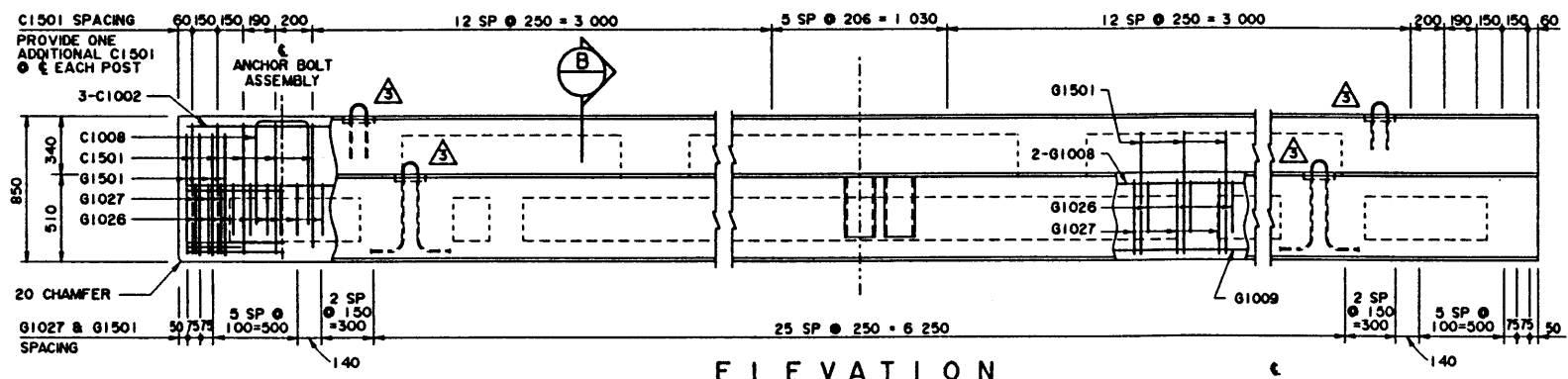
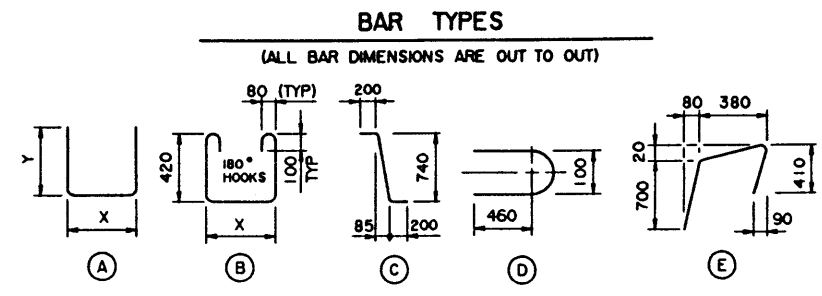
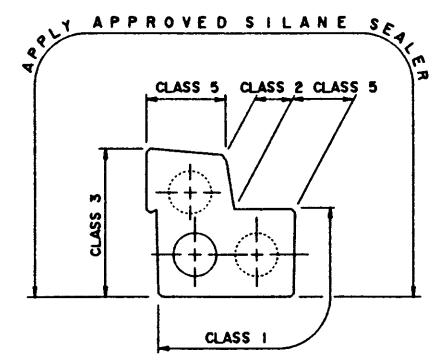
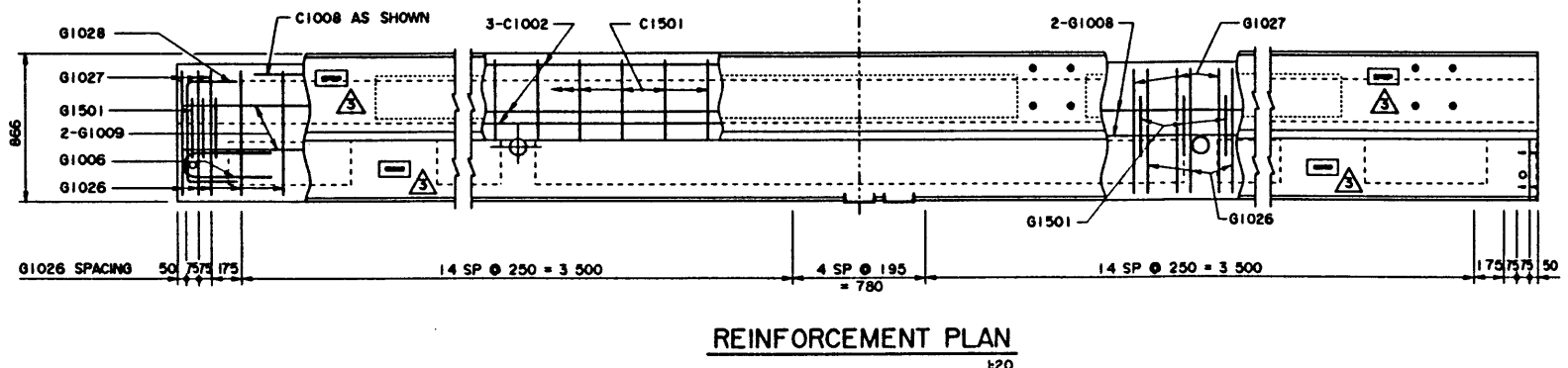
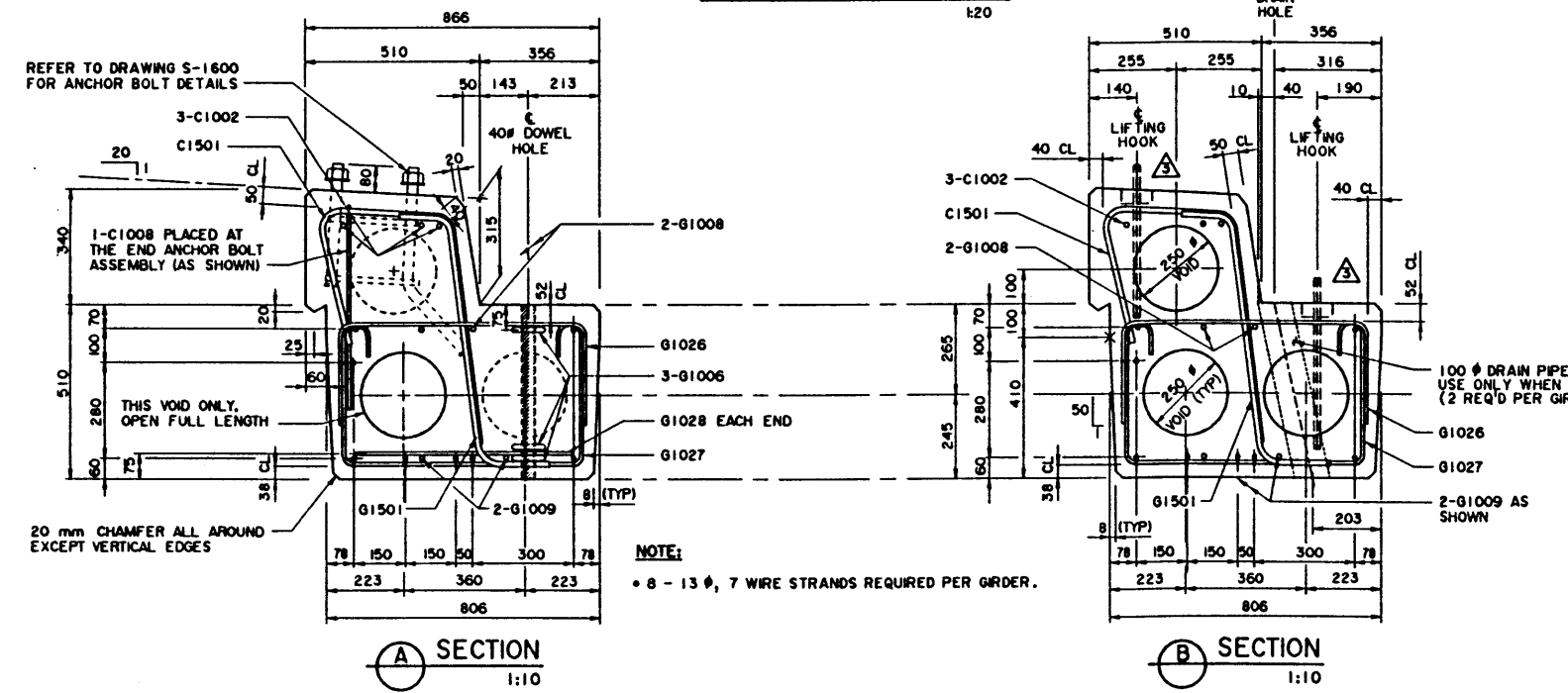


BAR LIST: FOR SQUARE GIRDER								
MARK	SIZE	NO	TYPE	X	Y	LENGTH	MASS	
C1002	10	3	STR			8 430	20	
C1008	10	2	A	310	600	1 510	2	
C1501	15	42	E			1 455	48	
G1006	10	6	D			1 080	5	
G1008	10	2	STR			8 430	13	
G1009	10	2	STR			8 330	13	
G1026	10	39	A	725	300	1 325	41	
G1027	10	46	B	725		1 820	66	
G1028	10	2	A	600	300	1 200	2	
G1501	15	46	C			1 140	82	
TOTAL kg:							292	



- ALL DRAWING REFERENCES ARE TO CURRENT DRAWINGS.
- DESIGN**
- CAN/CSA-S6-88 SPECIFICATIONS EXCEPT AS MODIFIED BELOW:
 - ALLOWABLE TENSION AT MIDSPAN IS 40% OF MODULUS OF RUPTURE (SEVERE EXPOSURE CONDITIONS).
 - NO TENSION ALLOWED IN DECK SURFACE.
- LOADING**
- LIVE LOAD - CAN/CSA-S6-88; CS-750
0.8 WHEEL LINES PER GIRDER
 - DEAD LOAD - GIRDER = 0.86 t/m
WEARING SURFACE = 0.09 t/m
- MATERIALS**
- CONCRETE SHALL CONTAIN SILICA FUME AND BE MADE OF LIGHTWEIGHT COARSE AGGREGATE AND NATURAL SAND FINES. UNIT WEIGHT OF SEMI-LIGHTWEIGHT CONCRETE SHALL BE 1920 kg/m³.
 - 28 DAY CONCRETE STRENGTH - 35 MPa
 - RELEASE STRENGTH - 28 MPa
 - PRESTRESSING STEEL SHALL BE 13 #, 7 WIRE LOW RELAXATION STRAND (f_{pu} = 1860 MPa).
 - REINFORCING STEEL SHALL BE GRADE 400W (YIELD STRENGTH OF GRADE 300 USED IN DESIGN TO ALLOW TACK WELDING OF SHEAR REINFORCEMENT).
- FABRICATION**
- GIRDERS SHALL CONFORM TO THE CURRENT REQUIREMENTS OF THE SPECIFICATIONS FOR BRIDGE CONSTRUCTION SECTION 7 - PRECAST CONCRETE UNITS.
 - FORCE IN PRESTRESSING STEEL:
 - INITIAL TENSIONING LOAD = 129 kN/STRAND
 - DESIGN LOAD AFTER LOSSES = 113 kN/STRAND
 - CURB SHALL BE CAST MONOLITHICALLY WITH GIRDER.
 - ANCHOR BOLT ASSEMBLIES SHALL BE CAST IN GIRDER AT SPACINGS SHOWN ON DRAWING S-1564.
 - ALL GALVANIZING SHALL CONFORM TO ASTM SPEC A123 OR A153 AS APPLICABLE.
- ERECTOR**
- ANY FREE SPACE BETWEEN CONNECTORS SHALL BE FILLED WITH DROP-IN WASHERS.
 - CALCULATED MASS OF ONE GIRDER IS 7.8t.



<table border="1"> <tr> <th>REV</th> <th>DATE</th> <th>REVISIONS</th> <th>BY</th> </tr> <tr> <td>95-07-10</td> <td></td> <td>SPECIFICATION NOTE</td> <td>LEA</td> </tr> <tr> <td>94-04-05</td> <td></td> <td>LIFTING HOOK POCKET</td> <td>LEA</td> </tr> <tr> <td>93-12-13</td> <td></td> <td>BAR LENGTH REVISED</td> <td>SBD</td> </tr> <tr> <td>93-08-27</td> <td></td> <td>CONNECTOR AND LIFTING HOOK LOCATION NOTE, BAR LIST REVISED</td> <td>LEA</td> </tr> </table>	REV	DATE	REVISIONS	BY	95-07-10		SPECIFICATION NOTE	LEA	94-04-05		LIFTING HOOK POCKET	LEA	93-12-13		BAR LENGTH REVISED	SBD	93-08-27		CONNECTOR AND LIFTING HOOK LOCATION NOTE, BAR LIST REVISED	LEA	<p>ORIGINAL DRAWING APPROVED BY</p> <p>J. RAMOTAR</p> <p>EXECUTIVE DIRECTOR BRIDGE ENGINEERING</p> <p>MAY 24, 1994</p>	<p>Alberta TRANSPORTATION AND UTILITIES BRIDGE ENGINEERING BRANCH</p> <p>PRESTRESSED CONCRETE 8.53 m TYPE SC-510 CURB GIRDER</p>
REV	DATE	REVISIONS	BY																			
95-07-10		SPECIFICATION NOTE	LEA																			
94-04-05		LIFTING HOOK POCKET	LEA																			
93-12-13		BAR LENGTH REVISED	SBD																			
93-08-27		CONNECTOR AND LIFTING HOOK LOCATION NOTE, BAR LIST REVISED	LEA																			
DESIGNED	DRAWN	DATE	CHECKED	DATE	STREAM	LOCATION	HIGHWAY	FILE	SHEET	DRAWING												
LEA	VMV	93-08-19	SBD	94-05-16					2 of 4	S-1563												