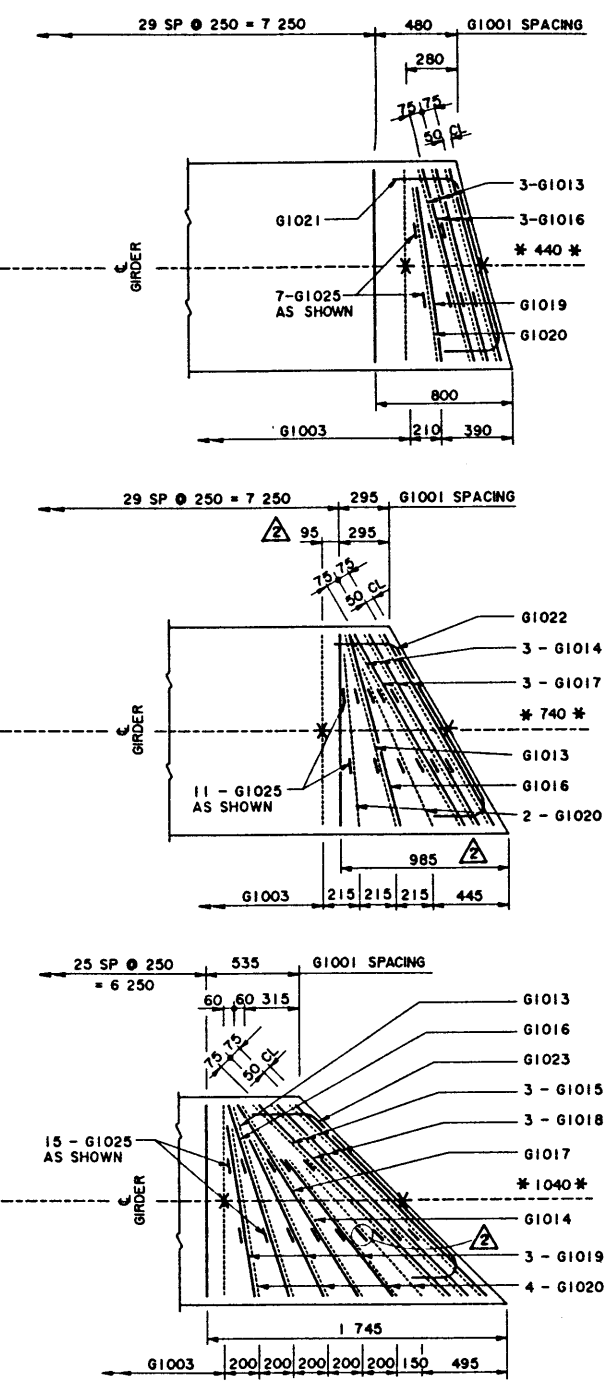
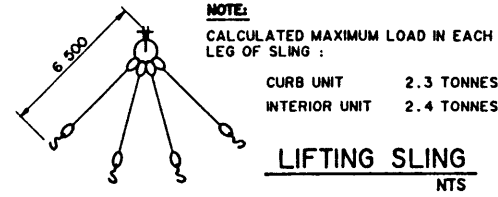
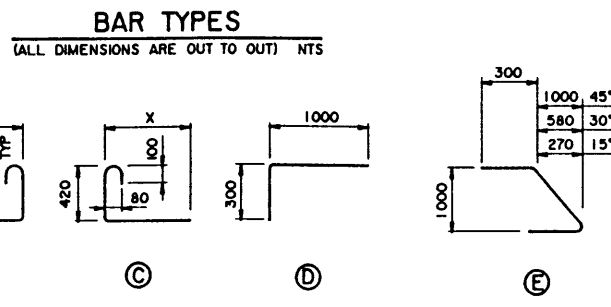


NOTE:
 • SHIFT SLAB BARS TO CLEAR LIFTING HOOK POCKETS WHERE REQUIRED.
 • SLAB BARS NOT DIMENSIONED ARE TIGHT AGAINST ADJACENT STIRRUP.
 • USE THIS ϵ DIMENSION TO IDENTIFY THIS STIRRUP (#) IN THE STIRRUP SERIES FOR A SQUARE ENDED UNIT.



BAR LIST: — INTERIOR SKEWED GIRDER — EXTRA BARS FOR 2 ENDS

MARK	SIZE	TYPE	X	Y	LENGTH	15° SKEW		30° SKEW		45° SKEW		
						NO	MASS	NO	MASS	NO	MASS	
G1013	10	B	1165		2260	6	11	2	4	2	4	
G1014	10	B	1300		2390			6	11	2	4	
G1015	10	B	1590		2680					6	13	
G1016	10	A	1165		1765	6	8	2	3	2	3	
G1017	10	A	1300		1900			6	9	2	3	
G1018	10	A	1590		2190					6	10	
G1019	10	D			1280	2	2			6	6	
G1020	10	C	1000		1520	2	2	4	5	8	9	
G1021	10	E			1585	2	2					
G1022	10	E			1705			2	3			
G1023	10	E			1965					2	3	
G1025	10	C	120		670	14	7	22	12	30	16	
TOTAL						kg	32	47			71	



INTERIOR GIRDER REINFORCING BARS
 1:20
 • SKEWS ARE SHOWN RIGHT HAND FORWARD.
 • LEFT HAND SKEWS ARE OPPOSITE AS SHOWN.

DESIGNED LEA		DRAWN VMV	DATE 93-08-19	CHECKED SBD	DATE 94-05-16	APPROVED <i>Stevenson</i> EXECUTIVE DIRECTOR BRIDGE ENGINEERING	Albarta TRANSPORTATION AND UTILITIES BRIDGE ENGINEERING BRANCH PRESTRESSED CONCRETE 8.53 m TYPE SC-510 INTERIOR AND CURB GIRDER LAYOUTS			
REV	DATE	REVISIONS		BY	DATE	DATE May 24/94				
94-04-05		LIFTING HOOK POCKET SHAPE REVISED		LEA						
93-12-13		G1025 ADDED; DIMENSIONS REVISED		SBD						
93-08-27		GEN REVISION-SKEW DETAILS ADDED		LEA						
DESIGNED	DRAWN	DATE	CHECKED	DATE	STREAM	LOCATION	HIGHWAY	FILE	SHEET	DRAWING
LEA	VMV	93-08-19	SBD	94-05-16					3 of 4	S-1564