

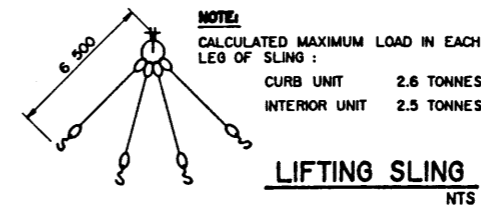
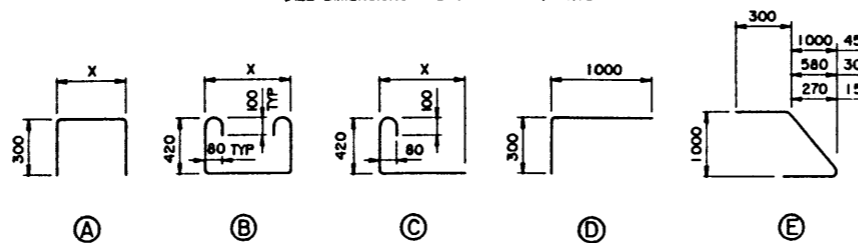
**CURB GIRDER**  
1:50

**INTERIOR GIRDER**  
1:50

**BAR LIST: — INTERIOR SKEWED GIRDER — EXTRA BARS FOR 2 ENDS**

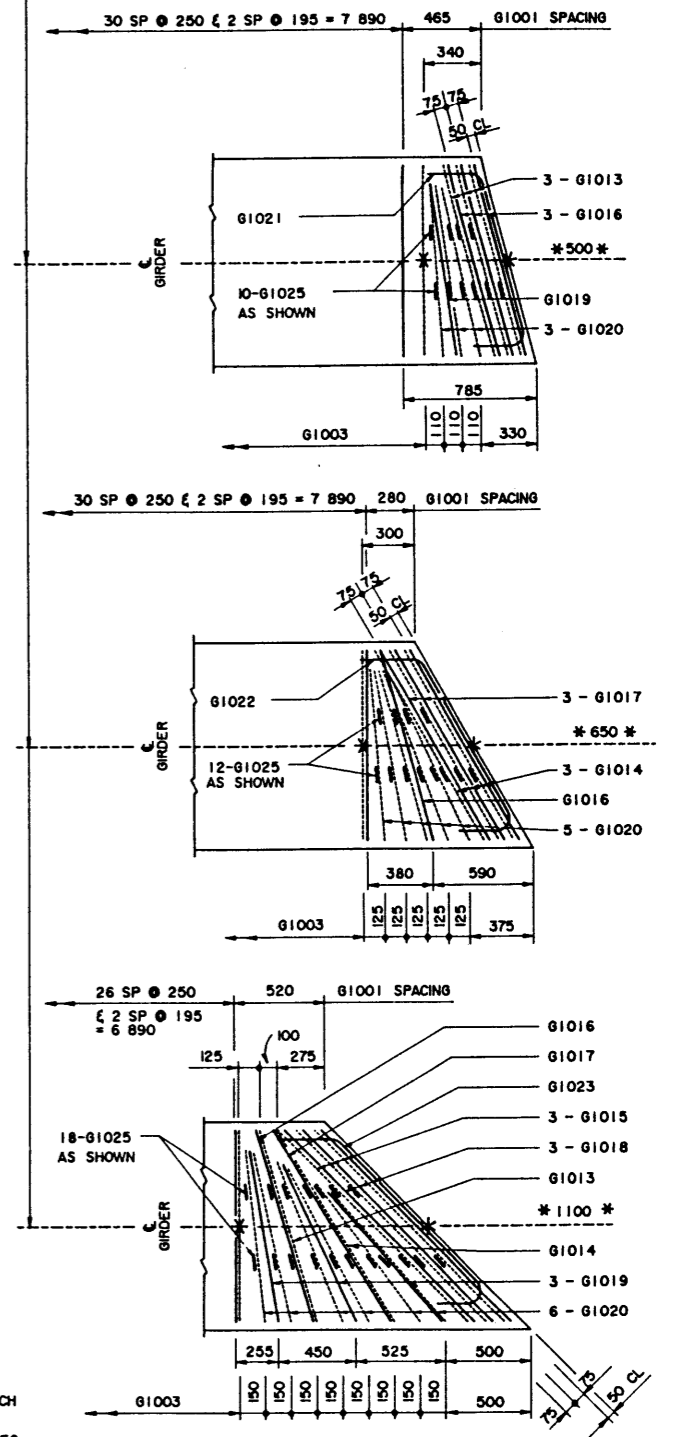
MARK	SIZE	TYPE	X	Y	LENGTH	15° SKEW		30° SKEW		45° SKEW	
						NO	MASS	NO	MASS	NO	MASS
G1013	10	B	1 165		2 260	6	11			2	4
G1014	10	B	1 300		2 390			6	11	2	4
G1015	10	B	1 590		2 680					6	13
G1016	10	A	1 165		1 765	6	8	2	3	2	3
G1017	10	A	1 300		1 900			6	9	2	3
G1018	10	A	1 590		2 190					6	10
G1019	10	D			1 280	2	2			6	6
G1020	10	C	1 000		1 520	6	7	10	12	12	14
G1021	10	E			1 585	2	2				
G1022	10	E			1 705			2	3		
G1023	10	E			1 965					2	3
G1025	10	C	120		670	20	11	24	13	36	19
<b>TOTAL kg</b>						41		51		79	

**BAR TYPES**  
(ALL DIMENSIONS ARE OUT TO OUT) NTS



**NOTE:**

- SHIFT SLAB BARS TO CLEAR LIFTING HOOK POCKETS WHERE REQUIRED.
- SLAB BARS NOT DIMENSIONED ARE TIGHT AGAINST ADJACENT STIRRUP.
- USE THIS  $\epsilon$  DIMENSION TO IDENTIFY THIS STIRRUP (#) IN THE STIRRUP SERIES FOR A SQUARE ENDED UNIT.



**INTERIOR GIRDER REINFORCING BARS**  
1:20

- SKEWS ARE SHOWN RIGHT HAND FORWARD.
- LEFT HAND SKEWS ARE OPPOSITE AS SHOWN.

DESIGNED R. O. LEA		DATE 94-03-15	CHECKED S. B. D.	DATE 94-05-16	BY	APPROVED  EXECUTIVE DIRECTOR BRIDGE ENGINEERING	DATE May 24/94
STREAM	LOCATION	HIGHWAY	FILE	SHEET 3 of 4	DRAWING S-1567		