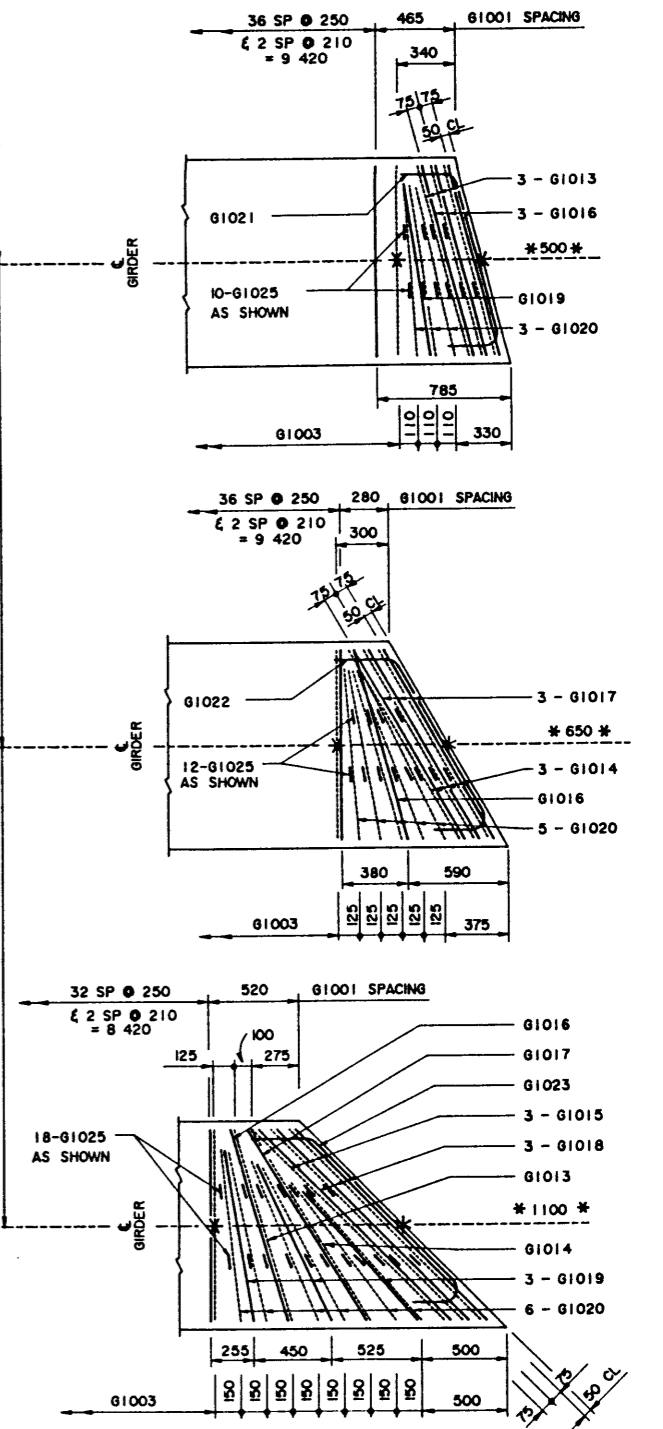


CURB GIRDER Δ
1:50

INTERIOR GIRDER Δ
1:50

NOTE:
 • SHIFT SLAB BARS TO CLEAR LIFTING HOOK POCKETS WHERE REQUIRED.
 • SLAB BARS NOT DIMENSIONED ARE TIGHT AGAINST ADJACENT STIRRUP.
 • USE THIS ϵ DIMENSION TO IDENTIFY THIS STIRRUP (#) IN THE STIRRUP SERIES FOR A SQUARE ENDED UNIT.



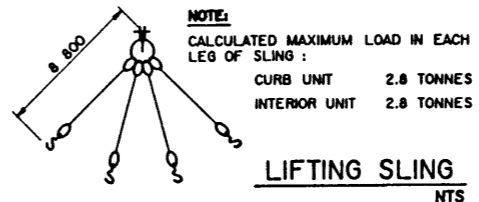
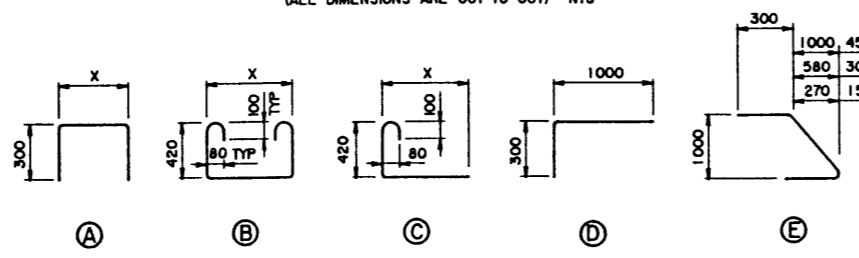
INTERIOR GIRDER REINFORCING BARS
1:20

• SKEWS ARE SHOWN RIGHT HAND FORWARD.
 • LEFT HAND SKEWS ARE OPPOSITE AS SHOWN.

BAR LIST: — INTERIOR SKEWED GIRDER — EXTRA BARS FOR 2 ENDS

MARK	SIZE	TYPE	X	Y	LENGTH	15° SKEW		30° SKEW		45° SKEW	
						NO	MASS	NO	MASS	NO	MASS
G1013	10	B	1 165		2 260	6	11			2	4
G1014	10	B	1 300		2 390			6	11	2	4
G1015	10	B	1 590		2 680					6	13
G1016	10	A	1 165		1 765	6	8	2	3	2	3
G1017	10	A	1 300		1 900			6	9	2	3
G1018	10	A	1 590		2 190					6	10
G1019	10	D			1 280	2	2			6	6
G1020	10	C	1 000		1 520	6	7	10	12	12	14
G1021	10	E			1 585	2	2				
G1022	10	E			1 705			2	3		
G1023	10	E			1 965					2	3
G1025	10	C	120		670	20	11	24	13	36	19
TOTAL kg						41		51		79	

BAR TYPES
(ALL DIMENSIONS ARE OUT TO OUT) NTS



REVISIONS

REV	DATE	REVISIONS	BY
1	93-09-17	94-04-05 LIFTING HOOK POCKET SHAPE REVISED	LEA

DESIGNED P. D. LEA
DRAWN VMV MIK
CHECKED S. D. SBD
DATE 93-09-17
DATE 94-05-16

APPROVED
[Signature]
 EXECUTIVE DIRECTOR
 BRIDGE ENGINEERING

Alberta TRANSPORTATION AND UTILITIES
 BRIDGE ENGINEERING BRANCH

PRESTRESSED CONCRETE
 10.67 m TYPE SC-510
 INTERIOR AND CURB GIRDER LAYOUTS

DATE: *My 24/94*

DESIGN	LOCATION	HIGHWAY	FILE	SHEET	DRAWING
94-04-05				3 of 4	S-1573