

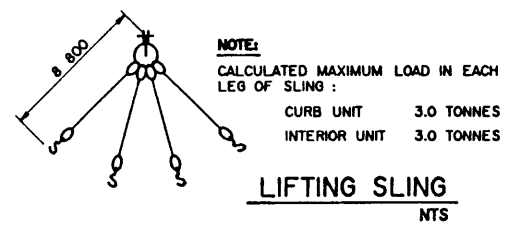
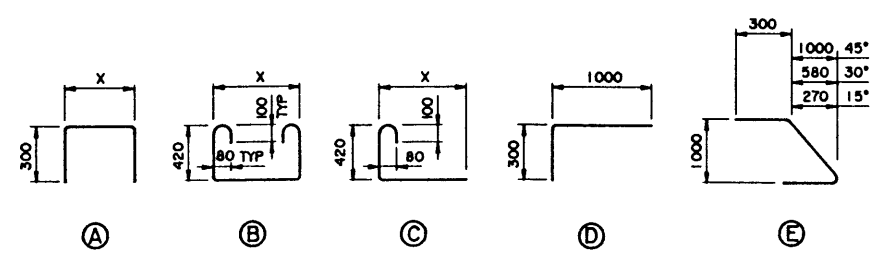
CURB GIRDER
1:50

INTERIOR GIRDER
1:50

BAR LIST: — INTERIOR SKEWED GIRDER — EXTRA BARS FOR 2 ENDS

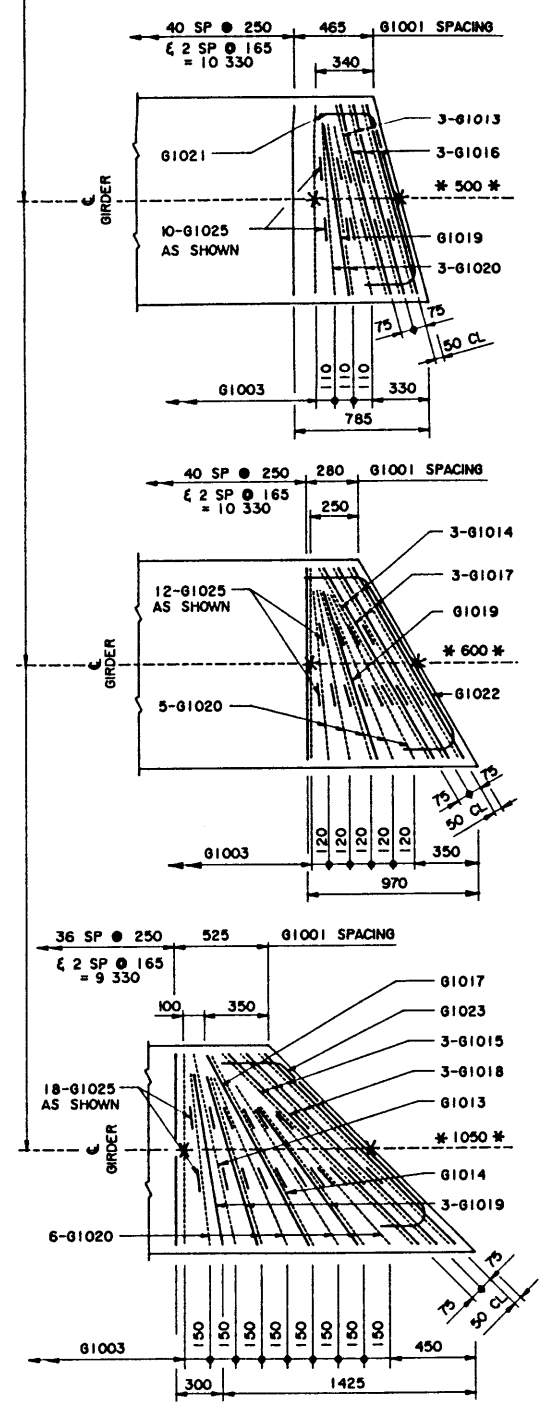
MARK	SIZE	TYPE	X	Y	LENGTH	15° SKEW		30° SKEW		45° SKEW	
						NO	MASS	NO	MASS	NO	MASS
G1013	10	B	1 165		2 260	6	11			2	4
G1014	10	B	1 300		2 390			6	11	2	4
G1015	10	B	1 590		2 680					6	13
G1016	10	A	1 165		1 765	6	8				
G1017	10	A	1 300		1 900			6	9	2	3
G1018	10	A	1 590		2 190					6	10
G1019	10	D			1 280	2	2	2	2	6	6
G1020	10	C	1 000		1 520	6	7	10	12	12	14
G1021	10	E			1 585	2	2				
G1022	10	E			1 705			2	3		
G1023	10	E			1 965					2	3
G1025	10	C	120		670	20	11	24	13	36	19
TOTAL						kg	41	50			76

BAR TYPES
(ALL DIMENSIONS ARE OUT TO OUT) NTS



LIFTING SLING
NTS

NOTE:
 • SHIFT SLAB BARS TO CLEAR LIFTING HOOK POCKETS WHERE REQUIRED.
 • SLAB BARS NOT DIMENSIONED ARE TIGHT AGAINST ADJACENT STIRRUP.
 • USE THIS ϵ DIMENSION TO IDENTIFY THIS STIRRUP (#) IN THE STIRRUP SERIES FOR A SQUARE ENDED UNIT.



INTERIOR GIRDER REINFORCING BARS
1:20
 • SKEWS ARE SHOWN RIGHT HAND FORWARD.
 • LEFT HAND SKEWS ARE OPPOSITE AS SHOWN.

DESIGNED LEA		DRAWN VMV		DATE 94-04-21		CHECKED SBD		DATE 94-05-16		STREAM		LOCATION		HIGHWAY		FILE		SHEET 3 of 4		DRAWING S-1576	
APPROVED EXECUTIVE DIRECTOR BRIDGE ENGINEERING										Alberta TRANSPORTATION AND UTILITIES BRIDGE ENGINEERING BRANCH PRESTRESSED CONCRETE 11.58 m TYPE SC-510 INTERIOR AND CURB GIRDER LAYOUTS											
REV		DATE		REVISIONS		BY		DATE		DATE		DATE		DATE		DATE		DATE		DATE	