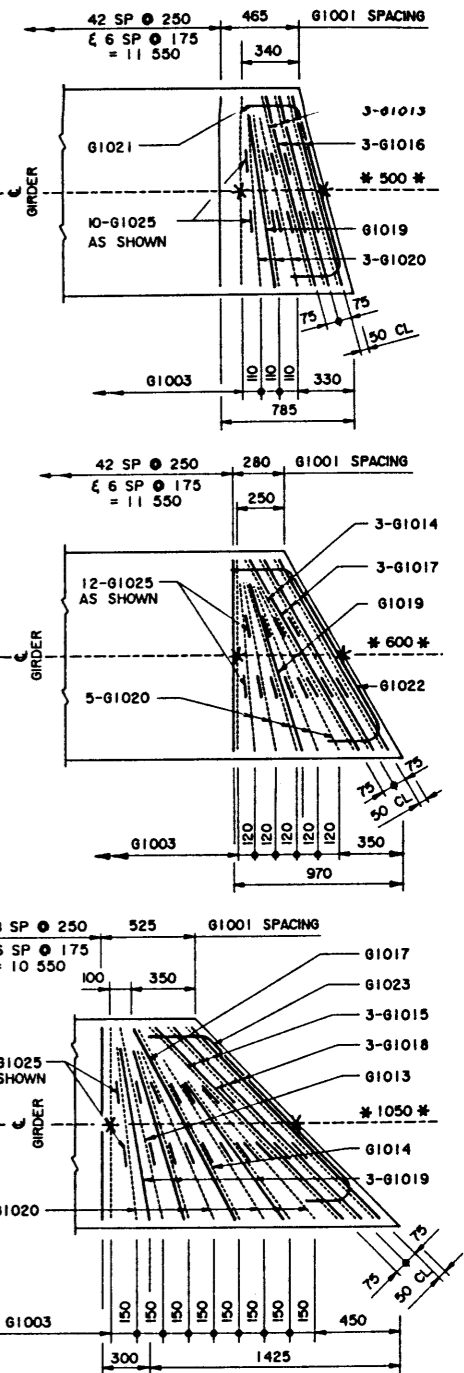


NOTE:

- SHIFT SLAB BARS TO CLEAR LIFTING HOOK POCKETS WHERE REQUIRED.
- SLAB BARS NOT DIMENSIONED ARE TIGHT AGAINST ADJACENT STIRRUP.
- USE THIS ϵ DIMENSION TO IDENTIFY THIS STIRRUP (#) IN THE STIRRUP SERIES FOR A SQUARE ENDED UNIT.

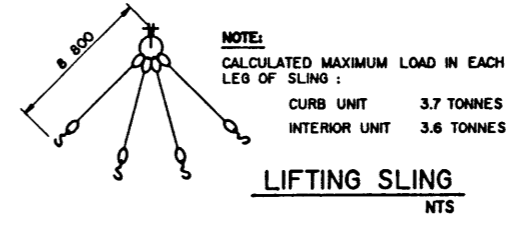
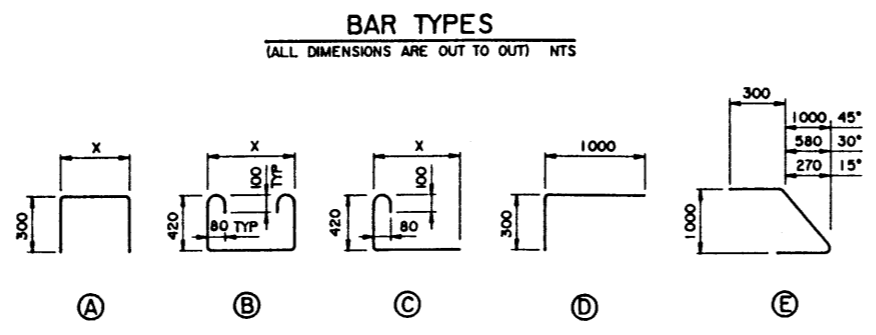


INTERIOR GIRDER REINFORCING BARS 1:20

- SKEWS ARE SHOWN RIGHT HAND FORWARD.
- LEFT HAND SKEWS ARE OPPOSITE AS SHOWN.

BAR LIST: — INTERIOR SKEWED GIRDER — EXTRA BARS FOR 2 ENDS

MARK	SIZE	TYPE	X	Y	LENGTH	15° SKEW		30° SKEW		45° SKEW		
						NO	MASS	NO	MASS	NO	MASS	
G1013	10	B	1 165		2 260	6	11			2	4	
G1014	10	B	1 300		2 390			6	11	2	4	
G1015	10	B	1 590		2 680					6	13	
G1016	10	A	1 165		1 765	6	8					
G1017	10	A	1 300		1 900			6	9	2	3	
G1018	10	A	1 590		2 190					6	10	
G1019	10	D			1 280	2	2	2	2	6	6	
G1020	10	C	1 000		1 520	6	7	10	12	12	14	
G1021	10	E			1 585	2	2					
G1022	10	E			1 705			2	3			
G1023	10	E			1 965					2	3	
G1025	10	C	120		670	20	11	24	13	36	19	
TOTAL						kg	41	50				76



DESIGNED LEA	DRAWN VMV MIK	DATE 94-03-16	CHECKED SDB SBD	DATE 94-05-16	STREAM	LOCATION	HIGHWAY	FILE	SHEET 3 of 4	DRAWING S-1583
-----------------	---------------------	------------------	-----------------------	------------------	--------	----------	---------	------	-----------------	-------------------

APPROVED
EXECUTIVE DIRECTOR
BRIDGE ENGINEERING
DATE: May 24/94

Albarta TRANSPORTATION AND UTILITIES
BRIDGE ENGINEERING BRANCH

PRESTRESSED CONCRETE
12.80 m TYPE SC-510
INTERIOR AND CURB GIRDER LAYOUTS