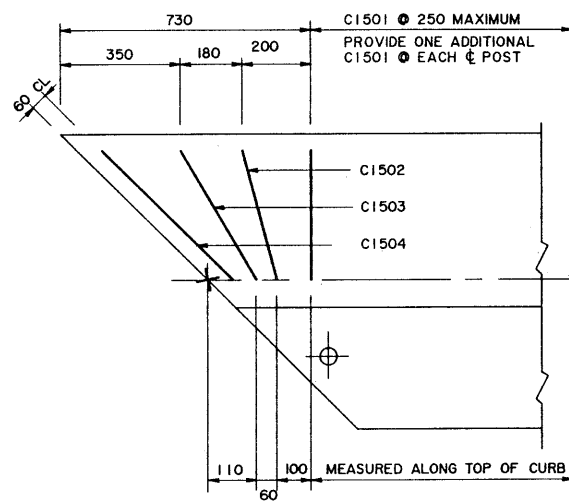
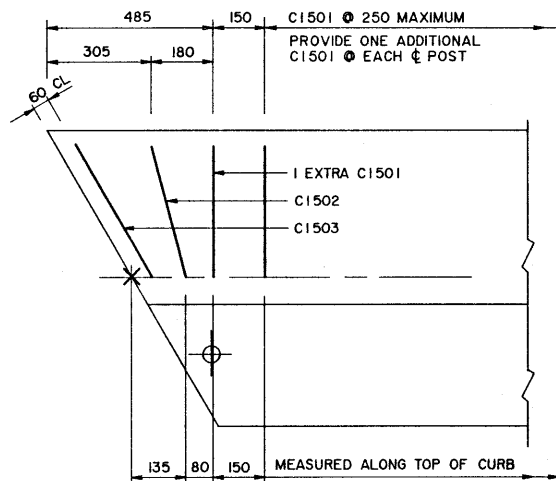
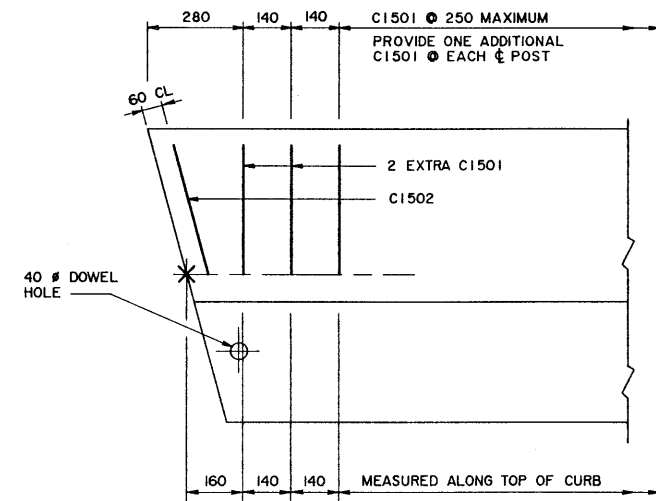


**NOTE:**

- SHIFT REINFORCING BARS TO CLEAR ANCHOR BOLT ASSEMBLY IF REQUIRED.
- SHIFT CURB BARS TO MISS LIFTING HOOK POCKETS WHERE REQUIRED.

**NOTE:**

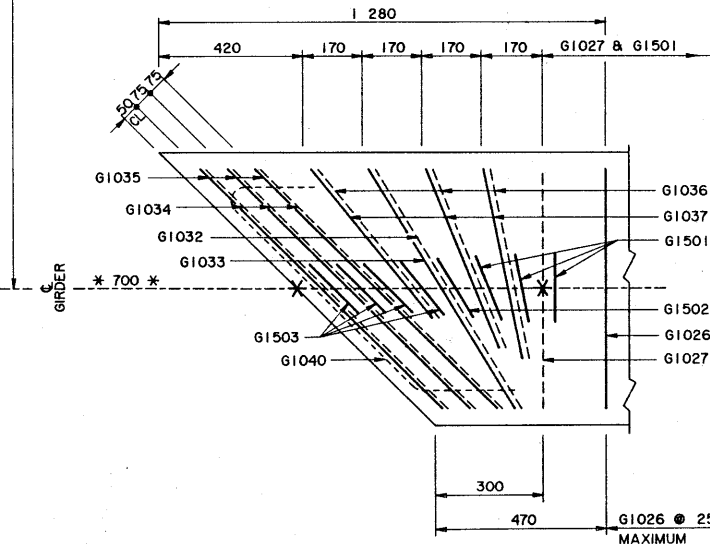
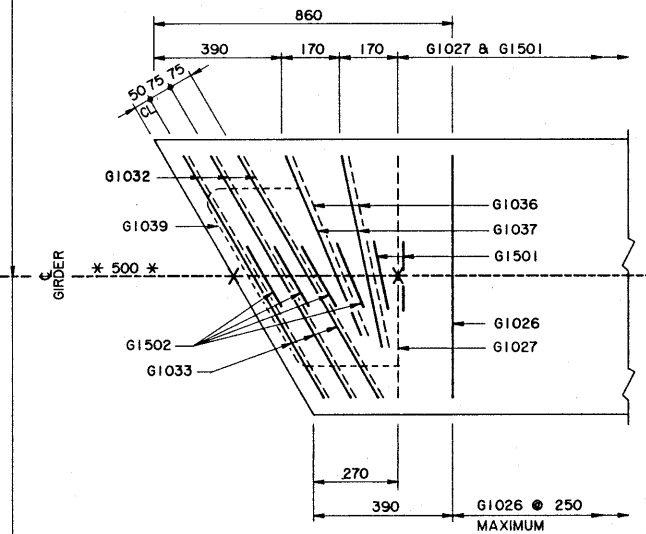
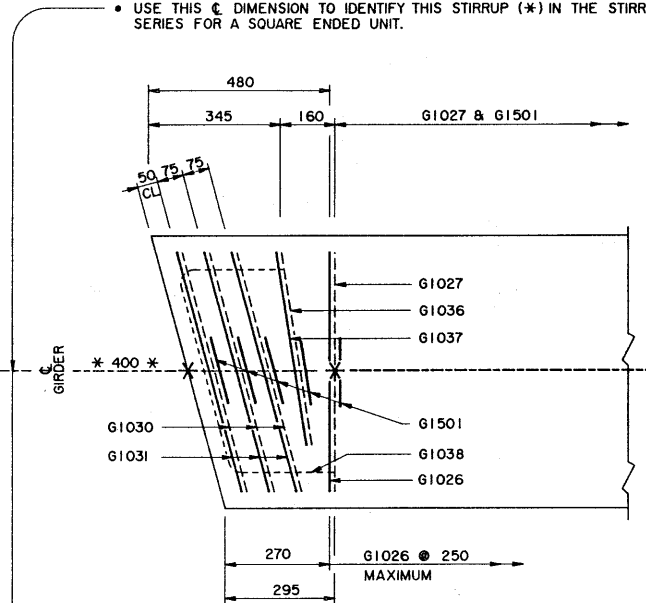
- SHIFT SLAB BARS TO CLEAR LIFTING HOOK POCKETS WHERE REQUIRED.
- SLAB BARS NOT DIMENSIONED ARE TIGHT AGAINST ADJACENT STIRRUP.
- USE THIS  $\epsilon$  DIMENSION TO IDENTIFY THIS STIRRUP (\*) IN THE STIRRUP SERIES FOR A SQUARE ENDED UNIT.



15° SKEW

30° SKEW

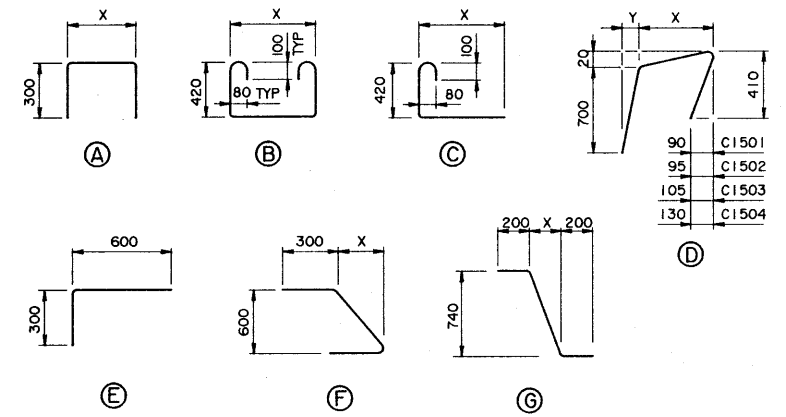
45° SKEW



**BAR LIST:** — SKEWED CURB GIRDER — EXTRA BARS FOR 2 ENDS

MARK	SIZE	TYPE	X	Y	LENGTH	15° SKEW		30° SKEW		45° SKEW	
						NO	MASS	NO	MASS	NO	MASS
C1501	15	D	380	80	1 455	4	9	2	5	2	5
C1502	15	D	390	85	1 465	2	5	2	5	2	5
C1503	15	D	440	95	1 515			2	5	2	5
C1504	15	D	535	115	1 625					2	5
G1030	10	B	750		1 850	6	9				
G1031	10	A	750		1 350	6	6				
G1032	10	B	840		1 940			6	9	2	3
G1033	10	A	840		1 440			6	7	2	2
G1034	10	B	1 025		2 125					6	10
G1035	10	A	1 025		1 625					6	8
G1036	10	C	600		1 150	2	2	4	4	6	5
G1037	10	E			900	2	1	4	3	6	4
G1038	10	F	160		1 220	2	2				
G1039	10	F	345		1 290			2	2		
G1040	10	F	600		1 450					2	2
G1501	15	G	85		1 140	8	14	2	3	4	7
G1502	15	G	100		1 145			8	14	2	3
G1503	15	G	120		1 150					8	14
TOTAL						kg	48		57		73

**BAR TYPES**  
(ALL DIMENSIONS ARE OUT TO OUT) NTS



**CURB GIRDER REINFORCING BARS**

- SKEWS ARE SHOWN RIGHT HAND FORWARD 1:10
- LEFT HAND FORWARD SKEWS ARE OPPOSITE AS SHOWN

**SUPERSEDED**

DESIGNED LEA				DRAWN VMV		DATE 93-08-19		CHECKED		DATE		STREAM		LOCATION		HIGHWAY		FILE		SHEET 4 of 4		DRAWING S-1584	
APPROVED EXECUTIVE DIRECTOR BRIDGE ENGINEERING DATE: PRELIM												Alberta TRANSPORTATION AND UTILITIES BRIDGE ENGINEERING BRANCH PRESTRESSED CONCRETE TYPE SC-510 SKEWED CURB GIRDER REINFORCING REPLACEMENT SPAN											

