

NOTE:

- SHIFT REINFORCING BARS TO CLEAR ANCHOR BOLT ASSEMBLY IF REQUIRED.
- SHIFT CURB BARS TO MISS LIFTING HOOK POCKETS WHERE REQUIRED.

NOTE:

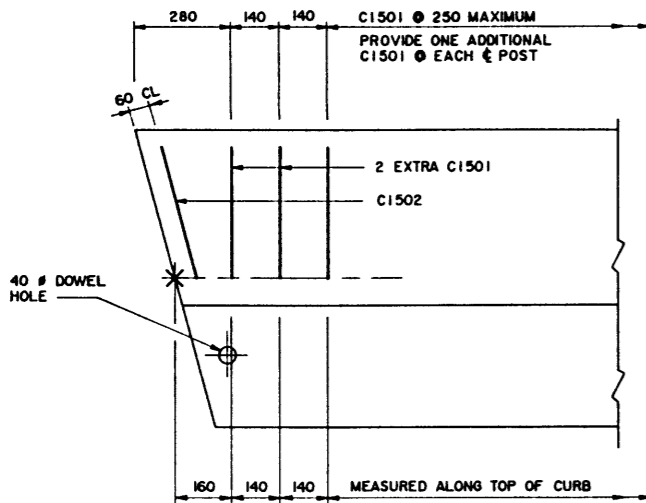
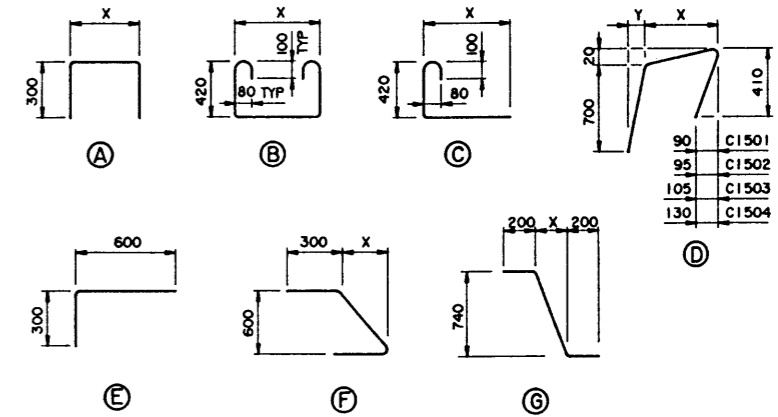
- SHIFT SLAB BARS TO CLEAR LIFTING HOOK POCKETS WHERE REQUIRED.
- SLAB BARS NOT DIMENSIONED ARE TIGHT AGAINST ADJACENT STIRRUP.
- USE THIS ϵ DIMENSION TO IDENTIFY THIS STIRRUP (#) IN THE STIRRUP SERIES FOR A SQUARE ENDED UNIT.

BAR LIST: — SKEWED CURB GIRDER — EXTRA BARS FOR 2 ENDS

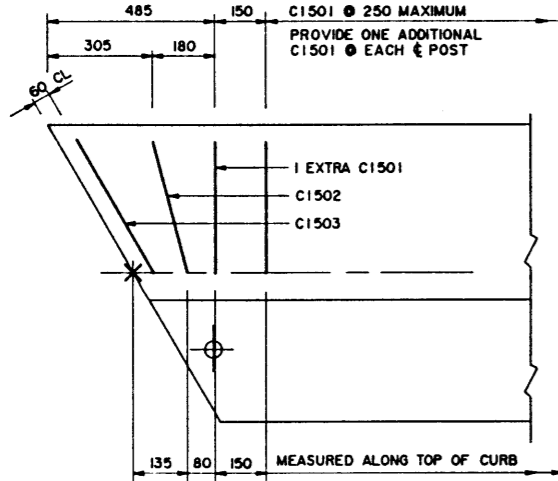
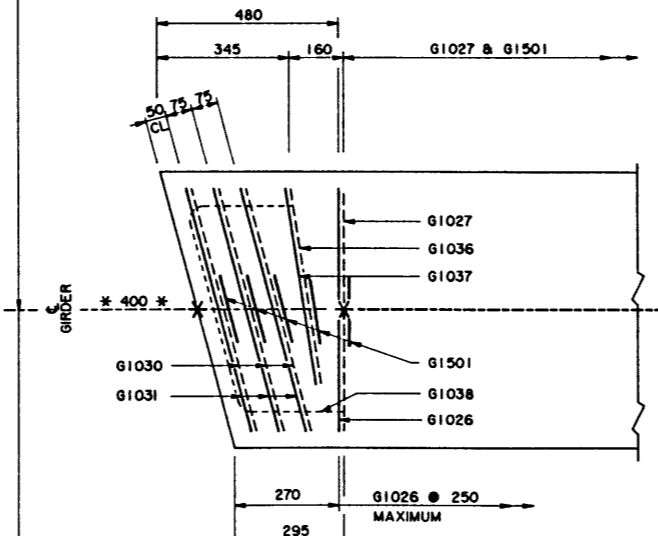
| MARK | SIZE | TYPE | X | Y | LENGTH | 15° SKEW | | 30° SKEW | | 45° SKEW | |
|-----------------|------|------|-------|-----|--------|-----------|-----------|-----------|-----------|-----------|-----------|
| | | | | | | NO | MASS | NO | MASS | NO | MASS |
| C1501 | 15 | D | 380 | 80 | 1 455 | 4 | 9 | 2 | 5 | | |
| C1502 | 15 | D | 390 | 85 | 1 465 | 2 | 5 | 2 | 5 | 2 | 5 |
| C1503 | 15 | D | 440 | 95 | 1 515 | | 2 | 5 | 2 | 5 | |
| C1504 | 15 | D | 535 | 115 | 1 625 | | | | | 2 | 5 |
| G1030 | 10 | B | 750 | | 1 850 | 6 | 9 | | | | |
| G1031 | 10 | A | 750 | | 1 350 | 6 | 6 | | | | |
| G1032 | 10 | B | 840 | | 1 940 | | | 6 | 9 | 2 | 3 |
| G1033 | 10 | A | 840 | | 1 440 | | | 6 | 7 | 2 | 2 |
| G1034 | 10 | B | 1 025 | | 2 125 | | | | | 6 | 10 |
| G1035 | 10 | A | 1 025 | | 1 625 | | | | | 6 | 8 |
| G1036 | 10 | C | 600 | | 1 150 | 2 | 2 | 4 | 4 | 6 | 5 |
| G1037 | 10 | E | | | 900 | 2 | 1 | 4 | 3 | 6 | 4 |
| G1038 | 10 | F | 160 | | 1 220 | 2 | 2 | | | | |
| G1039 | 10 | F | 345 | | 1 290 | | | 2 | 2 | | |
| G1040 | 10 | F | 600 | | 1 450 | | | | | 2 | 2 |
| G1501 | 15 | G | 85 | | 1 140 | 8 | 14 | 2 | 3 | 4 | 7 |
| G1502 | 15 | G | 100 | | 1 145 | | 8 | 14 | 2 | 3 | 3 |
| G1503 | 15 | G | 120 | | 1 150 | | | | | 8 | 14 |
| TOTAL kg | | | | | | 48 | 57 | 73 | 73 | 14 | 14 |

BAR TYPES

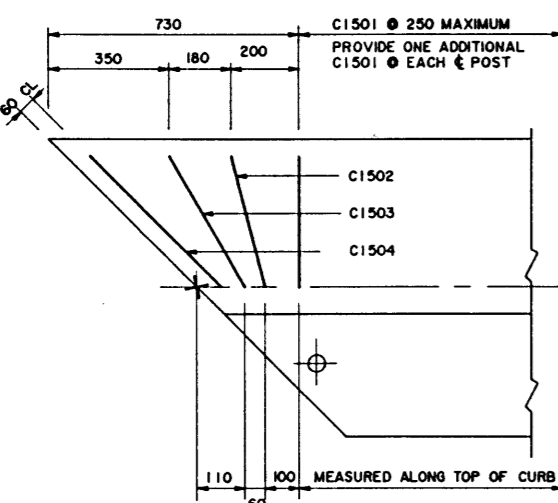
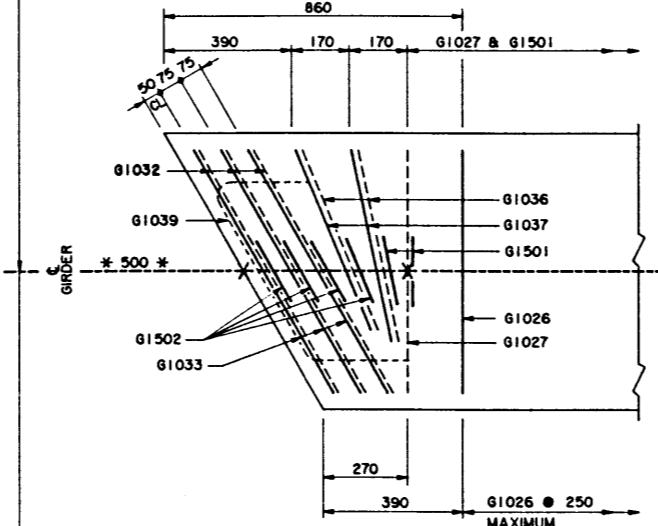
(ALL DIMENSIONS ARE OUT TO OUT) NTS



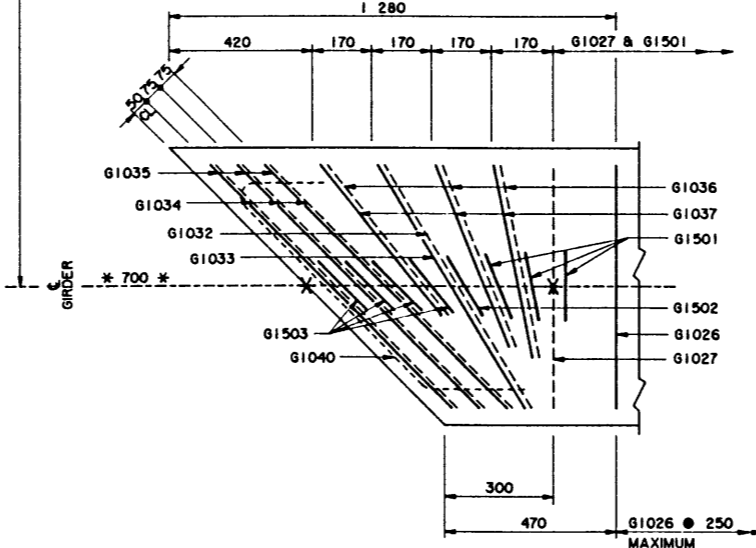
15° SKEW



30° SKEW



45° SKEW



CURB GIRDER REINFORCING BARS

- SKEWS ARE SHOWN RIGHT HAND FORWARD 1:10
- LEFT HAND FORWARD SKEWS ARE OPPOSITE AS SHOWN

| | | | | | | | | | | | | | |
|------------------------|------|--------------|--|------------------|--|-----------------------|------|------------------|----------|---|------|---|---------|
| DESIGNED <i>LEA</i> | | DRAWN VMV | | DATE 93-08-19 | | CHECKED <i>SDB</i> | | DATE 94-05-16 | | APPROVED <i>Albena</i> EXECUTIVE DIRECTOR BRIDGE ENGINEERING | | Albena TRANSPORTATION AND UTILITIES BRIDGE ENGINEERING BRANCH PRESTRESSED CONCRETE TYPE SC-510 SKEWED CURB GIRDER REINFORCING REPLACEMENT SPAN | |
| REV | DATE | REVISIONS | | | | BY | DATE | STREAM | LOCATION | HIGHWAY | FILE | SHEET | DRAWING |
| | | | | | | | | | | | | 4 of 4 | S-1584 |