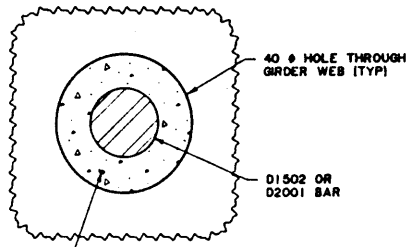
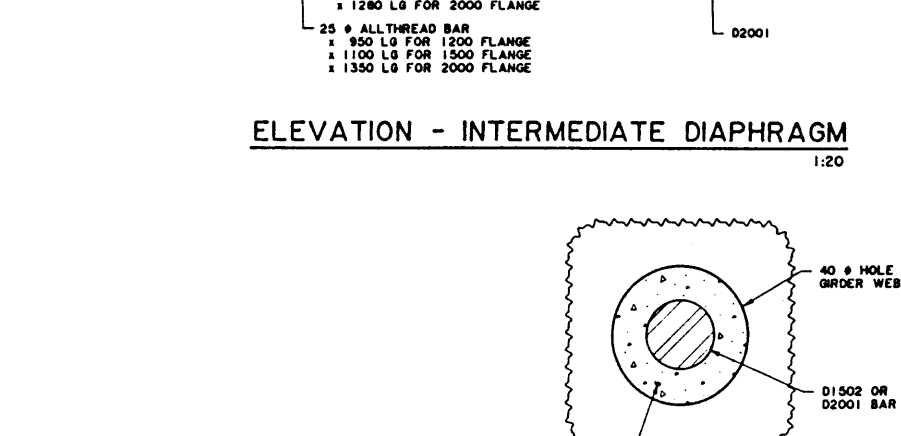
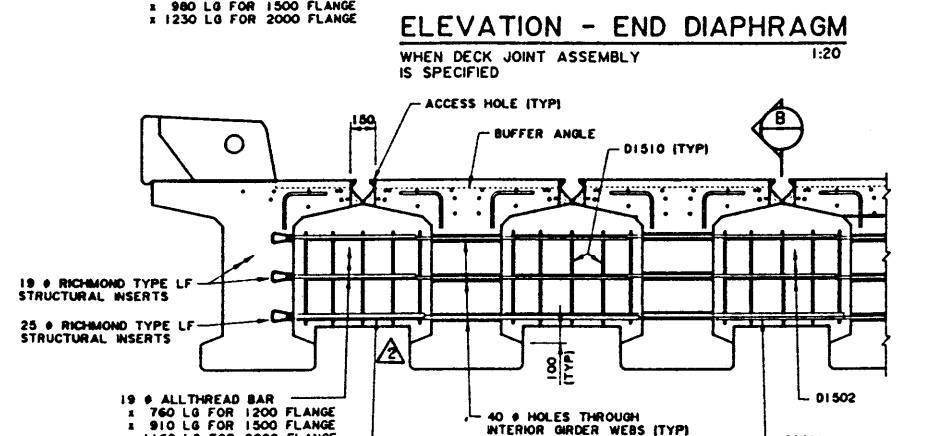
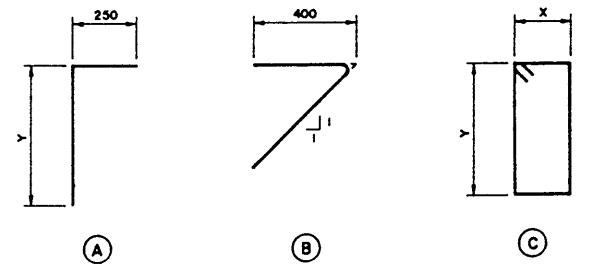
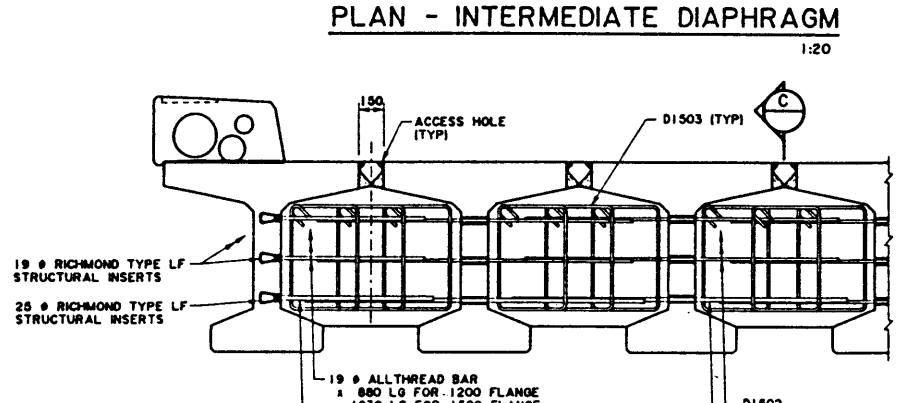
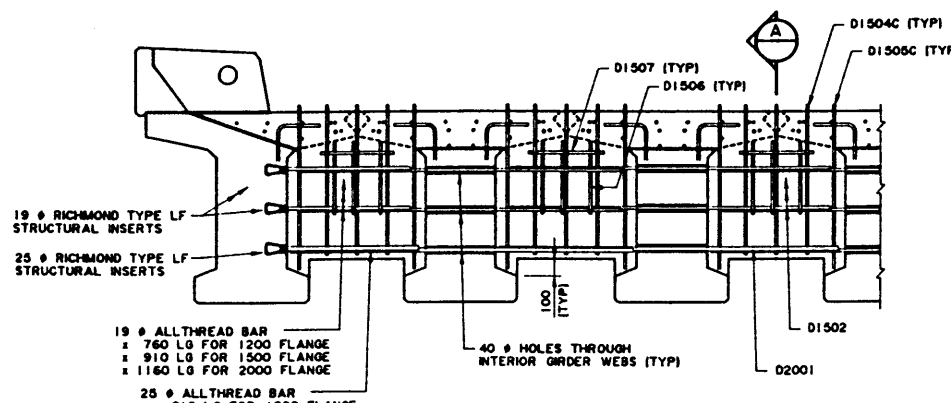
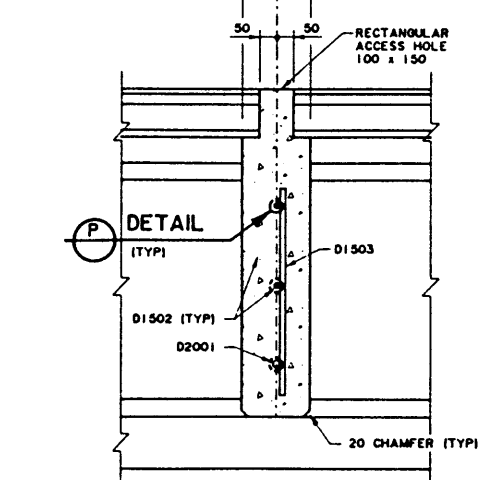
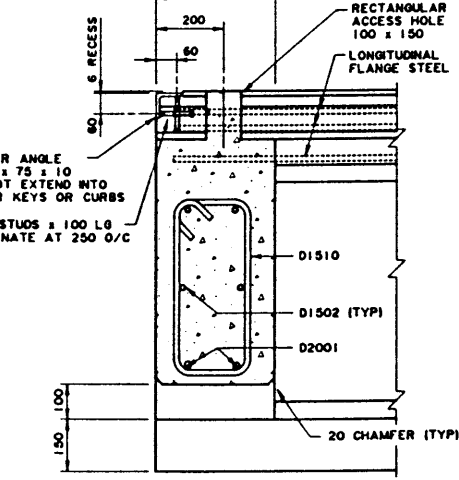
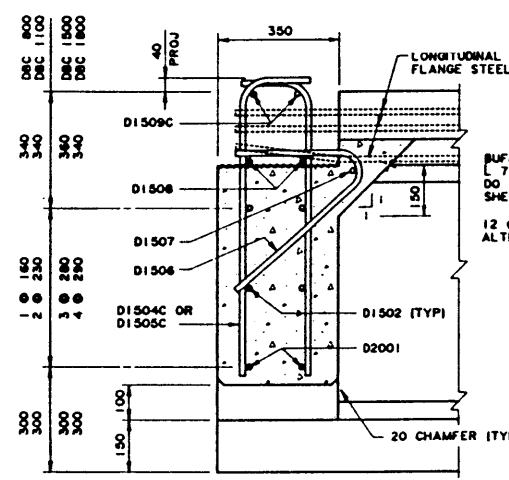
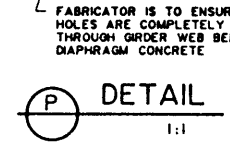
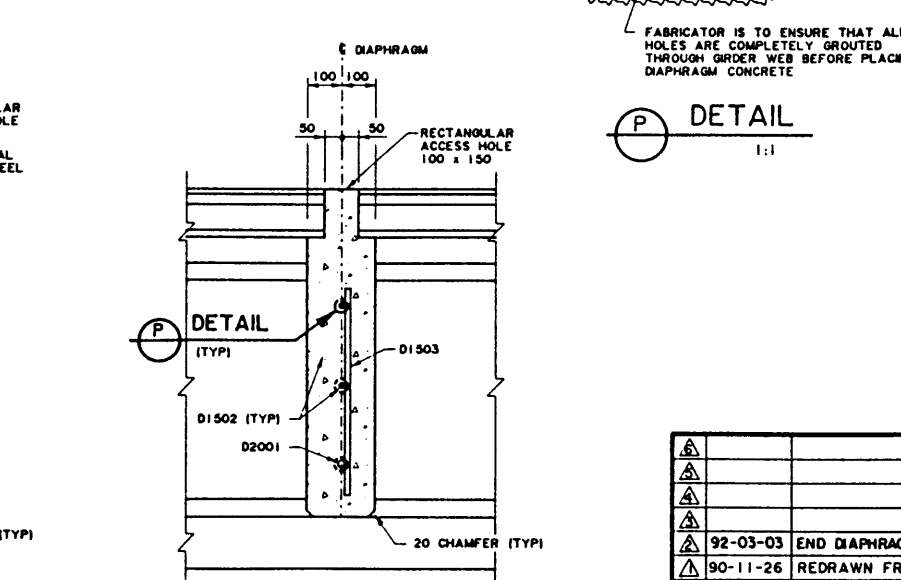
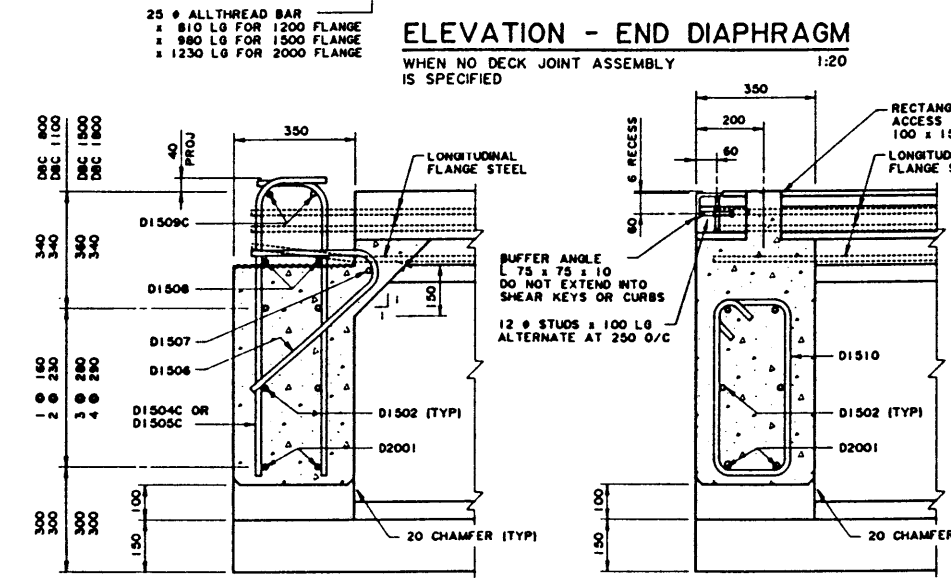


BAR LIST: DIAPHRAGMS (BY GIRDER ERECTOR)								
MARK	SIZE	TYPE	GIRDER DEPTH	FLANGE WIDTH	X	Y	LENGTH	
D1502	15	STR	ALL	1 200			1 840	
				1 500			2 140	
				2 000			2 640	
D1503	15	C	800	ALL	400	320	1 720	
					400	620	2 320	
					400	1020	3 120	
					400	1320	3 720	
D1504C	15	A	800	ALL		540	790	
						840	1 090	
						1 240	1 480	
						1 540	1 790	
D1505C	15	A	800	ALL		610	860	
						910	1 160	
						1 310	1 560	
						1 610	1 860	
D1508	15	B	ALL	ALL			965	
D1507	15	STR	ALL	1 200			700	
				1 500			1 000	
				2 000			1 500	
D1508	15	STR	ALL	ALL				
D1509C	15	STR	ALL	ALL				
D1510	15	C	800	ALL	225	210	1 150	
					225	510	1 750	
					225	890	2 510	
					225	1 210	3 150	
D2001	20	STR	ALL	1 200			1 980	
				1 500			2 280	
				2 000			2 780	



**GENERAL NOTES**

- DIAPHRAGM REINFORCING STEEL SHALL BE SUPPLIED AND PLACED BY GIRDER ERECTOR.
- DIAPHRAGM CONCRETE SHALL HAVE MINIMUM COMPRESSIVE STRENGTH OF 30 MPa AT 28 DAYS.
- BAR LENGTHS SHOWN ARE FOR SQUARE BRIDGES. LENGTHS SHALL BE INCREASED TO SUIT SPECIFIED SKEW.



DBC 1100 x 1200 SHOWN SHEET 2

APPROVED

*[Signature]*  
EXECUTIVE DIRECTOR  
BRIDGE ENGINEERING

92-03-03 END DIAPHRAGM BOTTOM LINE ADDED TL  
90-11-26 REDRAWN FROM DWG S-1557 TL

REV DATE DESCRIPTION BY DATE 91-03-07

REVISIONS

DESIGNED	DRAWN	DATE	CHECKED	DATE	STREAM	LOCATION	HIGHWAY	FILE	SHEET	DRAWING
TL	MIK	90-11-26							of	S-1590

STANDARD DBC SERIES  
DIAPHRAGM DETAILS