

(A) TYPICAL RAIL SECTION
1:10

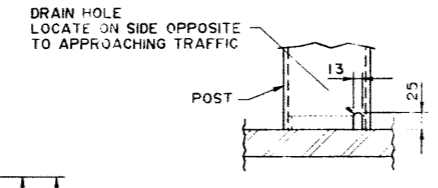
(D) SECTION
1:10

EXPANSION JOINT

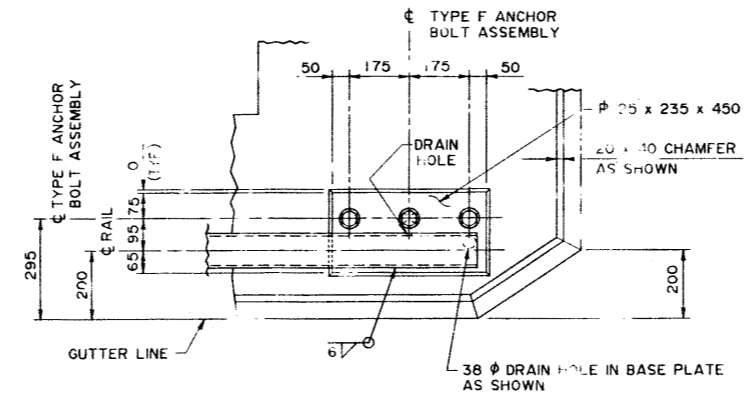
FIELD SPICE

RAIL ELEVATION
1:10

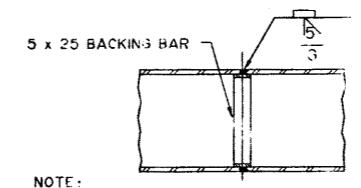
RAIL END ELEVATION
1:10



(F) DRAIN HOLE
1:5



(E) SECTION
1:10



RAIL SPLICE
1:5

NOTE:
RAIL SPLICES IF REQUIRED SHALL CONFORM TO THE ABOVE DETAIL AND BE CLEAR OF JOINTS AND CONNECTIONS.
NOT MORE THAN ONE SPLICE PER RAIL SECTION.

GENERAL NOTES

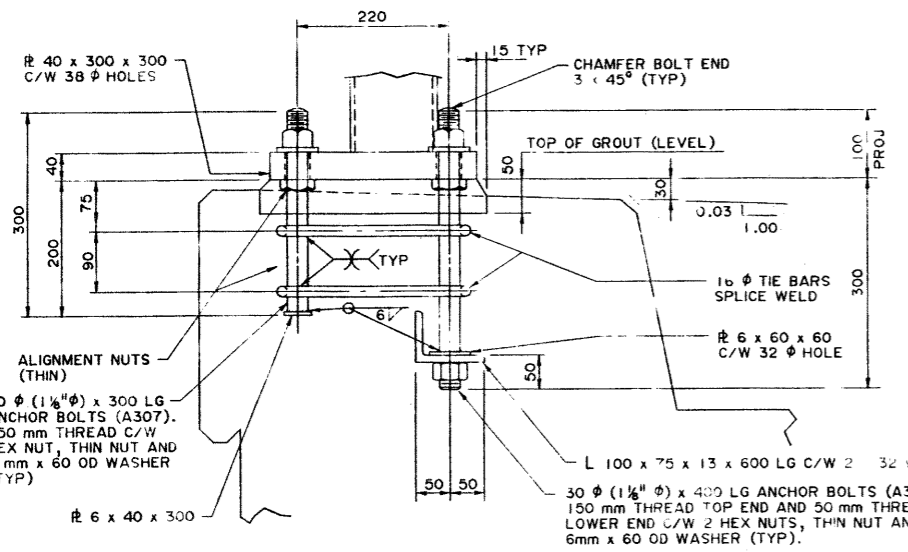
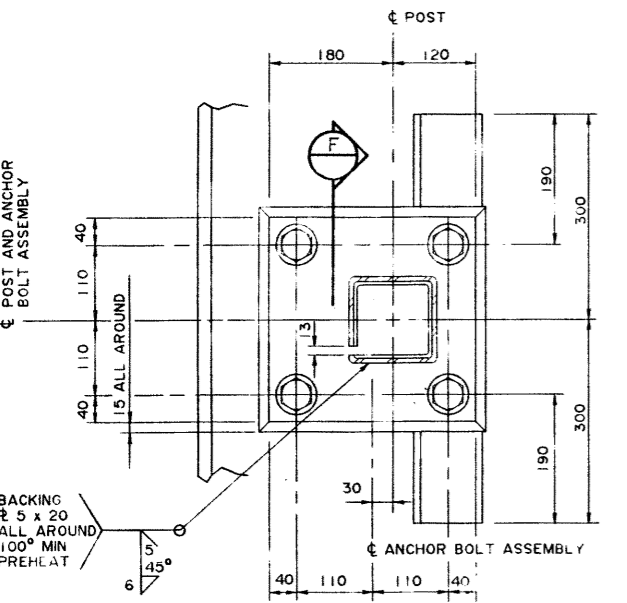
- CAN/CSA-S6-68 SPECIFICATION - RAIL WITH PARTICIPATING CURB.
- ALL DIMENSIONS ARE IN MILLIMETRES EXCEPT AS OTHERWISE NOTED.

FABRICATION

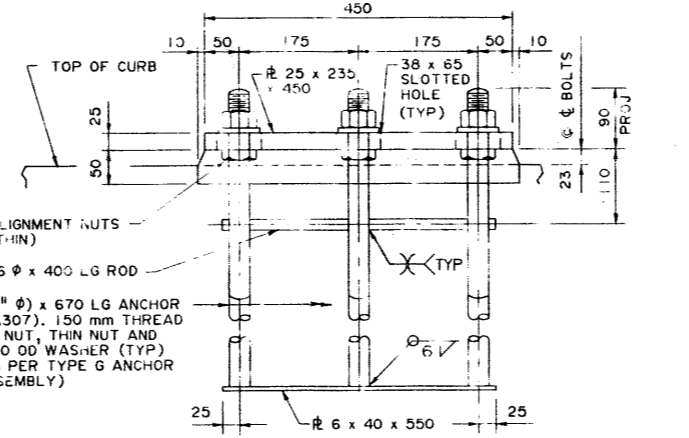
- ALL REQUIREMENTS OF THE CURRENT BRIDGE ENGINEERING BRANCH SPECIFICATION FOR THE SUPPLY OF BRIDGE RAIL (B-312M) SHALL BE MET.
- ALL STEEL SHALL CONFORM TO CSA G40.21M GRADE 50W EXCEPT STRUCTURAL TUBING SHALL CONFORM TO ASTM A500B. ANCHOR BOLTS SHALL CONFORM TO ASTM A307.
- ALL WELDING SHALL CONFORM TO CURRENT AWS SPECIFICATION D1.5.
- THE FOLLOWING MATERIALS SHALL BE HOT DIP GALVANIZED AFTER FABRICATION IN ACCORDANCE WITH THE REQUIREMENTS OF ASTM SPECIFICATIONS:
RAILING AND POSTS - A123
ANCHOR BOLT ASSEMBLIES AND ALL CONNECTING HARDWARE - A153
- RAILING TO BE FABRICATED WITH TUBE SEAM DOWN OR TO THE OUTSIDE OF THE BRIDGE.
- HSS RAIL LENGTHS:
MAXIMUM LENGTH MUST ALLOW SINGLE DIP GALVANIZING.
MINIMUM LENGTH TO GO OVER AT LEAST TWO POSTS.
- THE BOTTOM SURFACE OF BASE PLATES SHALL BE COATED BY AN APPROVED COATING SYSTEM, SUITABLE FOR APPLICATION ON GALVANIZED STEEL, TO PREVENT CONTACT BETWEEN THE ZINC AND THE GROUT. THE COLOUR SHALL BE MEDIUM GREY.

ERECTION

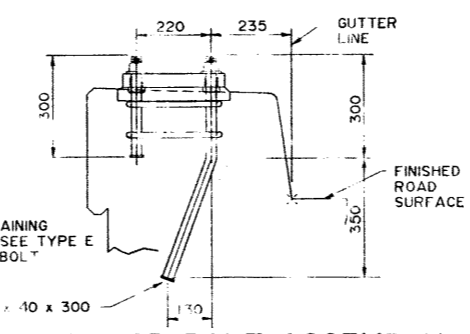
- ALL POSTS SHALL BE PERPENDICULAR TO GRADE.
- ALL DIMENSIONS ARE MEASURED PARALLEL TO TOP OF CURB AND ALONG CENTERLINE OF POST ANCHOR BOLT ASSEMBLIES
- LINE AND ELEVATION OF RAIL SHALL BE SET BY INSTRUMENT.



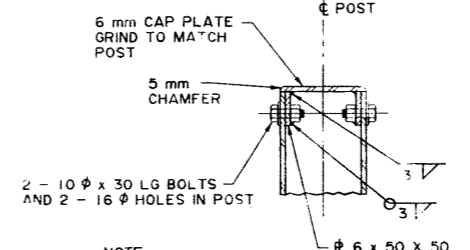
TYPE E ANCHOR BOLT ASSEMBLY
1:5



TYPE F ANCHOR BOLT ASSEMBLY
1:5

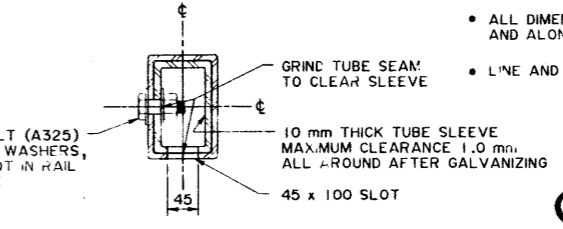


TYPE G ANCHOR BOLT ASSEMBLY
1:5



(B) SECTION
1:5

NOTE:
φ 10 x 50 x 50 DRILLED AND TAPPED FOR 10 φ BOLT IS AN ACCEPTABLE ALTERNATIVE TO THE WELDED NUT DETAIL.



(C) SECTION - TUBE SLEEVE
1:5

SUPERSEDED
SUPERSEDED
REVISION 95-03-02
①

DESIGNED		DRAWN		CHECKED		DATE		BY		DATE		EXECUTIVE DIRECTOR BRIDGE ENGINEERING		ALBERTA TRANSPORTATION AND UTILITIES BRIDGE ENGINEERING BRANCH	
LEA	WJW	95-0-10											PRELIM	500 mm SINGLE TUBE BRIDGERAIL	
												DRAWING		95-1618	