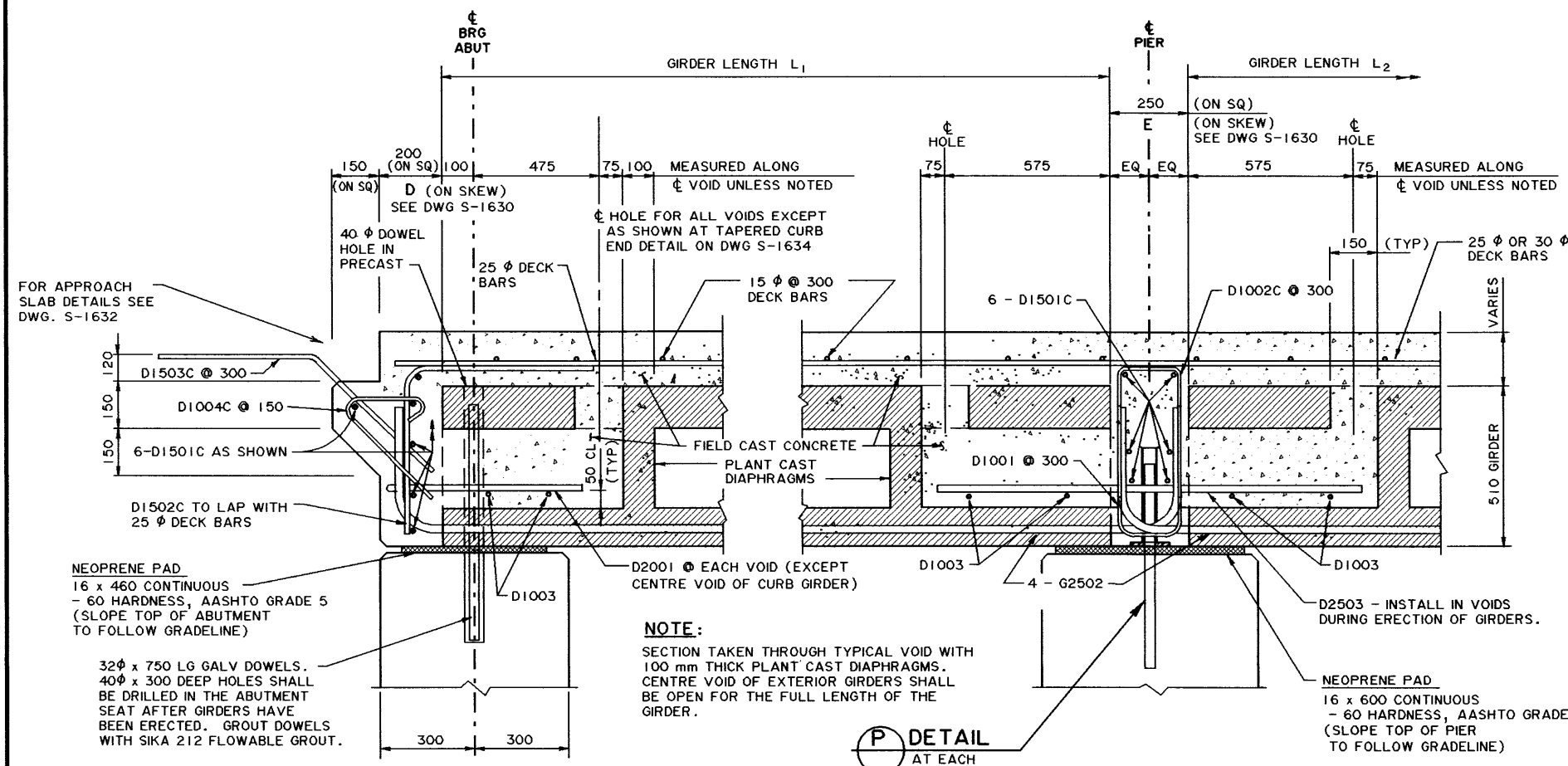


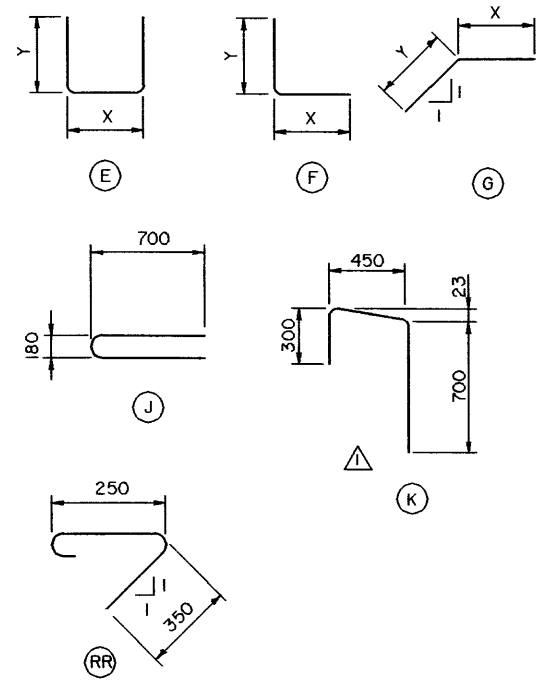
C:\WISCHNEIDER\DATA\TSB2530\USR3\STANDARDS\S1631.RV2 PLOTTED MAY 6, 2000



ABUTMENT DIAPHRAGM DETAIL
(TYPICAL) 1:10

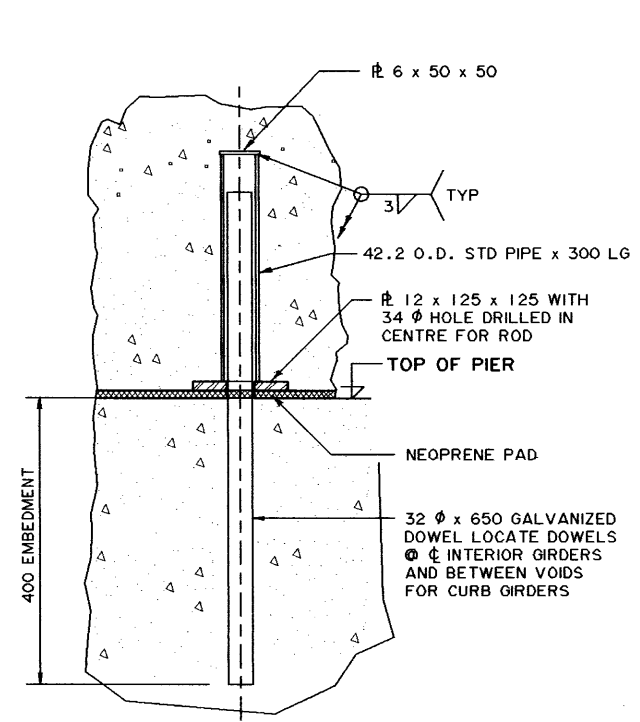
PIER DIAPHRAGM DETAIL
(TYPICAL) 1:10

BAR SHAPES

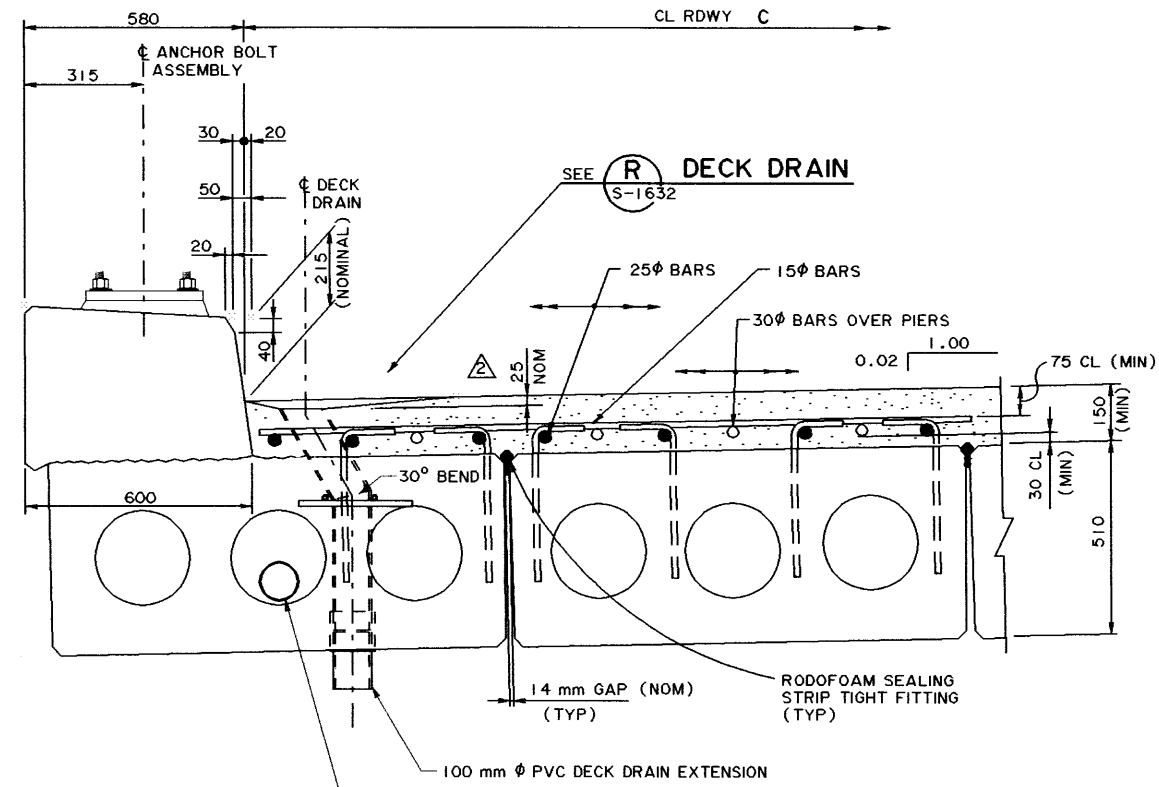


BAR LIST: DIAPHRAGMS					
MARK	SIZE	TYPE	X	Y	LENGTH
D1001	10	E	160	450	1 060
D1002C	10	E	160	450	1 060
D1003	10	STR			180
D1004C	10	RR			800
D1501C	15	STR			
D1502C	15	F	500	500	1 000
D1503C	15	G	500	500	1 000
D1504C	15	K			1 450
D2001	20	J			1 490
D2503	25	STR			1 350

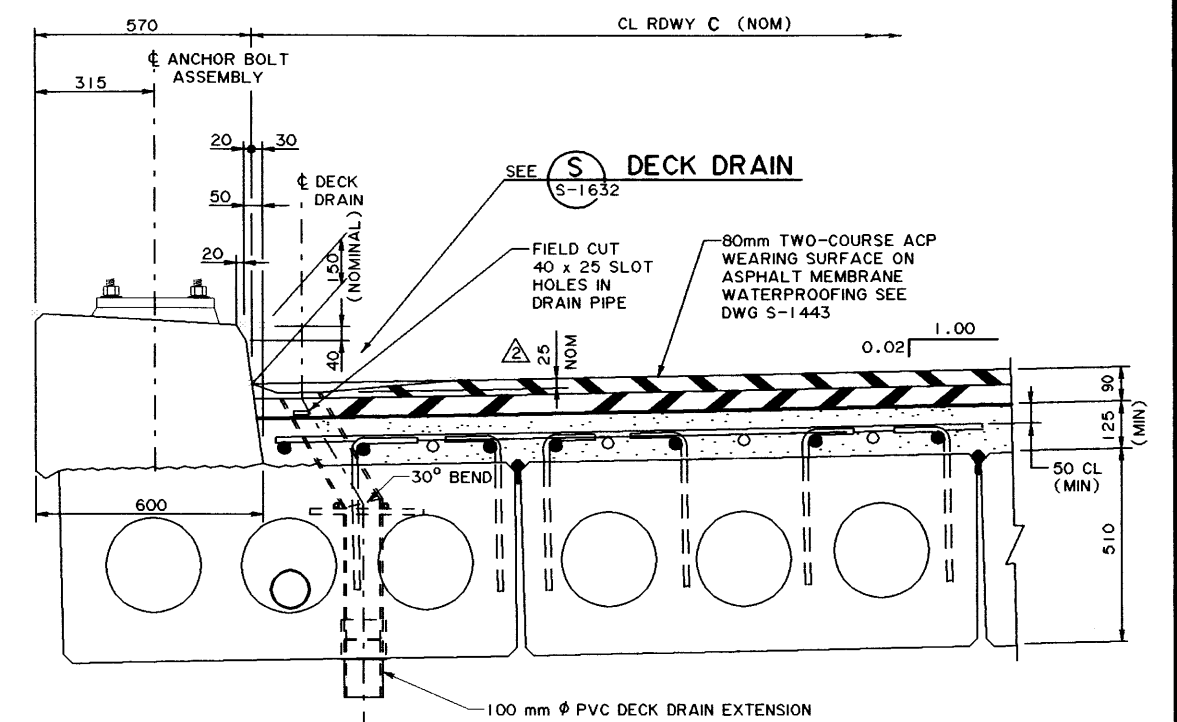
NOTE:
- POSTSCRIPT LETTER "C" ON MARK NUMBERS DENOTES EPOXY COATED BARS.



DETAIL
(GALVANIZE ASSEMBLY AFTER FABRICATION) 1:5



A TYPICAL DECK CROSS-SECTION
S-1630 FOR CONCRETE TO GRADE 1:10



B TYPICAL DECK CROSS-SECTION
S-1630 FOR ACP WEARING SURFACE (FOR DETAILS NOT SHOWN SEE A) 1:10

FOR GENERAL NOTES, SEE DWG S-1630

DESIGNED		DRAWN		DATE		CHECKED		DATE		BY		REVISIONS		APPROVED						
RY	WJW	98-08-21	CTC																	
<p>ORIGINAL DRAWING APPROVED BY ALLAN KWAN EXECUTIVE DIRECTOR TECHNICAL STANDARDS BRANCH NOVEMBER 19, 1998</p>												<p>Alberta INFRASTRUCTURE TECHNICAL STANDARDS BRANCH</p>								
<p>STANDARD SCC COMPOSITE BRIDGES DECK DETAILS - SHEET 1</p>												<p>STREAM</p>				LOCATION	HIGHWAY	FILE	SHEET 2 OF 7	DRAWING S-1631