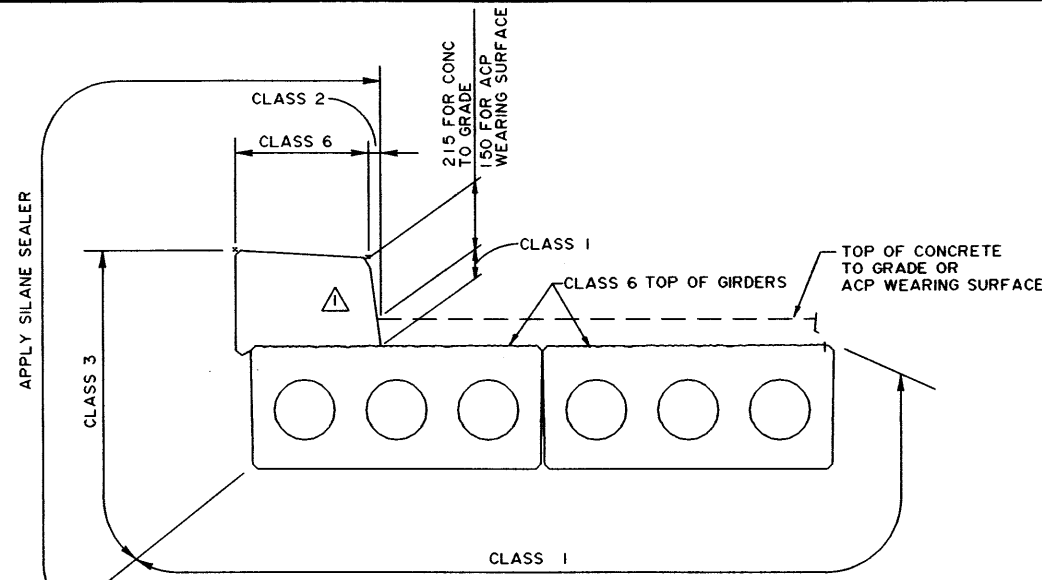


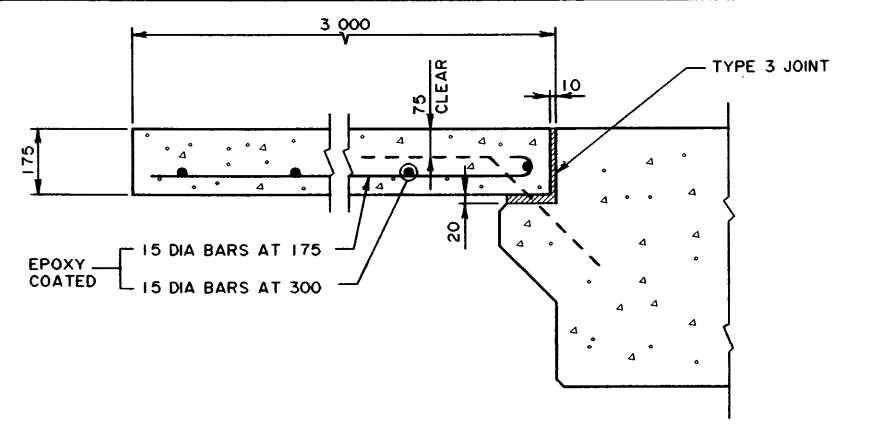
CURB BLOCKOUT AT PIERS

NTS



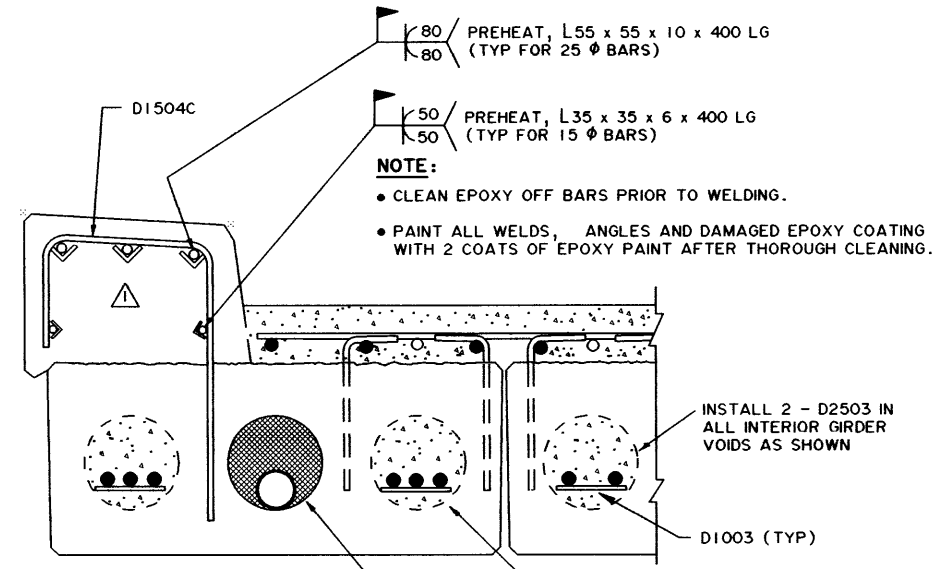
PRECAST GIRDER FINISHES

NTS

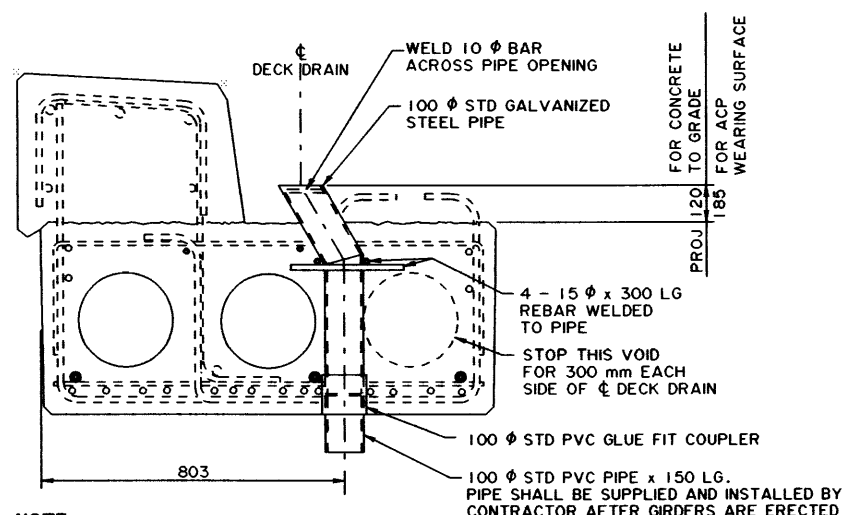


BRIDGE END DETAIL - CONCRETE TO GRADE

1:10

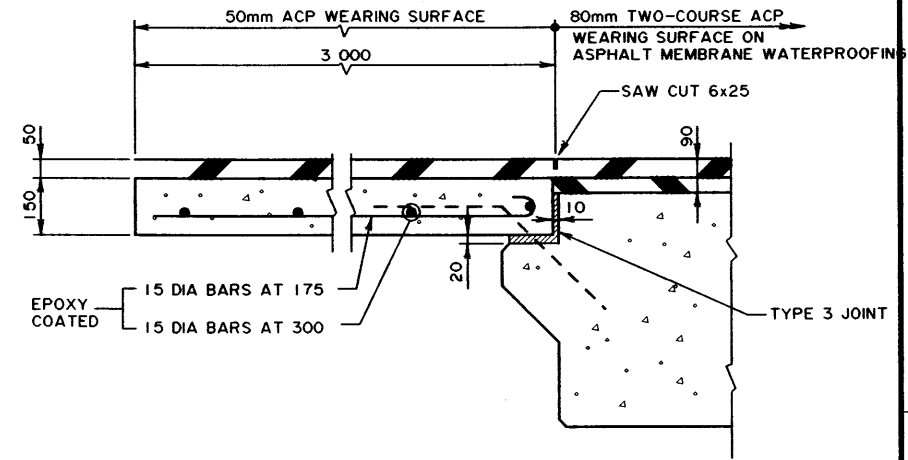


SECTION C
S-1630, S-1632 1:10



DECK DRAIN - SECTION

1:10



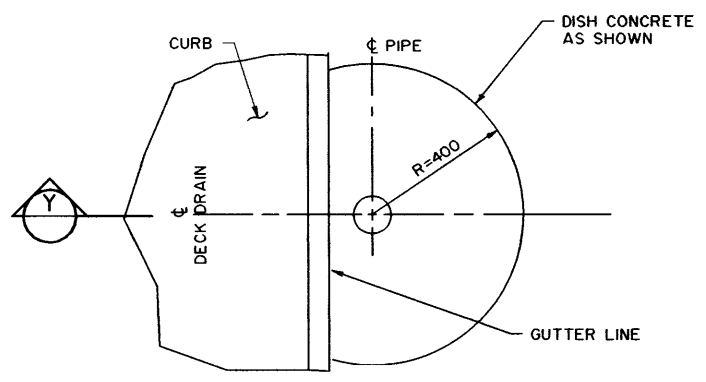
BRIDGE END DETAIL - ACP WEARING SURFACE

1:10

250 Ø CENTRE VOID ON EXTERIOR GIRDERS SHALL BE CONTINUOUS THROUGH ENTIRE LENGTH OF PRECAST GIRDERS. BLOCK OFF VOID IN PRECAST GIRDER PRIOR TO POURING DIAPHRAGMS.
INSTALL 100 Ø PVC RIGID DUCT C/W PULL WIRE AND EXPANSION SLEEVE AT MID LENGTH. PROVIDE 150 Ø x 600 LG PIPE SLEEVE THROUGH PIER DIAPHRAGMS.

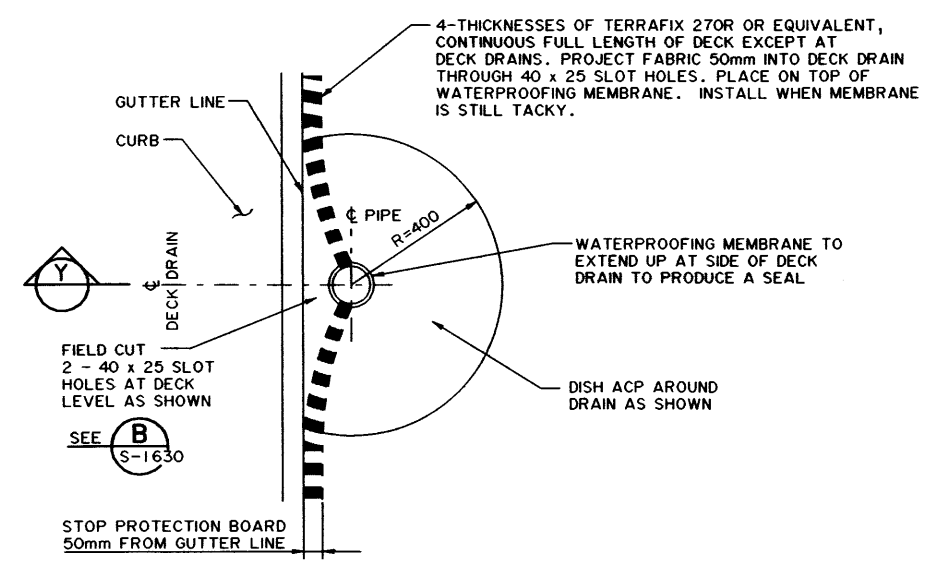
5 x 75 WOOD FINISHING STRIP TO BE REMOVED AFTER DECK POUR (SHOP ATTACH TO BUFFER ANGLE WITH COUNTERSUNK SCREWS IN TAPPED HOLES)

L75 x 75 x 10 CONTINUOUS C/W 19 Ø x 125 LG NELSON STUDS 300 (GALV AFTER FABRICATION) (SUPPLY IN TWO LENGTHS AND FIELD WELD ANGLES @ 45°. PAINT DAMAGED AREAS OF GALVANIZING WITH TWO COATS OF GALVACON)



DECK DRAIN - PLAN

S-1631 (FOR CONCRETE TO GRADE) 1:10



DECK DRAIN - PLAN

S-1631 (FOR ACP WEARING SURFACE) 1:10

BRIDGE END DETAIL - NO APPROACH SLAB

1:10

• FOR GENERAL NOTES, SEE DWG. S-1630

DESIGNED		DRAWN		DATE		CHECKED		DATE		STREAM		LOCATION		HIGHWAY		FILE		SHEET		DRAWING	
RY		WJW		98-04-17		CTC												3 OF 7		S-1632	
APPROVED ORIGINAL DRAWING APPROVED BY ALLAN KWAN EXECUTIVE DIRECTOR TECHNICAL STANDARDS BRANCH NOVEMBER 19, 1998										Alberta INFRASTRUCTURE TECHNICAL STANDARDS BRANCH STANDARD SCC COMPOSITE BRIDGES DECK DETAILS - SHEET 2											
REV		DATE		REVISIONS																	
00-04-25		PL-2 BRIDGERAIL & CURB																			

C:\W\SCHNEIDER\DATA\TSB2530\USP3\STANDARDS\51631.RVT PLOTTED MAY 8, 2000