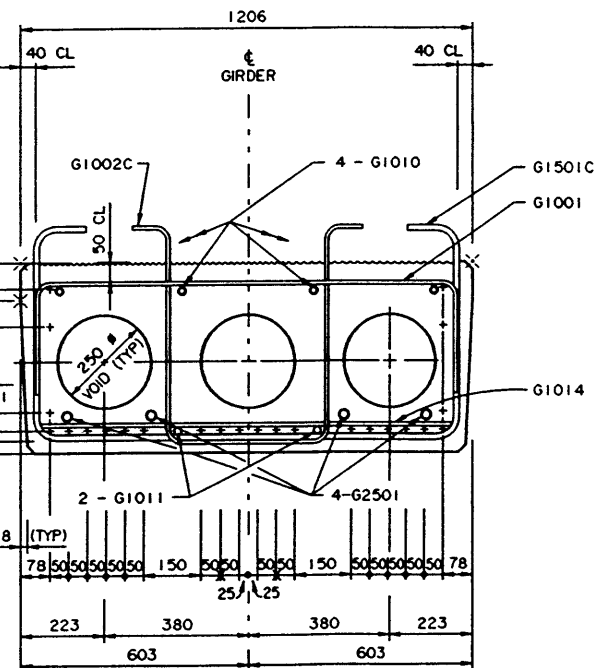


ALL POSSIBLE STRAND LOCATIONS HAVE BEEN MARKED. SEE TABLE FOR THE NUMBER AND LOCATION OF STRANDS REQ'D FOR EACH GIRDER LENGTH



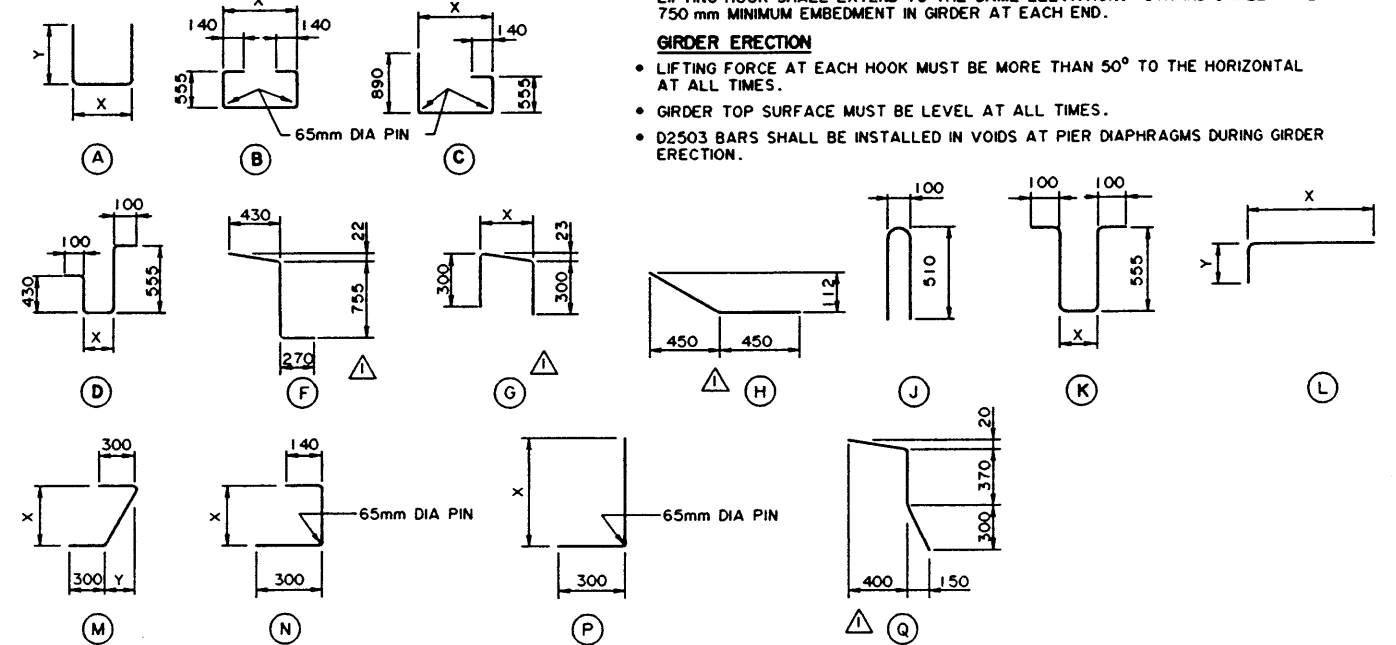
BAR LIST: INTERIOR GIRDER

MARK	SIZE	TYPE	X	Y	LENGTH
G1001	10	A	1 125	300	1 725
G1002C	10	K	380		1 690
G1003	10	J			1 080
G1008	10	A	1 000	300	1 600
G1009	10	STR			950
G1010	10	STR			FULL LENGTH OF GIRDER
G1011	10	STR			FULL LENGTH OF GIRDER
G1014	10	STR			1 100
G1501C	15	B	1 125		2 515
G2501	25	STR			FULL LENGTH OF GIRDER
G2502	25	L	1 500	400	1 900

NOTE: POSTSCRIPT LETTER "C" ON MARK NUMBERS DENOTES EPOXY COATED BARS.

(E) DENOTES BARS FOR ABUTMENT END ONLY

BAR TYPES (FOR ALL GIRDERS)
(ALL BAR DIMENSIONS ARE OUT TO OUT)



GIRDER LENGTH	THEORETICAL GIRDER WEIGHT (tonnes) INTERIOR/CURB	FORCE PER STRAND (kN) INITIAL/FINAL	LIFT HOOK A (mm)	STRAND PATTERN (N = TOTAL NO. OF STRANDS)	DEBONDED STRANDS (ND = NO. OF DEBONDED STRANDS) (D = DEBONDED LENGTH FROM GIRDER END, mm)	STIRRUP SPACING S (mm)	G1014 SPACING Q (mm)
8m	7.6/12.6	129/113	1000	N=12 + + + + + + + + + + + + + + + +	ND=0	50, 2Ø75=150, 3Ø100=300, 6Ø150=900, 4Ø250=1000, 3Ø300=900, 2Ø350=700	500 2Ø1750
10m	9.5/15.8	129/110	1200	N=16 + + + + + + + + + + + + + + + +	ND=0	50, 2Ø75=150, 3Ø100=300, 6Ø150=900, 3Ø250=750, 4Ø300=1200, 5Ø350=1050	500 2Ø2250
12m	11.4/19.0	129/108	1500	N=20 + + + + + + + + + + + + + + + +	ND=4, D=1100 + + + + + + + + + + + + + + + +	50, 2Ø75=150, 3Ø100=300, 9Ø150=1350, 6Ø200=1200, 4Ø300=1200, 5Ø350=1750	500 2Ø2200 1100
14m	13.3/22.1	129/106	1500	N=24 + + + + + + + + + + + + + + + +	ND=6, D=1400 + + + + + + + + + + + + + + + +	50, 2Ø75=150, 3Ø100=300, 11Ø150=1650, 6Ø200=1200, 3Ø250=750, 5Ø300=1500, 4Ø350=1400	500 2Ø2200 2100

FOR ADDITIONAL GENERAL NOTES, SEE DWG. S-1630

DESIGNED		DRAWN		DATE		CHECKED		DATE		STREAM		LOCATION		HIGHWAY		FILE		SHEET		DRAWING	
RY		WJW		98-08-21		CTC												4 of 7		S-1633	

APPROVED

ORIGINAL DRAWING APPROVED BY

ALLAN KWAN

EXECUTIVE DIRECTOR TECHNICAL STANDARDS BRANCH

NOVEMBER 19, 1998

Alberta INFRASTRUCTURE
TECHNICAL STANDARDS BRANCH

STANDARD SCC COMPOSITE BRIDGES
INTERIOR GIRDER

C:\MSCHNER\DATA\TSB2330\USR3\STANDARDS\S1633.RV1 PLOTTED MAY 8, 2000